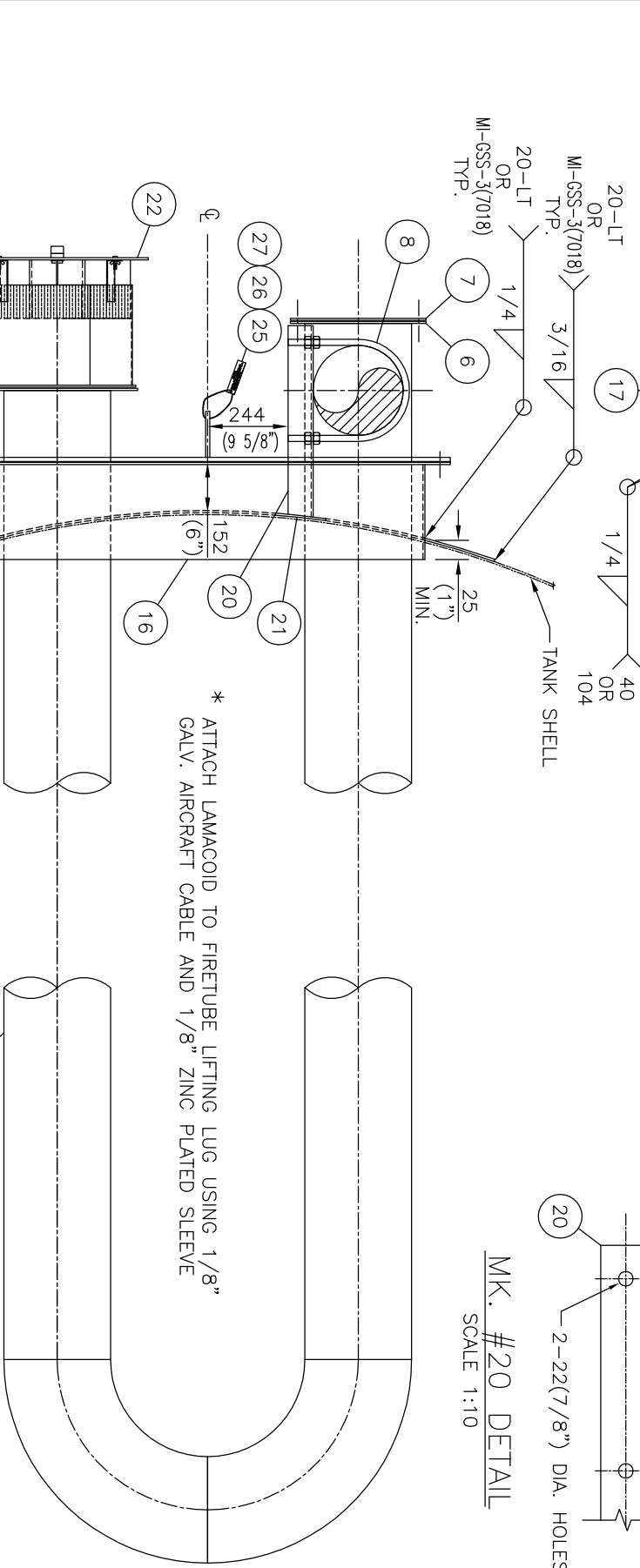
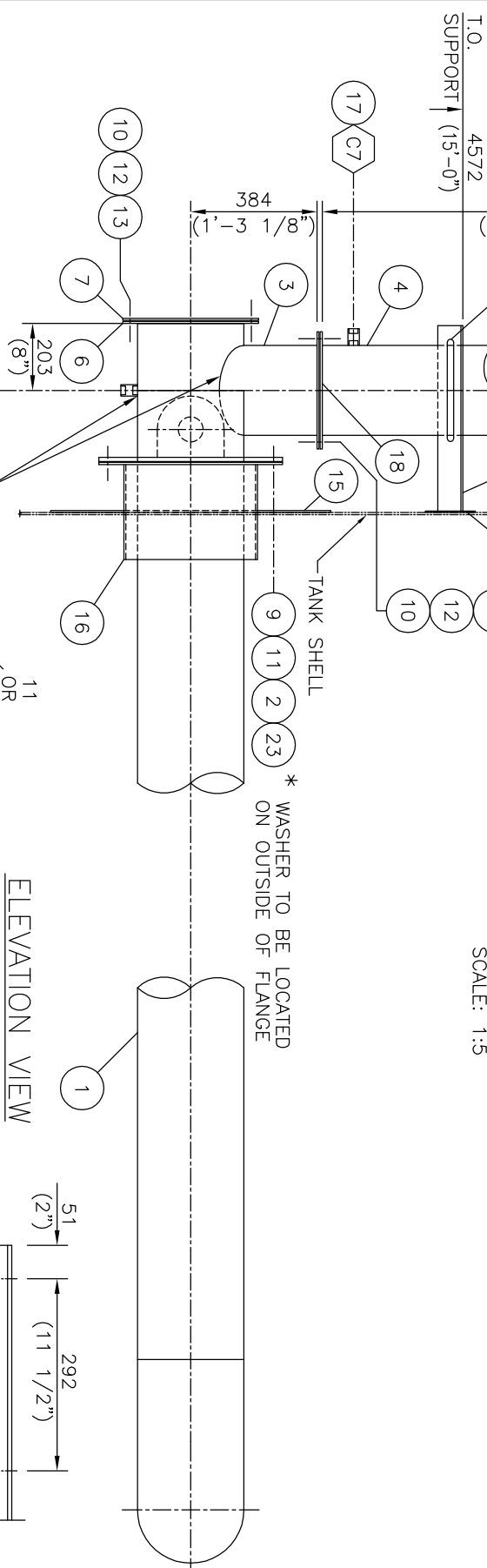
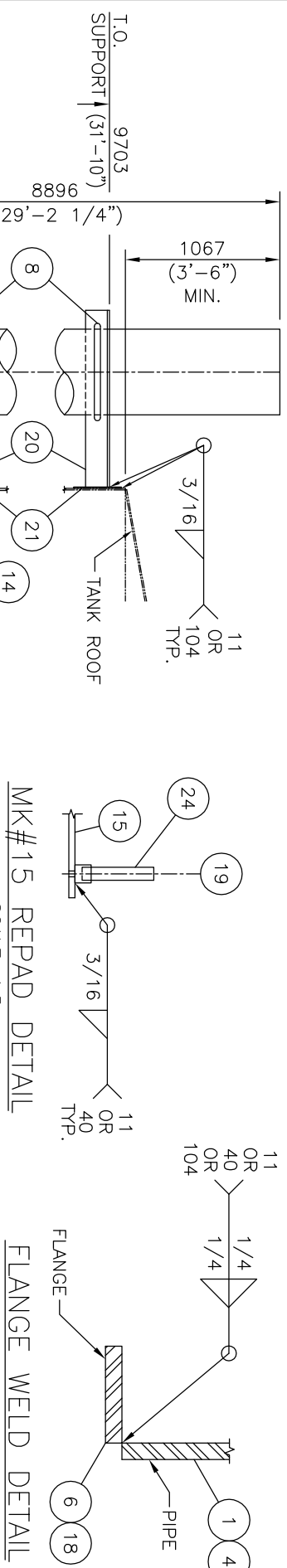


MATERIAL REQUIREMENTS

M (MTR'S):	PART NO.	DESCRIPTION	CUT LENGTH	MAT'L	WT	MAT REQ
		NONE				
1	2894	FIRETUBE BASIC ASSEMBLY 12" C/W COVER PLATE	-	-	1820	-
2	1229	GASKET 12" FIRETUBE	-	SF2401	1	-
3	1306	STACK PUP 10"	-	-	46	-
4	-	PIPE 10" LIGHT WALL ERW	26'-2 1/4"	SA-53-B	341	-
5	11348	FLANGE 12" BURNER KENILWORTH	-	-	6	-
6	1669	STACK FLANGE 12"	-	-	6	-
7	1665	STACK BLIND 12"	-	-	16	-
8	-	U-BOLT 3/4" x 10" NPS C/W 4 NUTS	-	C.S.	8	-
9	15707	BOLT 5/8" DIA. x 2" LG. NF	-	GR. 8	14	-
10	1855	BOLT 1/2" DIA. x 1 1/2" LG.	-	GR. 5	4	-
11	15708	HEX NUT 5/8" NOM.	-	GR. 8	4	-
12	1885	HEX NUT 1/2" NOM.	-	GR. 5	1	-
13	1444	GASKET 12" STACK	-	SF2401	1	-
14	1348	GASKET 10" STACK	-	SF2401	1	-
15	1351	FIRETUBE REPAD 12" (1/4" THK.)	-	G40.21-44W	75	-
16	1538	FIRETUBE THROAT 12"	-	G40.21-38W	148	-
17	1278	FULL CPLG. 3/4" 3000# F.S. SCR'D	-	SA-105	2	-
18	1688	STACK FLANGE 10"	-	-	6	-
19	1926	HALF CPLG. 1/4" 3000# F.S. SCR'D	-	SA-105	1	-
20	2101	ANGLE 3" x 3" x 1/4"	2'-0"	G40.21-44W	20	-
21	5948	REPAD 6" DIA. x 1/4" THK.	-	G40.21-44W	3	-
22	-	KENILWORTH FLAME ARRESTOR (1.0 MM BTU/h) BY OTHERS	-	-	-	-
23	15709	WASHER FLAT 5/8"	-	GR.8	4	-
24	1234	NIPPLE 1/4" SCH XS x 3" LG. SMSL TBE	-	SA-106-B	1	-
25	15730	TAG LAMACOID 1" x 4" LG.	-	-	1	-
26	1758	CABLE 1/8" AIRCRAFT 7 x 19 (6" LG.)	-	GALV.	1	-
27	15766	SLEEVE OVAL 1/8"	-	ALUMINUM	1	-
				SUBTOTAL	2524	
				X 1.06		
				TOTAL (lbs.)	2675	



- NOTES:
1. ALL DIMENSIONS ARE IN S.I. AND IMPERIAL UNITS. DIMENSIONS IN BRACKETS ARE IMPERIAL HARD CONVERSIONS FOR SHOP REFERENCE ONLY.
 2. DRILL 1/4" TELLTALE HOLE IN SHELL REINFORCING PAD AND WELD ON HALF COUPLING (MK#19) AND ADD NIPPLE (MK#21) TO EXTEND BEYOND INSULATION.
 3. REFER TO EDS-3135 FOR BOLTING TORQUE/SEQUENCE.
 4. AIR TEST FIRETUBE TO 7 psig.



CLIENT PennWest ENERGY
GL CODE: 335.1600

DWG TITLE 1000 BBL PRODUCTION TANK
TANK FIRETUBE (12") ERW ASSEMBLY

NO. RECD	8	NO. REV	06-061640
SCALE	1:20	DWG NO.	W06-061640-B104
DATE (d/m/y)	18/03/17	SHT NO.	1 OF 1
		REV	1