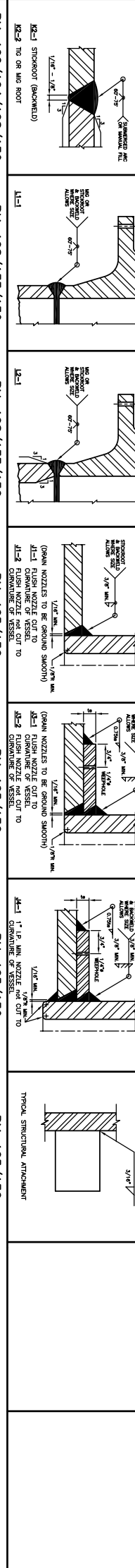
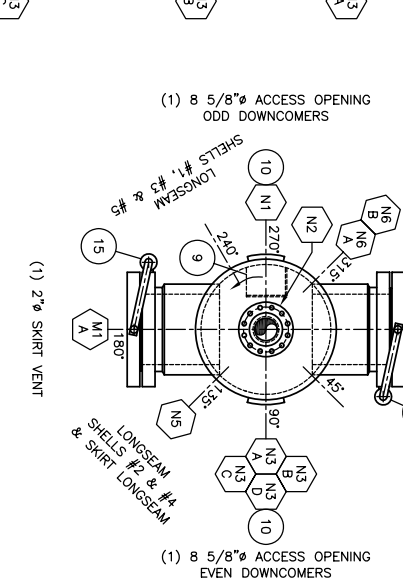
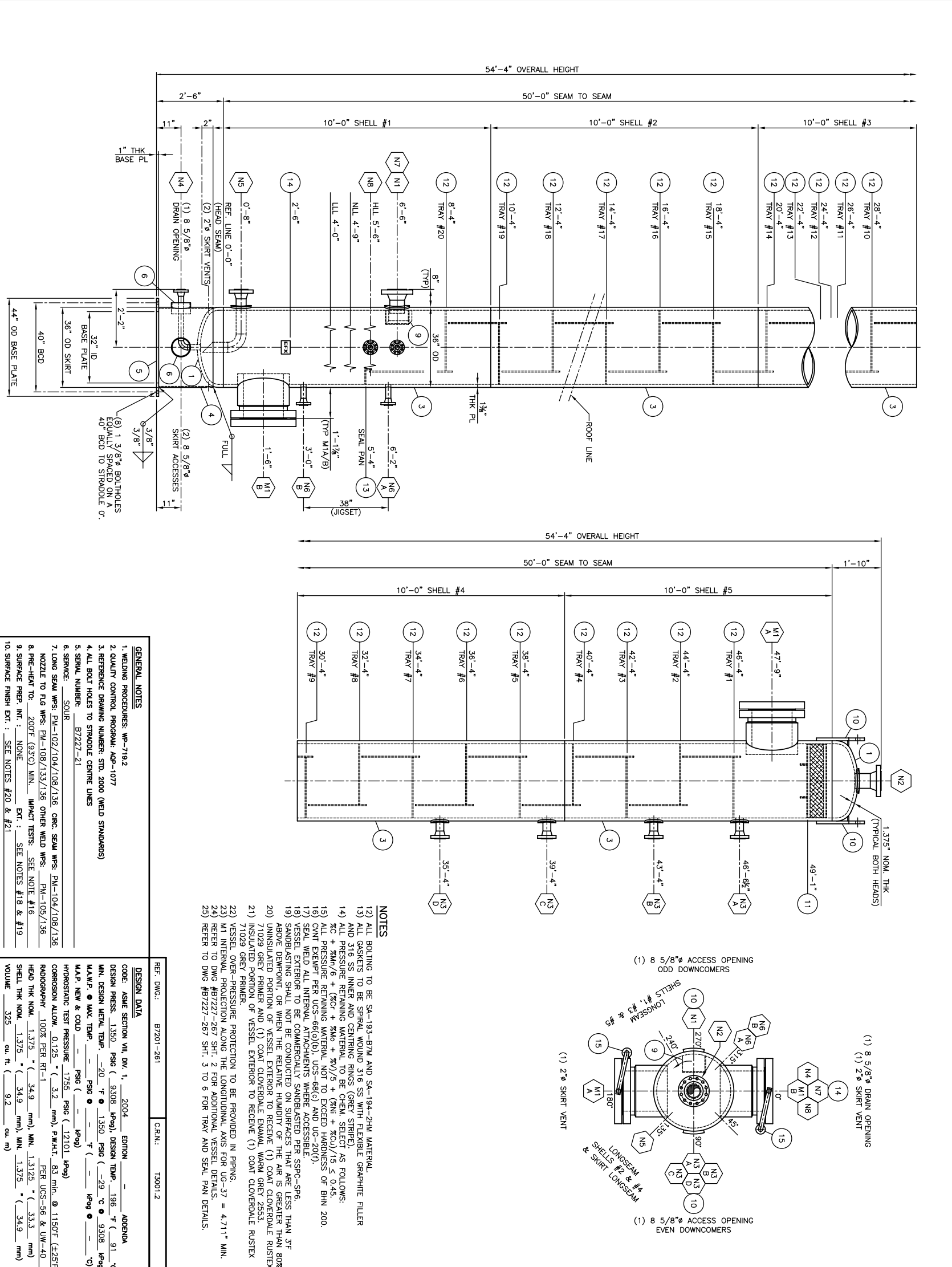


THIS DRAWING IS THE EXCLUSIVE PROPERTY OF PRESSON ENERFLEX AND MAY NOT BE COPIED OR COMMUNICATED TO A THIRD PARTY WITHOUT THE WRITTEN AUTHORIZATION OF PRESSON ENERFLEX.



MARK	PART	DESCRIPTION	QTY	MATERIAL	WELD SML
1	HEADS	36" OD x 1 3/8" NOM. THK 2:1 SE HEAD w/ 2" SF (HOT FORMED)	2	SA-51670N	K2-2
3	SHELLS	36" OD x 1 3/8" PL x 10'-0" LG	5	SA-51670N	K2-1/K2-2
4	SKIRT	36" OD x 1/2" PL x 2'-1" LG	1	SA-51670N	K2-1/K2-2
5	BASE PLATE	44" OD x 1" PL x 32" ID	1	SA-51670N	L2-1
6	SKIRT REINFR.	8" SCH STD SMLS PIPE x 5" LG	3	SA-106B	
7					
8					
9	INLET DEFLECTOR	10" x 10" x 7" x 3/8" PL (FAB BOX, TILT 15° DOWN)	1	SA-51670	
10	LIFT LUOS	REFER TO DWG #B7227-261 SHIT. 2	2		
11	MIST PAD	REFER TO DWG #B7227-261 SHIT. 3 TO 6	6		
12	TRAYS	REFER TO DWG #B7227-261 SHIT. 4	4		
13	SEAL PANS	REFER TO DWG #B7227-261 SHIT. 4	4		
14	NAME PLATE	STANDARD NAME PLATE c/w "T" BRACKET	1	SA-106B	
15	DAWIT	STANDARD DAWIT FOR 18" 600# BLIND FLANGE	2	SA-106B	



GENERAL NOTES

1. WELDING PROCEDURES: WP-719.2
2. QUALITY CONTROL PROGRAM: ADP-1077
3. REFERENCE DRAWING NUMBER: STD. 2000 (WELD STANDARDS)
4. ALL BOLT HOLES TO SIMULATED CENTRE LINES
5. SERIAL NUMBER: B7227-21
6. SERVICE: SOUR
7. LONG SEAM WPS: PM-102/104/108/136 CHR. SEAM WPS: PM-104/108/136
8. PRE-HEAT TO: 200°F (93°C) MIN. IMPACT TESTS: SEE NOTE #16
9. SURFACE PREP: INT.: NONE EXT.: SEE NOTES #18 & #19
10. SURFACE FINISH EXT.: SEE NOTES #20 & #21
11. INSULATION: 2" AF-530 c/w SMOOTH ALUMINUM JACKET (O/S BUILDING)

DESIGN DATA

CODE: ASME SECTION VIII, DIV. 1, 2004 EDITION

DESIGN PRESS. 1350 PSIG (9308 kPa), DESIGN TEMP. 196 °F (91 °C)

M.N. DESIGN METAL TEMP. -20 °F (-29 °C @ 9308 kPa)

M.A.P. • MAX. TEMP. PSIG (kPa)

M.A.P. NEW & COLD PSIG (kPa)

HYDROSTATIC TEST PRESSURE 1755 PSIG (12101 kPa)

CORROSION ALLOW. 0.125" (3.2 mm), P.W.M.T. 83 min. @ 1150°F (625°F)

RADIOPACITY 100% PER RT-1 PER U.S.-56 & U.S.-40

HEAD THK NOM. 1.375" (34.9 mm), MIN. 1.3125" (33.3 mm)

SHELL THK NOM. 1.375" (34.9 mm), MIN. 1.375" (34.9 mm)

VOLUME 325 cu. ft. (9.2 cu. m)

WEIGHT EMPTY 34000 lbs (15422 kg)

WEIGHT FULL OF WATER 54280 lbs (24621 kg)

REF. DWG: B7201-281 CR.N.: T3001.2

- NOTES**
- 12) ALL BOLLING TO BE SA-193-87M AND SA-194-2HM MATERIAL
 - 13) ALL GASKETS TO BE SPIRAL WOUND 316 SS WITH FLEXIBLE GRAPHITE FILLER AND 316 SS INNER AND CENTRING RINGS (GREY STIRRED)
 - 14) ALL PRESSURE RETAINING MATERIAL TO BE CHEM. SELECT AS FOLLOWS: 3C + 3Mn/6 + (%C + %Mo + %V)/5 + (%Ni + %Cu)/15 ≤ 0.45.
 - 15) ALL PRESSURE RETAINING MATERIAL NOT TO EXCEED HARDNESS OF BHN 200.
 - 16) CVT EXEMPT PER U.S.-66(g)(6), U.S.-66(g) AND U.S.-20(f).
 - 17) SEAL WELD ALL INTERNAL ATTACHMENTS WHERE ACCESSIBLE.
 - 18) VESSEL EXTERIOR TO BE COMMERCIAL SANDBLASTED PER SSPC-SF6.
 - 19) ABOVE DEWPOINT, OR WHEN THE RELATIVE HUMIDITY OF THE AIR IS GREATER THAN 3F.
 - 20) UNINSULATED PORTION OF VESSEL EXTERIOR TO RECEIVE (1) COAT CLOVERLEAF RUSTEX 71029 GREY PRIMER AND (1) COAT CLOVERLEAF ENAMEL WARM GREY 2553.
 - 21) INSULATED PORTION OF VESSEL EXTERIOR TO RECEIVE (1) COAT CLOVERLEAF RUSTEX 71029 GREY PRIMER.
 - 22) VESSEL OVER-PRESSURE PROTECTION TO BE PROVIDED IN PRING.
 - 23) M1 INTERNAL PROJECTION ALONG THE LONGITUDINAL AXIS FOR UG-37 = 4.71" MIN. REFER TO DWG #B7227-267 SHIT. 2 FOR ADDITIONAL VESSEL DETAILS.
 - 23) REFER TO DWG #B7227-267 SHIT. 3 TO 6 FOR TRAY AND SEAL PAN DETAILS.

CUSTOMER REF. NO.	54000-7REV.0	JOB NO.	B7227-21
PRODUCT	SANDHILLS GAS PLANT LSD 07-25-62-06 WSM		
TITLE	AMINE CONTACTOR (C-300)		

FOR T ENERGY CORPORATION c/o BDR ENGINEERING

DRAWN	CHECKED	APPROVED	SCALE	DATE	DRAWING NUMBER
KH			1/2"=1'-0"	05/07/15	B7227-261 SHIT. 1 OF 6