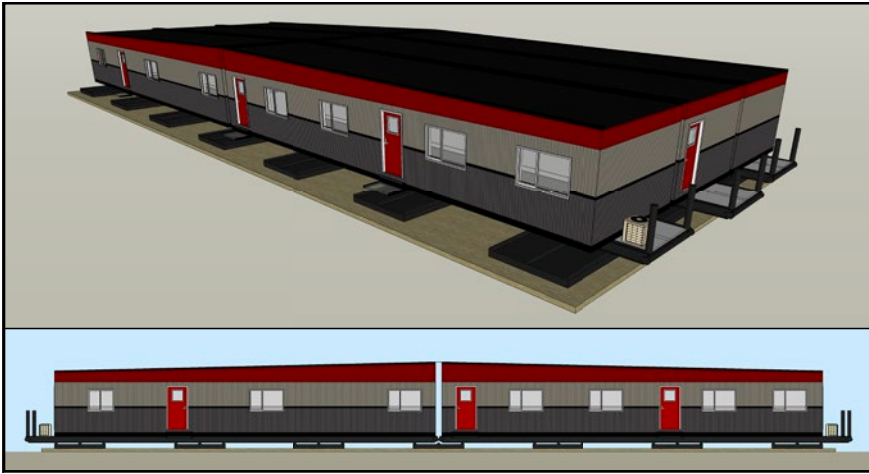


# INTEGRATED WELLSITE SYSTEMS (IWS) 42'x120'

WELLSITE TRAILERS



## SPECIFICATIONS

### BEDROOMS - 10 BED CONFIGURATION

- 5 executive bedrooms with private washrooms with independent heat/air and satellite systems
- 5 standard bedrooms with Jack/Jill washroom and satellite systems

### WASHROOM - NINE (9) WASHROOMS

- Fully pressurized washrooms each with lift station

### OFFICES - LARGE OFFICES FACING THE RIG

- Directional, drilling and geologist applications
- Work stations for 8 people
- Large orientation/safety room (seating for 10 people) with full media

## ADVANTAGES

- Facilitates communication and collaboration amongst field personnel
- Designed specifically for SAGD and Multilateral Pad drilling
- Small footprint - 120 x 42 foot (fully self-contained)
- Each unit 14' wide
- No external sewage lines or hookups on back of IWS
- Rig manager Wellsite hookup directly to IWS (sewer, water and power)
- Fully electric

