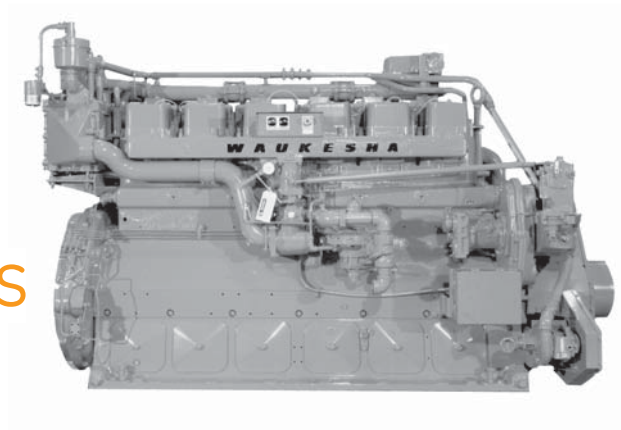


# Waukesha\* gas engines VHP\*

## F3521G

366 - 515 BHP (273 - 384 kWb)



VHP engines have been powering the world's energy infrastructure—driving compressors in gas gathering, processing and transmission operations and providing electrical power for oil and gas fields in remote corners of the globe for over five decades.

Backed by more than a century of engine building experience, GE's Waukesha engines are a sound investment that offer durable designs that perform reliably in remote applications and tolerance for variable fuel quality that maximizes power output, uptime and profitability.

## technical data

Cylinders	Inline 6
Piston displacement	3520 cu. in.(58 L)
Compression ratio	10:1
Bore & stroke	9.375" x 8.5" (238 x 216)
Jacket water system capacity	48.5 gal. (184 L)
Lube oil capacity	72 gal. (273 L)
Starting system	50 - 150 psi air/gas 24V DC electric

### Dimensions l x w x h inch (mm)

129.14 (3280) x 62.68 (1597) x 81.34 (2066)

### Weights lb (kg)

14,500 (6577)



# performance data

Intercooler Water Temperature 130°F (54°C)

		1200 RPM	1000 RPM
	Power bhp (kWb)	515 (384)	448 (334)
	BSFC (LHV) Btu/bhp-hr (kJ/kWh)	7336 (10381)	7292 (10323)
	Fuel Consumption Btu/hr x 1000 (kW)	3778 (1107)	3267 (958)
Emissions	NOx g/bhp-hr (mg/Nm <sup>3</sup> @ 5% O <sub>2</sub> )	13.00 (4815)	13.00 (4815)
	CO g/bhp-hr (mg/Nm <sup>3</sup> @ 5% O <sub>2</sub> )	9.00 (3333)	9.00 (3333)
	NMHC g/bhp-hr (mg/Nm <sup>3</sup> @ 5% O <sub>2</sub> )	0.30 (111)	0.30 (111)
	THC g/bhp-hr (mg/Nm <sup>3</sup> @ 5% O <sub>2</sub> )	2.00 (741)	2.00 (741)
Heat Balance	Heat to Jacket Water Btu/hr x 1000 (kW)	1231 (361)	1061 (311)
	Heat to Lube Oil Btu/hr x 1000 (kW)	191 (56)	164 (48)
	Heat to Radiation Btu/hr x 1000 (kW)	202 (59)	194 (57)
	Total Exhaust Heat Btu/hr x 1000 (kW)	919 (269)	779 (228)
Intake/ Exhaust System	Induction Air Flow scfm (Nm <sup>3</sup> /hr)	741 (1139)	641 (985)
	Exhaust Flow lb/hr (kg/hr)	3300 (1497)	2852 (1294)
	Exhaust Temperature °F (°C)	1059 (570)	1041 (561)

All data according to full load and subject to technical development and modification.

Consult your local GE Energy's representative for system application assistance. The manufacturer reserves the right to change or modify without notice, the design or equipment specifications as herein set forth without incurring any obligation either with respect to equipment previously sold or in the process of construction except where otherwise specifically guaranteed by the manufacturer.



GE Energy  
1101 West Saint Paul Ave.  
Waukesha, WI 53188-4999  
P: 262.547.3311  
F: 262.549.2759

Visit us online at:  
[www.waukeshaengine.com](http://www.waukeshaengine.com)

©2011 General Electric Company  
All Rights Reserved

7008 1211 GEA-19025