

APPURTENANCE & ATTACHMENT WELD DETAILS (nts)

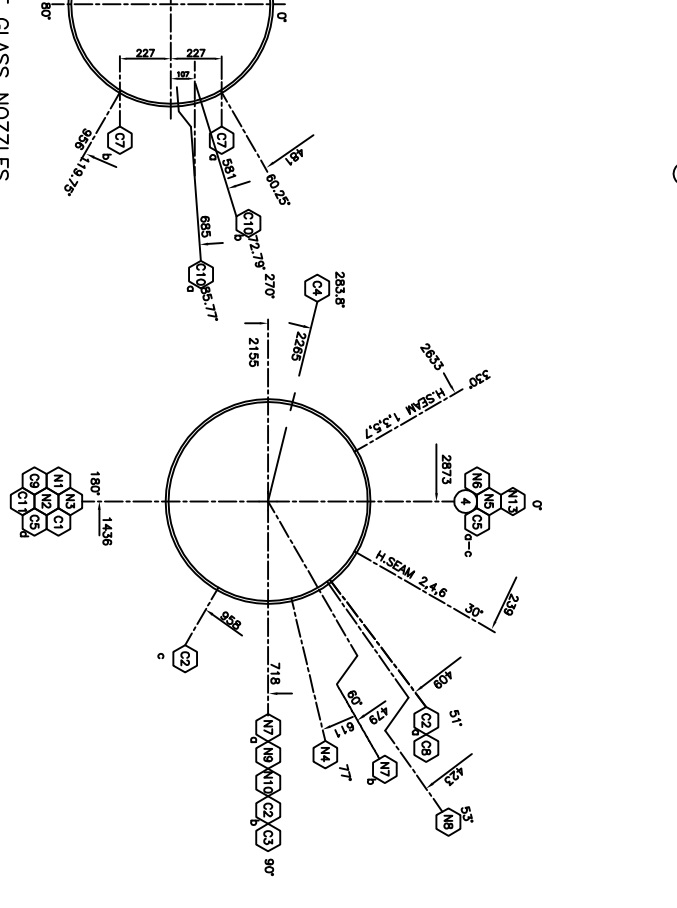
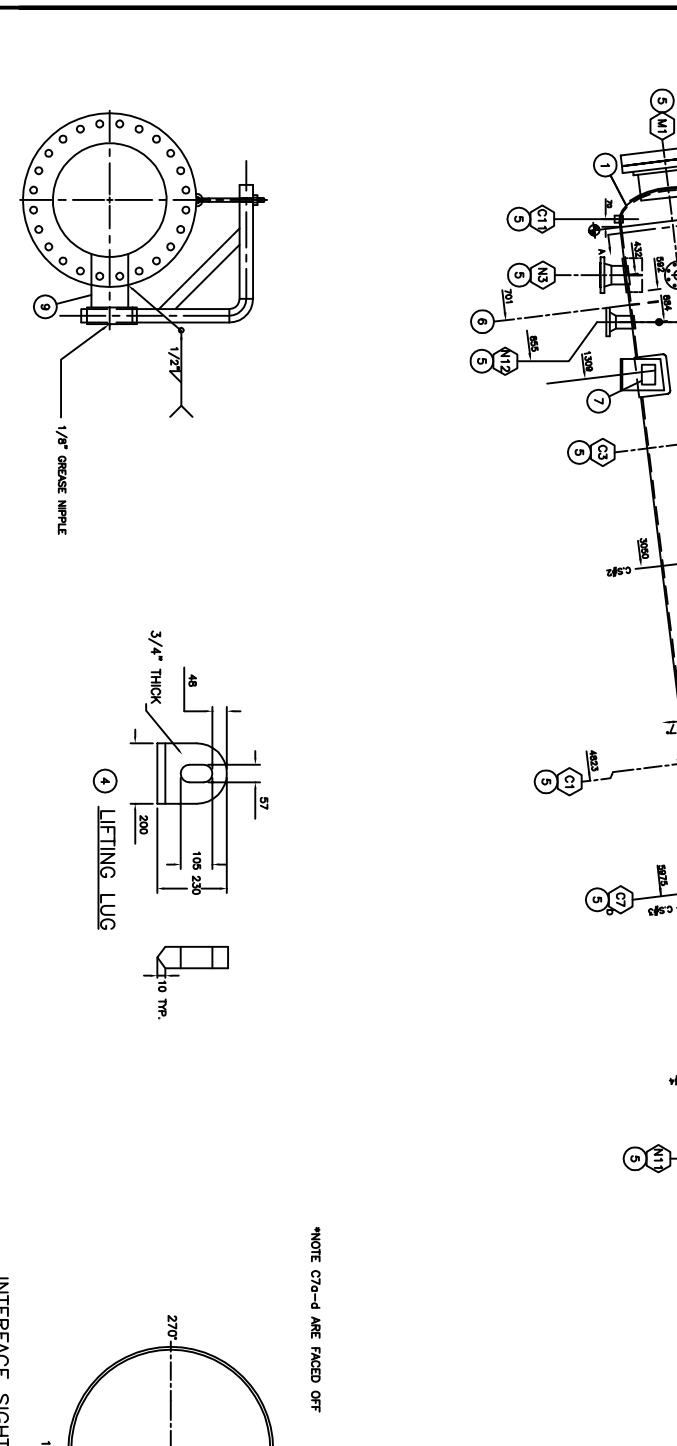
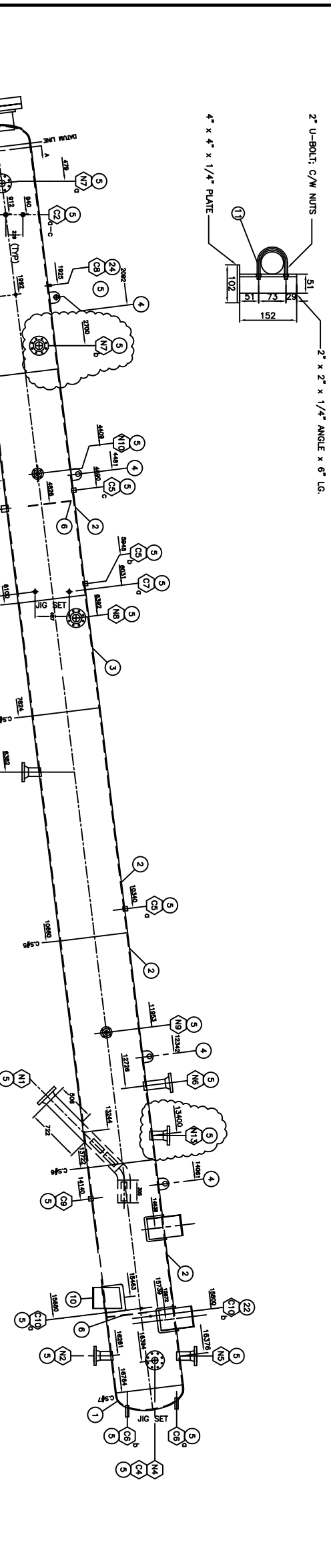
TYPE	WELD DETAIL	TRANSITION	WEIR DETAIL	LIFTING LUG	WEAR PLATES
N1 THRU N9	N1,N2,N4,N5,N6,N7,N8,N9	C1,C2,C3,C5,C6,C7,C8	M1,N3	CIRC SEAMS	LONG SEAMS
TYPE 1 MIG ROOT					
COR-6	COR-8	COR-8	COR-8	COR-6 COR-7	COR-6 COR-7
GENERAL NOTES:	1. ALL EXTERIOR REPAIRS C/W 1/4" NPT WEEP HOLE. 2. NOZZLES N4, N7 AND N8 TWO HOLE TO THE WORLD. 3. NOZZLES N2, N3, N5, N6, N11 AND N12 LEVEL TO THE WORLD. 4. INTERNALLY COAT WITH 12-15 MILS DFT ABOVE ZSS. 5. EXTERNALLY COAT WITH 12-15 MILS DFT ABOVE ZSS. 6. SANDWICH INTERNAL NOZZLES 1/2" PERIMETER C/W BRK SEALER. 7. ALL NOZZLE PROJECTIONS ARE ALONG NOZZLE CENTERLINES.				

NOZZLE SCHEDULE

MK#	NO.	SIZE	SCH.	RATE	TYPE	PROJ. INT. EXT.	REPAD.	FILLET SIZES	DESCRIPTION
							NO.	A B C	
M1	1	20"	60	300	RS50	65mm 254mm	✓	1/2" 1/2" 1/4"	MANWAY
N1	1	6"	XXH	300	RRIN	—	✓	1/2"	INLET
N2	1	4"	XXH	300	RRIN	13mm 229mm	✓	1/2"	OIL OUTLET
N3	1	6"	80	300	RRIN	13mm 229mm	✓	1/2"	WATER OUTLET C/W VORTIX BREAKER
N4	1	4"	160	300	RRIN	32mm 229mm	✓	3/8"	OIL BOX LEVEL CONTROL (3-THRS)
N5	1	4"	160	300	RRIN	32mm 229mm	✓	3/8"	GAS OUT
N6	1	4"	160	300	RRIN	25mm 343mm	✓	3/8"	FLUIDS RETURN (FUTURE GAS BOOT)
N7a	1	4"	XXH	300	RRIN	25mm 229mm	✓	3/8"	LEVEL CONTROLLER
N7b	1	4"	XXH	300	RRIN	25mm 229mm	✓	1/2"	INTERFACE CONTROLLER (PNEUMATIC)
N8	1	4"	XXH	300	RRIN	25mm 229mm	✓	1/2"	DESAND WATER INLET
N9	1	2"	XXH	300	RRIN	13mm 229mm	✓	1/2"	DESAND WATER INLET
N10	1	2"	XXH	300	RRIN	13mm 229mm	✓	1/2"	SAND AND WATER OUTLET
N11	1	4"	160	300	RRIN	13mm 227mm	✓	1/2"	SAND AND WATER OUTLET
N12	1	4"	160	300	RRIN	13mm 227mm	✓	1/2"	RELIEF VALVE
N13	1	4"	160	300	RRIN	25mm 229mm	✓	3/8"	WATER BOTTLE BLOW DOWN
C1	1	2"	—	6000	FILL ORG	—	✓	3/8"	SAMPLE LINES
C2	1	1"	—	6000	FILL ORG	—	✓	3/8"	SAMPLE LINES
C2a	2	1"	—	6000	FILL ORG	—	✓	3/8"	SAMPLE LINES
C3	1	1"	—	6000	FILL ORG	—	✓	3/8"	SAMPLE LINES
C4	1	2"	—	6000	FILL ORG	—	✓	3/8"	HAN LINE SHUT DOWN (3-THRS DRAIN)
C5a-6	3	1"	—	6000	FILL ORG	—	✓	3/8"	INTERFACE PROBE AND ALTERNATES
C5a-8	2	3/4"	—	6000	XL ORG	—	✓	3/8"	OIL SIGHT GLASS
C7a-b	2	3/4"	—	6000	XL ORG	—	✓	3/8"	INTERFACE SIGHT GLASS
C8	1	1/2"	—	6000	XL ORG	—	✓	3/8"	P.L.
C9	1	1"	—	6000	FILL ORG	—	✓	3/8"	SAND SAMPLE POINT
C10	1	2"	—	6000	FILL ORG	—	✓	3/8"	INTERFACE SAMPLE POINT
C11	1	1"	—	6000	FILL ORG	—	✓	3/8"	DRAIN

MATERIAL LIST

MK#	QTY.	DESCRIPTION	MATERIAL	WT.
2	2	SE HEAD - 4867.0 x 0.57mm x 0.6925" mm	SAS16-20N	652
3	1	SHELL 4867.0 x 0.57mm x 10'-07.6	SAS16-20N	9450
4	4	LIFTING LUGS (SEE DETAIL)	SAS16-20N	645
5	1	NOZZLE & COUPLING DETAILS	SAS16-20N	55
6	1	WATER/OIL/DESAND WEIR ASSEMBLY	SAS16-20N	—
7	1	BRACKET - NAME PLATE HOLDER	SAS16-20N	—
8	1	NAME PLATE	SAS16-20N	5
9	1	DOOR PLATE 3/4" THICK	SAS16-20N	4
10	4	DESAND CLIP	A36	25



ESTIMATED SHIPPING WEIGHT 13,000 LBS.

NO.	DATE	DESCRIPTION	BY	COMP.
E	01/05/03	ISSUED FOR ABSA APPROVAL		
A	09/11/23	ISSUED FOR ABSA APPROVAL		

CUSTOMER: NORTHSTAR ENERGY
 TITLE: GENERAL ARRANGEMENT
 36" 320 PSI
 914mm (36") I.D. x 16784mm (35'-0") LG. S/S
 INCLINE FREE WATER KNOCK OUT

DATE: 01/05/03
 DRAWING NO.: 99-MFWKO-06
 SCALE: 1:30

APPROVED: [Signature]
 DESIGNED BY: A. SMITHSON
 CHECKED BY: E