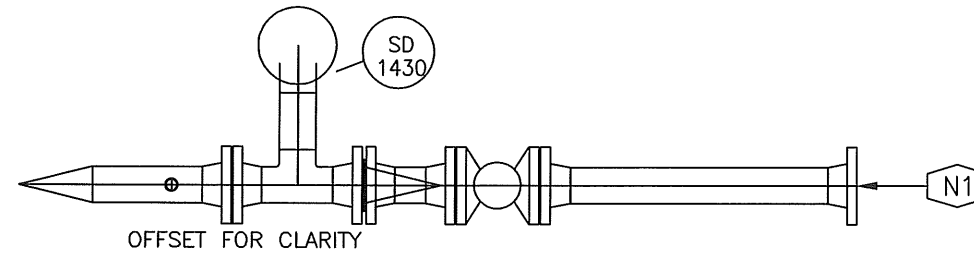


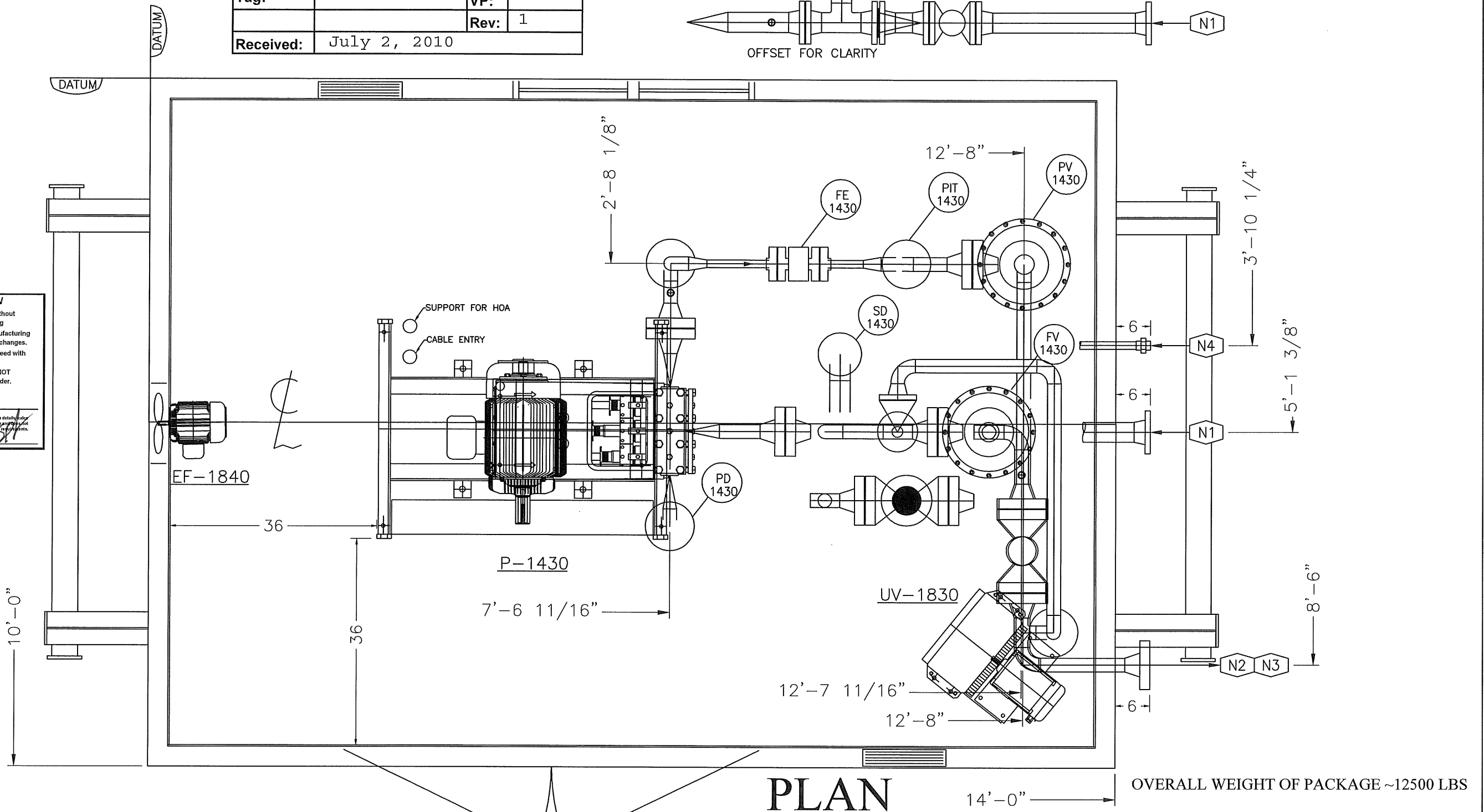
Project :	11848	PO:	P-004
Tag:		VP:	
		Rev:	1
Received:	July 2, 2010		



VENDOR DRAWING REVIEW	
<input checked="" type="checkbox"/>	A. Approved. Manufacturing may proceed without changes. Submit Certified As Built Drawing
<input type="checkbox"/>	B. Reviewed with comments. Resubmit. Manufacturing may proceed subject to incorporating the changes.
<input type="checkbox"/>	C. Reviewed with comments. Resubmit. Proceed with material order only.
<input type="checkbox"/>	D. Reviewed with comments. Resubmit. DO NOT proceed with manufacturing or material order.
<input type="checkbox"/>	E. Information/Certified/As-Built
<input type="checkbox"/>	F.

Permission to proceed does not constitute acceptance or approval of design details, analysis, test methods or material developed or selected by the supplier or manufacturer or release the supplier from compliance with the contract terms and conditions.

DATE: July 2010 SIGNED: [Signature]



# PLAN

### UNIT CONNECTIONS / OPENINGS

MK	FUNCTION	SIZE & TYPE	MK	FUNCTION	SIZE & TYPE
N1	PROCESS INLET	3" 150# RFWN	N2	PROCESS OUTLET	2" 1500# RFWN
N3	PROCESS BYPASS	2" 1500# RFWN	N4	INSTRUMENT AIR	1" 3000# NPT
-			-		
-			-		
-			-		
-			-		

**NOTES:**  
1. NOT TO BE USED FOR CONSTRUCTION, UNLESS-STAMPED "ISSUED FOR CONSTRUCTION"

THIS DRAWING IS THE PROPERTY OF WESTPOWER EQUIPMENT LTD. AND IS NOT TO BE COPIED, TRANSMITTED, OR USED IN ANY WAY WITHOUT WRITTEN CONSENT.

REV	DESCRIPTION	DATE	DWN	CHK
-	-	-	-	-
-	-	-	-	-
-	-	-	-	-
1	CHANGED AS PER CUSTOMER REQUEST	JUNE/30/10	HW	RP
0	ISSUED FOR CONSTRUCTION	JUNE/18/10	HW	RP

**westpower equipment ltd.**  
CALGARY, ALBERTA

ABSA AUTHORIZATION NO. AQP 21428  
APEGGA PERMIT TO PRACTICE# P-7612

CUSTOMER: <b>SWAN HILLS SYNFUELS LP</b>		CUSTOMER P.O.# 11848-P-004
LOCATION <b>SWAN HILLS</b>	CONSULTANT <b>DPH FOCUS</b>	
DRAWN HW	DATE JUNE/18/10	TITLE GENERAL ARRANGEMENT PLAN VIEW
CHECKED RP	DATE JUNE/18/10	DWG.#-LAYOUT NAME
SHEET 1/1	SCALE 1:18	REV# 1
P1206-GA-PLAN		