

Login	Home	Quality Assurance	Help	Exit
-------	------	-------------------	------	------

FILTER INSPECTION REPORT

Inspection Report

Print

Back

Cancel

Notification Number 6075961 Work Order 6079051
 Notification Desc FILTER, HORIZONTAL 60" OD X 16'0" Maintenance Plan QPFILTER1264
 Tasklist Operation (1Y Inspection Interval) 1Y Code Inspection Filter - Sweet Servi

Equipment Static Data

Equipment Number 66120331 Equipment Description FILTER, HORIZONTAL 60" OD X 16'0"
 Class FILTER Tag Number
 Serial Number 626132 Year Built 2006
 Manufacturer BROMLEY MECHANICAL SERVICES
 Location SS-SK-052-00003 Location Description MATADOR 14-24 COMPRESSOR STATION
 Provincial Number 0557602 PM Activity Code
 Status Codes NOPR ORAS Equipment Status In Service - Fully Utilized

CRN Number T4927.231 Code Stamp U Fluid Description
 Fluid Service SWEET Internal Coating Exists N Length 16.00 FOOT
 MDMT - Min. Design Metal Temp -20 DEGF Shell MAWP 720 PSI Stress Relief
 Vessel Diameter 60.0 " Volume 317.33 CUFT X-Ray

PRD Static Data

Equip ID	Location	Size		Set Pressure	Capacity	Manufacturer	Serial Number	Model Number	Next Service Date
		Inlet	Outlet						

Process Data

Product Description NATURAL GAS Fluid Service Sweet Sour PPM
 Operating Pressure 120 KPA Operating Temperature 11 °C

Pressure Test

Test Completed Yes No Test Acceptable Yes No Test Report #

PSV Data

Tag/Serial No.	Location	Size		Set Pressure	Capacity	Model / Type	Service Date
		Inlet	Outlet				
66120339	TOP SHELL PIPING	2"	3"	4964 KPA	11076 SCFM	FARRIS	2008.11.28

Inspection History

Inspected By BURTON D Inspection Date 2008.11.28

Inspection Summary

-external,internal inspection completed Nov.28,2008
 -internal corrosion pitting found to be minor or corrosion rate minimal

at this time.

-2" crash dump internal nozzle has a small erosion cut at top of nozzle of 0.035" depth (see photo)

-please change static data to read Inlet Separator,not (Filter)

Recommendations

-recommend applying EC-124 grout repair coating to 2" crash dump nozzle and other minor corroded areas mostly on south head in summer of 2009

Repairs Completed

no grout repairs done at this time,temperature of vessel was below coating manufacturer recommendations of 10 C

Equipment Status

Integrity Status Suitable for Continued Service Immediate Repairs Required Replace
 Future Repairs Required

Inventory Status In Service - Fully Utilized Idle Surplus Scrap

QA Activities

Leave As-Is Weld Overlayed Part / Component Replaced
 Equipment Replaced Grind Dressed Patch Installed
 MAWP Derated Coating - Cleaned & Patched Coating - Removed & Replaced
 Defect Removed & Rewelded Part Cleaned Lapped & Dressed
 Epoxy Patched

Noncompliances or Inspection Deficiencies Issued

External Visual Inspection

-shell has some minor oxidation or rust in a few small areas
 -saddle supports are bolted (4 bolts),all weldments are acceptable condition
 -all attached piping,instrumentation,bolting,supports,clamps are secure
 -some pipes have a small amount of minimal rust oxidation
 -temperature and pressure gage appear operational
 -PSV was sent for servicing at inspection time,is secured to piping on north vessel end
 -nameplate secure,legible,registered correctly by plate data
 -new gasket was installed at manway entrance,bolting secure

External NDE Examination

Internal Visual Inspection

-manway nozzle,blind plate,support arm in good condition
 -inlet nozzle has welded support around expanded metal,access to outlet nozzle was not removed at inspection,no signs of any erosion or corrosion
 -2" crash dump nozzle has a small eroded cut on inner west side of nozzle
 -all other nozzles were in good condition with no corrosion found
 -4" north nozzle with vortex breaker is in good condition. Nozzle is not used,external side of nozzle is blinded.
 -22" ID x 36" deep belly pot is in good condition, 2-4" check valve flappers were found at bottom of pot. Drain has a vortex breaker plate covering nozzle,felt with fingers,could not detect any noticeable defects
 -all weldments are visually acceptable
 -inlet nozzle and deflector are in good condition
 -north head has some small diameter pitting that was detected on Sept. 2007 inspection as well, max pit depth 0.063"
 -NW lower shell has a small corroded pit 0.035"
 -upper shell has some minor scale with minor pitting up to 0.007"

Internal NDE Examination

Pit Depth Gage Measurements

South head

- towards top of head 0.063" x 0.250" diameter

-mid-lower west side - 0.033" , 0.038" , 0.054" (all approx. 0.250" diameter)
 Shell
 -Lower North West shell - 0.023" x 0.375" diameter
 Shell belly 2" crash dump nozzle - small erode cut approx. 0.035" depth x .187" width x 0.250" length

Data Integrity

-PSV serviced at inspection time,passed lift test at 721 psi,set is 720 psi
 -PSV service interval increases to 3 years service interval
 -corroded pit depths were at 0.050" in Sept. 2007 inspection, deepest pit depth now is 0.063", corroded 0.013" in 14 months
 -CR appears to be 0.0108" annually
 -it may be possible that the north head had a few corrosion spots in metal when it was constructed ,otherwise the corrosion rate would be 0.0315" annually

Inspection Interval

-set at a 1 year interval,to have patch coating applied to eroded and small corroded areas,when temperatures are at least 10C for substrate

Damages

Inspector Certification

I, the undersigned certify that the above equipment has been inspected in accordance with the assigned task list and that statements within this report are correct and represent inspection findings.

Inspector Name BURTON D Inspector Signature 
 Inspection Company HUSKY Date DEC 01 2008

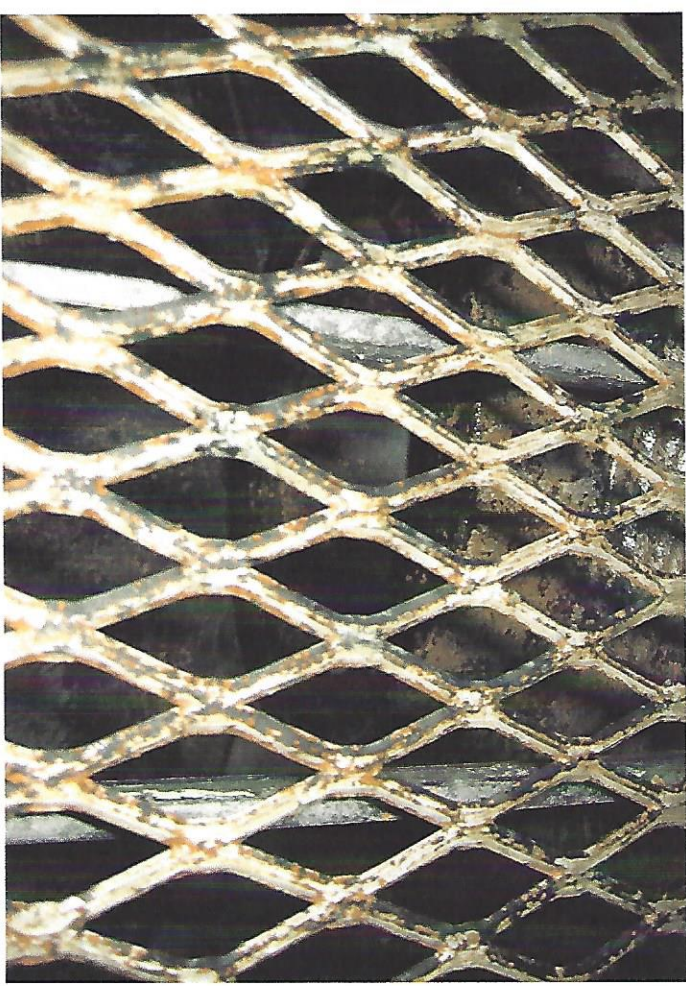
Lead Inspector's Acceptance & Schedule Confirmation

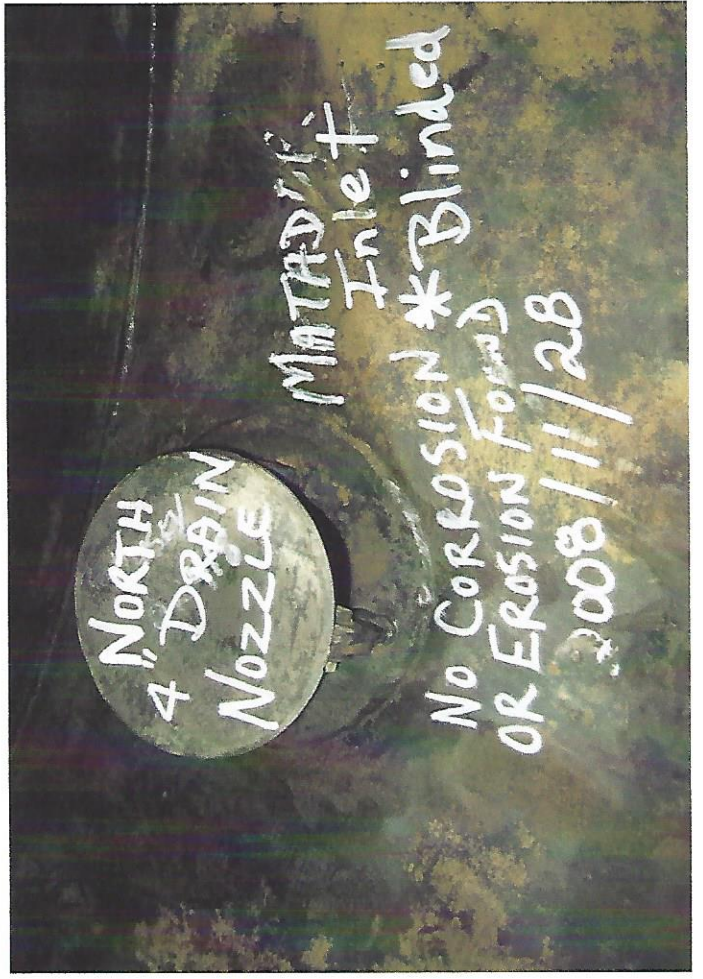
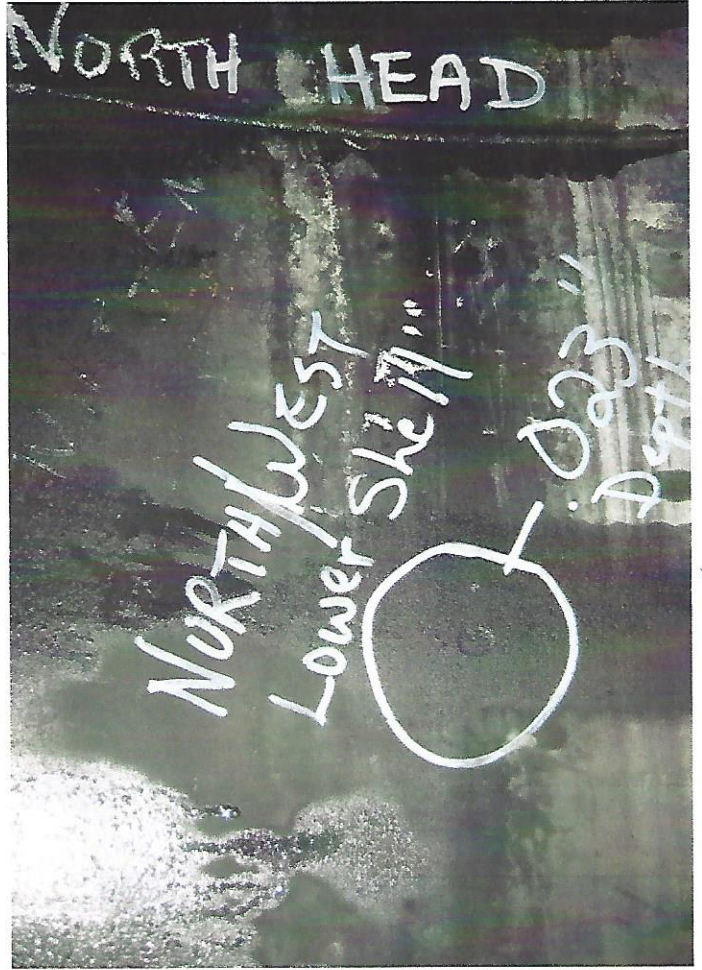
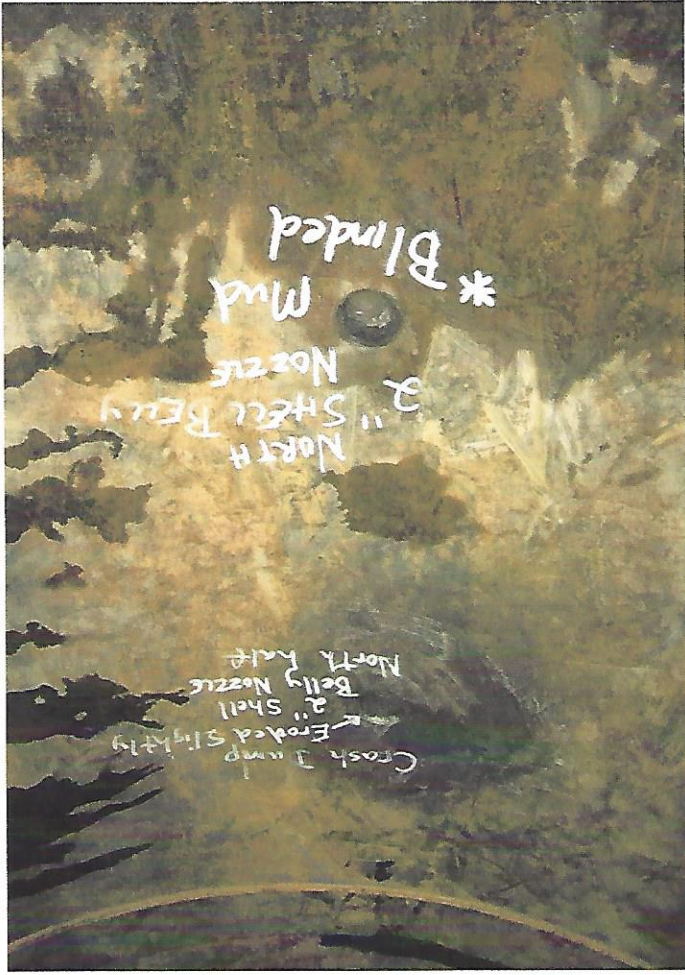
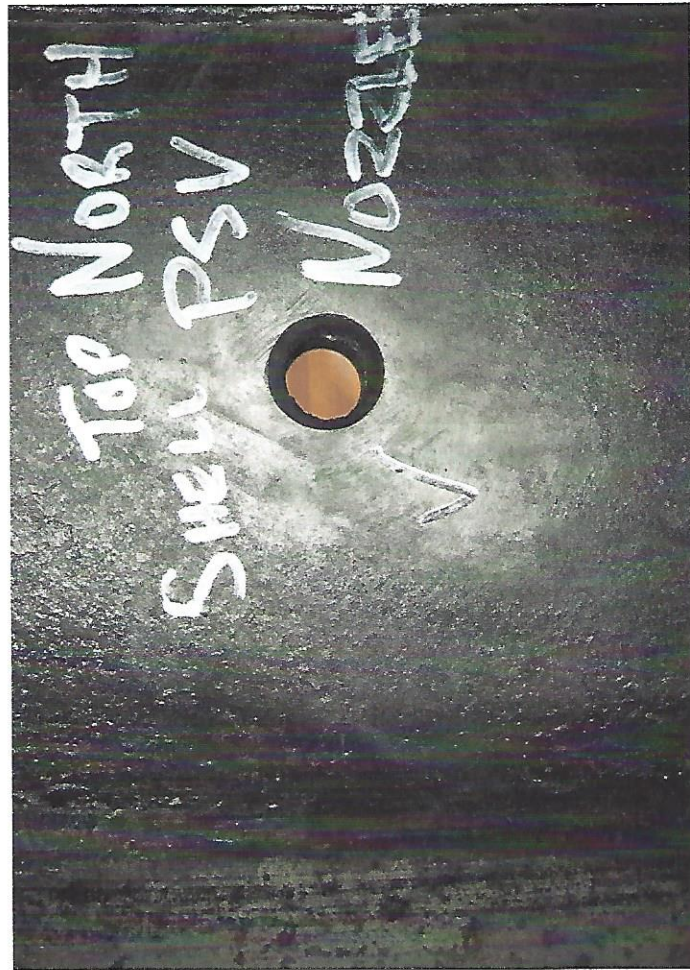
Lead Inspector _____ Signature _____ Date _____
 Vessel Inspection Interval Leave as-is / Change to: _____
 PSV Inspection Interval _____ Leave as-is / Change to: _____

Top









2" Nozzle
Shell Belly
* Blinded
✓ Good Condition

Crash Dump
Eroded Slight
2" Shell
Belly Nozzle
North Half

22" ID x 36" Depth

