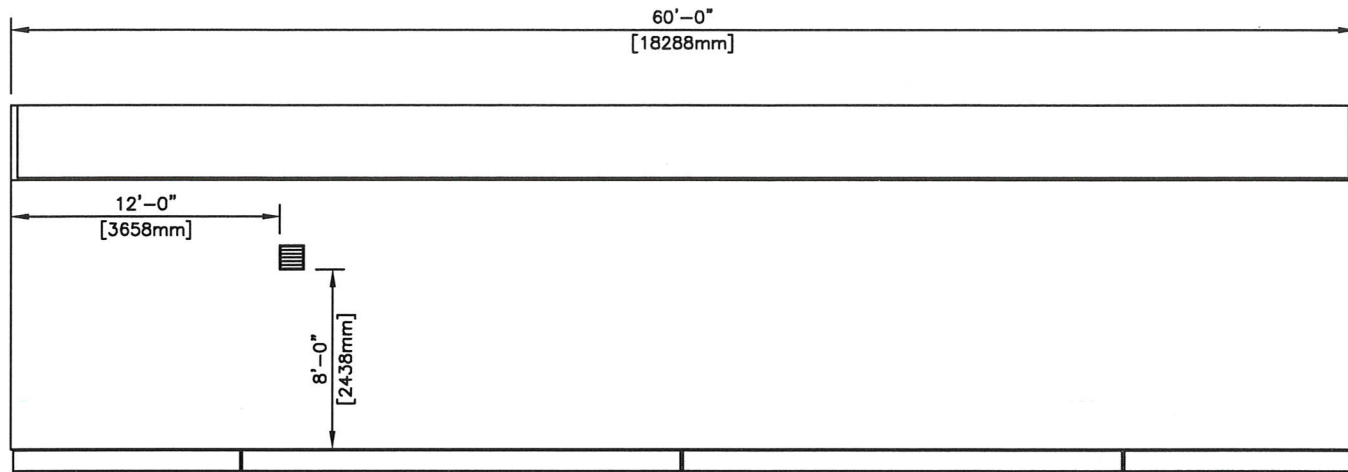
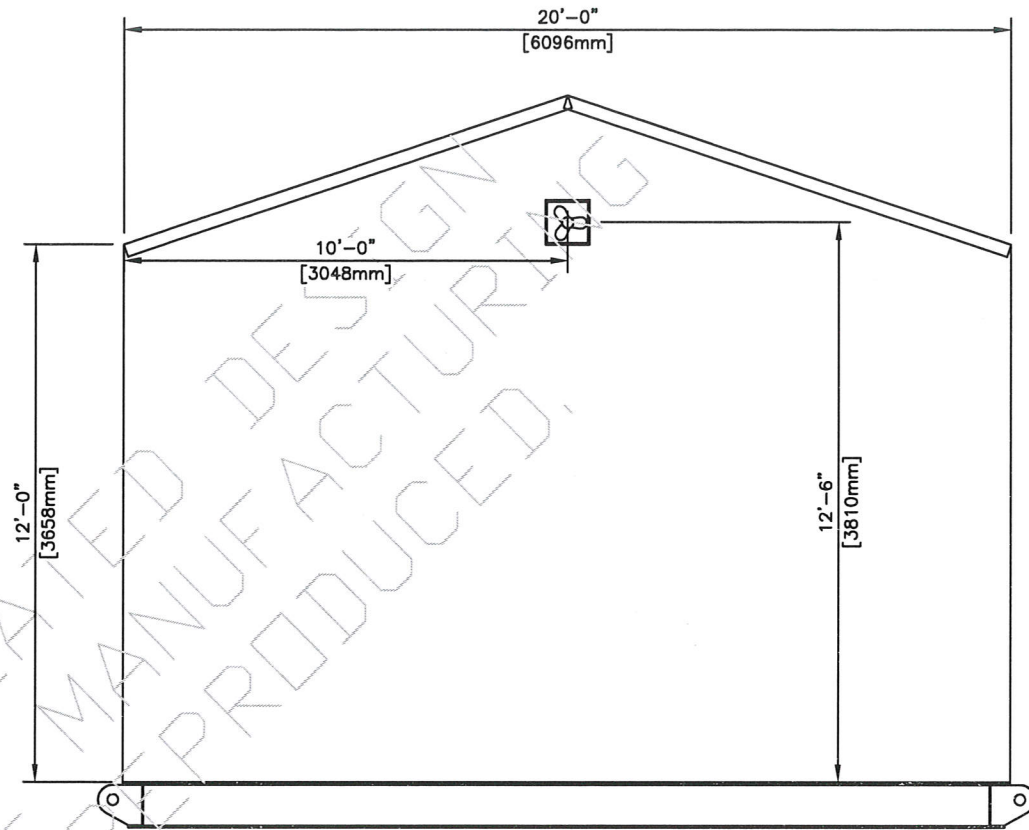


THE CONTENTS OF THIS DRAWING ARE CONFIDENTIAL AND MAY NOT BE REPRODUCED WITHOUT WRITTEN PERMISSION

PROPERTY OF CAPE MANUFACTURING LTD.



ELEVATION VIEW A
SCALE: 1:100

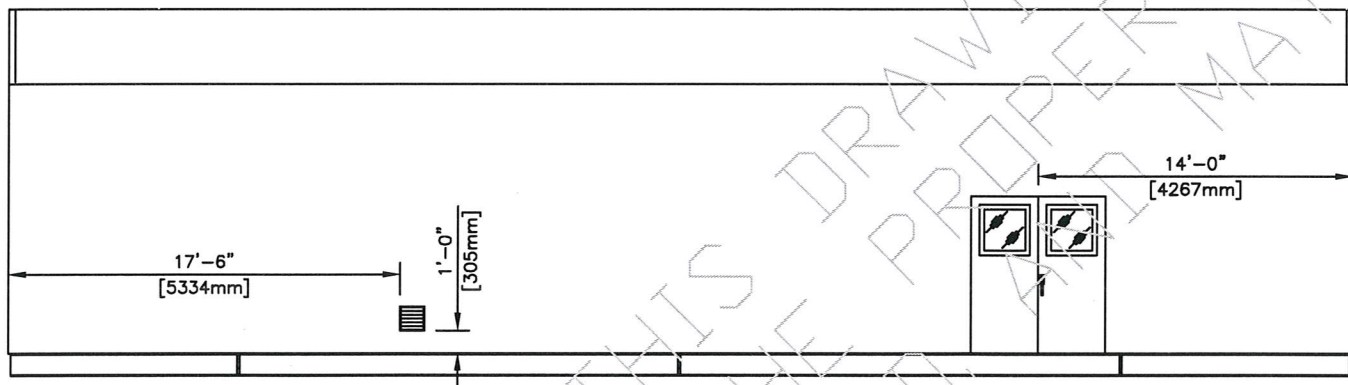


ELEVATION VIEW B
SCALE: 1:50

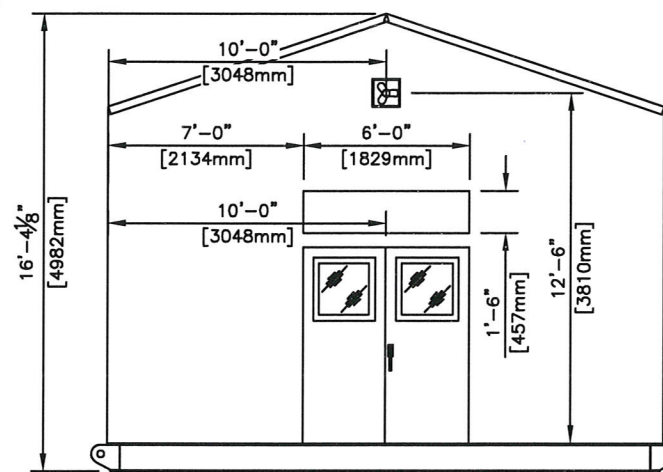
Issued For Construction

Issued to Fab. Manager *kg* Oct 17 2016

Released for Fabrication *DK* Oct 17 2016



ELEVATION VIEW C
SCALE: 1:100



ELEVATION VIEW D
SCALE: 1:80

TAG	QTY	DESCRIPTION
BUILDING		20'-0" WIDE x 60'-0" LONG, SELF-FRAMER
ROOF		GABLE STYLE, 12'-0" EAVE
INSULATION		R12 IN ROOF & WALLS c/w 6 MIL VAPOR BARRIER
EXTERIOR		22 GA GALVALUME
INTERIOR		24 GA WHITE FLUTED ALUMINUM
DOORS	2	6' x 7' 20 GA STEEL DOUBLE c/w IGW WINDOW
HARDWARE		CHECK CHAIN, PNAIC BAR & LOCK, & WEATHER STRIPPING
TRANSOM	1	72" x 18"
VENTS	2	12" x 12" ADJUSTABLE LOUVRES & SCREENS
OPTIONS		DOOR CANOPIES, ICE RAKES, EAVES TROUGH & DOWNSPOUTS
FANS	2	ET 16-1, XP, 120V/1PH/60Hz w/ HOODS

NO.	DATE	REVISION	BY	APP
0	16-10-17	ISSUED FOR CONSTRUCTION	KG	<i>kg</i>

CAPE MANUFACTURING LTD.
 PO BOX# 216 HALKIRK, AB T0C 1M0
 TELEPHONE: (403) 884-2442

CLIENT:	PEYTO EXPLORATION & DEVELOPMENT CORP.
c/o:	ONSTREAM ENGINEERING LTD.
LSD:	11-12-44-13 W5M
DATE:	16-10-06
JOB NO.:	CML-160550
SCALE:	SEE DWG.
DRAWN BY:	KG
CHECKED BY:	KC
SHEET 1 OF 1	

20'-0" x 60'-0" BLDG	
12'-0" EAVE	
w/ 2 HEATERS & 2 EXHAUST FANS	
DWG NO.:	CML-160550BLDG
REV.:	0