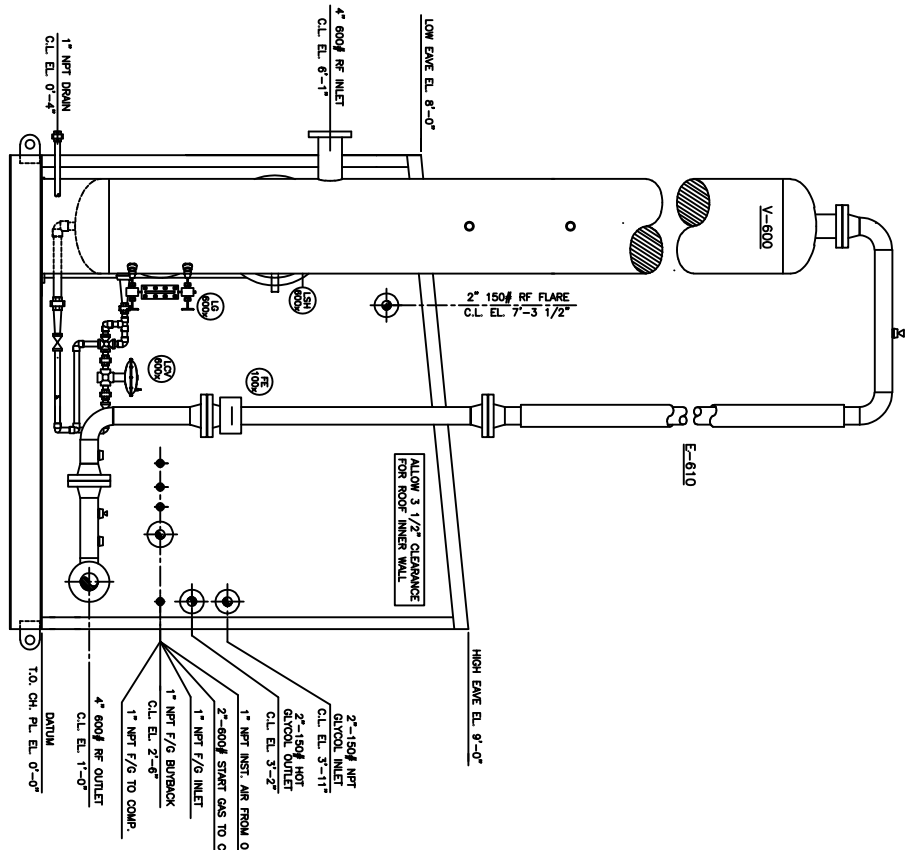
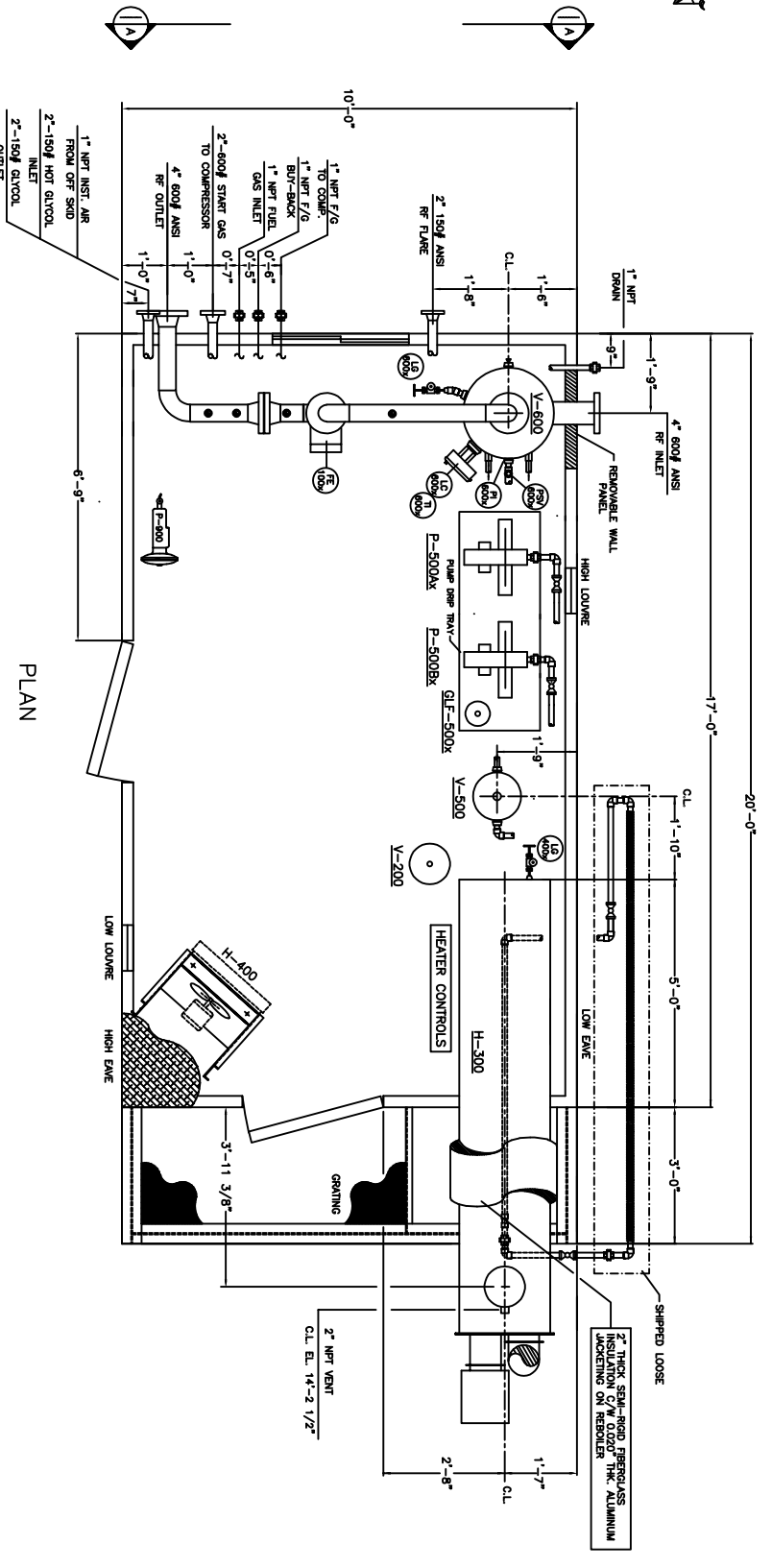
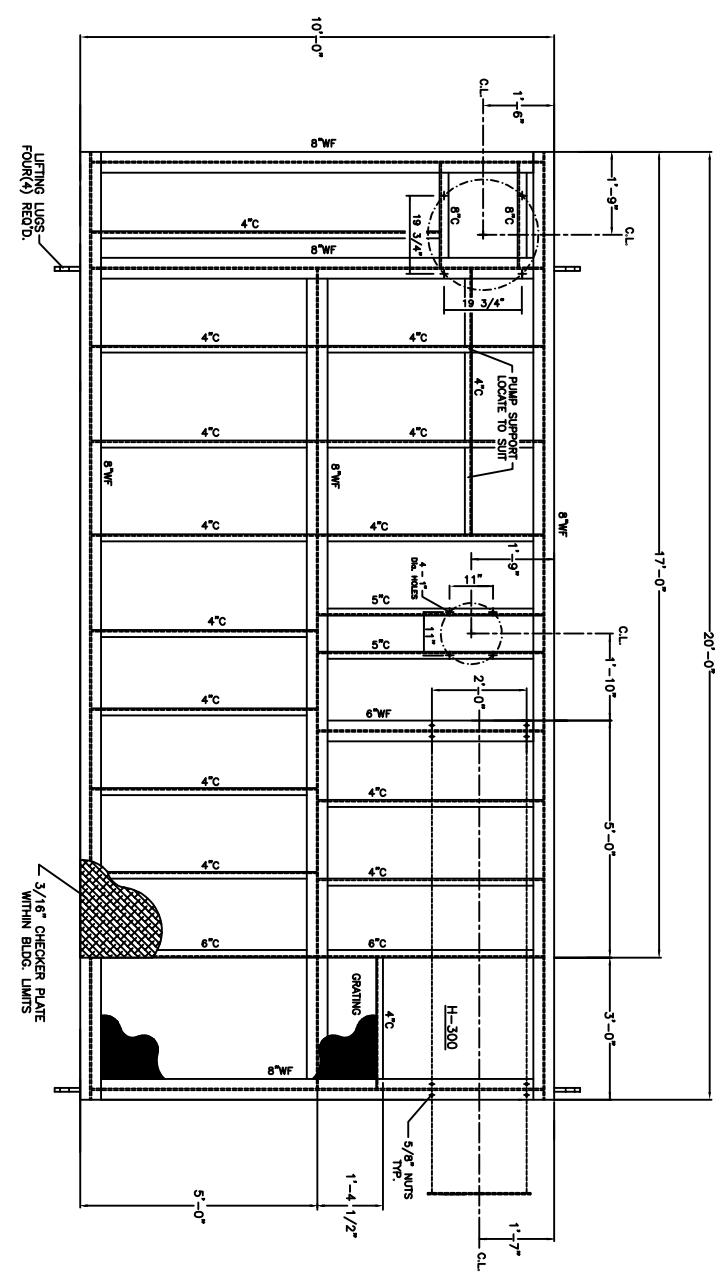


1A



VIEW 'A-A'



SKID LAYOUT

- GENERAL NOTES:**
1. SEE DWG. # F-96-2987-553
  2. Unit to be commercially sandblasted to SSPC-SP-6 and shop-primed with Dac(1) coat Zinc Chromate (HIGH TEMP. ALUMINUM ON REBOILER & STACK)
  3. Finish Paint: TMD coats Industrial Enamel (DNE TONE COLOR), Warm Grey
  4. Radiography on Piping relating to be: See Line Specs on P&ID
  5. Radiography on Piping relating to be: See Line Specs on P&ID
  6. Radiography on Piping relating to be: See Line Specs on P&ID
  7. Radiography on Piping relating to be: See Line Specs on P&ID
  8. Radiography on Piping relating to be: See Line Specs on P&ID
  9. Radiography on Piping relating to be: See Line Specs on P&ID
  10. Radiography on Piping relating to be: See Line Specs on P&ID
  11. Radiography on Piping relating to be: See Line Specs on P&ID
  12. Radiography on Piping relating to be: See Line Specs on P&ID
  13. Radiography on Piping relating to be: See Line Specs on P&ID
  14. Radiography on Piping relating to be: See Line Specs on P&ID
  15. Radiography on Piping relating to be: See Line Specs on P&ID
  16. Stress Relieving Details: See Line Specs on P&ID
  17. XP electrical hook-up of Catalytic Heaters: N/R
  18. Other Electrical Work: N/R
  19. SEE DWG. # F-96-2987-553
  20. SEE DWG. # F-96-2987-553

- SKID** : DPSCD Standard skid c/w 3/16" checker plate within building limits and four(4) lifting lugs  
 SIZE : 10'-0" wide x 20'-0" long
- BUILDING**  
 10'-0" wide x 17'-0" long DPSCD STANDARD BUILDING WITH  
 EAVE HEIGHTS: 8'-0" / 9'-0"  
 INSULATION: R-19 Batt type F/Glass VAP BARRIER: 4 MIL ALUMINUM  
 WINDOWS: DNE(1) 36" x 36" double glazed c/w half screen  
 DOORS: 1 TMD(2) 3' x 7' buy-out panic hardware door(s) c/w  
 - 1/2" window check chain  
 - Extruded aluminum threshold  
 - 1/2" window check chain  
 - Extruded aluminum threshold
- LIFTERS** : TMD(2) courses c/w sliders & screen, SIZE: 12" x 12"

REVISIONS		REVISIONS		REVISIONS		REVISIONS	
No.	DATE	BY	APP.	No.	DATE	BY	APP.
0	12/02/98	FOR APPROVAL	DG				
1	12/16/98	REVISED AS PER CUST. M/U.	DG				
2	01/14/99	ADDED METHANOL PUMP	DG				
3	02/05/99	ADDED F.G. BUY-BACK SYSTEM CONN.	DG				
4	04/07/99	AS BUILT	LV				

ENGINEERS RECORD		ENGINEERS RECORD	
DATE	BY	DATE	BY
DEC. 02, 1998	DG		

CLIENT	ENCAI ENERGY
PROJECT	c/o CONCOISE & ENGG. SVCS.
TITLE	DEHYDRATION PACKAGE
SCALE	AS SHOWN
DATE	1-24-99

REV.	DATE	BY	APP.
1	1-24-99	LV	

08243501