

PSV OPTION 240  
PSV-504 SET @ 707 PSIG

VESSEL, SEP. 1 STG  
16" NOM.  
WITH FILTER ELEMENTS (7)  
707 PSIG MAWP @150°F  
S/N: TBA  
CRN: TBA  
TBA

ARIEL CYLINDERS  
CYL.#1 3-7/8" JG 1270 PSIG MAWP  
CYL.#2 3-7/8" JG 1270 PSIG MAWP

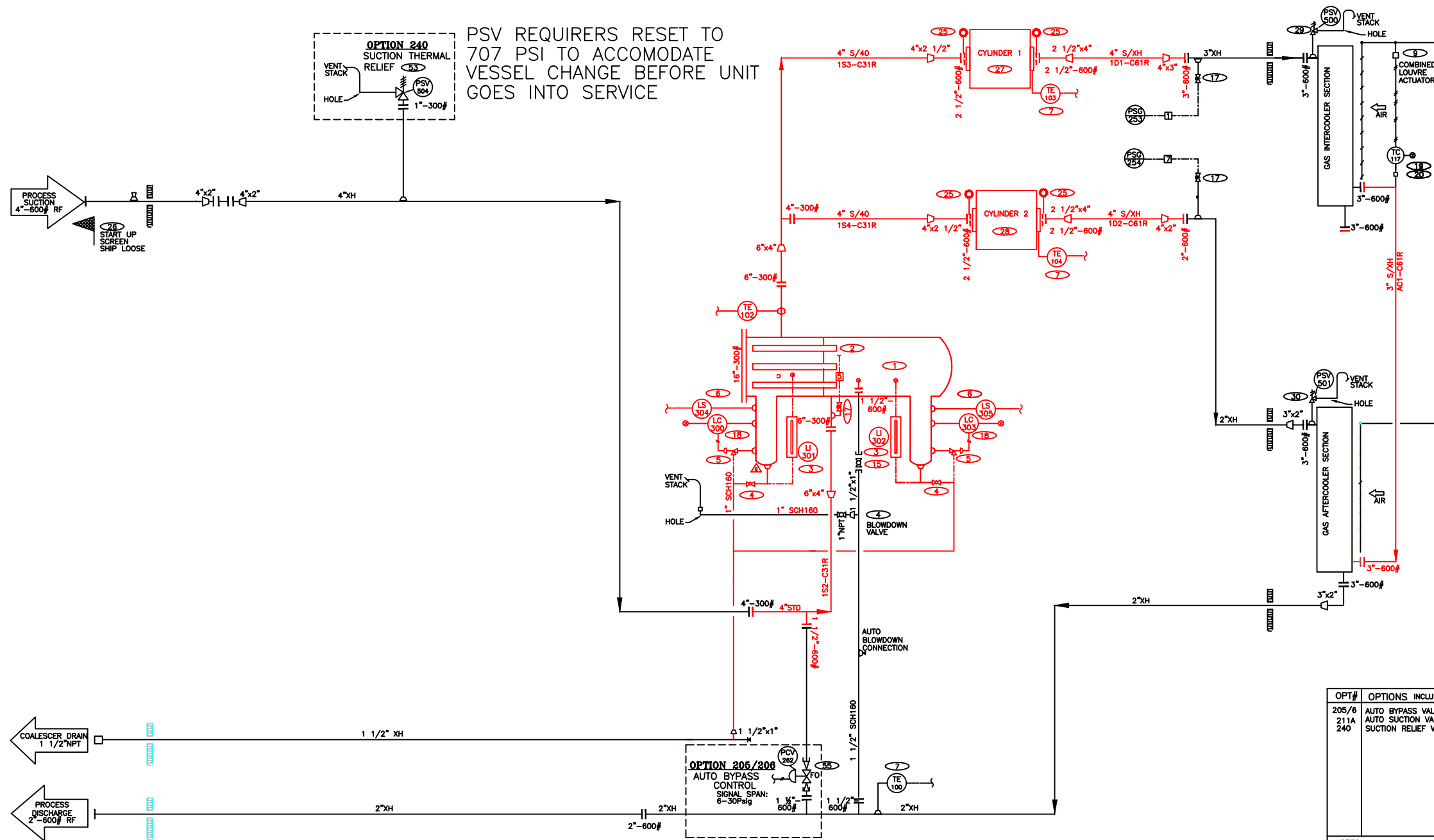
PSV  
PSV-500 SET @1270 PSIG  
PSV-501 SET @1270 PSIG

AXC 72 AVI  
COOLER  
IC SECTION: 1315 MAWP @300°F  
S/N: 014434.1  
CRN: K0217-2136  
AC SECTION: 1315 MAWP @300°F  
S/N: 014434.2  
CRN: H6642-213

MATERIAL LIST

PART	ITEM	QTY	DESCRIPTION
109519	1	1	VESSEL, SEPARATOR 16"2STG 740 MAWP
104324	2	7	FILTER ELEMENT, 3-1/2"x36", PECO FG-36-MS
103682	3	2	GAUGE, LEVEL, DANIEL 71RL, 1/2"NPT, STD.
103049	4	3	BALL VALVE, 1"NPT NUTRON
104552	5	2	VALVE, DUMP, 1"NPT MURPHY DV 850
104493	6	2	SWITCH, LEVEL, 1-1/2"NPT, B.S., MURPHY L1100
INCL.	7	5	TYPE J THERMOCOUPLES
INCL.	9	1	LOUVRE ACTUATOR (GARZO 501-12-3-15)
INCL.	15	1	BALL VALVE, WATTS 1 1/2" 7451-02-SS SW
108016	17	4	VALVE, NEEDLE, CENTURY 3/4x1/2"
104502	18	2	SWITCH, LEVEL, 2"NPT, MURPHY L1200
104068	19	1	CONTROLLER, TEMP, KIMRAY HT-18
104071	20	1	THERMOWELL, HTC, KIMRAY 1" SS-18SS
NEW	25	4	SPACER PLATE 1/8" CS 2 1/2"-600# FULL BORE
104248	26	1	SUCTION SCREEN, 4"-300#
NEW	27	1	CYLINDER, ARIEL, 3-7/8" JG 1270 PSIG C/W WCP
NEW	28	1	CYLINDER, ARIEL, 3-7/8" JG 1270 PSIG C/W WCP
104302	29	1	MERCER 9100 1"x1"NPT 'D' ORIF. SET@1270 PSIG
112943	30	1	MERCER 9100 1"x1"NPT 'D' ORIF. SET@1270 PSIG
-	-	-	-
104882	51	1	SUCTION CONTROL VALVE, FISHER V200 2"-600#RF
104302	53	1	THERMAL PSV MERCER 9100 SET@707 PSIG 'D' ORIF
104828	55	1	FISHER 357 CONTROL VALVE, 1" NPT, 1/2" PORT

PSV REQUIRERS RESET TO 707 PSI TO ACCOMODATE VESSEL CHANGE BEFORE UNIT GOES INTO SERVICE



ISSUED FOR CONSTRUCTION  
NAME: J. JORDAN DATE: 12/03/12

OPT#	OPTIONS INCLUDED IN THIS DRAWING
205/6	AUTO BYPASS VALVE
211A	AUTO SUCTION VALVE
240	SUCTION RELIEF VALVE

**LEGEND**

— PROCESS PIPING  
— UTILITY PIPING  
--- TUBING - 316SS, ASTM A269  
--- NYLON 11 TUBING MEETING SAE J844 TYPE A OR B  
--- HOSE (PRE-LUBE OIL, DRAIN)  
--- ELECTRICAL SIGNAL

**TUBING COLOR CODE:**

-BK (BLACK): VENTS  
-BL (BLUE): ESD, FIRE LOOP SIGNAL  
-RD, # (RED): CONTROL VALVE, TAG #  
-OR (ORANGE): INSTRUMENT GAS...OVER 35 PSI  
-YL (YELLOW): ...BELOW 35 PSI  
-OR, START: ENGINE START GAS  
-YL, FUEL: ENGINE FUEL GAS  
-BK (BLACK): ENGINE OIL  
-BR (BROWN): COMPRESSOR OIL  
-GR/WH (GREEN): MANIFOLD  
-SS: STAINLESS STEEL TUBING

**NOTES:**

1. SITE INSTALLATION AND START UP MINIMUM REQUIREMENTS PER B1B SPECS 905-1 TO 905-7 MUST BE FOLLOWED.  
2. WARRANTY ON CUSTOMER REQUESTED SPECIAL OPTIONS (CODE 777) IS LIMITED TO MATERIAL AND WORKMANSHIP.

DRAWING NO	REFERENCE DRAWINGS	REV	REVISION DESCRIPTION	BY	DATE	CHKD	APPD	ENGINEER'S STAMP	ENGINEERING RECORD
		I	1S2 PIPE SCHEDULE CHANGED TO STD. (IFC)	LJ	11/26/12	OM			DRAWN BY GRTAYLARAN
		H	AS PER SCOPE OF SUPPLY (IFC)	LJ	11/21/12	OM			DATE 1998-08-19
		G	AS BUILT PER CS095025 SCOPE OF SUPPLY	DS	2008-06-22	JKP			CHKD BY
		F	UPDATED DRAWING	JTH	2007-09-27				ENGINEER ANWAR BASHIR
		E	AS BUILT	JRB	2006-06-29				SHEET 1 of 6
		D	AS BUILT	WAT	2001-11-26	MH			APPD
		C	PRELIMINARY FOR COMPLETION	GRT	2001-11-15	MH			
		B	PRELIMINARY	WAT	2001-09-17	MH			

**ENERFLEX**

AREA/PROJECT -  
CONSULTANT -  
TITLE  
PROCESS FLOW SHEET  
B200 - 2STAGE

SCALE: NTS  
CONTR DWG NO: -  
DWG NO: PF-010201-D  
REV: 1