

DIMENSION TOLERANCES

THE DIMENSIONS SHOWN FOR LOCATION OF PROCESS/SERVICE CONNECTIONS ARE ±6mm UNLESS OTHERWISE NOTED.

NOTES:

1. ALL DIMENSIONS ARE IN mm UNLESS OTHERWISE NOTED.
2. NOZZLE LOCATIONS ARE SUBJECT TO COMPOUND TOLERANCES.
3. CUSTOMIZED OR MODIFIED UNITS MAY DIFFER FROM THIS DRAWING.
4. WARRANTY ON CUSTOMER REQUESTED SPECIAL OPTIONS (CODE 777) IS LIMITED TO MATERIAL AND WORKMANSHIP

B270LP FIELD CONNECTIONS

ITEM	CONNECTION	SIZE	RATING	DISTANCE FROM DATUM					
				X		Y		Z	
				mm.	in.	mm.	in.	mm.	in.
A	SUCTION	6"	300#RF	-91	-3 5/8	-292	-11 1/2	445	17 1/2
B	DISCHARGE	3"	300#RF	-91	-3 5/8	-3811	-150	445	17 1/2
C	UTILITY GAS INLET	1 1/2"	NPT	-91	-3 5/8	-3626	-142 3/4	437	17 1/4
D	COALESCER DRAIN	1 1/2"	NPT	-164	-6 1/2	-1798	-70 3/4	205	8

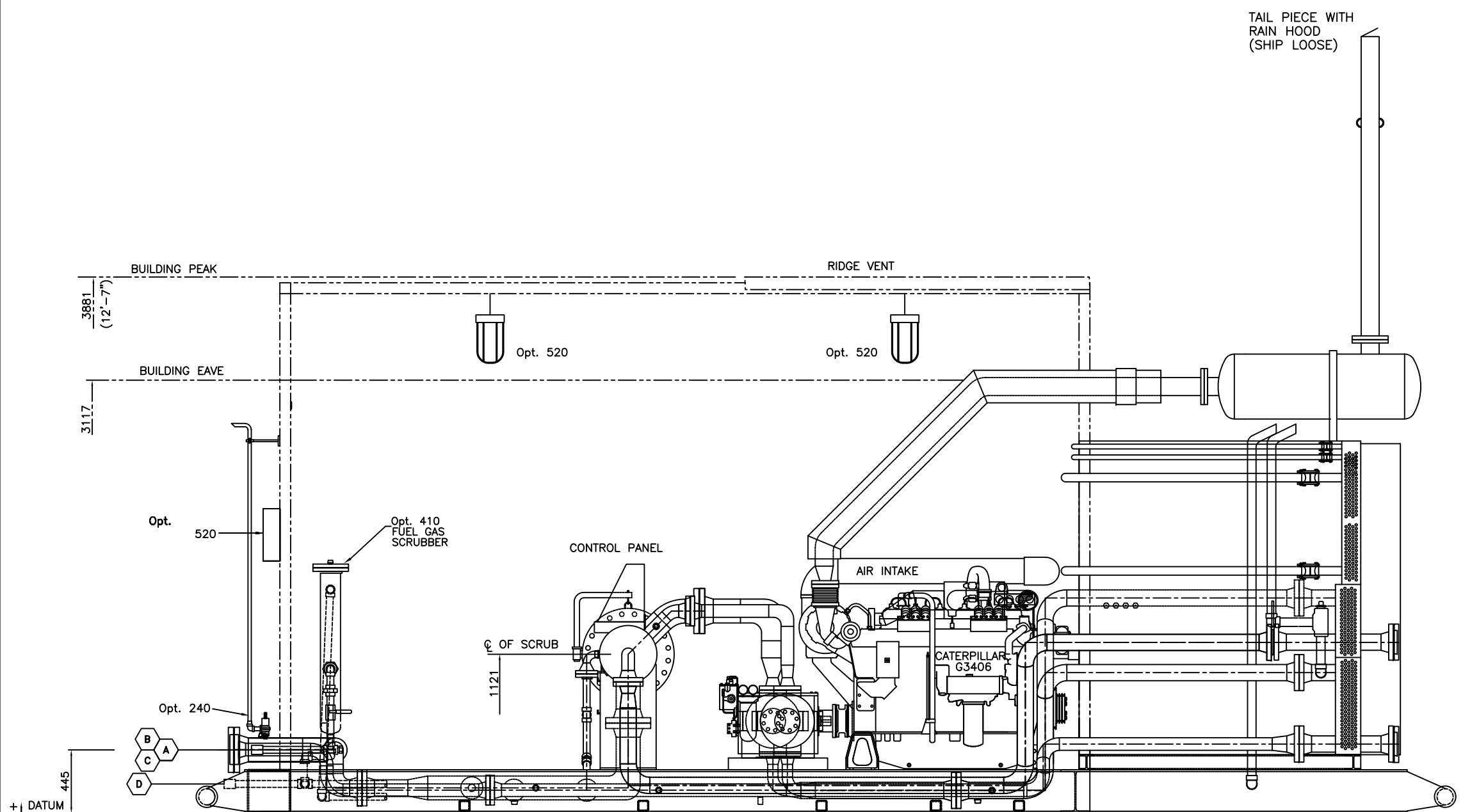
OPTIONS

OPT#	DESCRIPTION	OPT#	DESCRIPTION
205		501	
206		510	EXTRA ESD
210		523	ADDITIONAL HEATER
240	SUCTION RELIEF - THERMAL PORT	542	
245		605	
410	FUEL GAS SCRUBBER	606	
438		625	
445		671	
482		680	
484		685	
		691	

REV.	DESCRIPTION	DATE	BY
C	AS BUILT	1999 10.26	GRT
B	REVISED FOR CUSTOMER DRAWINGS	1999 10.04	GRT
A	NEW DRAWING (K:\LIB\PRODUCTS\A0026C)	1999 02.08	PB

ENERFLEX SYSTEMS LTD.
BTB Compressors

DATE	SCALE	TITLE	UNIT	DWG. NO.	SHEET	ISS.
99.02.08	1:35	GENERAL ARRANGEMENT (PLAN)	B270LP - 2 STAGE	9860-A0026	1 of 6	99.02.



ELEVATION VIEW

FIELD CONNECTIONS			
ITEM	CONNECTION	SIZE	RATING
A	SUCTION	6"	300#RF
B	DISCHARGE	3"	300#RF
C	UTILITY GAS INLET	1 1/2"	NPT
D	COALESCER DRAIN	1 1/2"	NPT

BUILDING OPTIONS	
OPT #	DESCRIPTION
520	12VDC BUILDING LIGHTS c/w CUSTOMER CONNECTION TO JUNCTION BOX
540	
541	

OPTIONS	
OPT #	DESCRIPTION
240	SUCTION RELIEF VALVE
335	
336	
340	
355	UTILITY GAS FILTER SEPARATOR/LVL GAUGE SHUTDWN
410	
414	
425	
426	
521	
522	
530	
532	

BUILDING SPECIFICATIONS:

SELF FRAMING METAL BUILDING 13'6" WIDE x 18'9" LONG x 9' WALL HEIGHT.
 ROOF SLOPE 4:12
 INTERIOR LINER: 24ga ALUMINUM
 EXTERIOR LINER: 22ga GALVANIZED STEEL
 INSULATION: WALLS/ROOF R12 FIBERGLASS, NO VAPOR BARRIER
 C/W (2) DOUBLE MAN DOORS, 6'x7', R4 INSULATED STEEL, WITH WINDOW, PANIC BARS AND CHECK CHAINS.

(2) DOUBLE GLAZED SLIDING WINDOWS, 40"x40" WITH SCREENS
 (3) WALL VENTS, 12"x12" WITH SLIDERS AND SCREENS.
 (1) RIDGE VENT, 6"x108", CHAIN ADJUSTABLE, WITH SCREEN.

NOTES:

1) ALL DIMENSIONS ARE IN mm UNLESS OTHERWISE NOTED.
 2) OVERALL AND MINIMUM DIMENSIONS TO BE OBSERVED, ALL OTHERS MAY BE MODIFIED TO ACCOMMODATE FRAMING.
 3) WARRANTY ON CUSTOMER REQUESTED SPECIAL OPTIONS (CODE 777) IS LIMITED TO MATERIAL AND WORKMANSHIP

REV.	DESCRIPTION	DATE	BY
C	AS BUILT	1999 10.26	GRT
B	REVISED FOR CUSTOMER DRAWINGS	1999 10.04	GRT
A	NEW DRAWING (K:\LIB\PRODUCTS\A0026C)	1999 02.08	PB

ENERFLEX SYSTEMS LTD. **BTB Compressors**

DATE	SCALE	TITLE	GENERAL ARRANGEMENT (ELEVATION)
99.02.08	1:35		
CHK'D	APP'D	UNIT	B270LP 2STAGE
DRAWN RT	SYSTEM ACT	DWG. NO.	9860-A0026
FILE: GA9860B.DWG		SHEET	2 of 6
		ISS.	99.02.

16" BTB COALESCER
16" Ø NOM.
WITH FILTER ELEMENTS (7)
740 PSIG MAWP @100°F

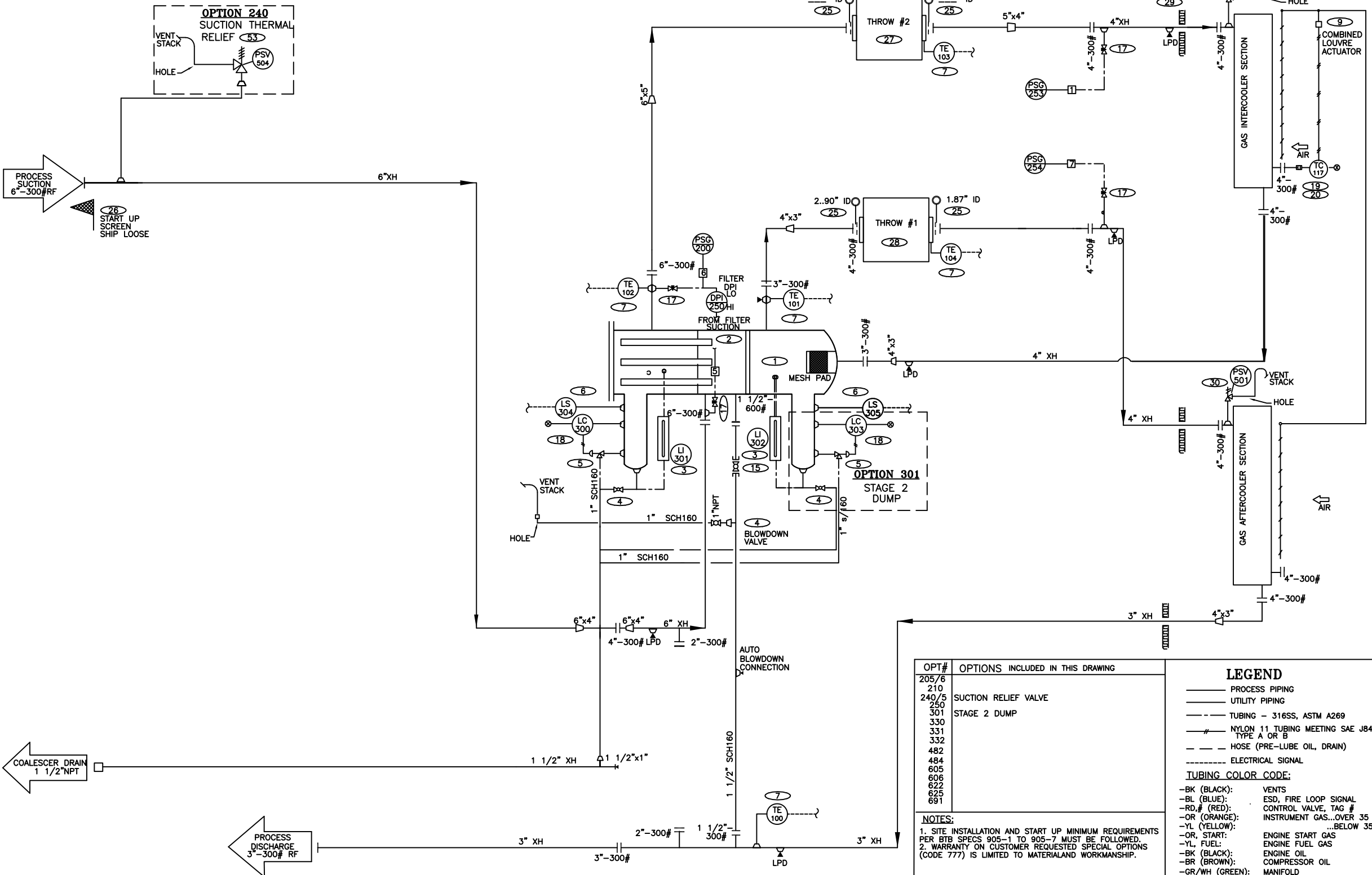
ARIEL CYLINDERS
THROW #1 13 1/2" JG 115 PSIG MAWP
THROW #2 7 1/2" JG 600 PSIG MAWP

PSV
PSV-500 SET@115
PSV-501 SET@600

AXC 72 AVI COOLER
IC SECTION: 655 MAWP @300°F
AC SECTION: 655 MAWP @300°F

PSV OPTION 240
PSV-504 SET@115

OPTION 240
SUCTION THERMAL RELIEF
PSV 504



MATERIAL LIST

PART	ITEM	QTY	DESCRIPTION
C0552	1	1	FILTER/COALESCER, 16" BTB
C2092	2	7	FILTER ELEMENT, PECO FG-36-MS
C1689	3	2	LEVEL GAUGE, PENBERTHY 1RM 7
C0484	4	3	BALL VALVE, 1"NPT WKM B136-CS-02-CS
C0313	5	2	DUMP VALVE, 1"NPT MURPHY DV 1500
C0315	6	2	LEVEL SWITCH, MURPHY 1 1/2" L1100
	7	5	TYPE J THERMOCOUPLES
	9	1	LOUVRE ACTUATOR (GARZO 501-12-3-15)
	14		
	15	1	BALL VALVE, WATTS 1 1/2" 7451-02-SS SW
	16		
C0522	17	4	NEEDLE VALVE, CENTURY 3/4"x1/2"
C0316	18	2	LEVEL CONTROLLER, 2"NPT MURPHY L1200NDVO
C2533	19	1	TEMPERATURE CONTROLLER, KIMRAY HT-18
C2532	20	1	KIMRAY 1" SS-18SS THERMOWELL
	25		ORIFICE GASKETS, AS NOTED (316SS)
	26	1	SUCTION SCREEN, 6"-300#
	27	1	CYLINDER, ARIEL C/W WCP
	28	1	CYLINDER ARIEL C/W WCP
	29	1	PSV, SET @115
	30	1	PSV, SET @600
	31		
	32		
C1046	33	1	SPEC BLIND 4"-400#
	53	1	THERMAL PSV, TAYLOR 1"x1" SET@115 Psig

REV.	DESCRIPTION	DATE	BY
E	AS BUILT	1999 10.26	GRT
D	REVISED FOR CUSTOMER DRAWING	1999 10.05	GRT
C	1999 MODEL UPDATE	1998 10.13	SP
B	UPDATED PER SHOP MARKUPS AND FOR GENERAL ISSUE.	1998 04.08	KLS
A	NEW DRAWING	1997 07.15	KLS

EFX BTB Compressors
ENERFLEX SYSTEMS LTD.

DATE	SCALE	TITLE
97.07.15	NTS	PROCESS FLOW SHEET
CHRT'D	APP'D	UNIT
		B270LP-2 STAGE
DRAWN	SYSTEM	DWG. NO.
KLS	ACAD13	9860-A0026
FILE: PF9860E.DWG		SHEET
		3 of 6
		ISS.
		98.10

OPT# OPTIONS INCLUDED IN THIS DRAWING

205/6	
210	
240/5	SUCTION RELIEF VALVE
250	
301	STAGE 2 DUMP
330	
331	
332	
482	
484	
605	
606	
622	
625	
691	

LEGEND

— PROCESS PIPING
 - - - UTILITY PIPING
 - - - TUBING - 316SS, ASTM A269
 - - - NYLON 11 TUBING MEETING SAE J844 TYPE A OR B
 - - - HOSE (PRE-LUBE OIL, DRAIN)
 - - - ELECTRICAL SIGNAL

TUBING COLOR CODE:

-BK (BLACK): VENTS
 -BL (BLUE): ESD, FIRE LOOP SIGNAL
 -RD, # (RED): CONTROL VALVE, TAG #
 -OR (ORANGE): INSTRUMENT GAS...OVER 35 PSI
 -YL (YELLOW): ...BELOW 35 PSI
 -OR, START: ENGINE START GAS
 -YL, FUEL: ENGINE FUEL GAS
 -BK (BLACK): ENGINE OIL
 -BR (BROWN): COMPRESSOR OIL
 -GR/WH (GREEN): MANIFOLD
 -SS: STAINLESS STEEL TUBING

NOTES:

1. SITE INSTALLATION AND START UP MINIMUM REQUIREMENTS PER BTB SPECS 905-1 TO 905-7 MUST BE FOLLOWED.
 2. WARRANTY ON CUSTOMER REQUESTED SPECIAL OPTIONS (CODE 777) IS LIMITED TO MATERIAL AND WORKMANSHIP.