

cust Code

~~170484~~
170484

Issue Date: _____

C-96-J-94-H-01

5900 - 112th Ave S.E.
Calgary, AB
T2C-4Z1
Tel: 403-235-5877
Fax: 403-272-7749

#100 1132 88 Ave
Grande Prairie, AB
T8V-0P6
Tel: 780-513-0313
Fax: 780-513-0804



Medicine Hat, AB
Tel: 403-235-5877

#1 - 705 - Cambois Trail
Stevie Lake, AB
T0G-2A0
Tel: 780-849-9309
Fax: 780-849-9310

RECOMMENDED SPARE PARTS LIST

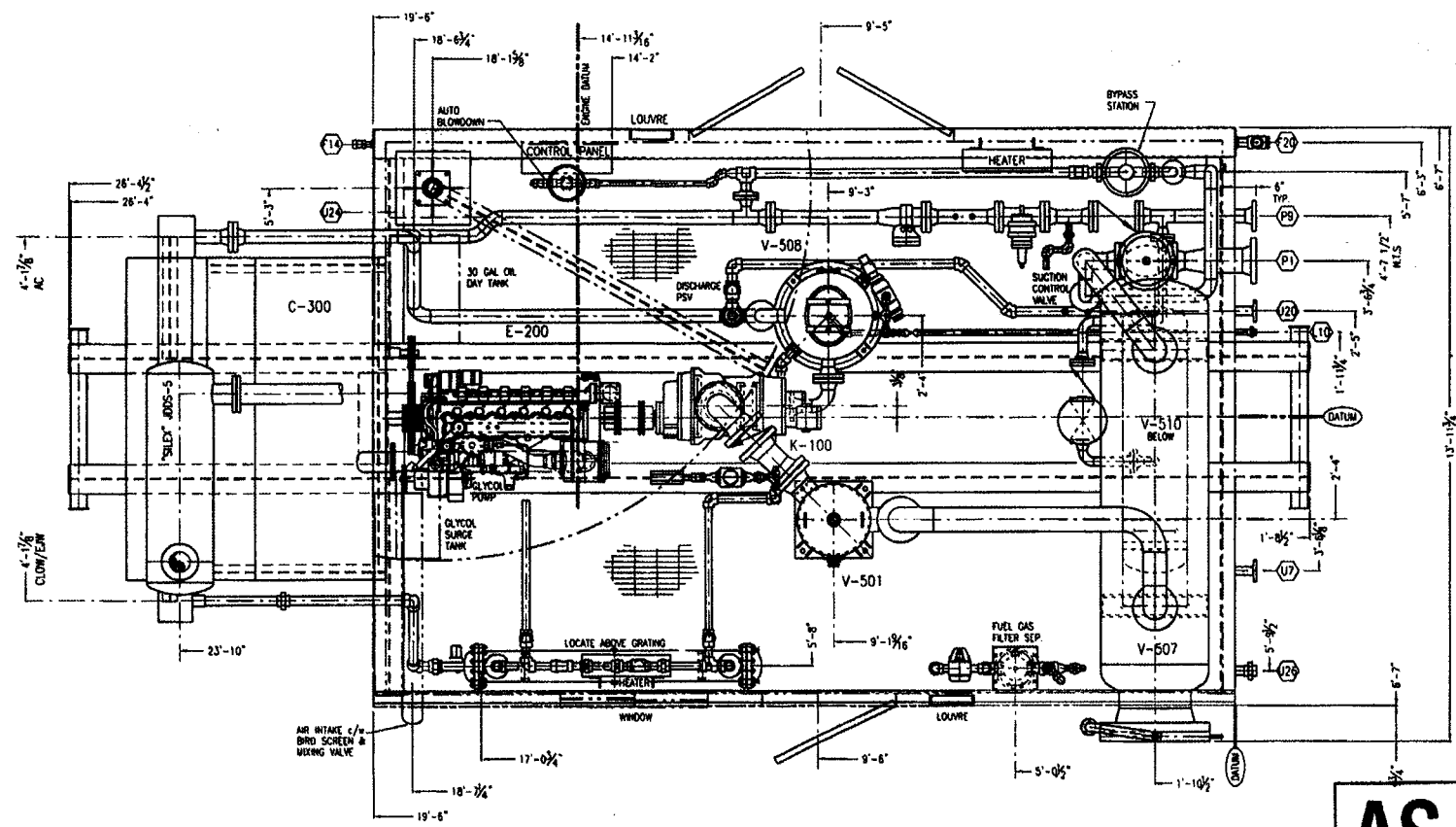
UNIT NUMBER	BE-04-303	SERIAL NUMBER
ENGINE	CATERPILLAR 3306NA ARRANGEMENT # 102-9435	07Y09165
COMPRESSOR	SULLAIR PDR20X-3.0-1.18 / P/N 02250124-796	006-04012827
COOLER	ACE J3A-67-8	426901

Ord	Qty	Part Number	Description	Unit Cost	Ext. Cost
ENGINE SPARE PARTS					
	12	CHA-RTN-79G	Spark Plugs		
	2	ALT-591-011A	Ignition Coils		
	1	CAT-102-9388	Primary Air Filter Element		
	1	CAT-102-9387	Secondary Air Filter Element		
	6	CAT-1R-0716	Oil Filter Element, Engine		
	2	CAT-1331247	Valve Cover Gaskets		
	1	T312-60017-02R	Starter, TDI Turbostart		
	1	GSK-00J	Gasket, 8" 150#, Fuel Filter		
	1	BEP-FG-24	Element, Fuel Filter		
	1	BOS-NGEO PL 40	Oil, 205 Litre Drum		
	2	BLT-B101	Belts, Engine to Cooler		
COMPRESSOR SPARE PARTS					
	6	BEP-9604-13	Oil Filter Element, Compressor		
	1	FP1560P-150	Element, Thermostatic Control Valve, 150°F		
	1	FP1571	Lip Seal, Thermostatic Control Valve		
	1	FP1572V	Viton O-Ring, Thermostatic Controls Valve		
	1	SUL-241775	Oil Pressure Relief Valve, Compressor		
	1	SUL-224151	Oil Pressure Relief Valve Body, Compressor		
	1	BOS-GPGS-150	Oil, 205 Litre Drum		
	1	COL-800YTS-3/4-100	Element, 3/4" Y-Strainer		
	1	COL-800YTS-2-100	Element, 2" Y-Strainer		
PROCESS & MISC. SPARE PARTS					
	1	10K16	Mechanical Seal, Water Pump (Goulds)		
	1	5K164	Lip Seal, Water Pump		
	1	5K205	O-ring, Water Pump		
	1	BLT-B087	Belt, Goulds Pump		
	1	GSK-406964VIT	Gasket, Elliptical, Lube Oil Separator		
	1	BEP-044306-G	Element, Lube Oil Separator		

Please note: All pricing will be honored for 30 days from issue date.
Please contact your nearest Bidell Equipment branch to order parts.

C-96-J

THIS DRAWING IS SOLE PROPERTY OF BIDELL EQUIPMENT INC. AND SHALL NOT BE REPRODUCED, COPIED, LENT, ALTERED NOR USED FOR ANY PURPOSE OTHER THAN WHICH IT IS FURNISHED EXCEPT WITH THE WRITTEN PERMISSION OF BIDELL EQUIPMENT INC.



NO.	SIZE & RATING	SYMBOL / DESCRIPTION
F14	1" - NPT	WASTE OIL TANK VENT
F20	2" - NPT	OIL WASTE TANK PUMP-OUT
F28	1 1/2" - NPT	FUEL/START GAS SUPPLY
V	2" - NPT	STARTER EXHAUST
C	1" - NPT	OIL SEPARATOR DRAIN
U7	2" - NPT	SCRUBBER DRAIN HEADER
U20	2" - NPT	FLARE HEADER
P9	3" - 300#RF	FINAL DISCHARGE
P1	6" - 300#RF	STAGE 1 BLET
AG		SPRINGS / DESCRIPTION

TOTAL PACKAGE WEIGHT = APPROX 38,000 lb
 TOTAL PACKAGE LENGTH = 28'-1"
 TOTAL PACKAGE WIDTH (Incl. Eaves) = 14'-4"
 PACKAGE SHIPPING HEIGHT = 14'-5"

REV	DATE	BY	APPR	DESCRIPTION
C	05-01-20	CP	HF	AS BUILT
B	04-12-07	AMP	HF	REVISED UPSTREAM LENGTH OF DISCHARGE GAS METER RUN
A	04-11-27	AMP	HF	ISSUED FOR CONSTRUCTION
D	04-11-04	AMP	HF	ISSUED FOR APPROVAL

AS BUILT

SIGNED: DATE: **JAN 20 2005**

BIDELL EQUIPMENT INC.

GAS COMPRESSION

GENERAL ARRANGEMENT - PLAN VIEW

CUSTOMER: PIONEER NATURAL RESOURCES CANADA INC / CONDISE DESIGN PROJECT
 LOCATION: CHIMCHANA 4-91-A COMPRESSOR
 LSN: 0-91-A / 94-H-7

JOB# 04-303

DWN DATE SCALE DWG# REV
 AMP 04-11-03 3/8" = 1'-0" 04-303-100A REV C

SCHEDULE OF OPENINGS