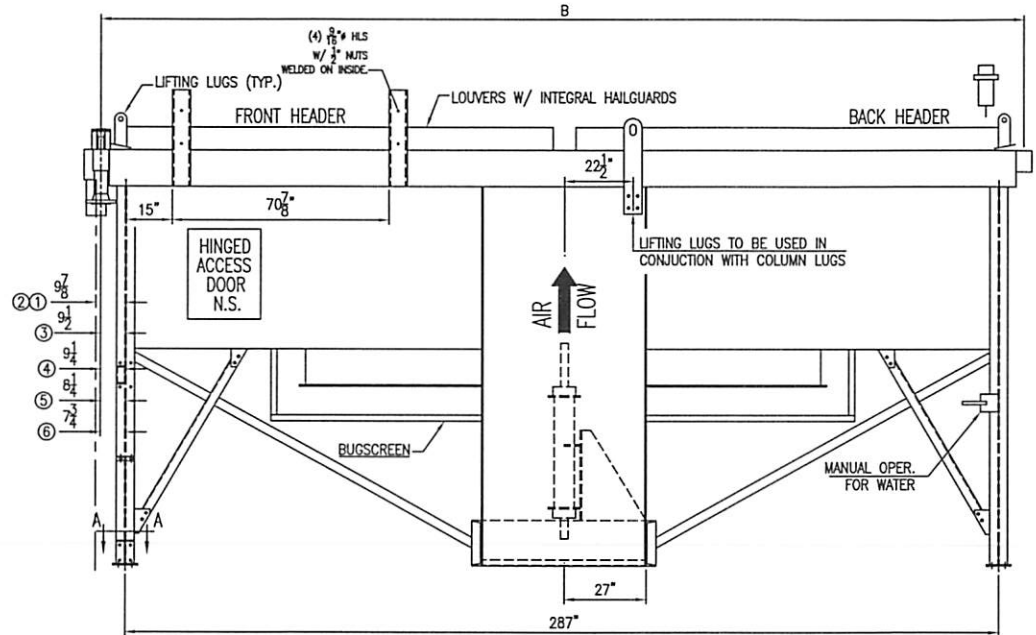
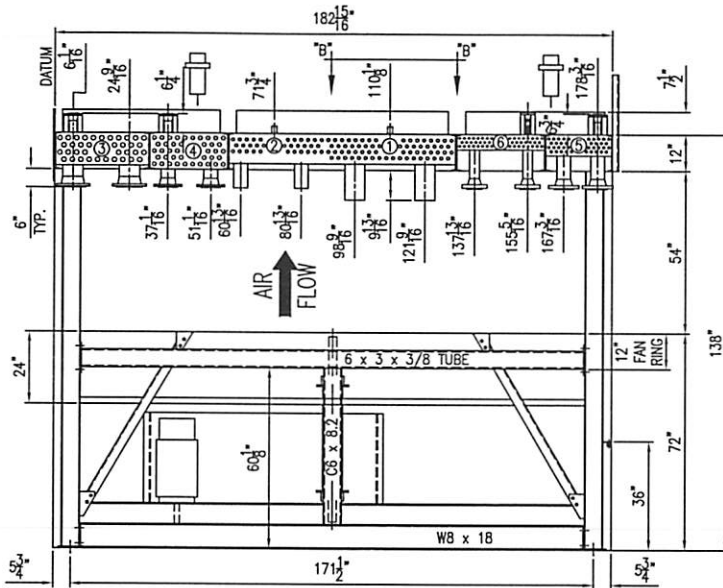
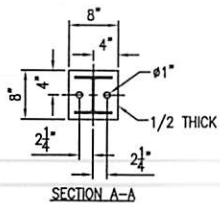


ITEM	SERVICE	MAWP	CODE	NOZZLES		COUPLING	REF. DIMENSION			LOUVERS	BUG SCREEN	DRIVE	FAN	FINISH
				INLET	OUTLET		TEMP	B	C					
1	EJW (COMBINED) 81 GALS	14 PSI @ 300/-20°F	NONE	6 PIPE STUB	6 PIPE STUB	1-3000#	306.75	-	-	MANUAL	YES (HARD PANELS)	ELECTRIC MOTOR DRIVE SHEAVES, BELTS, AND GUARDS BY AIR-X-HEMPHILL 60 HP, 1800 RPM, 3P, 60 HZ, 460V, TEFC, VFD, CSA ELECTRIC MOTOR	168# MOORE 10K, 60 VT 10-BLADE 11.5" PA, LH ROTATION 220 RPM @ 45.3 HP REQ'D	STRUCTURE STD. PRIMER W/ WARM GRAY ENAMEL TOP COAT
2	AUX-W (COMBINED) 49.5 GALS	14 PSI @ 300/-20°F	NONE	4 PIPE STUB	4 PIPE STUB	1-3000#	306.75	-						
3	IC-1	215 PSI @ 350/-20°F	ASME	6-150# RFWN	6-150# RFWN	2-150# RFWN	306.00	-						
4	IC-2	215 PSI @ 350/-20°F	ASME	4-150# RFWN	4-150# RFWN	2-150# RFWN	305.50	-						
5	IC-3	645 PSI @ 350/-20°F	ASME	4-300# RFWN	4-300# RFWN	1.5-300# RFWN	303.50	-						
6	AC	1292 PSI @ 350/-20°F	ASME	3-600# RFWN	3-600# RFWN	1-600# RFWN	302.50	-						



FAN  
ROTATION  
←

RELEASED  
FABRICATION OF THIS  
ORDER HAS BEGUN



REV	REVISION DESCRIPTION	BY	CK	APP	DATE	FOR: ENERFLEX SYSTEMS	ESTIMATED DRY WEIGHT # 27,800
						P.O. NO: 0640327	
						TAG NUM: 060787 QUICKSILVER	
						USER: QUICKSILVER RES. (CBM STOCK-7042GL-JOK-4)	CERTIFIED DRAWING FOR:
						JOB SITE: AB, CANADA	MODEL 168 ZF QUANTITY: 1
						JOB NO: 64487	DWG. NO. 64487-CRT
						WORK ORDER NO: -	SCALE: FULL
						DR: MJ DATE: 9/1/06	DATE: 9/1/06
						CK: M.B. DATE: 9/8/06	REV 0