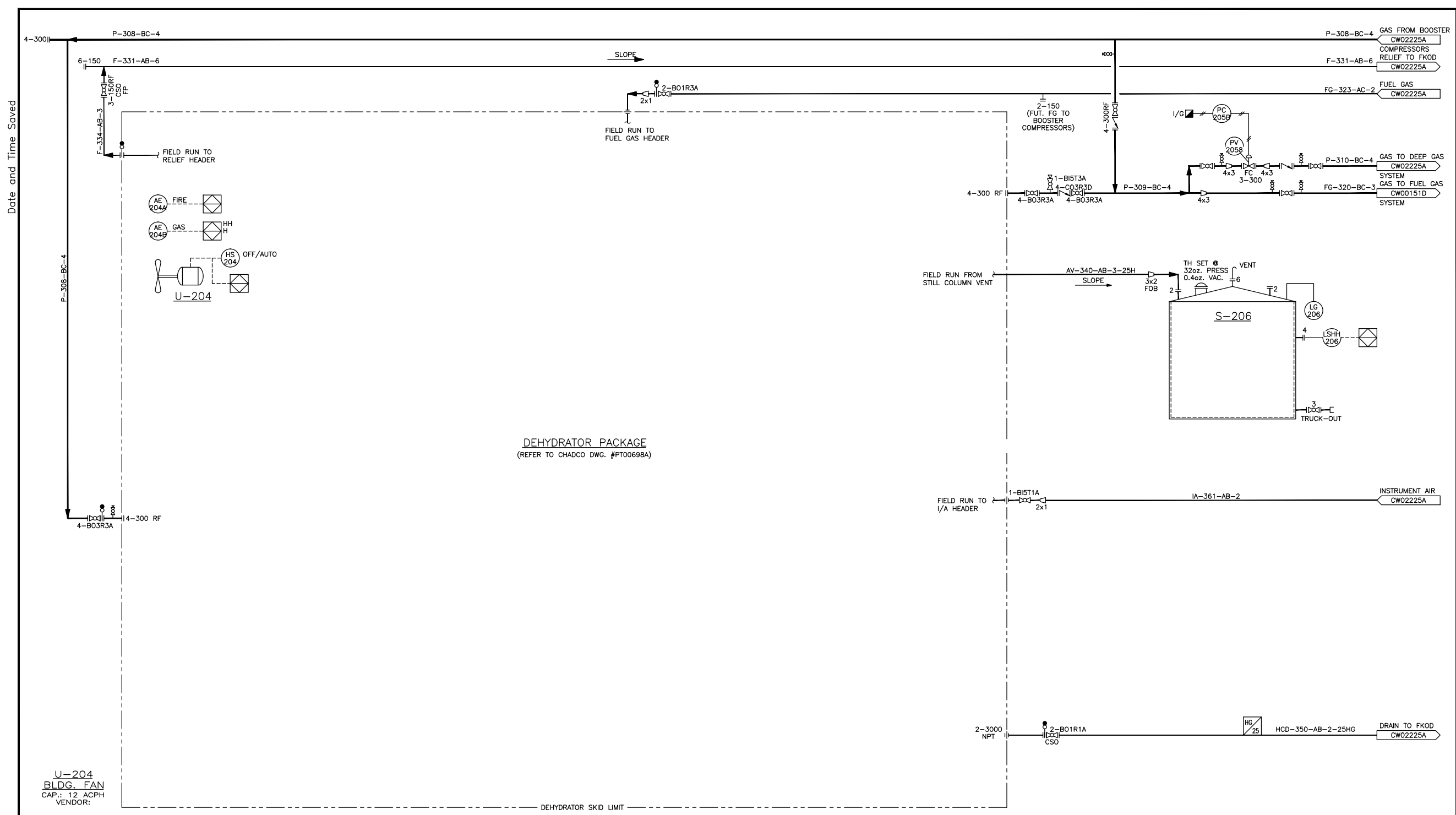


Date and Time Saved

CADD DWG - DO NOT MANUALLY CHANGE



DEHYDRATOR PACKAGE
(REFER TO CHADCO DWG. #PT00698A)

- V-203**
INLET SEPARATOR
SIZE: 610mm O.D. x 2438mm S/S
DP/DT: 9936 kPag @ 25°C
- V-204**
GLYCOL CONTACTOR
SIZE: 610mm O.D. x 7468mm S/S
DP/DT: 9929 kPag @ 38°C
- P-204**
GLYCOL PUMP
MANUF.:
MODEL:
CAP.:
DP/DT:
- E-204**
AIR/GLYCOL EXCH.
MANUF.:
MODEL:
SIZE: 32mm FINTUBE x 4572mm LG
DUTY:
- V-205**
FUEL GAS SCRUBBER
SIZE: 152mm OD x 914mm LG
DP/DT: 1965kPag @ 38°C
- H-204**
GLYCOL RECONCENTRATOR
MANUF.:
DUTY: 275000 BTU/HR
DP/DT:
- F-204**
GLYCOL FILTER
MANUF.: CUNO 1B1
SIZE: 300mm
ELEMENT: 25 MICRON
- E-205**
GAS/GLYCOL EXCHANGER
MANUF.:
MODEL:
SIZE: 152mm OD x 3048mm S/S
DUTY:
- S-206**
STILL COLUMN
DRAIN TANK
SIZE: 3060mm OD x 3128mm HT
CAP.: 100 BBL
DP: 32oz
VENDOR: ULTRA FAB
- U-206**
CATALYTIC HEATER
MANUF.: CISCAN
MODEL:
DUTY: 24000 BTU/HR

CAUTION : READ BEFORE EXCAVATION

NOT WITHSTANDING INFORMATION PROVIDED BY PANCANADIAN PETROLEUM LIMITED IN ANY FORM, THE CONTRACTOR SHALL UTILIZE ELECTRIC LOCATING EQUIPMENT TO LOCATE UNDERGROUND PIPING AND ELECTRICAL WIRING ETC., PRIOR TO HAND EXCAVATION.

ONCE ALL UNDERGROUND FACILITIES HAVE BEEN HAND EXCAVATED THE CONTRACTOR SHALL RECHECK, WITH ELECTRONIC LOCATING EQUIPMENT, THE ENTIRE WORK AREA TO BE MECHANICALLY EXCAVATED TO ENSURE THAT NO FACILITIES HAVE BEEN MISSED.

REFERENCE DRAWINGS	DWG. NO.	NO.	PROJECT DESCRIPTION	PROJ.	AFE	EPCM Co.	EPCM No.	ENG.
		A	CONCEPTUAL	263200	-	TARTAN	-	-
		1	PRELIMINARY DESIGN & CLIENT REVIEW	263200	-	TARTAN	-	-
		2	ISSUED FOR CONSTRUCTION	263200	-	TARTAN	-	-
		3	AS-BUILT	263200	-	TARTAN	-	-

ISSUE STAGE	DATE	BY	CHKD.	APPD.	PERMIT STAMP	ENGINEER'S STAMP
Prelim.	-	-	-	-		
Bld	-	-	-	-		
Constr.	01.01.18	CG	-	-		
As-built	01.06.12	ER	-	-		

PanCanadian

PROJECT: HUSSAR CROWFOOT RE-CONSTRUCTION

SCALE: NTS (A1 Size)

LOC: 14-01-024-22 W4M

EPCMC: TARTAN ENGINEERING LTD. EPCMNO: A1-2632-B-100

FACILITY: GAS PLANT

TITLE: PIPING AND INSTRUMENTATION DIAGRAM FUEL GAS DEHYDRATION

AREA: CROWFOOT CLASS: A FILE NO.: CW02224A