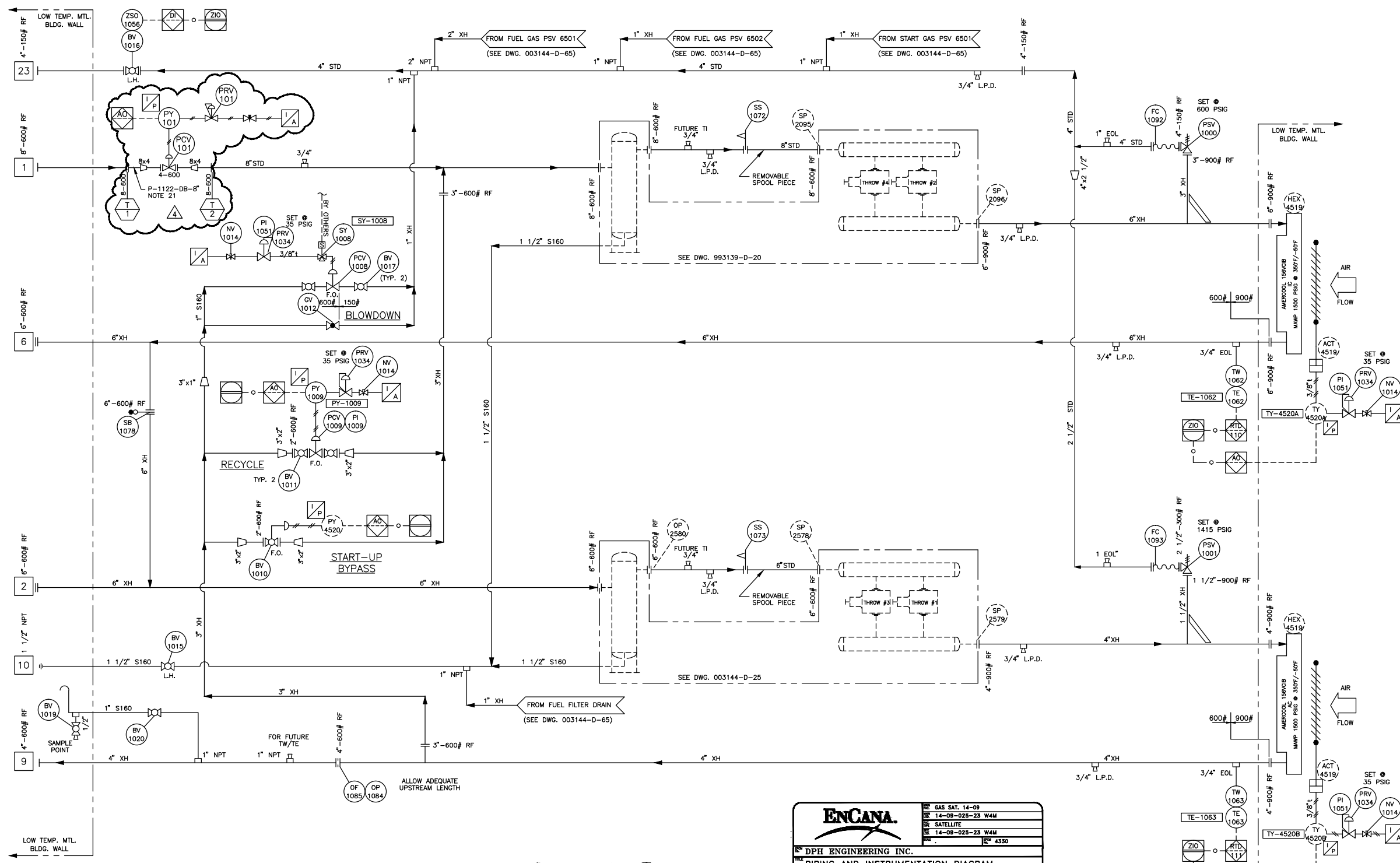


Plot date: 16:16 Nov. 09, 2000

Path: \\NA\W0\003144\ASBULL\A\003143-10.dwg
 November 27, 2001 8:20:17 a.m.
 Drawing: Q:\PCF\JOBS\4330\VENOR\WEATHERFORD\RK00834A.DWG



21. MAMP OF ENCAN A 'DB' 600 ANSI SPECIFICATION IS DE-RATED TO 7140 kPa(g).

ENCANA
 GAS SAT. 14-09
 14-09-025-23 W4M
 SATELLITE
 14-09-025-23 W4M
 4330

DPH ENGINEERING INC.
 PIPING AND INSTRUMENTATION DIAGRAM
 COMPRESSOR PACKAGE (Q-102)

ROCKYFORD L RK00834A

THIS DRAWING REPRESENTS PROPRIETARY INFORMATION AND SHOULD NOT BE DISTRIBUTED OR MODIFIED IN ANY MANNER THAT IS NOT IN THE BEST INTEREST OF ENCAN A OR THE ORIGINAL AUTHOR.

BILL OF MATERIAL

NOTE: ITEM No. = FIRST TWO DIGITS (Work Center), LAST TWO DIGITS (item No.)

| ITEM | PART NO. | TOTAL QUANTITY | DESCRIPTION | REV |
|------|----------|----------------|---|-----|
| 1000 | 813-3378 | 1.00 EA | VALVE,RELIEF,CROSSBY,JOS-55/A, 3"-900#RF x 4"-150#RF,NACE II CS,316SS TRIM,X750,J ORIFICE *TEST REPORTS MUST BE SUPPLIED WITH VALVE UPON SHIPMENT. | |
| 1001 | 812-9519 | 1.00 EA | VALVE,RELIEF,CONSOL,19146c, SET @ 600 PSIG 1.50"-900#RF x 2.50"-300#RF C.S. BODY & SPRING *TEST REPORTS MUST BE SUPPLIED WITH VALVE UPON SHIPMENT. | |
| 1008 | 813-3231 | 1.00 EA | VALVE,CONTROL,FISHER,357-8111, 1"NPT,WCC STEEL BODY,NACE 3/4" 17-4PH SST MICRO-FORM TRIM,TFE PACKING, SIZE 40 ACTUATOR,FAIL OPEN 0-35 PSI INPUT SIGNAL C/W ACTUATOR MOUNTED SOLENOID | |
| 1009 | 813-5766 | 1.00 EA | VALVE,CONTROL,FISHER,657-ET40, E#457 TRIM,PORT 2.3125" DIA., SIZE 40 ACTUATOR,FAIL OPEN C/W FISHER FIELDWIRE DVC5010HC DIGITAL VALVE POSITIONER, 4-20MA LOOP POWERED ELECT,CSA XP CLASS 1,DIV II,GROUPS B,C,& D,FISHER 67AF-209 REG,316SS, TUBING SWAGELOK FITTINGS | |
| 1010 | 813-5772 | 1.00 EA | VALVE,BALL,2"-600,RF,NUTRON, F.P. PORT,MODEL#13-F20R06B,C/W FISHER ACTUATOR 1052K-60-13, FISHER MOUNT'G KIT MTG-ROT-207 316SS TUBING & SWAGELOK FITTINGS | |
| 1011 | 803-8506 | 2.00 EA | VALVE,BALL,2"-600,RF,NUTRON, R.P. PORT,MODEL# 13-R20R06B | |
| 1012 | 800-8352 | 1.00 EA | VALVE,GLOBE,SCR,1-9/1500,CRANE R.P. PORT,MODEL# B-3844XU-T | |
| 1014 | 804-2458 | 4.00 EA | VALVE,NEEDLE,CM2-3-M2ZT-B-V,* CENTURY,0.25" MAX CS,6000PSI | |
| 1015 | 803-1053 | 1.00 EA | VALVE,BALL,SCR,1.5"-1500,APOLLO+ R.P. PORT,MODEL# 89-107-27,HL | |
| 1016 | 812-9835 | 1.00 EA | VALVE,BALL,4"-150,RF,NUTRON, F.P. PORT,MODEL# B3-F40R01SL,HL | |
| 1017 | 800-7583 | 2.00 EA | VALVE,BALL,SCR,1"-2250,WIKA, R.P. PORT,#1R-B136-CS-02CS,HL | |
| 1019 | 800-7153 | 1.00 EA | VALVE,BALL,SCR,0.5"-2000,APOLLO+ F.P. PORT,MODEL# 89-103-27,HL | |
| 1020 | 803-9843 | 1.00 EA | VALVE,BALL,SCR,1"-2000,APOLLO+ R.P. PORT,MODEL# 89-105-27,HL | |
| 1034 | 803-0105 | 4.00 EA | REGULATOR,FISHER,870FR-362,* 1/4"NPT,5-35 PSI RANGE | |
| 1051 | 803-2633 | 3.00 EA | GAUGE,PRESS,2.5,0-60PSI,WIKA,* PANEL MOUNT,DUAL SCALE,L.F. MODEL# 233.53 | |
| 1056 | 807-4978 | 1.00 EA | SWITCH,PROX,MAGNUM,SILV,BULLET MODEL 316,SS,EX/5/8"-18UNF-2A | |
| 1062 | 813-5781 | 1.00 EA | RTD,ALLTEMP,A71133, AI-7113-2-14-3-UT-120-7 AQ-34-4-5.5-R/RL | |
| 1063 | 813-5805 | 1.00 EA | RTD,ALLTEMP,A71133, AI-7113-2-14-3-UT-120-6 AQ-34-2.5-4-R/RL | |
| 1072 | 801-0027 | 1.00 EA | SCREEN,SUCTION,CS,8"-600,150%, RF,CONE,STD,1/2" XH PIPE | |
| 1073 | 800-8957 | 1.00 EA | SCREEN,SUCTION,CS,6"-600,150%, RF,CONE,STD,1/2" XH PIPE | |
| 1078 | 803-9251 | 1.00 EA | BLIND,SPECTACLE,6"-600,RF, 0.875 THK,SAS16-70N | |
| 1084 | 813-5823 | 1.00 EA | PLATE,ORIFICE,4"-600,RF, 0.125" THK,FULL BORE,C.S., PHONO FINISH | |
| 1085 | 812-9528 | 1.00 EA | FLANGE,ORIFICE,RFWN,4"-600,XH, SALON,PURCHASED IN PAIRS HARDWARE NOT INCLUDED | |
| 1092 | 812-0032 | 1.00 EA | HOSE,BRAID,4"-150RFX12" LG,SS, 275 PSI MWP,70F MWT | |
| 1093 | 803-8774 | 1.00 EA | HOSE,BRAID,2.5"-300RFX12" LG,SS, 275 PSI MWP,70F MWT. | |

CUSTOMER CONNECTIONS

| TAG | DESCRIPTION | SIZE | TAG | DESCRIPTION | SIZE |
|-----|-----------------------|-------------|-----|-------------|------|
| 1 | STAGE ONE INLET | 6"-600# RF | | | |
| 2 | STAGE TWO INLET | 6"-600# RF | | | |
| 6 | STAGE ONE DISCHARGE | 6"-600# RF | | | |
| 9 | FINAL DISCHARGE | 4"-600# RF | | | |
| 10 | SCRUBBER DRAIN HEADER | 1 1/2" NPTF | | | |
| 23 | PSV HEADER | 4"-150# RF | | | |

GENERAL NOTES

- PROCESS INSTRUMENT LINES: 316SS TUBING c/w 3/8" SWAGELOK FITTINGS & 316SS FERRULES.
- UTILITY INSTRUMENT LINES: 316SS TUBING c/w 3/8" SWAGELOK FITTINGS & 316SS FERRULES.
- INSTRUMENT MEDIUM: CLEAN, DRY AIR
- ALL PIPING 2" AND UNDER TO BE XH MINIMUM.
- ALL PROCESS FITTINGS TO BE 6000# RATING UNLESS OTHERWISE NOTED.
- CORROSION ALLOWANCE: 1/16"
- AREA CLASSIFICATION: CLASS 1, DIV. 2
- CONDUIT TYPE: ALUMINUM
- INSTRUMENT TAGS REQUIRED: YES NO
- PRIMER (1) COAT: 1-2 MIL AMERLOCK 400 HIGH-SOLIDS EPOXY COATING
- PAINT (1) COAT: 4-5 MIL FINAL THK. AMERLOCK 400 HIGH-SOLIDS EPOXY COATING COLOUR: PANCANADIAN TAUPE
- PWHT TO BE PERFORMED ON ALL PROCESS VESSELS AND PROCESS PIPING.
- ALL OUTDOOR EXPOSED MATERIALS (PROCESS) TO BE -50°F DESIGN.
- ALL PROCESS PIPING GASKETS TO BE 316SS.
- ALL PROCESS PIPING AND VESSELS TO BE 100% RADIOGRAPHED. POSTWELD HEAT TREAT.
- ALL PIPING TO BE COLOR BANDED ACCORDING TO PANCANADIAN COLOR SCHEME.
- ALL ELECTRICAL WIRING SHALL BE IN ACCORDANCE WITH CSA STANDARDS. BUILDING INTERIOR: CLASS 1 DIV. 2, EXTERIOR: CLASS 1 DIV. 2
- ALL UTILITY FITTINGS TO BE 3000# RATING UNLESS OTHERWISE NOTED.
- ALL VENTS OUT BACK BUILDING WALL
- CUSTOMER TAG: -

STAMP AREA

| REV. | BY | CHK'D | REVISION DESCRIPTION | DATE |
|------|-----|-------|-----------------------------------|-----------|
| 5 | AI | | AS-BUILT | 05.04.01 |
| 4 | JRM | | INSTALL PCV-101 (TARTAN JOB 2950) | 04.10.04 |
| 3 | CC | | AS-BUILT FOR DPH JOB3 4330 | 01.08.13 |
| 2 | KLL | | MODIFIED FOR DPH JOB3 4330 | 01.04.13 |
| 1 | KC | | AS BUILT | 29 SEP 00 |

Weatherford Global
 4949 - 76th Avenue S.E.
 P.O. Box 5308, Station 'A'
 Calgary, Alberta, Canada T2H 1X6

403/236-5252 Main
 800/661-5252 Toll Free
 403/236-4261 Fax

TITLE: **PROCESS & INSTRUMENT DIAGRAM**
 SUPERIOR RAM-54, CATERPILLAR 3516-LE-AFR, AMERCOOL 156VCIB
 COMPRESSOR PACKAGE

END USER/CONSULTANT: PANCANADIAN RESOURCES
 CUST. P.O. No.: -

LOCATION: SCANDIA COMPRESSOR STATION
 LSD: 4-12-18-17-W4M

REVISION: 4
 DWG. REFERENCE: 003142-D-10 REV.0
 DWG. No. 003144-D-10 (SHEET 1 OF 1)