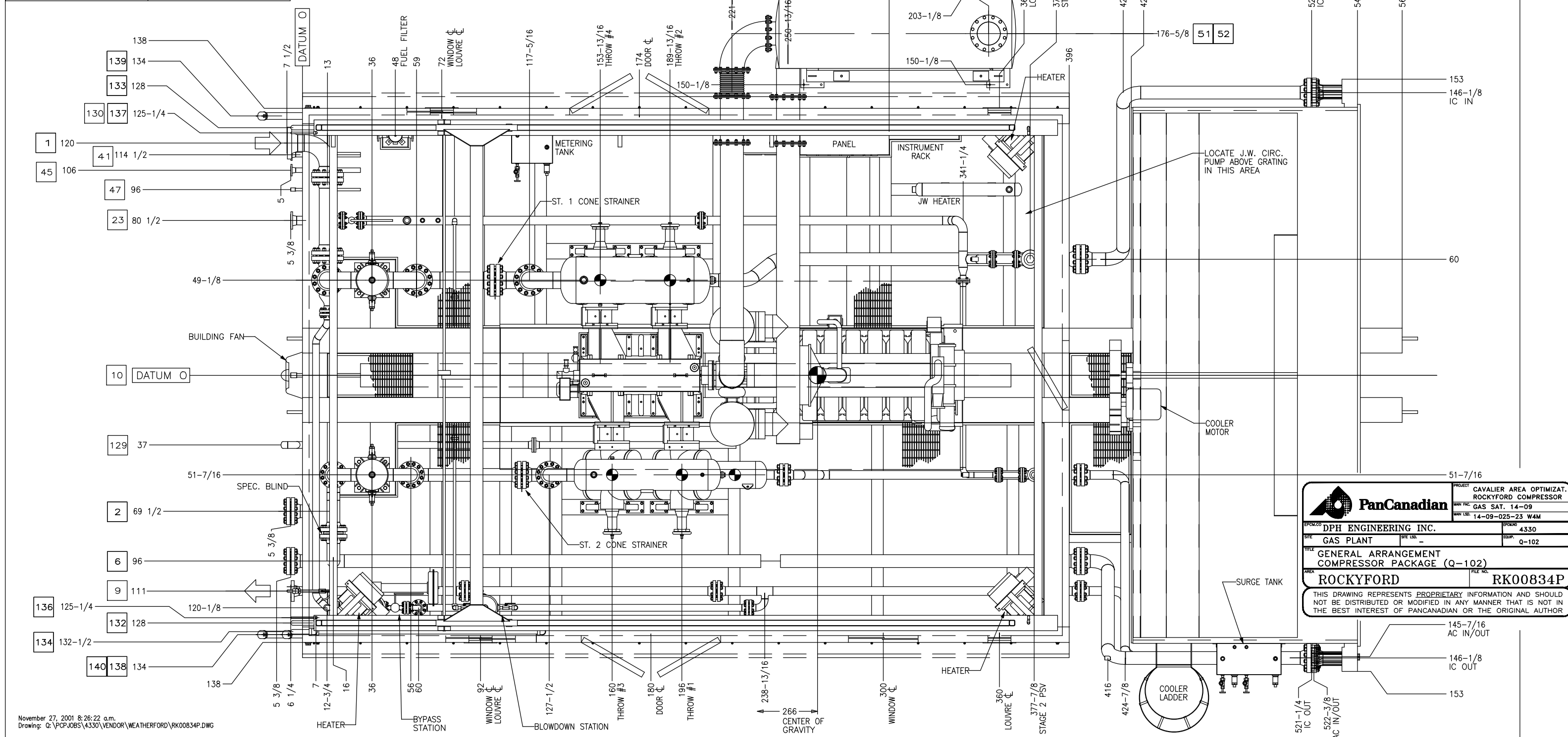


UNBALANCED FORCES AND COUPLES @ 1200 RPM			
PRIMARY VERTICAL FORCE = 145 LBS	PRIMARY VERTICAL COUPLE = 733 LB FT	SECONDARY VERTICAL FORCE = 0 LBS	SECONDARY VERTICAL COUPLE = 0 LB FT
PRIMARY HORIZONTAL FORCE = 434 LBS	PRIMARY HORIZONTAL COUPLE = 17979 LB FT	SECONDARY HORIZONTAL FORCE = 85 LBS	SECONDARY HORIZONTAL COUPLE = 128 LB FT



November 27, 2001 8:26:22 a.m.  
 Drawing: Q:\PCPJ0BS\4330\VENOR\WEATHERFORD\RK00834P.DWG

<b>PanCanadian</b>		CAVALIER AREA OPTIMIZAT. ROCKYFORD COMPRESSOR	
DPH ENGINEERING INC.		GAS SAT. 14-09	
GAS PLANT		14-09-025-23 W4M	
GENERAL ARRANGEMENT COMPRESSOR PACKAGE (Q-102)		4330	
ROCKYFORD		Q-102	
RK00834P		FILE NO.	
THIS DRAWING REPRESENTS PROPRIETARY INFORMATION AND SHOULD NOT BE DISTRIBUTED OR MODIFIED IN ANY MANNER THAT IS NOT IN THE BEST INTEREST OF PANCANADIAN OR THE ORIGINAL AUTHOR			

TAG	DESCRIPTION	SIZE	TAG	DESCRIPTION	SIZE
1	STAGE ONE INLET	8"-600# RF	130	COMPRESSOR CRANKCASE VENT	1 1/2" STACK
2	STAGE TWO INLET	6"-600# RF	132	PACKING VENT & DRAIN TANK VENT	2" STACK
6	STAGE ONE DISCHARGE	6"-600# RF	133	WASTE OIL TANK VENT	2" STACK
9	FINAL DISCHARGE	4"-600# RF	134	GLYCOL TANK VENT	2" STACK
10	SCRUBBER DRAIN HEADER	1 1/2" NPTF	136	COMPRESSOR LUBRICATOR OIL DAY TANK VENT	1/2" TUBE
23	PSV HEADER	4"-150# RF	137	ENGINE/COMP. LUBE OIL DAY TANK VENT	1/2" TUBE
41	FUEL GAS SUPPLY	2"-150# RF	138	PACKING VENT & DRAIN TANK PUMP-OUT	3" CAMLOCK
45	START GAS SUPPLY	2"-150# RF	139	WASTE OIL TANK PUMP-OUT	3" CAMLOCK
47	INSTRUMENT AIR SUPPLY	1" NPTF	140	GLYCOL TANK PUMP-OUT	3" CAMLOCK
51	ENGINE AIR INLET	12" PIPE	144	ENGINE JACKET WATER BLEED	1/2" NPTF
52	ENGINE EXHAUST	1/2" STACK	145	ENGINE AUX. WATER BLEED	1/2" NPTF
122	ENGINE/COMP. LUBE OIL DAY TANK FILL	3/4" NPTF	146	JACKET/AUX. WATER LOCAL FILL	3/4" NPTF
123	COMPRESSOR LUBRICATOR OIL DAY TANK FILL	3/4" NPTF			
126	JACKET WATER SURGE TANK VENT	2"-7# PR. CAP			
127	AUX. WATER SURGE TANK VENT	2"-7# PR. CAP			
129	START GAS VENT	3" MITRE			

DESCRIPTION	SHIPPING ARRANGEMENT	WEIGHT (lb)
COMPRESSOR	MOUNTED	15600
DRIVER	MOUNTED	18000
COOLER	SHIP LOOSE	28000
SKID	MOUNTED	66800
VESSEL	MOUNTED	9500
EXHAUST SYSTEM	MOUNTED/S. LOOSE	700/3400
MISC.	MOUNTED	24000
CRANE	MOUNTED	7250
BUILDING	MOUNTED	12000
TOTAL APPROX. SHIPPING WEIGHT		153850 (COOLER SHIPPED LOOSE)
TOTAL APPROX. WEIGHT OF ALL EQUIPMENT		185850

**GENERAL NOTES**

- IT IS WGS' RECOMMENDATION THAT ANY PRE-SPOOLING TO THIS COMPRESSOR PACKAGE CONTAIN FIELD WELDS AT ALL CUSTOMER CONNECTIONS.
- ALL PIPING MUST BE SELF-SUPPORTING BEYOND THIS COMPRESSOR PACKAGE.
- ALL DIMENSIONS ARE IN INCHES (UNLESS OTHERWISE SPECIFIED).
- DIMENSIONS IN "BOLD PRINT" DENOTE REFERENCE DIMENSIONS.
- DO NOT SCALE THIS DRAWING FOR CONSTRUCTION PURPOSES.
- PRIMER: (1) COAT ZINC CHROMATE (SHOP PRIMER)
- PAINT: PACKAGE - 4-5 MIL HIGH-SOLIDS EPOXY - PANCANADIAN TAUPE GRATING - (2) COATS MACHINE ENAMEL - BLACK
- DENOTES RECOMMENDED LOCATION OF SUPPORTS REQUIRED TO AID THE OUTBOARD CYLINDER SUPPORTS.
- DENOTES CENTER OF GRAVITY.

REV.	BY	CHKD	EDR No. of	REVISION DESCRIPTION	DATE
2	KLL			AS-BUILT - DPH PROJECT # 4330	01.04.13
1	KC			AS BUILT	08 NOV 00

**Weatherford Global**

Weatherford Global Compression Services  
 4949 - 76th Avenue S.E.  
 P.O. Box 5308, Station A  
 Calgary, Alberta, Canada T2H 1X6  
 403/236-5252 Main  
 800/661-5252 Toll Free  
 403/236-4261 Fax

**Weatherford GLOBAL**

GENERAL ARRANGEMENT  
 SUPERIOR RAM-54, CATERPILLAR 3516-LE-AFRC, AMERCOOL 156VCIB  
 NATURAL GAS COMPRESSOR PACKAGE

NO USER/CONSULTOR: PANCANADIAN RESOURCES  
 LOCATION: 2000 STOCK TBA  
 REV. P.D. No.: -  
 REVISION: 1  
 Dwg. No.: 003142-D-2 REV.1

DRAWN: K. CHAN  
 DATE: 04 MAY 00  
 UNIT No.: 003144  
 No. REQ'D: ONE PER WD  
 PRJ.LDR.: J. KASZAS  
 SCALE: 27:640

003144-D-2  
 (SHEET 1 OF 3)