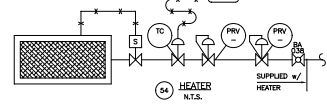


Please goto http://www.autodwg.com to register the program, the note will be removed.

THIS DRAWING IS THE PROPERTY OF NUSCO MANUFACTURING & SUPPLY LTD. AND IS LOANED TO THE RECIPIENT FOR THEIR CONSTRUCTION USE ONLY. NO REPRODUCTION OR ALTERATION OF THIS DRAWING IS PERMITTED WITHOUT THE WRITTEN PERMISSION OF NUSCO MANUFACTURING & SUPPLY LTD.



ITEM	QTY	PART	DESCRIPTION	MATERIAL
39	4	SUPPORT	2" x 2" x 1/4" ANGLE x 5'-3 1/8" LG	A-36
40	1	BASE PLATE	5'-5 3/4" x 3/16" PL x 12'-2" LG	A-36
41	2	BASE MEMBER	66 x 8.28 x 12'-8" LG	4021-44W
42	2	BASE MEMBER	66 x 8.28 x 5'-3 1/8" LG	4021-44W
43	2	SADDLE	2'-8 1/2" x 3/8" PL x 6'-11" LG (FILE 2506)	A-36
44	6	WEAR PLATE	4'9" x 3/16" PL	A-36
45	6	SUPPORT TAB	2" x 1/4" FB x 2" LG	A-36
46	2	WEAR PLATE	11" x 3/8" PL x 7'-8" LG	A-36
47	2	SEE PLATE	3'-3 7/8" x 10 GA. x 11'-8" LG	A-569
48	1	HINGE	PANO HINGE x 2'-0" LG	A-36
49	1	LATCH	LATCH (DWG. SS-TR-A)	A-36
50	2	DOOR SUPPORT	2" x 3/16" FB x 3'-2" LG	A-36
51	2	DOOR SUPPORT	2" x 3/16" FB x 11'-10" LG	A-36
52	2	HEATER SUPP.	HEATER STAND #1 (DWG. SS-HTR-A)	A-36
53	1	SET CABLE BRKT.	STD HEATER CABLE BRACKET (DWG. BRKT-J)	A-36
54	1	HEATER	CATADINE HEATER 12,000 BTU c/w SPILL REGULATOR & TEMP. CONTROL / 12 VOLT c/w START CABLES	A-36
56	2	RIB	7.5/8" x 3/8" PL x 11'-11" LG	A-36

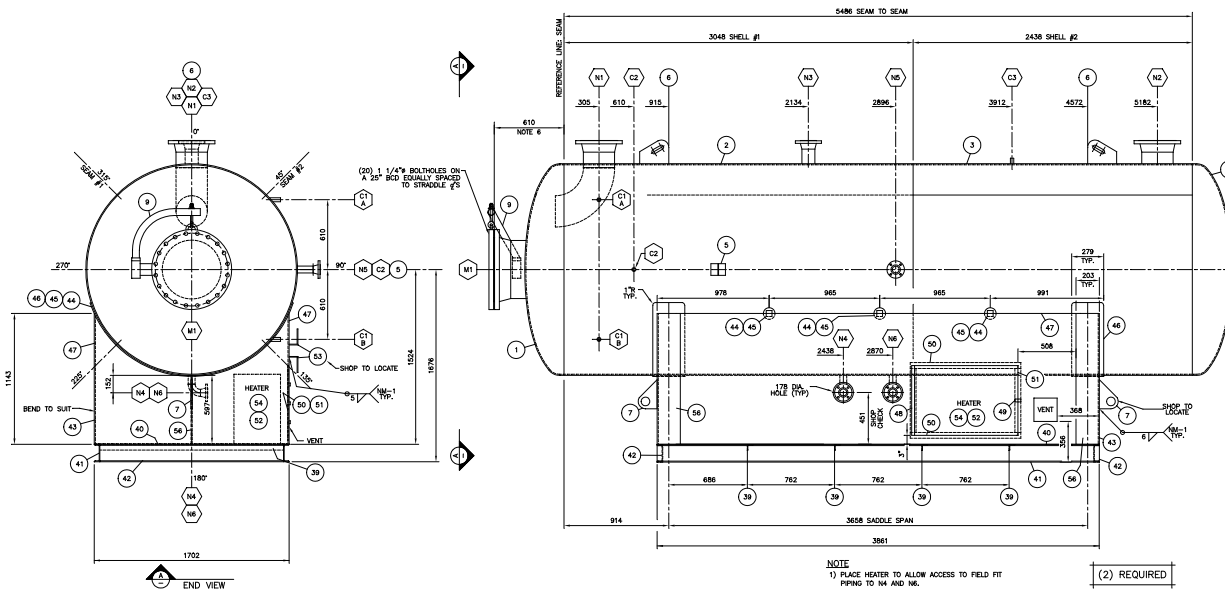
MARK	SIZE	RATING	TYPE	SERVICE	NOZZLE	REPAD	PROV'N	WELD	ITEM NO.'S
N1	10"	150#	RFRN	SHOWN	INLET C/W DEFLECTOR	SCH STD	N/A	8"	16,21,28
N2	10"	150#	RFRN	N/A	OUTLET	SCH STD	N/A	8"	16,22
N3	4"	150#	RFRN	N/A	SPARE	SCH STD	N/A	8"	17,23
N4	2"	150#	RFRN	N/A	SPANN	SCH STD	N/A	8"	18,25,27
N5	2"	150#	RFRN	N/A	LSH	SCH STD	N/A	8"	18,24
N6	2"	150#	RFRN	N/A	LT	SCH STD	N/A	8"	18,25,27
C1 A/B	3/4"	3000#	CPLG	N/A	LG	-	-	IX	11
C2	3/4"	3000#	CPLG	N/A	TI	-	-	IX	10
C3	3/4"	3000#	CPLG	N/A	LT BALANCE LINE	-	-	IX	10
M1	20"	150#	RFRN	N/A	W/WH/CL/END/OUT C/W BLIND & DWIT	SCH STD	N/A	N/A	9,14,15,20,32

- NOTES**
- 1) HEATER HOUSING FOR THE HEATER IS MOUNTED UNDER THE TANK w/w SADDLES, BASE DECK, INSULATION & ACCESS DOOR.
 - 2) ACCESS DOOR IS 36" WIDE x 24" HIGH c/w 2" x 3/16" FB STICH WELD TO THE BACK OF THE ORING.
 - 3) FULLY WELD WEAR PAD, LEAVING A 1" UNWELD PORTION @ LOWEST PART OF SADDLE, AS PER NM-1.
 - 4) FULLY WELD SADDLE AT HORNS, STICH WELD 3 @ 12 OTHERWISE WITH A 3/16" FILLET, AS PER NM-1.
 - 5) USE WELD PROCEDURE NM-1 WITH 3/16" FILLET WELD FOR ATTACHMENTS WELDS UNLESS OTHERWISE NOTED.
 - 6) SHOP CHECK HEAD DEPTH BEFORE CUTTING M1 NOZZLE MATERIAL.

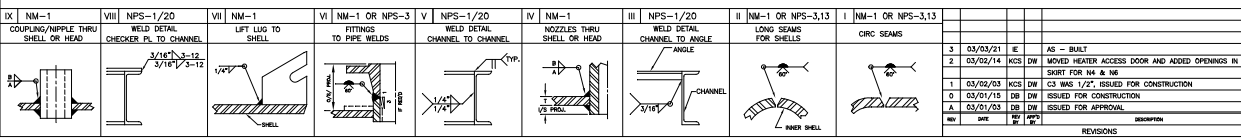
DESIGN DATA

BUILT ACCORDING TO NUSCO LATEST EDITION CONSTRUCTION STANDARDS

DESIGN PRESSURE: 245 PSIG
 MAX. OPERATING PRESS.: 14.9 PSIG
 HYDRO TEST: 517 PSIG
 RADIOGRAPHY: NONE
 SURFING WEAR: 15000 LBS
 VOLUME: 100 BBL.
 LABELS: NONE
 SERVICE: 500#
 CORROSION ALLOWANCE: 1/16"
 SURFACE PREP. - INTERNAL: NONE
 EXTERNAL COATING: COMMERCIAL BLAST AS PER SSPC-SP46
 (1) COAT OF INHIBITING PRIMER
 (2) COATS OF BLACK INDUSTRIAL H-TMP ENAMEL
 (3) SPRAY-ON URETHANE INSULATION w/w (2) COATS OF BLACK SURFACE SEALANT ON THE ENCLOSURE AND THE UNDERSIDE OF THE HOOD



ITEM	QTY	PART	DESCRIPTION	MATERIAL
1	2	HEAD	72" ID x 3/8" NOM THK F&D c/w 2" SF	A-516-70N
2	1	SHELL	72" ID x 3/8" THK x 10'-0" LG	A-516-70N
3	1	SHELL	72" ID x 3/8" THK x 8'-0" LG	A-516-70N
5	1	NAME PLATE	STD NAME PL BRACKET (DWG. BRKT-D) c/w NAME PL	A-36
6	2	LIFT LUG	STD F&D LFT LUG w/ INSULATION (DWG. LG-F&D-B) FILE 1299	A-36
7	2	TE-DOWN LUG	STD TE-DOWN LUG (DWG. LG-F&D-C) FILE 1600	A-36
8	1	DWIT	STD DWIT (DWG. SS-DW-A)	A-36
10	2	COUPLING	3/4" 3000# RL NPT COUPLING x 4" LG	A-105N
11	2	COUPLING	3/4" 3000# RL NPT COUPLING x 6" LG	A-105N
12	1	FLANGE	20" SCH STD RFRN FLANGE	A-105N
13	1	FLANGE	20" SCH STD RFRN FLANGE	A-105N
14	1	FLANGE	10" SCH STD RFRN FLANGE	A-105N
15	1	FLANGE	10" SCH STD RFRN FLANGE	A-105N
16	2	FLANGE	4" SCH STD RFRN FLANGE	A-105N
17	1	FLANGE	4" SCH STD RFRN FLANGE	A-105N
18	3	FLANGE	2" SCH STD RFRN FLANGE	A-105N
19	1	PIPE	20" SCH STD SMLS PIPE x 6 1/4" LG (SHOP CHECK)	A-106B
20	1	PIPE	10" SCH STD SMLS PIPE x 5 1/2" LG	A-106B
21	1	PIPE	10" SCH STD SMLS PIPE x 5 1/4" LG	A-106B
22	1	PIPE	4" SCH STD SMLS PIPE x 5 3/4" LG	A-106B
23	1	PIPE	2" SCH STD SMLS PIPE x 6 1/4" LG	A-106B
24	2	PIPE	2" SCH STD SMLS PIPE x 3 3/4" LG	A-106B
25	2	ELBOW	2" SCH STD 90° BW LR ELBOW	A-234-WPB
26	1	ELBOW	10" SCH STD 90° BW LR ELBOW	A-234-WPB
27	1	GASKET	20" SCH STD 1/8" THK FLEXITAC GASKET	316 SS
30	1	BOLTING	1 1/8" x 6 1/4" LG STUDS c/w (2) NUTS EA	A-191-30N
31	20	BOLTING	1 1/8" x 6 1/4" LG STUDS c/w (2) NUTS EA	A-191-30N
32	20	BOLTING	1 1/8" x 6 1/4" LG STUDS c/w (2) NUTS EA	A-191-30N
33	20	BOLTING	1 1/8" x 6 1/4" LG STUDS c/w (2) NUTS EA	A-191-30N
34	20	BOLTING	1 1/8" x 6 1/4" LG STUDS c/w (2) NUTS EA	A-191-30N
35	20	BOLTING	1 1/8" x 6 1/4" LG STUDS c/w (2) NUTS EA	A-191-30N
36	20	BOLTING	1 1/8" x 6 1/4" LG STUDS c/w (2) NUTS EA	A-191-30N
37	20	BOLTING	1 1/8" x 6 1/4" LG STUDS c/w (2) NUTS EA	A-191-30N
38	20	BOLTING	1 1/8" x 6 1/4" LG STUDS c/w (2) NUTS EA	A-191-30N



NUSCO MANUFACTURING & SUPPLY LTD.

APACHE CANADA LTD.
 c/o DPH ENGINEERING INC.

FILE: 100 BBL SINGLE WALL A/G FLARE KNOCK-OUT DRUM c/w HEATER
 6'-0" DIA. x 18'-0" SEAM TO SEAM

LOGO: T0310-02000

DATE: 07/21/29
 SCALE: 3/4"=1'-0"
 NO. IN: 006372 & 006373
 SHEET NO.: T2081-900
 REV: 3