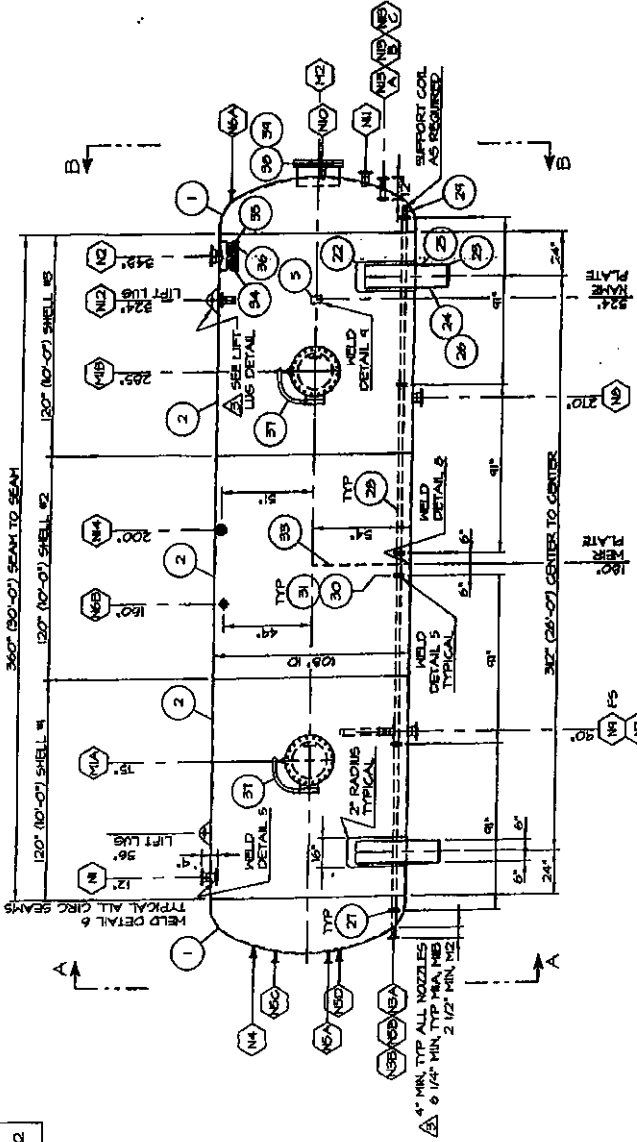
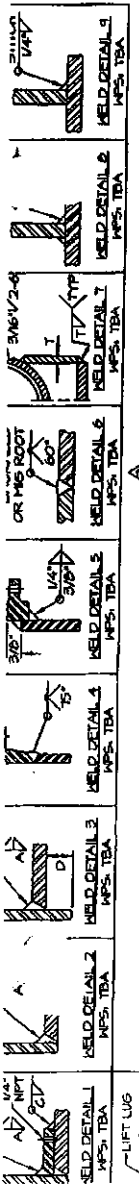


MARK	SIZE	SOH	CLASS	TYPE	SERVICE	WELD	A	D	ITEM NO'S
N1	4"	XXH	150	REFIN INLET	3, 4	3/8"	-	-	9, 19, 10
N2	6"	150	150	REFIN GAS OUTLET	3, 4	3/8"	-	-	13, 14
N3	2"	XXH	150	REFIN COIL	3, 4	1/2"	-	-	7, 17
N4	1"	XXH	150	REFIN F	2, 4	3/8"	-	-	6, 16
N5	1"	XXH	150	REFIN SOLIDS LG	2, 4	3/8"	-	-	6, 16
N6	1"	XXH	150	REFIN LG / SPARGE	2, 4	3/8"	-	-	6, 16
N7	4"	XXH	150	REFIN SOLIDS DRAIN	2, 4	5/8"	-	-	9, 19
N8	4"	XXH	150	REFIN LIQUIDS DRAIN	2, 4	5/8"	-	-	9, 19
N9	3"	XXH	150	REFIN LIQUIDS DRAIN	2, 4	5/8"	-	-	9, 19
N10	3"	XXH	150	REFIN LIQUIDS DRAIN	2, 4	5/8"	-	-	9, 19
N11	3"	XXH	150	REFIN MC LC	2, 4	3/8"	-	-	8, 18, 21
N12	3"	XXH	150	REFIN WATER LC	2, 4	3/8"	-	-	8, 18
N13	3"	XXH	150	REFIN PSV	2, 4	3/8"	-	-	8, 18
N14	2"	XXH	150	REFIN SPARGE	3, 4	1/2"	-	-	7, 17
N15	2"	XXH	150	REFIN SPARGE	2, 4	1/2"	-	-	7, 17
M16	20"	STD	150	REFIN MANWAY	1, 4	3/8"	-	-	3, 11, 12, 20
M17	20"	150	150	REFIN MANWAY	3	3/8"	-	-	1, 10, 12, 15



ELEVATION VIEW

GENERAL NOTES

1. QUALITY CONTROL PROGRAM NUMBER: ASME-8522
2. WELDING PROCEDURE REGISTRATION NUMBER: W-38002
3. CAPACITY: 2000 PIS
4. SERVICE: HYDROCARBONS
5. EXPOSED INSIDE OR OUTSIDE EDGES OF NOZZLES SHALL BE TOOLS CLEAN (TR)
6. SURFACE SHALL HAVE AN 1/8" MINIMUM RADIUS
7. FRINGE AND PAINT AS PER CODE
8. ALL BOLTS OR BRACKET IF MORE THAN ONE PIECE IS USED, TO HAVE A MINIMUM 1/4" NPT KEEP HOLE ON THE SHELL IN THE FIELD IN A TWO-PIECE REPAIR SHALL CLEAN AND COVER ALL OPENINGS FOR CORROSION
9. USE WELDING PROCEDURE (TBA) FOR ALL TACK WELDS
10. CRN DRAWINGS: 3968-1 REV 3, 3968-2 REV 5, CRN CALCULATIONS: 3968CORR-1, 3968CORR-2

COIL DESIGN NOTES

- DESIGN & FABRICATE TO: ASME SECTION VIII DIVISION 1, MAXIMUM ALLOWABLE WORKING PRESSURE (MAWP) 125 PSIG
- INTERNAL MAWP: 150 PSIG
- DESIGN TEMPERATURE: 350° F
- MINIMUM DESIGN METAL TEMPERATURE (MDMT): -50° F AT 150 PSIG
- RADIOGRAPHY: NONE PER (MAWP) 125 PSIG
- HYDROSTATIC TEST PRESSURE: 165 PSIG
- CORROSION ALLOWANCE (INTERNAL): 0"
- SERVICE: EXPANSIBLE FLUID

DESIGN NOTES

- DESIGN & FABRICATE TO: ASME SECTION VIII DIVISION 1, 2010 EDITION, 3011 APPENDIX A
- MAXIMUM ALLOWABLE WORKING PRESSURE (MAWP) 125 PSIG
- INTERNAL MAWP: 150 PSIG
- DESIGN TEMPERATURE: 350° F
- MINIMUM DESIGN METAL TEMPERATURE (MDMT): -50° F AT 125 PSIG
- RADIOGRAPHY: NONE PER (MAWP) 125 PSIG
- HYDROSTATIC TEST PRESSURE: 165 PSIG
- CORROSION ALLOWANCE (INTERNAL): 0"
- SERVICE: EXPANSIBLE FLUID

ALBERTA BOILERS SAFETY ASSOCIATION
PROVINCE OF ALBERTA
SAFETY CODES ACT
V 9 3 6 6 . 2

REG. NO. 3968 SHTS 1, 2 REV 3 AS NOTED.

DESIGN Temp. C: 350

MAWP: 150

VESEL INT: 150

DATE: 10/21/02

ACCEPTED: [Signature]

DESIGNER: F. SCHERPENISSE

NO.	DATE	REVISION	BY	APP.
1	12-04-02	NOTES OUTSIDE PROJECTION	P.J.D.	R.J.
2	12-04-21	REVERSE NOTE 12. COIL IMPACT TESTS	P.J.D.	R.J.
3	12-08-21	REVISED MAWP FOR REGISTRATION	P.J.D.	R.J.
4	12-08-27	ISSUED FOR APPROVAL	P.J.D.	R.J.

CANADIAN REGISTRATION NUMBER: [Blank]

CORAL OILFIELD SERVICES INC.
10000 104 STREET
GRANGE PARKWAY AB T2L 2L2
TELEPHONE: (780) 992-8900 FAX: (780) 992-6868

CLIENT: SEPARATOR

DATE: 12-08-03

BOO NO.: 3968

JOB NO.: 100" ID X 30'-0" S/S

SCALE: NTS

DRAWN BY: P.J.D.

CHECKED BY: R.J.

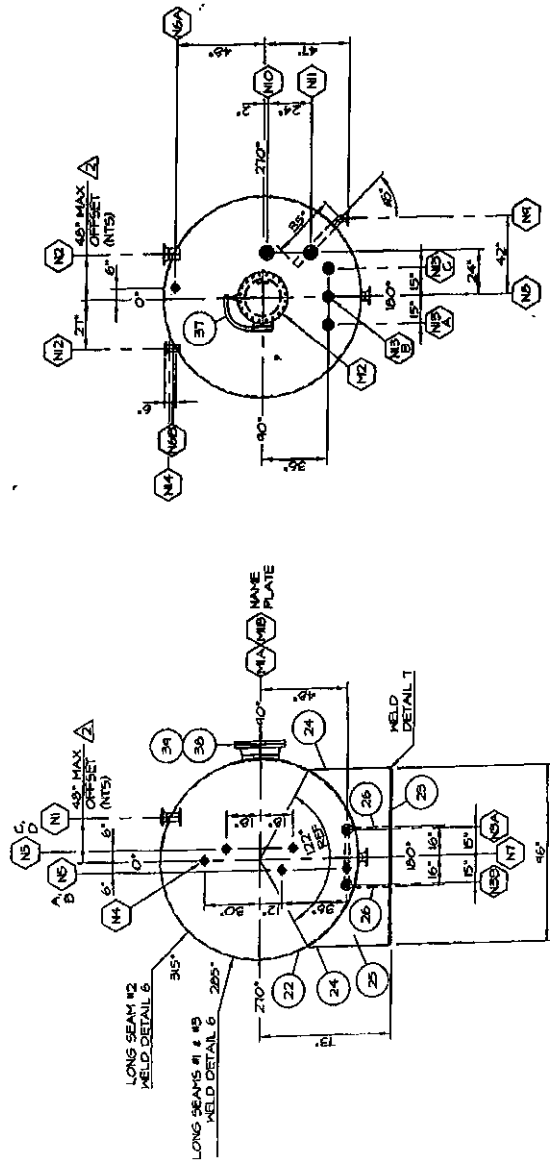
APP BY: P.J.D.

DWG NO.: SHEET 1 OF 2

REV: 3

BLUE DIAMOND DESIGN LTD. 1878 VALLEY VIEW PLACE VICTORIA, BC V8B 6H6 TELEPHONE: (250) 541-6432 FAX: (250) 541-6432

ITEM #	DESCRIPTION	MATERIAL
1	HEADS - 108" ID x 5/8" THK (5007 MIN) 2L SE 2" SF	SA-108
2	PLATE - 108" ID x 1/2" THK x 10'-0" LG	SA-108
3	PLATE - 1/2" THK x 52" OD x 20' 10 1/2" ID	SA-108
4	PLATE - 1/2" THK x 10' x 16" LG	SA-108
5	STANDARD NAME PLATE AND BRACKET	304 SS/SA-36
6	FLANGE - 1" CLASS 150 BRN GN SCH 40X1 BORE	SA-108
7	FLANGE - 2" CLASS 150 BRN GN SCH 40X1 BORE	SA-108
8	FLANGE - 3" CLASS 150 BRN GN SCH 40X1 BORE	SA-108
9	FLANGE - 4" CLASS 150 BRN GN SCH 40X1 BORE	SA-108
10	FLANGE - 5" CLASS 150 BRN GN SCH 40X1 BORE	SA-108
11	FLANGE - 6" CLASS 150 BRN GN SCH 40X1 BORE	SA-108
12	FLANGE - 8" CLASS 150 BRN GN SCH 40X1 BORE	SA-108
13	FLANGE - 10" CLASS 150 BRN GN SCH 40X1 BORE	SA-108
14	FLANGE - 12" CLASS 150 BRN GN SCH 40X1 BORE	SA-108
15	FLANGE - 14" CLASS 150 BRN GN SCH 40X1 BORE	SA-108
16	FLANGE - 16" CLASS 150 BRN GN SCH 40X1 BORE	SA-108
17	FLANGE - 18" CLASS 150 BRN GN SCH 40X1 BORE	SA-108
18	FLANGE - 20" CLASS 150 BRN GN SCH 40X1 BORE	SA-108
19	FLANGE - 22" CLASS 150 BRN GN SCH 40X1 BORE	SA-108
20	FLANGE - 24" CLASS 150 BRN GN SCH 40X1 BORE	SA-108
21	FLANGE - 26" CLASS 150 BRN GN SCH 40X1 BORE	SA-108
22	FLANGE - 28" CLASS 150 BRN GN SCH 40X1 BORE	SA-108
23	FLANGE - 30" CLASS 150 BRN GN SCH 40X1 BORE	SA-108
24	FLANGE - 32" CLASS 150 BRN GN SCH 40X1 BORE	SA-108
25	FLANGE - 34" CLASS 150 BRN GN SCH 40X1 BORE	SA-108
26	FLANGE - 36" CLASS 150 BRN GN SCH 40X1 BORE	SA-108
27	FLANGE - 38" CLASS 150 BRN GN SCH 40X1 BORE	SA-108
28	FLANGE - 40" CLASS 150 BRN GN SCH 40X1 BORE	SA-108
29	FLANGE - 42" CLASS 150 BRN GN SCH 40X1 BORE	SA-108
30	FLANGE - 44" CLASS 150 BRN GN SCH 40X1 BORE	SA-108
31	FLANGE - 46" CLASS 150 BRN GN SCH 40X1 BORE	SA-108
32	FLANGE - 48" CLASS 150 BRN GN SCH 40X1 BORE	SA-108
33	FLANGE - 50" CLASS 150 BRN GN SCH 40X1 BORE	SA-108
34	FLANGE - 52" CLASS 150 BRN GN SCH 40X1 BORE	SA-108
35	FLANGE - 54" CLASS 150 BRN GN SCH 40X1 BORE	SA-108
36	FLANGE - 56" CLASS 150 BRN GN SCH 40X1 BORE	SA-108
37	FLANGE - 58" CLASS 150 BRN GN SCH 40X1 BORE	SA-108
38	FLANGE - 60" CLASS 150 BRN GN SCH 40X1 BORE	SA-108
39	FLANGE - 62" CLASS 150 BRN GN SCH 40X1 BORE	SA-108
40	FLANGE - 64" CLASS 150 BRN GN SCH 40X1 BORE	SA-108
41	FLANGE - 66" CLASS 150 BRN GN SCH 40X1 BORE	SA-108
42	FLANGE - 68" CLASS 150 BRN GN SCH 40X1 BORE	SA-108
43	FLANGE - 70" CLASS 150 BRN GN SCH 40X1 BORE	SA-108
44	FLANGE - 72" CLASS 150 BRN GN SCH 40X1 BORE	SA-108
45	FLANGE - 74" CLASS 150 BRN GN SCH 40X1 BORE	SA-108
46	FLANGE - 76" CLASS 150 BRN GN SCH 40X1 BORE	SA-108
47	FLANGE - 78" CLASS 150 BRN GN SCH 40X1 BORE	SA-108
48	FLANGE - 80" CLASS 150 BRN GN SCH 40X1 BORE	SA-108
49	FLANGE - 82" CLASS 150 BRN GN SCH 40X1 BORE	SA-108
50	FLANGE - 84" CLASS 150 BRN GN SCH 40X1 BORE	SA-108
51	FLANGE - 86" CLASS 150 BRN GN SCH 40X1 BORE	SA-108
52	FLANGE - 88" CLASS 150 BRN GN SCH 40X1 BORE	SA-108
53	FLANGE - 90" CLASS 150 BRN GN SCH 40X1 BORE	SA-108
54	FLANGE - 92" CLASS 150 BRN GN SCH 40X1 BORE	SA-108
55	FLANGE - 94" CLASS 150 BRN GN SCH 40X1 BORE	SA-108
56	FLANGE - 96" CLASS 150 BRN GN SCH 40X1 BORE	SA-108
57	FLANGE - 98" CLASS 150 BRN GN SCH 40X1 BORE	SA-108
58	FLANGE - 100" CLASS 150 BRN GN SCH 40X1 BORE	SA-108
59	FLANGE - 102" CLASS 150 BRN GN SCH 40X1 BORE	SA-108
60	FLANGE - 104" CLASS 150 BRN GN SCH 40X1 BORE	SA-108



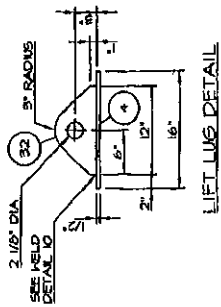
ORIENTATION VIEW B-B

ORIENTATION VIEW A-A

V 9366 . 2

FABRICATION NOTES

- THE SHELL LENGTH MAY BE LESS THAN 30'-0" PROVIDED THE SPACING OF NOZZLES MEET CODE.
- MATERIAL SPECIFICATIONS MAY BE UPGRADED AS FOLLOWS:
 - WELDED FITTINGS (W/F) SA-234-108 TO SA-234-108
 - WELDED FITTINGS (W/F) SA-234-108 TO SA-234-108
 - PIPE (B&A) SA-38-B, ERK TO SA-108-B TO SA-38-B
 - FORGINGS (B&A) SA-108-B, SA-108-B TO SA-108-B TO SA-38-B
- ANY CONNECTION MAY BE OMITTED EXCEPT A DRAIN (1" NPS MIN.) LOCATED AT THE LOWEST POINT OF THE VESSEL PER US-28F AND ONE INSPECTION MANWAY.
- MANWAYS MIA & MIB MAY ONLY BE LOCATED RADIALLY ON THE SHELL AND M2 MAY ONLY BE LOCATED ON THE CIRCUMFERENCE OF THE HEADS.
- RADIOGRAPHY ON THE CIRCUMFERENTIAL SEAMS MAY BE INCREASED TO FULL PER US-110.
- POST WELD HEAT TREATMENT MAY BE AS REQUIRED PROVIDED A HEAT TREATING PROCEDURE IS USED PER US-28F AND THE US-28F F 403.1 FOR 44 MINUTES (MINIMUM).



LIFT LUGS DETAIL

REV.	BY	DATE	DESCRIPTION
1	RJ	12-09-93	ADD NOTES E, F
2	RJ	12-09-93	ADD N, N2 SHELL OFFSET DISTANCE
3	RJ	12-09-93	REVISED, ISSUED FOR REDESIGNATION
4	RJ	12-09-93	ISSUED FOR APPROVAL
5	RJ	12-09-93	REVISION

CORAL OILFIELD SERVICES INC.
 BOX 3160, 15200 - 94 STREET
 GRANDE PRAYRE, AB T8X 0L2
 TELEPHONE: (780) 802-8000 FAX: (780) 802-8066

REV.	BY	DATE	DESCRIPTION
1	RJ	12-09-93	ADD NOTES E, F
2	RJ	12-09-93	ADD N, N2 SHELL OFFSET DISTANCE
3	RJ	12-09-93	REVISED, ISSUED FOR REDESIGNATION
4	RJ	12-09-93	ISSUED FOR APPROVAL
5	RJ	12-09-93	REVISION

October 22, 2012

Attention: Riley Johnson
CORAL OILFIELD SERVICES INC
BOX 21160
GRANDE PRAIRIE, AB

The design submission, tracking number 2012-07082, originally received on October 15, 2012 was surveyed and accepted for registration as follows:

CRN : V9366.2

Accepted on: October 22, 2012

Reg Type: Revision To accepted Design

Drawing No. : 3968 SHTS 1, 2 Rev 3 As Noted

Design registered in the name of : CORAL OILFIELD SERVICES INC

Description	MAWP	Design Temperature	MDMT
Internal Pressure	862 kPa	149 ^o C	-46 ^o C
COIL MAWP	1034 kPa	177 ^o C	-46 ^o C
COIL EXTERNAL PRESS.	862 kPa	177 ^o C	-46 ^o C

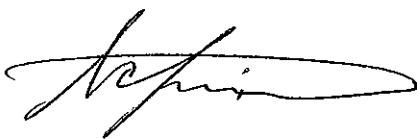
The registration is conditional on your compliance with the following notes:

WPS # to be indicated on the construction drawing for each applicable weld detail prior to start fabrication.

An invoice covering survey and registration fees will be forwarded from our Revenue Accounts.

If you have any question don't hesitate to contact me by phone at (403) 291-7071 ext 2219 or fax (403) 291-4545 or e-mail scherpenisse@absa.ca.

Sincerely,



SCHERPENISSE, FERNANDO

**Technical
Safety Authority
of Saskatchewan**

330 - 1855 Victoria Avenue
Regina, SK S4P 3T2
Canada

306-787-1443
info@tsask.ca
www.tsask.ca

REGISTRATION APPROVAL

04-Dec-12

Coral Oilfield Services Inc.
Box 21160
Grande Prairie, AB
T8V 6W7

Our File 46728 [0V]

ATTENTION : Riley Johnson

With reference to your submission respecting the registration of the item below, for legal use in the province, please note we have surveyed, approved and registered this design as noted.

MANUFACTURER :	Coral Oilfield Services Inc.	
ITEM :	DRAWING NUMBER :	CRN:
Separator	3968 SHTS 1&2 Rev. 3 As Noted	V9366.23

We wish to point out that every vessel must be constructed strictly in accordance with the registered design.

In addition to stamping every vessel with the registration number given above and as required in CSA Code B51, a Manufacturer's Data Report must be forwarded to this office immediately at the time a vessel is shipped. Such forms may be obtained upon request.

Sincerely,



Steven Court

Codes and Standards Compliance

REMARKS: CRN registered under reciprocal agreement and conditional upon compliance with the notes on the original ABSA registration.



CORAL OILFIELD SERVICES INC.
BOX 21160
GRAND PRAIRIE AB T8V 6W7

Date: November 21, 2012
Account #: 52081
Journal #: 55964
Our File #: 5298193

Attn: RILEY JOHNSON

Re: Application for Design Registration

The design, as detailed in your, Ref: 4014, for a Pressure Vessel is accepted for registration as follows:

Registered To: CORAL OILFIELD SERVICES INC. **CRN:** V9366.21

MDMT: -50 deg F

MAWT: 300 deg F

MAWP: 125 psig

Drawing #: 3968 Shts 1, 2

Drawing Revision: 3

Conditions Of Registration:

1- Coil design condition: 150 psig (internal) & 125 psig (external) @ -50/+350 deg F.

	<u>Amount</u>	<u>HST</u>	<u>Total</u>
Fee for reviewing your design:	\$222.00	\$26.64	\$248.64
Total:	\$222.00	\$26.64	\$248.64
Less amount received with submission:			\$0.00
An invoice for \$248.64 will follow.			\$248.64

Contact me if you have any questions.

ALIREZA BONAKDAR
(778) 396-2032
Alireza.Bonakdar@safetyauthority.ca
Design Engineer

cc:



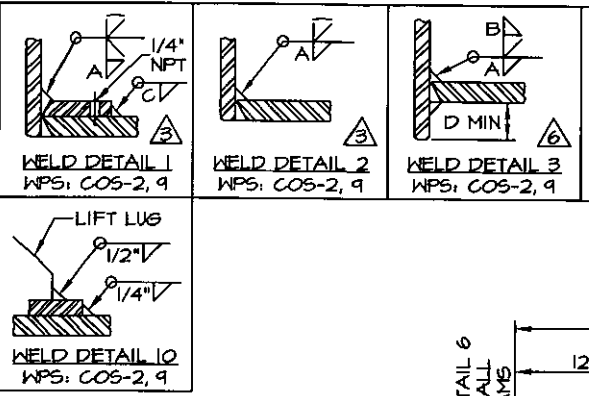
505 - 6th Street, Suite 200
New Westminster, BC V3L 0E1

Toll Free: 1-866-566-SAFE

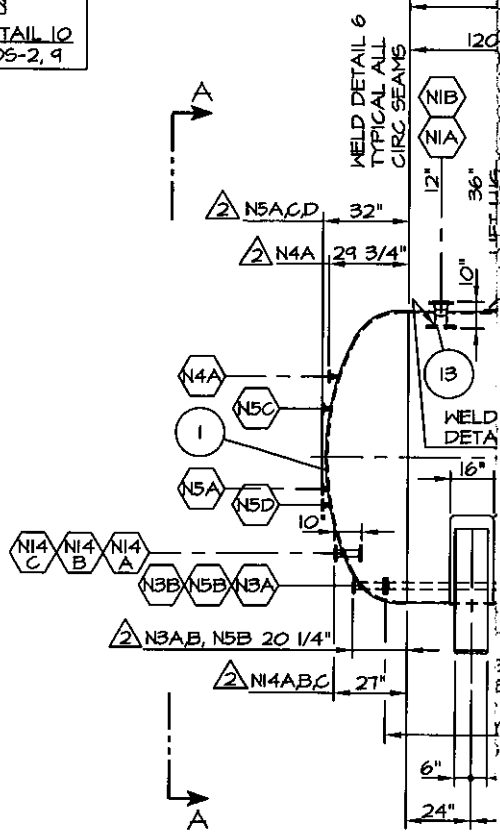
Fax: (778) 396 - 2064

www.safetyauthority.ca

THIS DRAWING IS THE PROPERTY OF CORAL OILFIELD SERVICES INC. IT MAY NOT BE REPRODUCED WITHOUT THE PERMISSION OF CORAL OILFIELD SERVICES INC.



INJECTION SCHEDULE						
SERVICE	WELD	A	B	C	D	ITEM NO'S
INLET	3, 4	3/8"	-	-	1/2"	9, 19, 13
GAS OUTLET	3, 4	3/8"	-	-	1/2"	9, 19, 10
COIL	3, 4	1/2"	3/8"	-	1/2"	7, 17
...	2, 4	3/8"	-	-	-	6, 16
SOLIDS LG	2, 4	3/8"	-	-	-	6, 16
G / SPARE	2, 4	3/8"	-	-	-	6, 16
SOLIDS DRAIN	2, 4	1 1/16"	-	-	-	9, 19
LIQUIDS DRAIN	2, 4	1 1/16"	-	-	-	9, 19
LIQUID OUTLET	2, 4	3/8"	-	-	-	8, 18, 21
...	2, 4	3/8"	-	-	-	8, 18
...	2, 4	3/8"	-	-	-	8, 18
...	2, 4	3/8"	-	-	-	8, 18
...	3, 4	1/2"	3/8"	-	1/2"	7, 17
...	3, 4	1/2"	3/8"	-	1/2"	7, 17
...	1, 4	3/8"	-	3/8"	-	3, 11, 12, 20



CONNECTION NOTES

1. SPECIFICATIONS MAY BE UPGRADED AS FOLLOWS:
 2. FITTING (B16.9): SA-234-WPB TO SA-420-WPL6
 3. FITTING (B36.10): SA-53-B, ERW TO SA-106-B TO SA-333-GR 6
 4. FITTING (B16.5): SA-105N TO SA-350-LF2 CLASS 1

COIL DESIGN NOTES

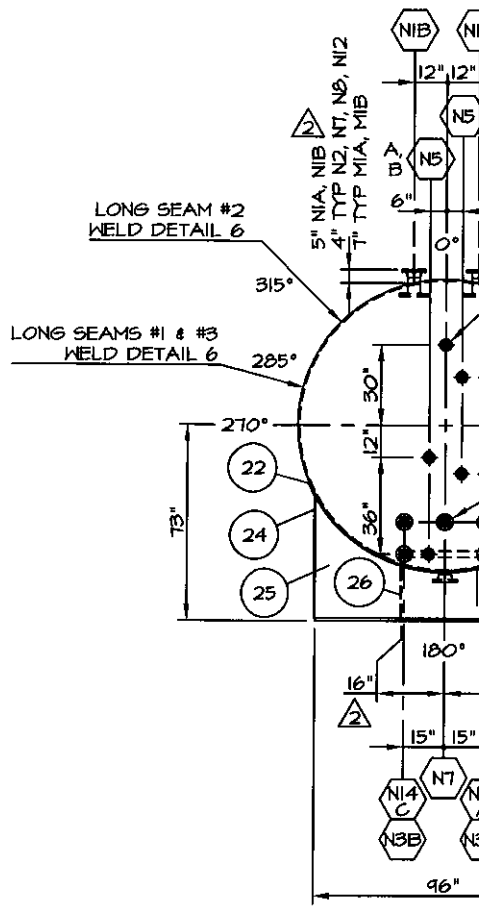
- ⚠️ DESIGN & FABRICATE TO:
 ASME SECTION VIII, DIVISION 1, 2017 EDITION
 MAXIMUM ALLOWABLE WORKING PRESSURE
 INTERNAL MAWP: 150 PSIG
 EXTERNAL MAWP: 125 PSIG
 DESIGN TEMPERATURE: 350° F
 MINIMUM DESIGN METAL TEMPERATURE (MDMT):
 -50° F AT 150 PSIG
 IMPACT TESTS: EXEMPT PER UCS-66a, UCS-66b
 RADIOGRAPHY: NONE PER UW-11c
 PWHT PER UCS-56. NOT REQUIRED BY CODE,
 MAY PER ADDED TO MATCH VESSEL
 HYDROSTATIC TEST PRESSURE: 195 PSIG MINIMUM
 CORROSION ALLOWANCE (INTERNAL): 0"
 CORROSION ALLOWANCE (EXTERNAL): 1/16"
 SERVICE: EXPANSIBLE FLUID

DATE	REVISION	CALC REV	BY	APP
03-20	UPDATED TO 2017 CODE	4, 2	LES	RJ
03-10	ADD NOTE A, REVISE NOTE 12	3, 1	PJD...	RJ
06-01	UPDATED TO 2015 CODE	3, 1	PJD...	RJ
09-29	REVISE WD-1, WD-2, WD-3	3, 1	PJD...	RJ
12-24	REVISE NOZZLE OUTSIDE PROJ'S	3, 1	PJD...	RJ
10-10	REVISED, ISSUED FOR APPROVAL	3, 1	PJD...	RJ
10-09	ISSUED FOR APPROVAL	2, 1	PJD...	RJ

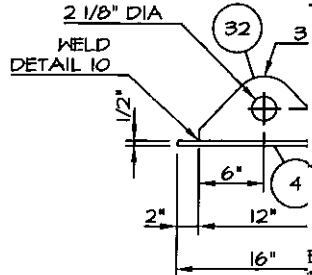
CORAL OILFIELD SERVICES INC.
 BOX 21160, 15303 - 94 STREET
 GRANDE PRAIRIE, AB T8X 0L2
 TELEPHONE: (780) 882-9800 FAX: (780) 882-6868

12-10-07	SEPARATOR 108" ID x 30'-0" S/S 125 PSIG AT -50° / 300° F	REV.
4617,5173,5486		6
NTS		
BY: PJD...		
DESIGNED BY: RJ		DWG NO.: SHEET 1 OF 2 3968-01

THIS DRAWING IS THE PROPERTY OF CORAL OILFIELD SERVICES INC. IT MAY NOT BE REPRODUCED WITHOUT THE PERMISSION OF CORAL OILFIELD SERVICES INC.



ORIENTATION



LIST OF MATERIALS		NOTE A
DESCRIPTION		MATERIAL
HK (500" MIN) 2:1 SE, 2" SF		SA-516-70N
K x 10'-0" LG	SHELL #1, #2, #3	SA-516-70N
D x 20 1/8" ID	MIA, MIB REPAD, NOTE 9	SA-516-70N
16" LG	LIFT LUG PAD, NOTE 9	SA-516-70N
RFWN C/W SCH XXH BORE	N4AB, N5AD, N6AF	SA-105N
N C/W SCH XXH BORE	N3AB, N3ABC, N4ABC	SA-105N
RFWN C/W SCH XXH BORE	N9, N10, N11, N12	SA-105N
RFWN C/W SCH XXH BORE	N1AB, N2, N7, N8	SA-105N
RF50	N2 INTERNAL	SA-105N
RFWN C/W SCH STD BORE	MIA, MIB	SA-105N
RF BLIND	MIA, MIB	SA-105N
RF BLIND	NIA, NIB, 4 5/8" DIA CUT-OUT	SA-105N
x CUT TO SUIT	N4AB, N5AD, N6AF	SA-106-B
x CUT TO SUIT	N3AB, N3ABC, N4ABC	SA-106-B
x CUT TO SUIT	N9, N10, N11, N12	SA-106-B
x CUT TO SUIT	NIA, NIB, N2, N7, N8	SA-106-B
x CUT TO SUIT	MIA, MIB	SA-106-B
LR 45° WELD	N9	SA-234-WPB
128" LG	WEAR PL, ROLL-109" ID, NOTE 9	SA-516-70N
" LG	BASE PLATE	SA-36
45 3/8" LG	SIDE PLATE	SA-36
1/8" x 96" LG	FACE PLATE, TRIM TO FIT	SA-36
19 1/2" LG	RIB PLATE	SA-36
RF50	COIL, N13ABC	SA-105N
CUT TO SUIT	COIL	SA-53-B, ERW
LR 90° WELD	COIL	SA-234-WPB
SPIRAL WOUND x 1/8" THK	COIL	304 SS
LG C/W 2 NUTS EACH (SA-194-2HM)	COIL	SA-193-BTM
LG	SEE LIFT LUG DETAIL	SA-36
1/8" OD x 54" HIGH	WIER PLATE	SA-36
AND BRACKET		304 SS/SA-36
MANWAY DAVIT	MIA, MIB	SA-36
SPIRAL WOUND x 1/8" THK	MIA, MIB	304 SS
LG C/W 2 NUTS EACH (SA-194-2HM)	MIA, MIB	SA-193-BTM

CORAL OILFIELD SERVICES INC.
 BOX 21160, 15303 - 94 STREET
 GRANDE PRAIRIE, AB T8X 0L2
 TELEPHONE: (780) 882-9800 FAX: (780) 882-6868

LIFT LUG D	12-10-01
	4617, 5173, 5486
	NTS
BY:	PJD...
ED BY:	RJ
	RJ

SEPARATOR	
108" ID x 30'-0" S/S	
BOM, END VIEWS, DETAILS	
DWG NO.:	SHEET 2 OF 2
	3968-01
REV.	6