

COIL DESIGN NOTES

- DESIGN & FABRICATE TO ASME SECTION VIII, DIVISION 1, 2015 EDITION
- MAXIMUM ALLOWABLE WORKING PRESSURE
- INTERNAL MAINTENANCE
- MINIMUM DESIGN METAL TEMPERATURE (MDMT), -50° F AT 125 PSIG
- RADIATION NOTE FOR UHLE
- PAINT PERMITS MAY BE ADDED TO MATCH VESSEL CORROSION ALLOWANCE (INTERNAL), 1/16\"/>

GENERAL NOTES

- QUALITY CONTROL PROGRAM NUMBER, AQP-1522
- WELDING PROCEDURE REGISTRATION NUMBER, WP-3150.2
- CAPACITY, 2122 FT³
- EXPOSED SURFACES OF NOZZLES
- OR OPENINGS SHALL HAVE AN 1/8\"/>

DESIGN NOTES

- DESIGN & FABRICATE TO ASME SECTION VIII, DIVISION 1, 2015 EDITION
- MAXIMUM ALLOWABLE WORKING PRESSURE (MAWP), 125 PSIG
- DESIGN TEMPERATURE, 300° F
- MINIMUM DESIGN METAL TEMPERATURE (MDMT), -50° F AT 125 PSIG
- RADIATION NOTE FOR UHLE
- PAINT PERMITS MAY BE ADDED TO MATCH VESSEL CORROSION ALLOWANCE (INTERNAL), 1/16\"/>

CONNECTION SCHEDULE

WASER	SIZE	SCH	CLASS	TYPE	SERVICE	WELD	A	B	C	D	ITEM NOS
N1A	4"	XXH	150	RFPN	INLET	3, 4	3/8"	-	-	3/8"	4, 14, 13
N1B	4"	XXH	150	RFPN	GAS OUTLET	3, 4	3/8"	-	-	3/8"	4, 14, 10
N1C	2"	XXH	150	RFPN	COIL	3, 4	1/2"	-	-	1/2"	1, 11
N1D	1"	XXH	150	RFPN	PI	2, 4	3/8"	-	-	3/8"	6, 16
N1E	1"	XXH	150	RFPN	SOLIDS LG	2, 4	3/8"	-	-	3/8"	6, 16
N1F	1"	XXH	150	RFPN	LG / SPARGE	2, 4	3/8"	-	-	3/8"	6, 16
N1G	4"	XXH	150	RFPN	SOLIDS DRAIN	2, 4	5/8"	-	-	5/8"	4, 14
N1H	4"	XXH	150	RFPN	LIQUIDS DRAIN	2, 4	5/8"	-	-	5/8"	4, 14
N1I	3"	XXH	150	RFPN	LIQUID OUTLET	2, 4	3/8"	-	-	3/8"	15, 21
N1J	3"	XXH	150	RFPN	MATER LC	2, 4	3/8"	-	-	3/8"	8, 18
N1K	3"	XXH	150	RFPN	PSV	2, 4	3/8"	-	-	3/8"	8, 18
N1L	2"	XXH	150	RFPN	SPARGE	3, 4	1/2"	-	-	1/2"	1, 11
N1M	2"	XXH	150	RFPN	SPARGE	3, 4	1/2"	-	-	1/2"	1, 11
N1N	20"	STD	150	RFPN	MANWAY	1, 4	3/8"	-	-	3/8"	3, 11, 12, 20

Issued for Construction
Initial
 SH 1570-01

FABRICATION NOTES

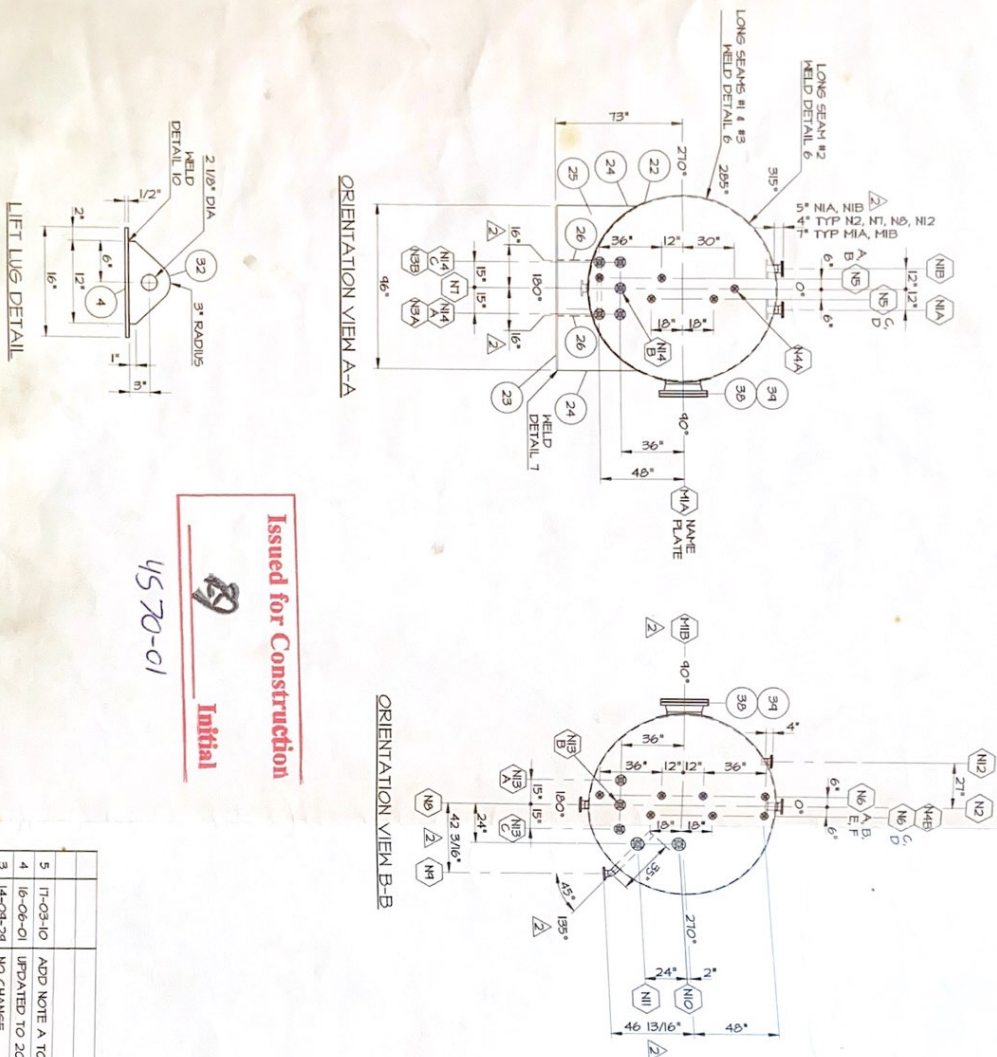
- MATERIAL SPECIFICATIONS MAY BE UPGRADDED AS FOLLOWS:
 WELD FITTING (B16.41), SA-234-WP9 TO SA-420-WPL6
 PIPE (B36.10), SA-53-B, ERN TO SA-106-B TO SA-335-GR 6
 FOREIGN (B16.5), SA-105N TO SA-350-LF2 CLASS 1

CORAL OILFIELD SERVICES INC.
 BOX 2160, 15309 - 44 STREET
 GRANDE PRANIE AB T6X 0L2
 TELEPHONE: (780) 682-9800 FAX: (780) 682-6666

REV	DATE	REVISION	BY	APP
5	11-03-10	ADD NOTE A, REVISE NOTE 12	3, 11	P.D., RJ
4	16-06-01	UPDATED TO 2015 CODE	3, 11	P.D., RJ
3	14-04-21	REVISE NO-1, NO-2, NO-3	3, 11	P.D., RJ
2	12-12-24	REVISE NOZZLE OUTSIDE PROUS	3, 11	P.D., RJ
1	12-10-10	REVISED, ISUED FOR APPROVAL	3, 11	P.D., RJ
0	12-10-04	ISSUED FOR APPROVAL	2, 11	P.D., RJ

CLIENT: SEPARATOR
 JOB NO.: 108" ID x 30'-0" S/S
 SCALE: NTS
 DRAWN BY: P.D., RJ
 CHECKED BY: RJ
 APP BY: RJ

DWG NO.: 3468-01
 SHEET 1 OF 2



Issued for Construction

Initial

4570-01

BILL OF MATERIALS

ITEM QTY	DESCRIPTION	NOTE A
1	HEADS - 108" ID x 5/8" THK (5007 MIN) 21.5L 2" SF	5A-108-B
2	FLATE - 108" ID x 1/2" THK x 10'-0" LG	5A-108-B
3	FLATE - 1/2" THK x 32" OD x 20 1/8" ID	5A-108-B
4	FLATE - 1/2" THK x 10' x 16" LG	5A-108-B
5	FLANGE - 1" CLASS 150 RFRM CM SCH XXI BORE N/A, NIB, N2	5A-108-B
6	FLANGE - 2" CLASS 150 RFRM CM SCH XXI BORE N/A, NIB, N2	5A-108-B
7	FLANGE - 3" CLASS 150 RFRM CM SCH XXI BORE N/A, NIB, N2	5A-108-B
8	FLANGE - 4" CLASS 150 RFRM CM SCH XXI BORE N/A, NIB, N2	5A-108-B
9	FLANGE - 6" CLASS 150 RFRM CM SCH XXI BORE N/A, NIB, N2	5A-108-B
10	FLANGE - 20" CLASS 150 RFRM CM SCH XXI BORE N/A, NIB, N2	5A-108-B
11	FLANGE - 20" CLASS 150 RFRM CM SCH XXI BORE N/A, NIB, N2	5A-108-B
12	FLANGE - 6" CLASS 150 RFRM CM SCH XXI BORE N/A, NIB, N2	5A-108-B
13	FLANGE - 6" CLASS 150 RFRM CM SCH XXI BORE N/A, NIB, N2	5A-108-B
14	FLANGE - 6" CLASS 150 RFRM CM SCH XXI BORE N/A, NIB, N2	5A-108-B
15	PIPE - 1" SCH XXI (3507) x CUT TO SMT	5A-108-B
16	PIPE - 2" SCH XXI (4507) x CUT TO SMT	5A-108-B
17	PIPE - 3" SCH XXI (6007) x CUT TO SMT	5A-108-B
18	PIPE - 4" SCH XXI (6747) x CUT TO SMT	5A-108-B
19	PIPE - 20" SCH XXI (16007) LR 45° WELD	5A-108-B
20	ELBOW - 3" SCH XXI (16007) LR 45° WELD	5A-108-B
21	FLATE - 3/8" THK x 16" x 128" LG NEAR FL ROLL-UP ID, NOTE 4	5A-108-B
22	FLATE - 1" THK x 12" x 48" LG	5A-36
23	FLATE - 3/8" THK x 12" x 48" LG	5A-36
24	FLATE - 3/8" THK x 48" x 96" LG	5A-36
25	FLATE - 3/8" THK x 12" x 18" LG	5A-36
26	FLANGE - 3" CLASS 150 RFRM CM SCH XXI BORE N/A, NIB, N2	5A-108-B
27	FLANGE - 2" CLASS 150 RFRM CM SCH XXI BORE N/A, NIB, N2	5A-108-B
28	FLANGE - 1" CLASS 150 RFRM CM SCH XXI BORE N/A, NIB, N2	5A-108-B
29	FLANGE - 1" CLASS 150 RFRM CM SCH XXI BORE N/A, NIB, N2	5A-108-B
30	FLANGE - 1" CLASS 150 RFRM CM SCH XXI BORE N/A, NIB, N2	5A-108-B
31	FLANGE - 1" CLASS 150 RFRM CM SCH XXI BORE N/A, NIB, N2	5A-108-B
32	FLATE - 1" THK x 6" x 12" LG	5A-36
33	FLATE - 3/8" THK x 107 1/8" OD x 54" HIGH	5A-36
34	FLATE - 3/8" THK x 107 1/8" OD x 54" HIGH	5A-36
35	STANDARD WAVE FLATE AND BRACKET	304 SS 5A-36
36	STANDARD 20" CLASS 150 HANWAY DAVIT	5A-36
37	GASKET - 20" CLASS 150 SPIRAL WOUND x 1/8" THK	5A-108-B
38	GASKET - 20" CLASS 150 SPIRAL WOUND x 1/8" THK	5A-108-B
39	STUDS - 1/8" DIA x 6 1/4" LG CM 2 NUTS EACH (5A-108-20) N/A, NIB	5A-108-B
40	STUDS - 1/8" DIA x 6 1/4" LG CM 2 NUTS EACH (5A-108-20) N/A, NIB	5A-108-B

REV	DATE	DESCRIPTION	BY	APP
5	17-03-10	ADD NOTE A TO BOM	RJ	
4	16-06-01	UPDATED TO 2015 CODE	RJ	
3	14-04-24	NO CHANGE	RJ	
2	12-12-24	REVISE DIMENSIONS AND ORIENT NIB, N1, N2	RJ	
1	12-10-10	REVISED, ISSUED FOR APPROVAL	RJ	
0	12-10-04	ISSUED FOR APPROVAL	RJ	

CORAL OILFIELD SERVICES INC.
 BOX 21060 15603 - 94 STREET 2
 GRANDE PRANSE, AB
 TELEPHONE: (780) 882-4600 FAX: (780) 882-4666

SEPARATOR
 108" ID x 30'-0" 5/5
 BOM, END VIEWS, DETAILS
 SHEET 2 OF 2
 3065-01
 REV. 5