

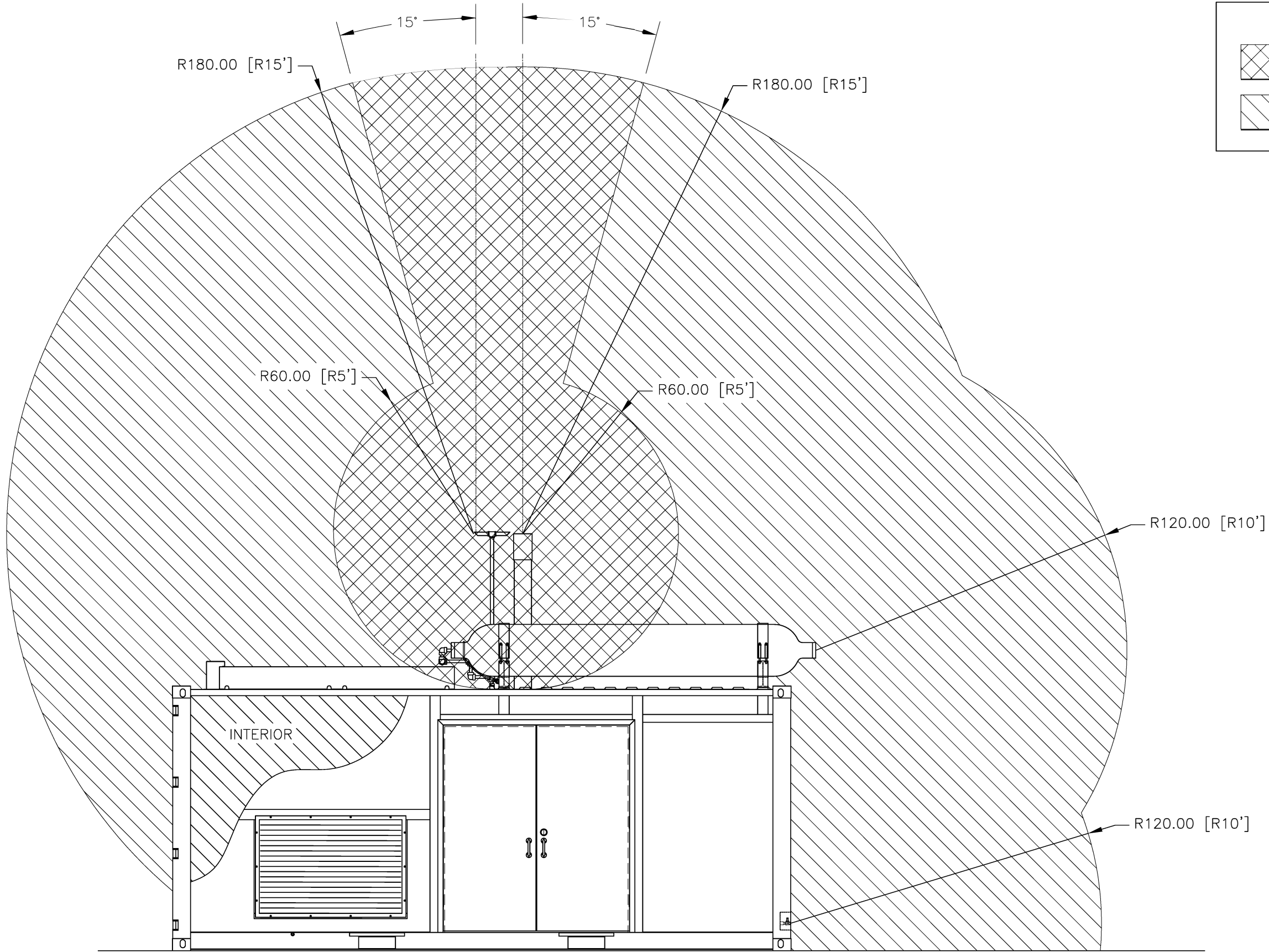


NOTES: UNLESS OTHERWISE SPECIFIED
 1. AREA CLASSIFICATIONS BASED ON NFPA 52 CHAPTER 8 TABLE 8.4.2.9.


0 04-23-12 JPK MKG
 INITIAL RELEASE
 A 07-26-12 JAM PFS
 ADDED SIDE VIEW ON NEW SHEET 3.
 UPDATED VENT LOCATIONS.
 UPDATED GEOMETRY FOR ALL VIEWS.
 ADDED INCH DIMENSIONS.
 ADDED BLOWDOWN VESSEL DRAIN VALVE CONNECTION.
 B 10-05-12 TLP MKG
 UPDATE FOR NEW SMALL VENT STACKS DESIGN.

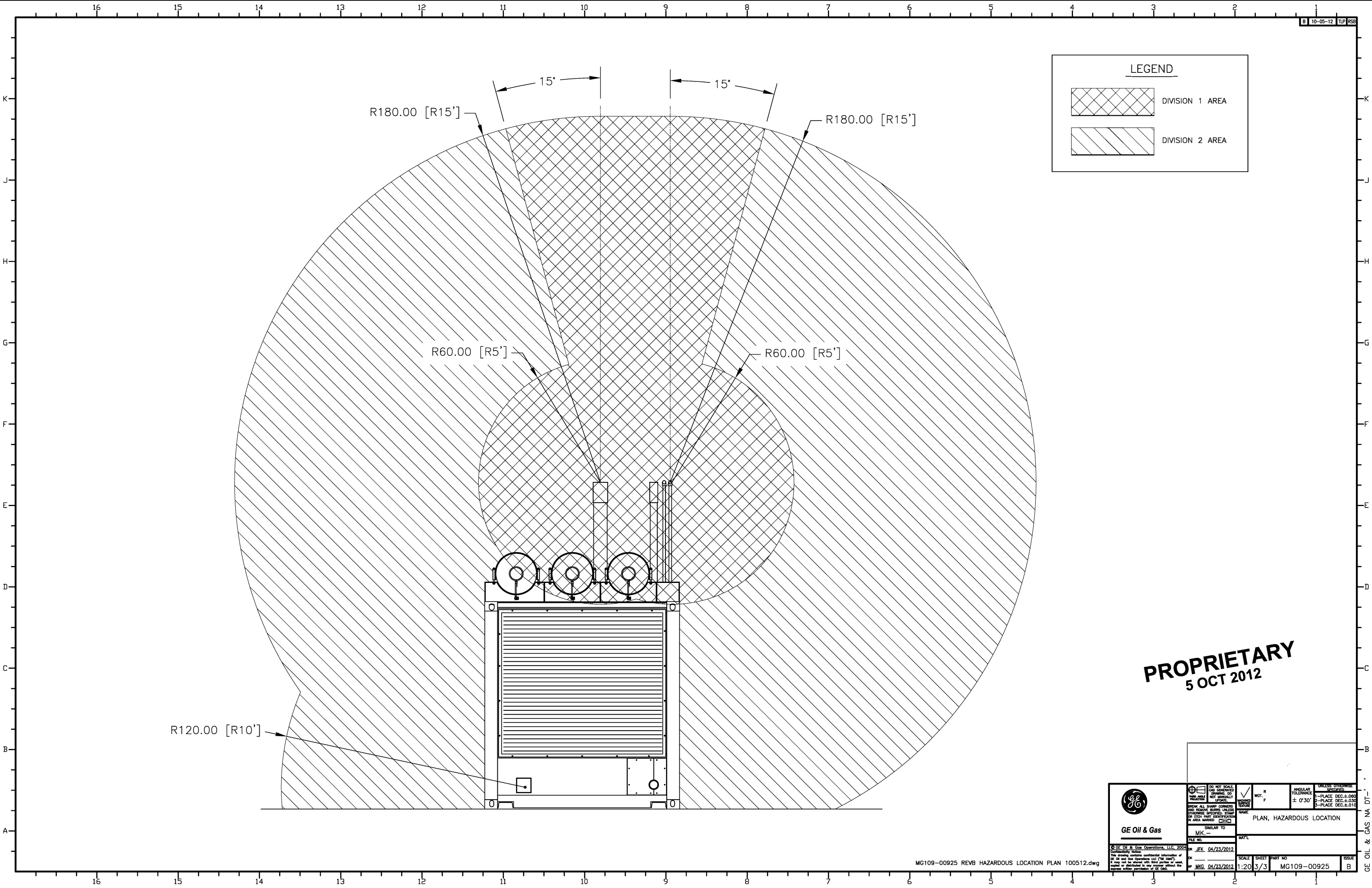
LEGEND

	DIVISION 1 AREA
	DIVISION 2 AREA



PROPRIETARY
 5 OCT 2012

	DO NOT SCALE DIM GENERATED BY CAD DO NOT MANUALLY MODIFY	WGT. R F	ANGULAR TOLERANCE ± 0'30"	UNLESS OTHERWISE SPECIFIED 1-PLACE DEC.±.060 2-PLACE DEC.±.030 3-PLACE DEC.±.010
	BREAK ALL SHARP CORNERS AND REMOVE BURRS UNLESS OTHERWISE SPECIFIED. STAMP OR EACH PART IDENTIFICATION IN AREA MARKED	NAME MK	PLAN, HAZARDOUS LOCATION	
GE Oil & Gas		SCALE SHEET PART NO 1:20 1/3 MG109-00925		
MG109-00925 REV B HAZARDOUS LOCATION PLAN 100512.dwg		ISSUE B		



LEGEND

	DIVISION 1 AREA
	DIVISION 2 AREA

PROPRIETARY
5 OCT 2012

 GE Oil & Gas	<small>DO NOT SCALE DIMENSIONS GENERATED BY CAD SOFTWARE SHOULD BE VERIFIED MANUALLY UNLESS OTHERWISE SPECIFIED</small>	<small>UNLESS OTHERWISE SPECIFIED</small> ANGULAR TOLERANCE ± 0°30' 1-PLACE DEC.±.060 2-PLACE DEC.±.030 3-PLACE DEC.±.010
	<small>BREAK ALL SHARP CORNERS AND REMOVE BURRS UNLESS OTHERWISE SPECIFIED. STAMP OR EACH PART IDENTIFICATION IN AREA MARKED</small>	NAME PLAN, HAZARDOUS LOCATION
<small>GE Oil & Gas Operations, LLC, 2004 Confidentiality Notice: The drawings contain confidential information of GE Oil & Gas Operations, LLC. This sheet is not to be shared with third parties or used, reproduced or distributed in any manner without the express written permission of GE Oil & Gas.</small>	SIMILAR TO MK - FILE NO. OR JFK, 04/23/2012 BY MKG, 04/23/2012	ISSUE B