

P&ID REVISION LOG

REV	SHT	DATE	DESCRIPTION	DR	AP
0	1-7	08-20-14	INITIAL RELEASE	DJM	MMG
0	4	08-25-14	UPDATED VOLTAGE	DJM	MMG

- NOTES: UNLESS OTHERWISE SPECIFIED
 1. REFER TO SHEET 2/7 FOR P&ID SYMBOLS LEGEND.
 2. * INDICATES EQUIPMENT NOT SUPPLIED BY GUILD OR GE.
 3. PIPE RUN #s USED:
 FIELD PIPING: F001-F009
 PROCESS (LARGE): 312-350, 354, 358-386 (EVEN #s), 569, 570.
 OIL (LARGE): 510-524, 526-532, 536-540 (EVEN #s)
 OIL (SMALL): 550-558, 560, 561, 564, 566-568,
 571-573, 575, 579-582, 584, 586-590.
 MISCELLANEOUS: 609-662, 644, 646, 648-662, 664, 666,
 668, 670, 672, 674, 676, 678, 680, 682.
 4. SOFTWARE INTERLOCK NUMBERS USED: 1100-1105, 1107-1141.
 5. MINIMUM WALL THICKNESS FOR PIPE & TUBE
 MUST CONFORM TO THESE TABLES:

MINIMUM PROCESS GAS PIPE WALL THICKNESS		
MATERIAL	SIZE	MIN ANSI SCHD
CARBON STEEL	<=1"	160
CARBON STEEL	>1"	80
CARBON STEEL	>=3"	40
CARBON STEEL	>=10"	STD
STAINLESS STEEL	<=1.5"	40
STAINLESS STEEL	>=2"	10


MINIMUM PROCESS GAS TUBE WALL THICKNESS		
MATERIAL	O.D.	MINIMUM WALL
STAINLESS STEEL	1/4"	0.035"
STAINLESS STEEL	3/8"	0.049"
STAINLESS STEEL	1/2"	0.065"
STAINLESS STEEL	3/4"	0.095"
STAINLESS STEEL	1"	0.109"

6. ALL ANSI FLANGES TO BE RF (RAISED FACE).
 7. ALL TUBE FITTINGS TO BE SWAGelok OR HY-LOK BRAND.
 8. REFER TO DRAWING M6109-00179 SPECIFICATIONS, PIPING & TUBING FOR
 DETAILS ON PIPE, TUBING, FLANGES, FITTINGS, AND HARDWARE.

P&ID DRAWING INDEX

SHT	REV	DESCRIPTION	FILENAME
01	0	COVER, INDEX, NOTES	M6129-00010 s001 REV0 P&ID Cover 082014.dwg
02	0	LEGEND	M6129-00010 s002 REV0 P&ID Legend 082014.dwg
03	0	DIAYER	M6129-00010 s003 REV0 P&ID Diayer 082014.dwg
04	0	STAGE 1 & 2	M6129-00010 s004 REV0 P&ID Stage1-2 082014.dwg
05	0	STAGE 3 & 4	M6129-00010 s005 REV0 P&ID Stage3-4 082014.dwg
06	0	STORAGE & DISPENSING	M6129-00010 s006 REV0 P&ID Storage 082014.dwg
07	0	COMPRESSOR LUBRICATION	M6129-00010 s007 REV0 P&ID Compr. Lube 082014.dwg

PROPRIETARY
 25 AUG 2014



GE Oil & Gas

SCALE SHEET FROM NO. NA 1/7 M6129-00010 A

COVER SHEET

P. & ID.

COVER SHEET

DATE: 08-20-14

SCALE: 1/4" = 1'-0"

PROJECT: M6129-00010

REV: 0

SHEET: 01 OF 07

M6129-00010 s001 REV0 P&ID Cover 082014.dwg

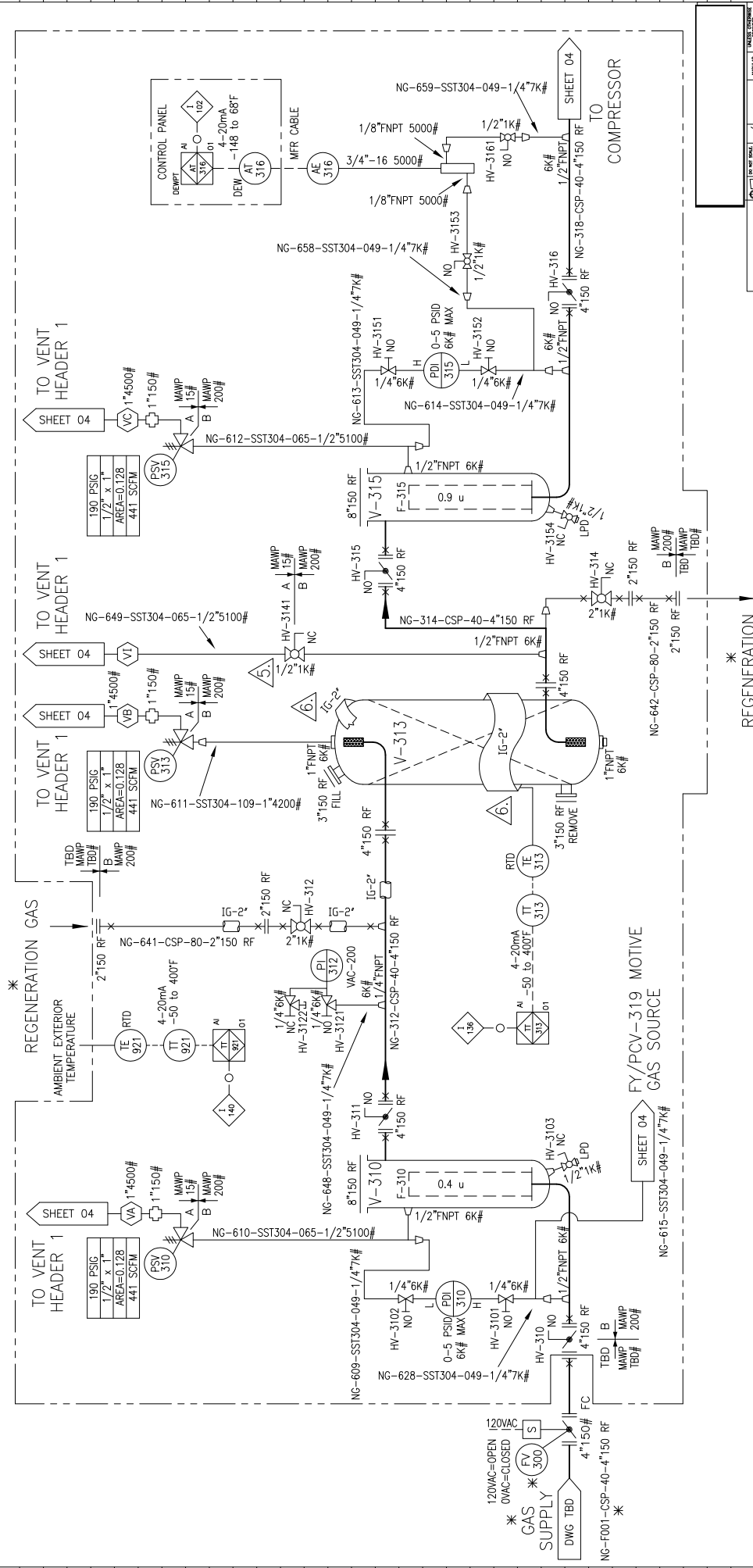
- NOTES: UNLESS OTHERWISE SPECIFIED
 1. REFER TO SHEET 2/7 FOR P&ID SYMBOLS LEGEND.
 2. * INDICATES EQUIPMENT NOT SUPPLIED BY GUILD OR GE.
 3. PIPE RUN #S USED: SEE SHT 1/7 NOTE 3.
 4. SOFTWARE INTERLOCK #S USED: SEE SHT 1/7 NOTE 4.
 5. THESE VALVE HANDLES MUST BE LOCKABLE OPEN OR CLOSED.
 6. V-313 INSULATION TO COVER THE TOP HEAD AND THE STRAIGHT SECTION ONLY.

**V310, V315
 INLET/OUTLET FILTERS**

CAPACITY: 14 GALLONS
 SIZE: 8.63" O.D. X 60"H
 WT: 156 LBS
 FLANGES: 4" 150 RF IN & OUT
 MAMP: 200 PSI @ 250°F
 MDMT: -20°F

**V313
 DESICCANT VESSEL**

CAPACITY: 309 GALLONS
 SIZE: 36" O.D. X 87"H
 WT: 4400 LBS (PACKAGE W/DESICCANT CHARGE)
 FLANGES: 4" 150 RF IN & OUT
 MAMP: 200 PSI @ 400°F
 MDMT: -20°F



GE Oil & Gas
 25 AUG 2014
 PROPRIETARY

SCALE: SHEET NO. NA 13/7 MCI79-00010
 MCI79-00010 sht03 REVA P&ID Dryer 082514.dwg

REGENERATION GAS OUTLET

FY/PCV-319 MOTIVE GAS SOURCE

TO VENT HEADER 1

TO VENT HEADER 1

TO VENT HEADER 1

TO COMPRESSOR

- NOTES: UNLESS OTHERWISE SPECIFIED
1. REFER TO SHEET 2/7 FOR P&ID SYMBOLS LEGEND.
 2. * INDICATES EQUIPMENT NOT SUPPLIED BY CHILD OR GE.
 3. PIPE RUN #s USED: SEE SHT 1/7 NOTE 3.
 4. SOFTWARE INTERLOCK #s USED: SEE SHT 1/7 NOTE 4.
- △ THESE VALVE HANDLES MUST BE LOCKABLE OPEN OR CLOSED.

THROW 2&4 CYLINDERS
 #2&4 CE: 3.00" DIAMETER
 MAMP: 2500 PSIG @350°F
 #2&4 HE: 1.50" DIAMETER
 MAMP: 6000 PSIG @350°F
 MDMT: -4°F

HX-340 (CORE 2) GAS COOLER
 MFR: CUSTOM AIR COOLER
 MODEL: FORCED DRAFT (CUSTOM)
 MAMP(1): 2150 PSIG @350°F
 MAMP(2): 1150 PSIG @350°F
 MDMT(1): -20°F
 MDMT(2): -20°F
 APPROACH: 20°F @950 SCFM, 3300 FT

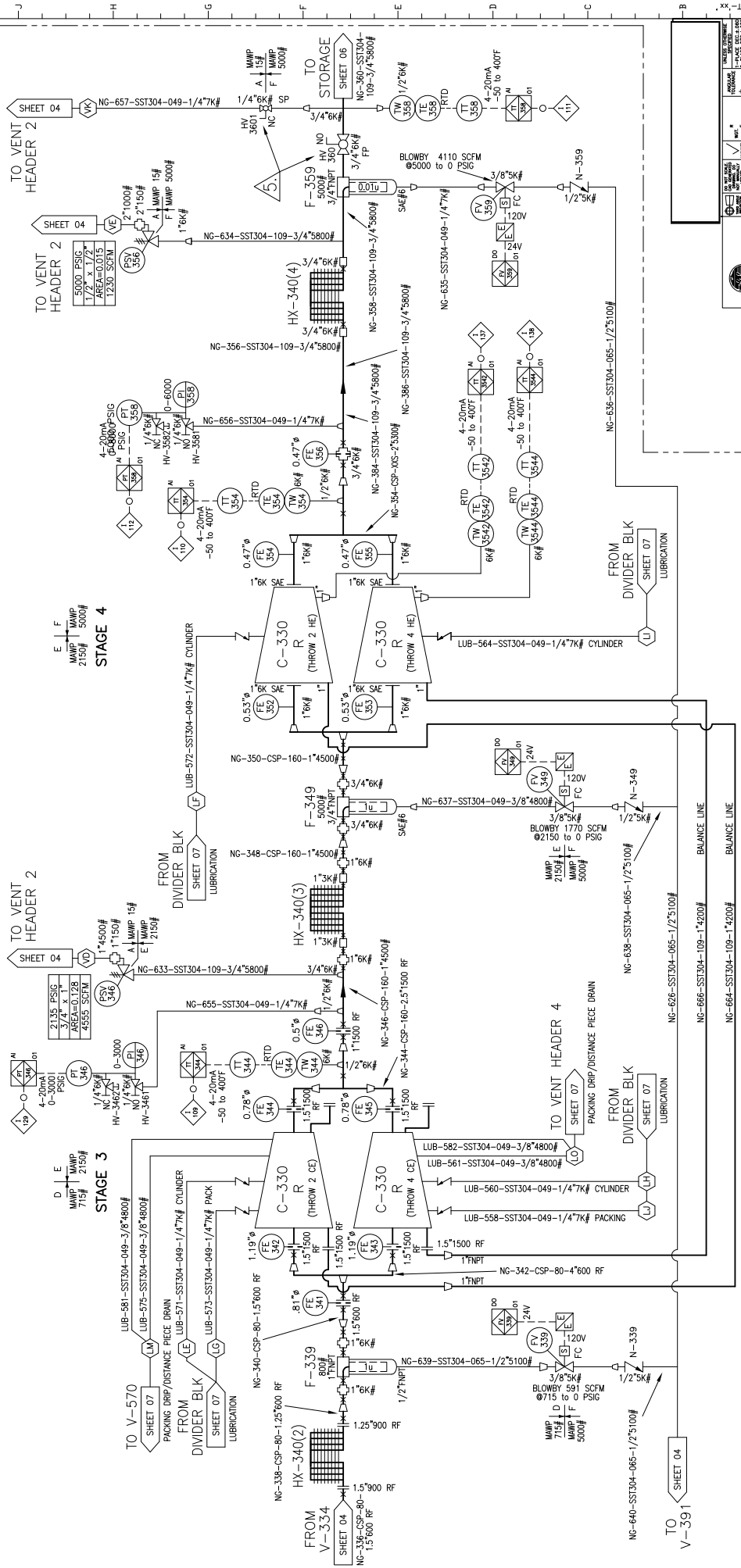
HX-340 (CORE 3) GAS COOLER
 MFR: CUSTOM AIR COOLER
 MODEL: FORCED DRAFT (CUSTOM)
 MAMP(1): 2150 PSIG @350°F
 MAMP(2): 1150 PSIG @350°F
 MDMT(1): -20°F
 MDMT(2): -20°F
 APPROACH: 20°F @950 SCFM, 3300 FT

HX-340 (CORE 4) GAS COOLER
 MFR: CUSTOM AIR COOLER
 MODEL: FORCED DRAFT (CUSTOM)
 MAMP(1): 2150 PSIG @350°F
 MAMP(2): 1150 PSIG @350°F
 MDMT(1): -20°F
 MDMT(2): -20°F
 APPROACH: 20°F @950 SCFM, 3300 FT

F-339 FILTER
 MFR: PARKER
 MODEL: MMS-100N
 MAMP: 5000 PSIG
 MDMT: -40°F
 DIFF P: 0.5 PSID @1760 PSIG, 130°F, 950 SCFM
 CONNECTIONS: 1/2" FNPT (06848)

F-349 FILTER
 MFR: PARKER
 MODEL: MMS-100N
 MAMP: 5000 PSIG
 MDMT: -40°F
 DIFF P: 0.5 PSID @1760 PSIG, 130°F, 950 SCFM
 CONNECTIONS: 1/2" FNPT (06848)

F-359 FILTER
 MFR: PARKER
 MODEL: JN3B-4CN
 MAMP: 5000 PSIG
 MDMT: -40°F
 DIFF P: 1.4 PSID @4700 PSIG, 130°F, 950 SCFM
 CONNECTIONS: 3/4" FNPT (06848)



PROPRIETARY
 25 AUG 2014

MC129-00010 en05 REV A P&ID Stage3-4 082514.dwg

GE Oil & Gas

COMPRESSOR STAGES #3 & 4

SCALE SHEET P&ID NA 15/71 MC129-00010 A

DATE: 08/25/14

DESIGNED BY: [Name]

CHECKED BY: [Name]

APPROVED BY: [Name]

PROJECT: [Name]

UNIT: [Name]

LOCATION: [Name]

SCALE: [Name]

DATE: 08/25/14

DESIGNED BY: [Name]

CHECKED BY: [Name]

APPROVED BY: [Name]

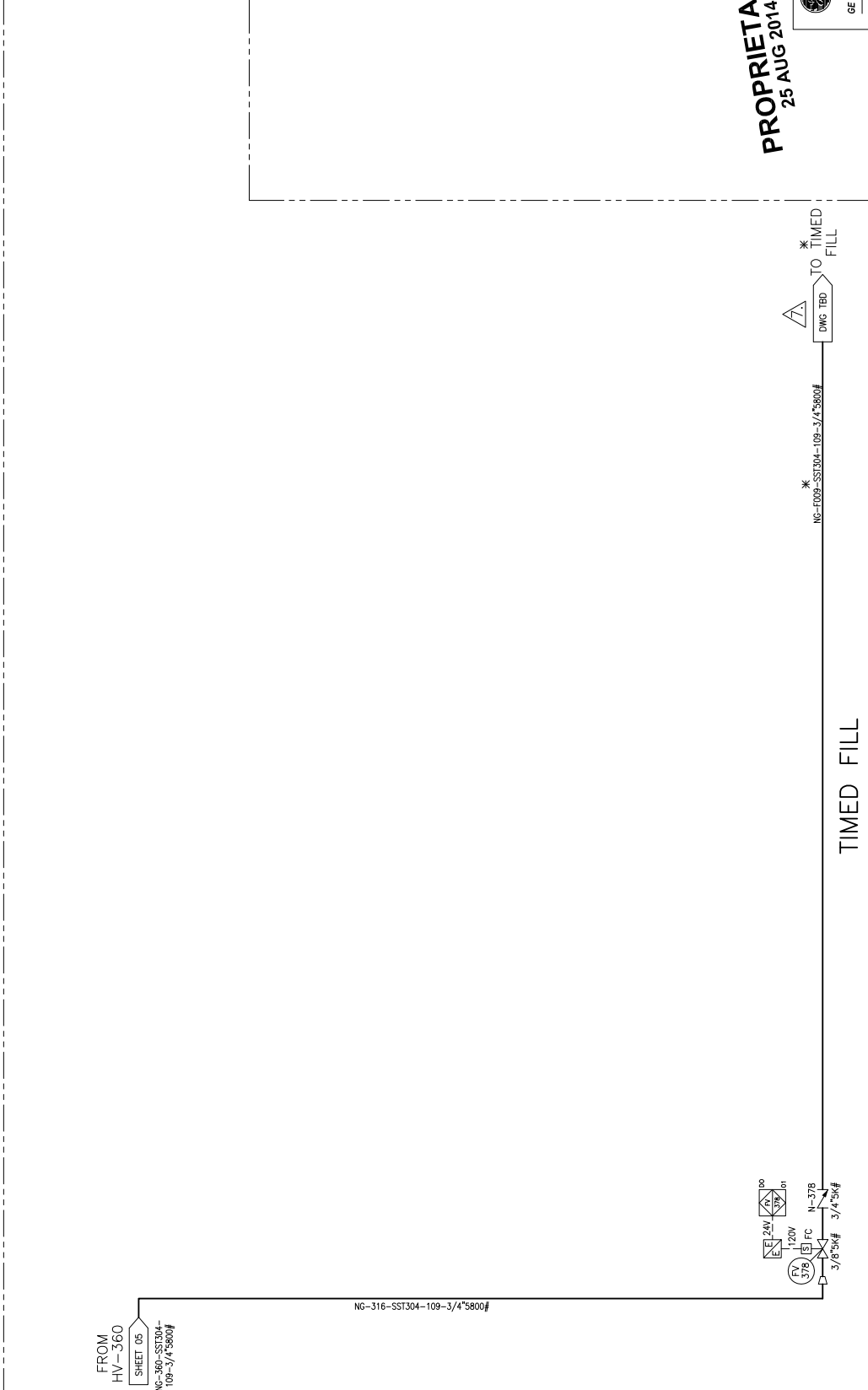
PROJECT: [Name]

UNIT: [Name]

LOCATION: [Name]

SCALE: [Name]

- NOTES: UNLESS OTHERWISE SPECIFIED
1. REFER TO SHEET 2/7 FOR P&ID SYMBOLS LEGEND.
 2. * INDICATES EQUIPMENT NOT SUPPLIED BY GILDOR OR GE.
 3. PIPE RUN #s USED: SEE SHT. 1/7 NOTE 3.
 4. SOFTWARE INTERLOCK #s USED: SEE SHT. 1/7 NOTE 4.
 5. THESE VALVE HANDLES MUST BE LOCKABLE OPEN OR CLOSED.
- CAUTION**
 ANY CONNECTION OF THE CNG IN A BOX TO A SLOW FILL SYSTEM MUST COMPLY WITH ALL APPLICABLE NFPA REQUIREMENTS, INCLUDING NFPA 70 and 52, AND OTHER APPLICABLE CODES. CUSTOMER IS SOLELY RESPONSIBLE FOR REVIEWING AND COMPLYING WITH ALL MANUFACTURER'S OR SUPPLIER'S INSTALLATION INSTRUCTIONS, SELECTING COMPATIBLE EQUIPMENT AND PROPER INSTALLATION. CUSTOMER IS SOLELY RESPONSIBLE FOR ANY LOSSES, DAMAGES, OR CLAIMS RESULTING FROM A SLOW FILL CONNECTION OR FAILURE TO PROPERLY INSTALL A SLOW FILL CONNECTION.
 WARNING
 FAILURE TO FOLLOW THE DIRECTIONS ABOVE COULD CAUSE A FIRE OR EXPLOSION, RESULTING IN SERIOUS BODILY INJURY OR DEATH OR PROPERTY DAMAGE. PLEASE CONSULT GE OIL AND GAS AT +1 832 978 9780 OR hsr_support@ge.com OR cmrmonitor_support@ge.com IF YOU HAVE QUESTIONS.



PROPRIETARY
 25 AUG 2014

GE Oil & Gas

SCALE: SHEET PRINT NO. NA 16/77 MCI29-00010 A

PROJECT: MCI29-00010

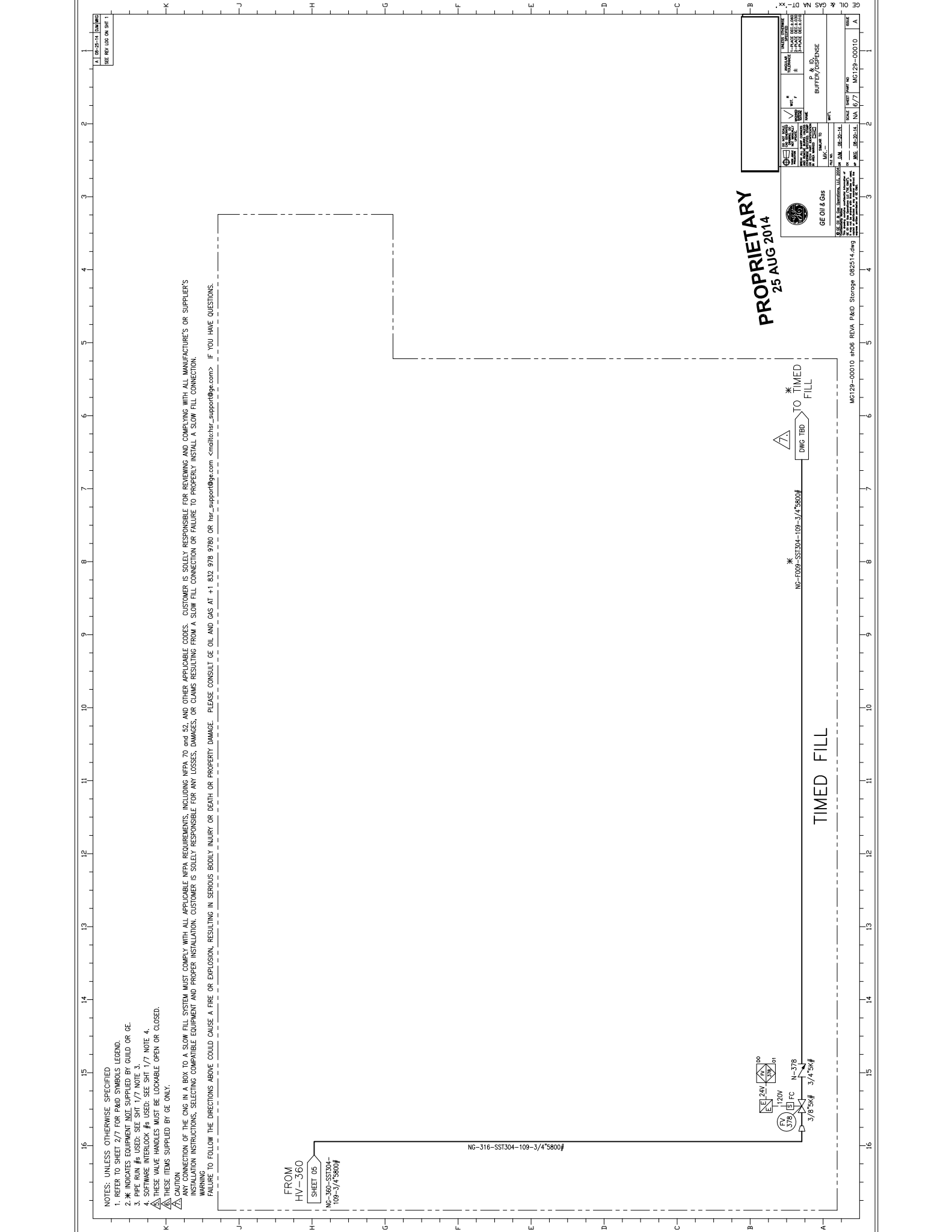
DATE: 08/25/14

SCALE: 1/8" = 1'-0"

PROJECT: MCI29-00010

DATE: 08/25/14

SCALE: 1/8" = 1'-0"



NOTES: UNLESS OTHERWISE SPECIFIED
 1. REFER TO SHEET 2/7 FOR PAID SYMBOLS LEGEND.
 2. * INDICATES EQUIPMENT NOT SUPPLIED BY GILD OR GE.
 3. PPE RUN #S USED: SEE SHIT 1/7 NOTE 3.
 4. SOFTWARE INTERLOCK #S USED: SEE SHIT 1/7 NOTE 4.
 5. SUPPLIED BY GILD, SHIPPED LOOSE FOR FIELD INSTALLATION BY OTHERS.

M-330 MOTOR
 MFR: GENERAL ELECTRIC
 MODEL: 56C31440230
 FLOR: 4.0 GPM @ 50 PSIG
 SPEED: 1800 RPM @ 60 HZ
 FRAME: 5011
 WT: 5500 LBS

P-511 PRELUBE PUMP
 MFR: VIKING
 MODEL: 10-60V-M
 FLOR: 4.0 GPM @ 50 PSIG
 DRIVE: M-511 3/4 HP
 DRIVE: COUPLED TO COMP

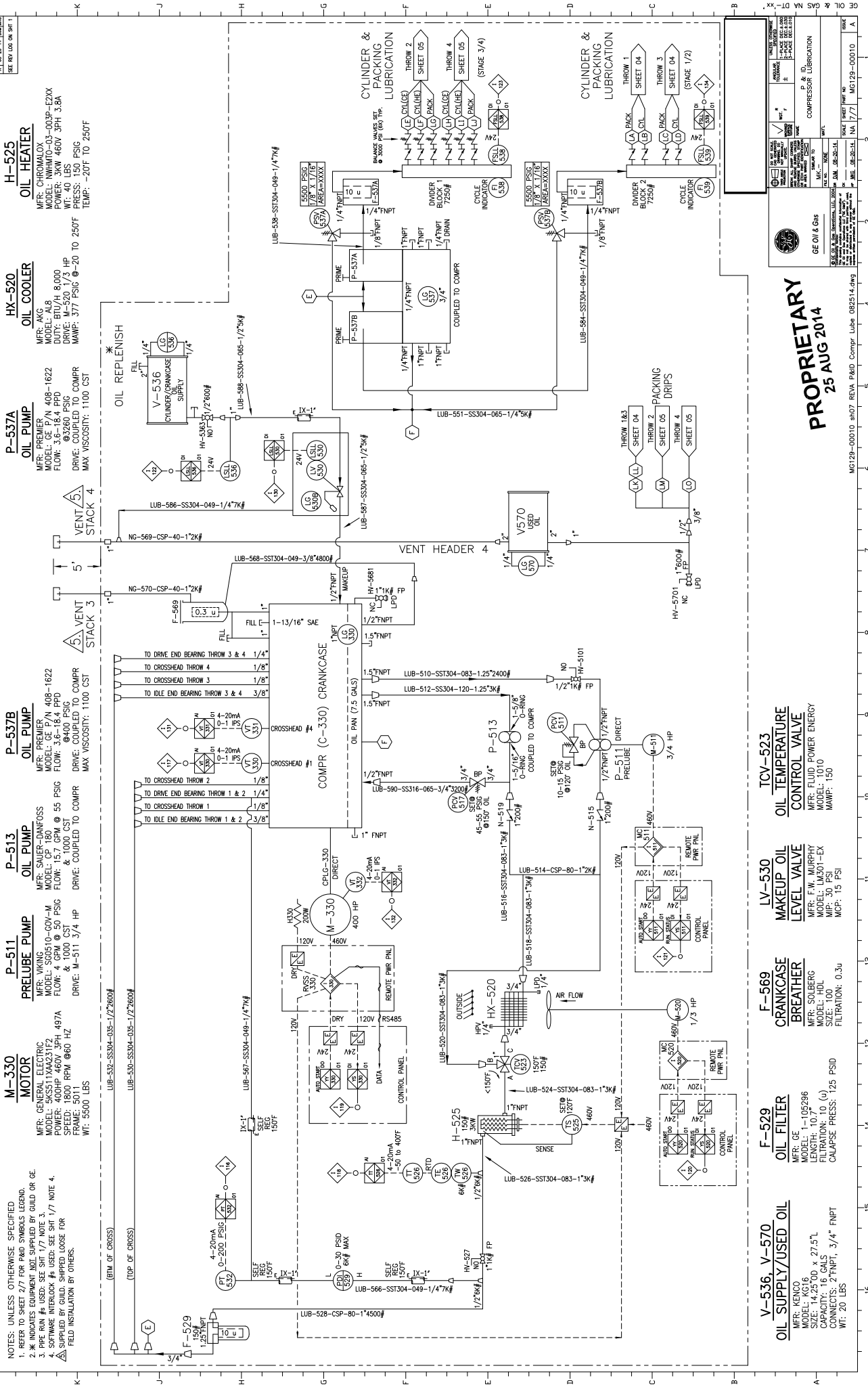
P-513 OIL PUMP
 MFR: SAUER-DANFOSS
 MODEL: GE-16A PPD
 FLOR: 15.7 GPM @ 55 PSIG
 DRIVE: M-513 3/4 HP
 DRIVE: COUPLED TO COMP

P-537B OIL PUMP
 MFR: PREMIER
 MODEL: GE-16A PPD
 FLOR: 3.0 GPM @ 55 PSIG
 DRIVE: M-537B 1/2 HP
 DRIVE: COUPLED TO COMP

P-537A OIL PUMP
 MFR: PREMIER
 MODEL: GE-16A PPD
 FLOR: 3.0 GPM @ 55 PSIG
 DRIVE: M-537A 1/2 HP
 DRIVE: COUPLED TO COMP

HX-520 OIL COOLER
 MFR: AKG
 MODEL: 408-1622
 DUTY: RTU/4 8,000
 DRIVE: M-520 1/3 HP
 MAMP: 377 PSIG @ -20 TO 250FT
 TEMP: -20FT TO 250FT

H-525 OIL HEATER
 MFR: CHROMALOX
 MODEL: NHM100-03-003P-E2XX
 POWER: 460V 3PH 3.5A
 WT: 40 LBS
 PRESS: 150 PSIG
 TEMP: -20FT TO 250FT



PROPRIETARY
25 AUG 2014

GE Oil & Gas

COMPRESSOR LUBRICATION

SCALE: SHEET 1 OF 1
 DATE: 08/25/14
 PROJECT: M-520-1/3 HP
 DRAWING: LUB-525-1/3 HP

V-536, V-570 OIL SUPPLY/USED OIL
 MFR: KENCO
 MODEL: 1-105296
 LENGTH: 10.7'
 FILTRATION: 10 (u)
 CAPACITY: 16 GALS
 CONNECTS: 2" FNPT, 3/4" FNPT
 WT: 20 LBS

F-529 OIL FILTER
 MFR: GE
 MODEL: 1-105296
 LENGTH: 10.7'
 FILTRATION: 10 (u)
 CALAPSE PRESS: 125 PSID

F-569 CRANKCASE BREATHER
 MFR: SOLBERG
 MODEL: HBL
 SIZE: 100
 FILTRATION: 0.3u

LV-530 MAKEUP OIL LEVEL VALVE
 MFR: F.W. MURPHY
 MODEL: LM301-EX
 MIP: 30 PSI
 MCP: 15 PSI

TCV-523 OIL TEMPERATURE CONTROL VALVE
 MFR: FLUID POWER ENERGY
 MODEL: LM301-EX
 MAMP: 150