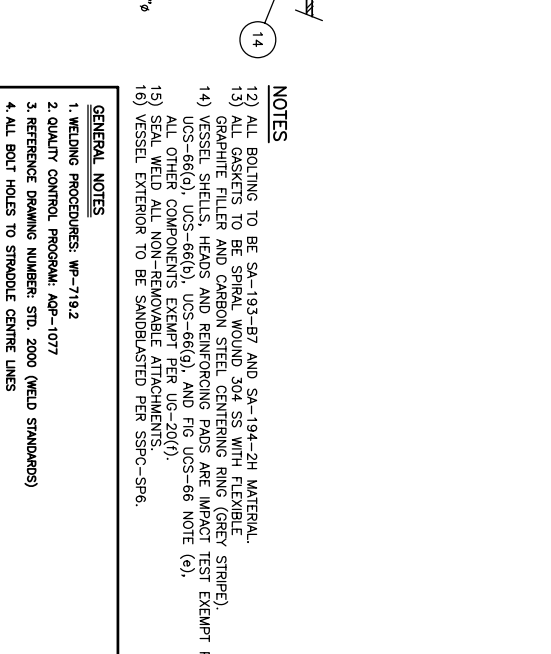
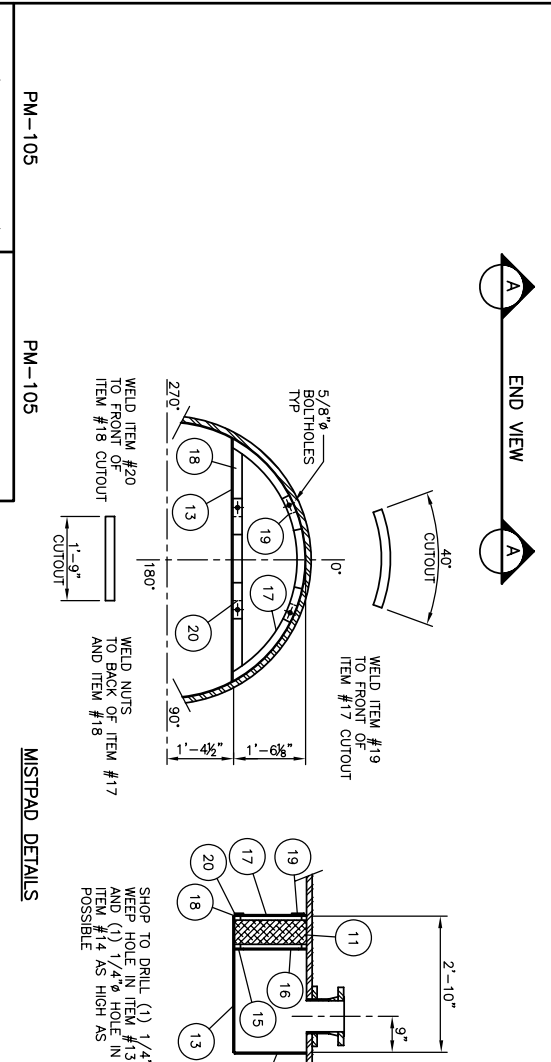
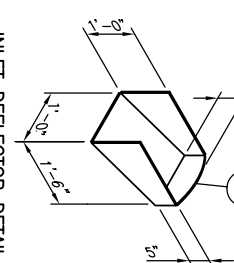
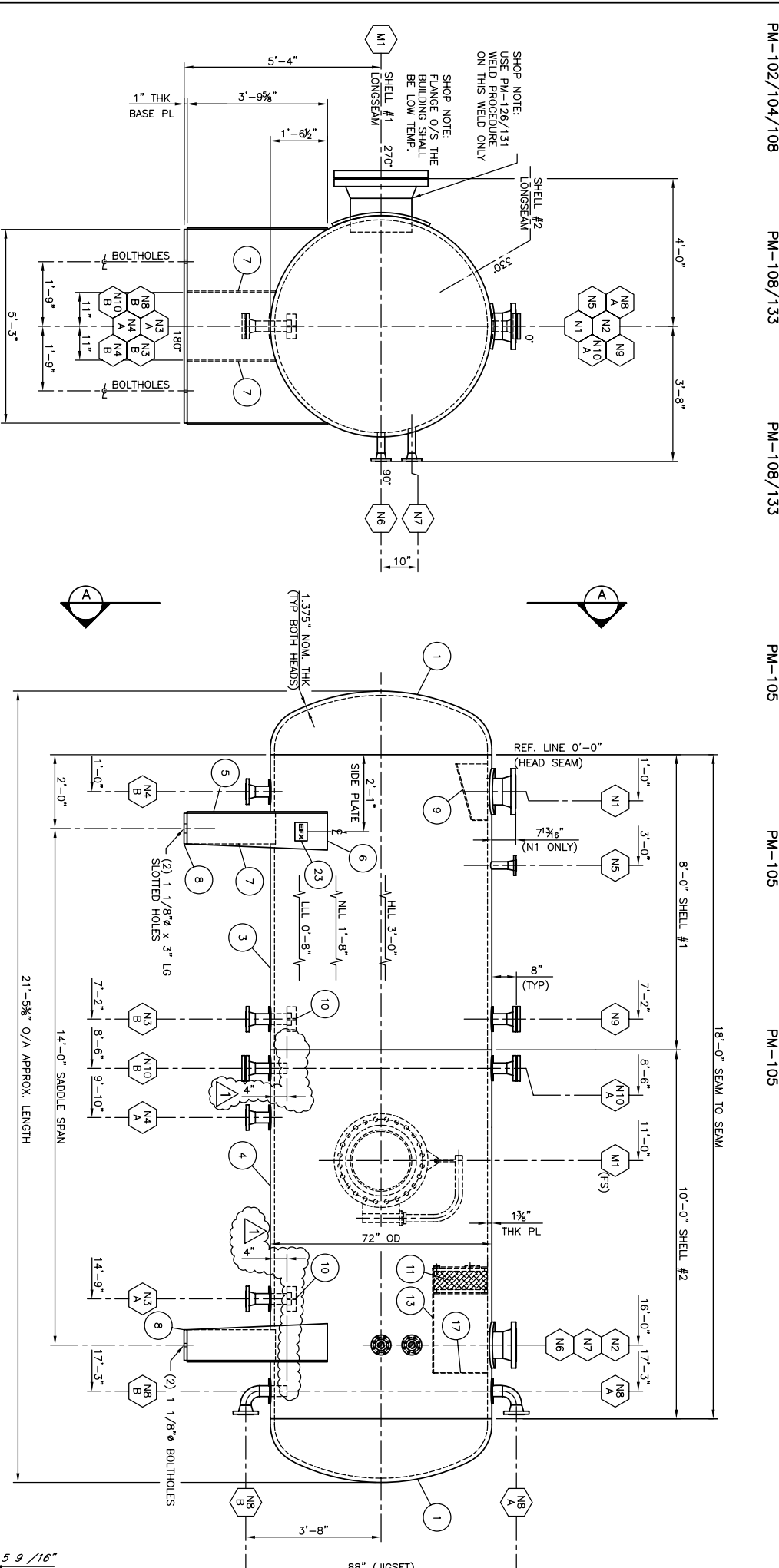


MARK	PART	DESCRIPTION	QTY	MATERIAL	WELD SYM
M1	MAWAV	20" 300# SCH XH RWN FLG	1	SA-350LF2	J4-1
	REPAID	35" OD x 1" PL x 11" LG	1	SA-51670N	
		20" 300# RF BLIND FLANGE	1	SA-350LF2	J4-1
		20" 300# RF x 1/8" THK GASKET	1	NOTE #13	
		1 1/4" x 8 1/4" LG STUDS c/w (2) NUTS EACH	24	NOTE #12	

**BILL OF MATERIALS**

MARK	PART	DESCRIPTION	QTY	MATERIAL	WELD SYM
1	HEADS	72" OD x 1 3/8" NOM. THK 2:1 SE HEAD c/w 2" SF (HOT FORMED)	2	SA-51670N	K2-2
3	SHELL #1	72" OD x 1 3/8" PL x 8'-0" LG	1	SA-51670N	K2-1/K2-2
4	SHELL #2	72" OD x 1 3/8" PL x 10'-0" LG	2	SA-51670N	K2-1/K2-2
5	FACE PLATE	10'-7 1/2" x 1 1/2" PL x 3'-9 5/8" LG	2	SAC40.2144W	
6	SIDE PLATE	10'-7 1/2" x 1 1/2" PL x 3'-9 5/8" LG	4	SAC40.2144W	
7	SADDLE SPLITFENER	10" x 1 1/2" PL x 2'-4 3/4" LG	4	SAC40.2144W	
8	BASE PLATE	10" x 1" PL x 5'-3" LG	2	SAC40.2144W	
9	INLET DEFLECTOR	12" x 12" x 18" x 5 9/16" x 3/8" PL (SEE DETAIL)	1	SAC40.2144W	
10	VORTEX BREAKER	3" x 3/8" FB x 8" LG (FORM CROSS)	1	SAC40.2144W	
11	MISTPAD	69" OD x 6" THK x 12 1/2" MISTEX x 18" HIGH (5)	1	304SS	
13	MP SUPPORT	2'-10" x 3/8" PL x 5'-0" 7/8" WIDE	1	SAC40.2144W	
14	MP SUPPORT	69 1/8" OD x 3/8" PL x 18" HIGH	1	SAC40.2144W	
15	MP SUPPORT	2" x 3/8" PL x 4'-5 5/8" LG	1	SAC40.2144W	
16	MP SUPPORT	69 1/8" OD x 3/8" PL x 65 1/8" ID x 18 1/8" HIGH	1	SAC40.2144W	
17	MP SUPPORT	69 1/8" OD x 3/8" PL x 65 1/8" ID x 18 1/8" HIGH	1	SAC40.2144W	
18	MP SUPPORT	2" x 3/8" PL x 4'-5 5/8" LG	1	SAC40.2144W	
19	MP SUPPORT	69 1/8" OD x 3/8" PL x 65 1/8" ID x 6" LG	2	SAC40.2144W	
20	MP SUPPORT	2" x 3/8" PL x 6" LG	2	SAC40.2144W	
21	BOLTING	1/2" x 1 1/2" LG CAPSCREWS c/w (1) NUT EACH	4	CS	
22	DAWT	STANDARD DAWT FOR 20" 300# RF BLIND FLG	1	SA-106B	
23	NAME PLATE	STANDARD NAME PLATE c/w "T" BRACKET	1	SAC40.2150W	



**NOTES**

- ALL BOLTING TO BE SA-193-87 AND SA-194-2H MATERIAL.
- ALL GASKETS TO BE SPIRAL WOUND 304 SS WITH FLEXIBLE GRAPHITE FILLER AND CARBON STEEL CENTRING RING (GREY STRIPE).
- VESSEL SHELLS, HEADS AND REINFORCING PADS ARE IMPACT TEST EXEMPT PER UCS-66(g), UCS-66(i), UCS-66(j), AND FIG UCS-66 NOTE (e).
- ALL OTHER COMPONENTS EXEMPT PER UCS-20(f).
- SEAL WELD ALL NON-REMOVABLE ATTACHMENTS.
- VESSEL EXTERIOR TO BE SANDBLASTED PER SSPC-SP6.
- INSULATION : NONE
- WELDING PROCEDURES: WP-719.2
- QUALITY CONTROL PROGRAM: AQP-1077
- REFERENCE DRAWING NUMBER: STD. 2000 (WELD STANDARDS)
- ALL BOLT HOLES TO STRADDLE CENTRE LINES
- SERIAL NUMBER: E7122-20
6. SERVICE: SWEET
7. LONG SEAM WPS: PM-102/104/108 ORG. SEAM WPS: PM-104/108
- NOZZLE TO FLG WPS: PM-108/133 OTHER WELD WPS: PM-105
8. PRE-HEAT TO: 200°F (93°C) MIN. IMPACT TESTS: SEE NOTE #14
9. SURFACE PREP. INT.: NONE EXT.: SEE NOTES #16 & #17
10. SURFACE FINISH EXT.: SEE NOTE #18
11. INSULATION : NONE

**DESIGN DATA**

CODE ASME SECTION VIII, DIV. 1, 2001 EDITION A-03 ADDENDA

DESIGN PRESS. 700 PSIG (4826 kPaq) DESIGN TEMP. 150 °F (66 °C)

MIN. DESIGN METAL TEMP. -20 °F (-29 °C) 4826 kPaq

M.A.W.P. MAX. TEMP. PSIG °F °C

M.A.W.P. NEW & COLD PSIG °F °C

HYDROSTATIC TEST PRESSURE 910 PSIG (6274 kPaq)

CORROSION ALLOW. 0.0625" (1.6 mm) P.W.H.T. NONE

RADIOGRAPHY FULL PER RT-1

HEAD THK NOM. 1.375" (34.9 mm) MIN. 1.284" (32.6 mm)

SHELL THK NOM. 1.375" (34.9 mm) MIN. 1.375" (34.9 mm)

VOLUME 529.5 cu. ft. (14.9 cu. m)

WEIGHT EMPTY 31150 lbs (14130 kg)

WEIGHT FULL OF WATER 63930 lbs (29000 kg)

**GENERAL NOTES**

12) ALL BOLTING TO BE SA-193-87 AND SA-194-2H MATERIAL.

13) ALL GASKETS TO BE SPIRAL WOUND 304 SS WITH FLEXIBLE GRAPHITE FILLER AND CARBON STEEL CENTRING RING (GREY STRIPE).

14) VESSEL SHELLS, HEADS AND REINFORCING PADS ARE IMPACT TEST EXEMPT PER UCS-66(g), UCS-66(i), UCS-66(j), AND FIG UCS-66 NOTE (e).
- ALL OTHER COMPONENTS EXEMPT PER UCS-20(f).
- SEAL WELD ALL NON-REMOVABLE ATTACHMENTS.
- VESSEL EXTERIOR TO BE SANDBLASTED PER SSPC-SP6.
- INSULATION : NONE
- WELDING PROCEDURES: WP-719.2
- QUALITY CONTROL PROGRAM: AQP-1077
- REFERENCE DRAWING NUMBER: STD. 2000 (WELD STANDARDS)
- ALL BOLT HOLES TO STRADDLE CENTRE LINES
- SERIAL NUMBER: E7122-20
- 6. SERVICE: SWEET
- 7. LONG SEAM WPS: PM-102/104/108 ORG. SEAM WPS: PM-104/108
- NOZZLE TO FLG WPS: PM-108/133 OTHER WELD WPS: PM-105
- 8. PRE-HEAT TO: 200°F (93°C) MIN. IMPACT TESTS: SEE NOTE #14
- 9. SURFACE PREP. INT.: NONE EXT.: SEE NOTES #16 & #17
- 10. SURFACE FINISH EXT.: SEE NOTE #18
- 11. INSULATION : NONE

**CUSTOMER** BLIZZARD ENERGY INC. c/o SIGMA 3

**PROJECT** SOUSA COMPRESSION & DEHYDRATION FACILITY

**DATE** 04/09/29

**SCALE** 1/2"=1'-0"

**APPROVED** [Signature]

**DATE** 04/09/29

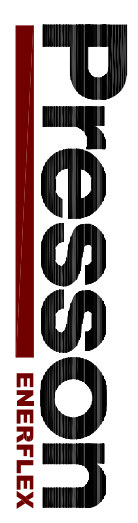
**ISSUED FOR APPROVAL** [Signature]

**DATE** 04/10/15

**ISSUED FOR CONSTRUCTION** [Signature]

**DATE** 04/11/03

**WELDING PROCEDURES WERE J3-1 FOR N3, N8 & N10B/ADDED DIM.**



**TITLE**

HORIZONTAL INLET SEPARATOR (V-1100)

72" OD x 18'-0" S/S x 700 PSIG @ 150°F

1829 mm OD x 5486 mm S/S x 4826 kPaq @ 66°C