

PANEL ASSEMBLY, CONTROL

10/4/2012

DWG ITEM NUMBER	QTY PER ASSY	UOM	MANUFACTURER	PRIMARY PART #	TAG NAME	DESCRIPTION	MATERIAL
1	1	EA	AUSTIN	48228SLLmod		ENCLOSURE, NEMA4, 48 X 22 X 8	STEEL
2	1	EA	AUSTIN	4822TPmod revB		SUBPANEL, 45" X 19"	STEEL
3	6	FT	PANDUIT	F2X3LG6-A		WIRING DUCT, 2 X 3, NARROW FINGER, ADHESIVE BACKED	PVC
4	6	FT	PANDUIT	C2LG6		COVER, WIRING DUCT, 2"	PVC
5	6	FT	PANDUIT	F1X4LG6-A		WIRING DUCT, 1 X 4, NARROW FINGER, ADHESIVE BACKED	PVC
6	6	FT	PANDUIT	F1X3LG6-A		WIRING DUCT, 1 X 3, NARROW FINGER, ADHESIVE BACKED	PVC
7	16	FT	PANDUIT	C1LG6		COVER, WIRING DUCT, 1"	PVC
8	3	FT	ALTECH	2511120/1M		DIN RAIL, 35 X 7.5 mm	STEEL
9	15	EA	MCMASTER	95345A566		SCREW, #10-32 X 1/2" LG, W/EXT TOOTH LOCK WASHER	18-8 SS
10	4	EA	MCMASTER	96278A411		NUT, #10-32, W/TOOTH LOCK WASHER	18-8 SS
11	1	EA	ALLEN BRADLEY	1769-L30ER	PLC-921	CPU, 1M FLASH MEMORY, DUAL ETHERNET	
12	1	EA	ALLEN BRADLEY	1769-PA2	PWS-921	POWER SUPPLY, 85-132 V OR 170 - 265 V AC, 5VDC@2A OUT	
13	2	EA	ALLEN BRADLEY	1769-IF16C	AI-921	MODULE, ANALOG IN, 4-20 mA, 16 CH	
14	1	EA	ALLEN BRADLEY	1769-IQ16	DI-921	MODULE, DISCRETE INPUT, 16 CH, 10-32VDC	
15	2	EA	ALLEN BRADLEY	1769-OB16P	DO-921	MODULE, DISCRETE OUT, 10-31 VDC, ELEC FUSE, 16 CH	
16	1	EA	ALLEN BRADLEY	1769-ECR		RIGHT END CAP/TERMINATOR	
17	1	EA	ALLEN BRADLEY	800H-FRXT6D2P	ESD-901	SWITCH, E-STOP, SEALED CONTACT, NC, TWIST RELEASE, RED, CLASS 1 DIV 2	
18	1	EA	ALLEN BRADLEY	800T-X646EM		LEGEND, ESTOP, YELLOW RING, 30mm	
19	1	EA	ALLEN BRADLEY	800H-HR2D1P	HS-921	SWITCH, LEVER, SEALED CONTACT, NO, CLASS 1 DIV 2	
20	1	EA	MCMASTER	65575K96 (OFF LIGHTS ON)		LEGEND, OFF LIGHTS ON, 30 MM PUSHBUTTON	
21	1	EA	BEIJER	QTERM-A7/3654R	HMI-921	OPERATOR INTERFACE, COLOR TFT LCD, 7INCH, 24VDC, -30 TO 70 DEGC	
22	1	EA	SIXNET	SLX-5ES-2SC	SW-921	ETHERNET SWITCH, UNMANAGED, 4 RJ45, 1 FIBER, 24VDC, 5W	
23						DELETED	
24	1	EA	IDEC	PS5R-SD24	PWS-922	POWER SUPPLY, 120 VAC IN, 24 VDC OUT, 2.5A, 60 WATTS, DIN	
25	PSB	EA	COSA	XR66085	AT-316	TRANSMITTER, DEWPOINT, -148 to 68 DEGF, 4-20mA, DIV 2, w/CABLES	
26	4	EA	MCMASTER	95345A468		SCREW, #6-32 X 3/8" LG, W/EXT TOOTH LOCK WASHER	18-8 SS
27						DELETED	
28						DELETED	
29						DELETED	
30						DELETED	
31						DELETED	
32	2	EA	ISC	EHCRES020100-120	H-921, H-922	HEATER, 100W, 120VAC, CLASS I ZONE 2	
33	1	EA	ISC	01180.0-00	TS-921	THERMOSTAT, ON <52F, OFF >59F, CLASS I ZONE 2	
34	1	EA	SQUARE D	PK12GTA		GROUND BAR KIT, 12 TERMINAL	
35	1	EA		97527A011		WASHER, INT/EXT TOOTH, 3/8"	
36	1	EA	ROYAL OAK	MG109-11920-20		LABEL, "CONTROL PANEL"	
37	1	EA	ROYAL OAK	MG109-11920-25		LABELS, COMPONENT, CONTROL PANEL	
38	1	EA	ROYAL OAK	MG109-11920-30		LABEL, FUSE TABLE, CONTROL PANEL	
39	1	EA	ROYAL OAK	MG109-11920-35		NAMEPLATE, ELECTRICAL, CONTROL PANEL	
40	1	EA	SETON	M8130 5" X 3-1/2"		LABEL, DANGER, 120 VOLTS	
41	1	EA	CLARION	H6010-61WHBJ		LABEL, HAZ VOLT, REMOTE DISCONNECT	
42	9	EA	CLARION	IEC5019a-PE		LABEL, GROUND SYMBOL, 0.375"SQUARE	
43						DELETED	
44	1	EA	HOFFMAN	AS100		PLUG, HOLE IN SHEET, 1" CONDUIT, NEMA 4	

PANEL ASSEMBLY, CONTROL

10/4/2012

DWG ITEM NUMBER	QTY PER ASSY	UOM	MANUFACTURER	PRIMARY PART #	TAG NAME	DESCRIPTION	MATERIAL
45	2	EA	ALTECH	CTS2.5U-N		TERMINAL BLOCK, 5mm, 22-14 AWG	
46						DELETED	
47						DELETED	
48	1	EA	ALTECH	CGT4U		TERMINAL BLOCK, GROUND, 22-10 AWG	
49	1	EA	ALTECH	PP2.5/4UN		SEPARATOR, TERMINAL BLOCK	
50	4	EA	ALTECH	CA702		END CLAMP, DIN RAIL	
51	4	FT	PANDUIT	F1X4LG6		WIRING DUCT, 1 X 4, NARROW FINGER	PVC
52						DELETED	
53						DELETED	
54						DELETED	
55						DELETED	
56						DELETED	
57						DELETED	
58						DELETED	
59						DELETED	
60						DELETED	
61						DELETED	
62						DELETED	
63						DELETED	
64						DELETED	
65						DELETED	
66						DELETED	
67						DELETED	
68						DELETED	
69						DELETED	
70						DELETED	
71						DELETED	
72						DELETED	
73						DELETED	
74						DELETED	
75						DELETED	
76						DELETED	
77						DELETED	
78						DELETED	
79						DELETED	
80						DELETED	
81						DELETED	
82						DELETED	
83						DELETED	
84						DELETED	
85						DELETED	
86						DELETED	
87						DELETED	
88						DELETED	

PANEL ASSEMBLY, CONTROL

10/4/2012

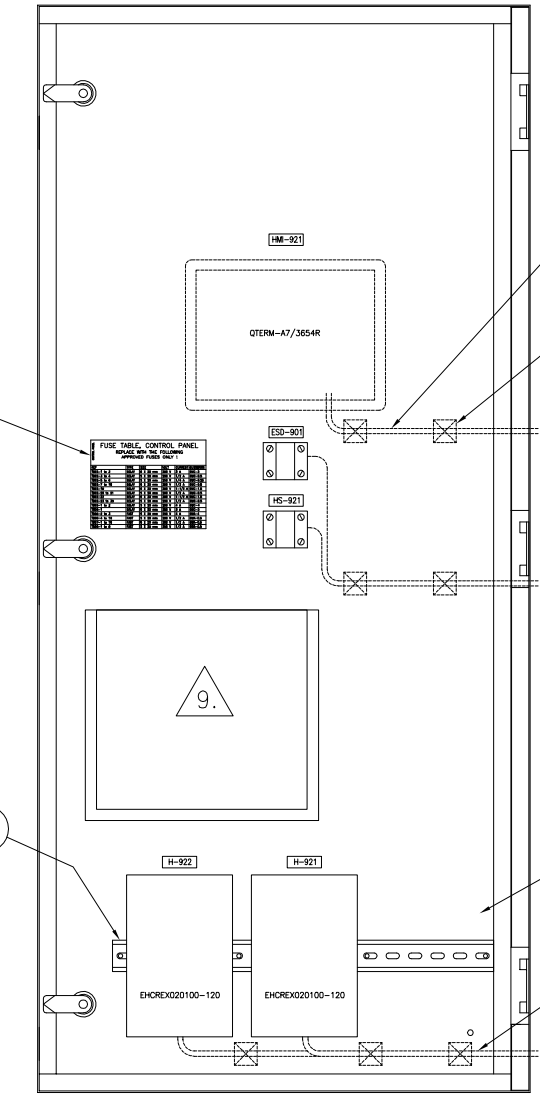
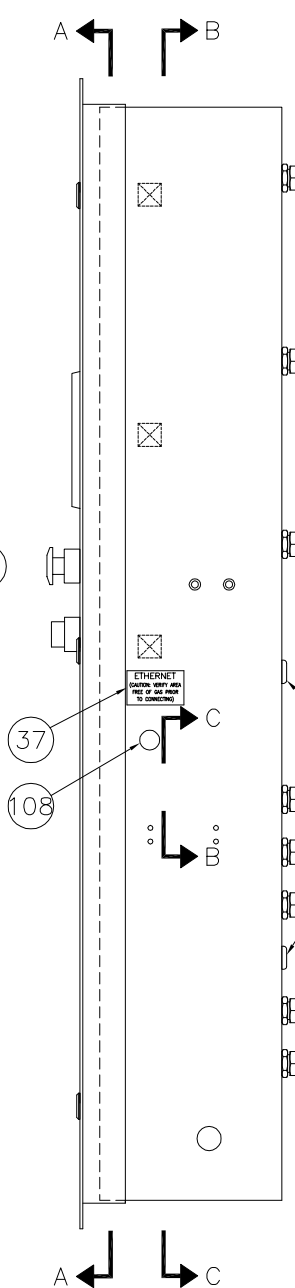
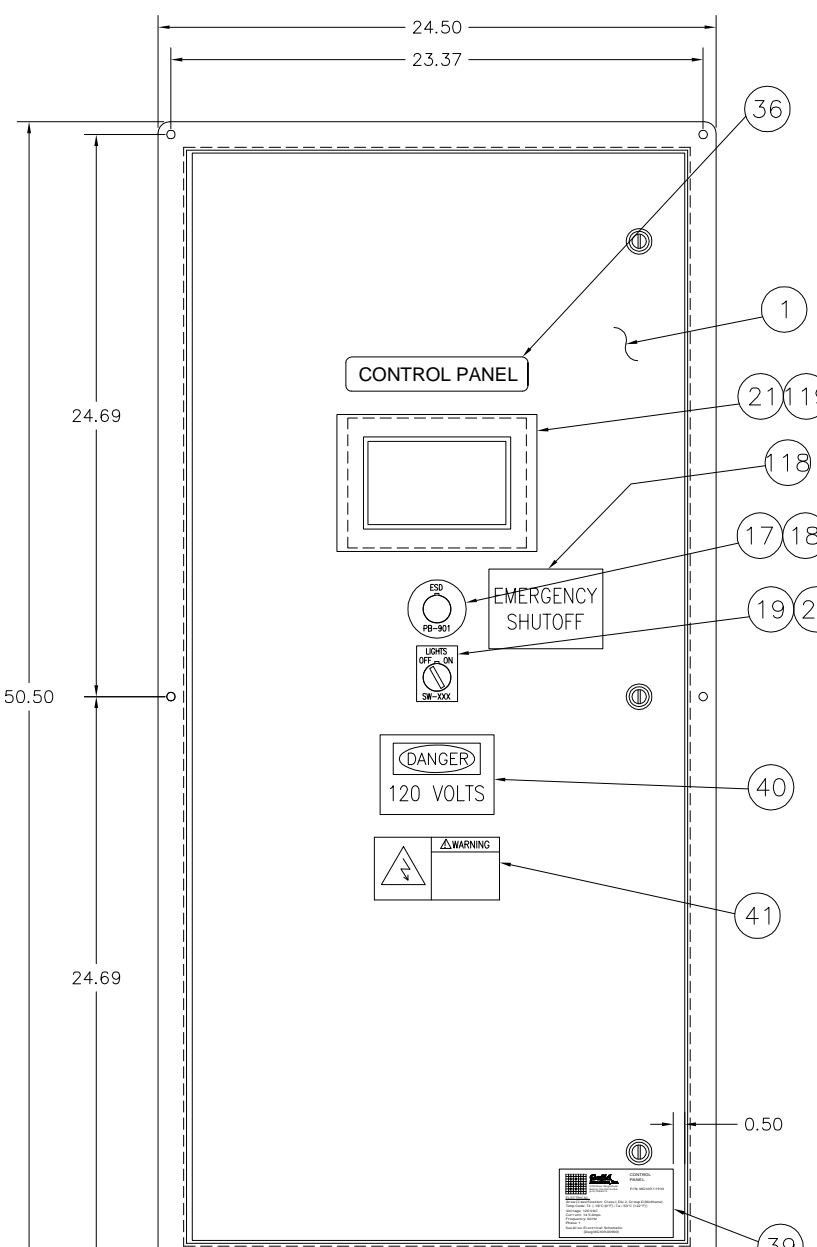
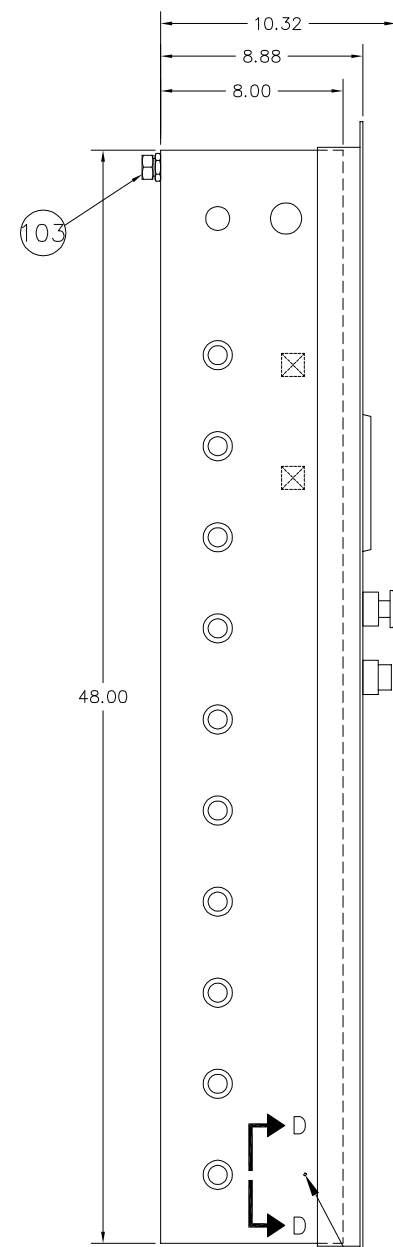
DWG ITEM NUMBER	QTY PER ASSY	UOM	MANUFACTURER	PRIMARY PART #	TAG NAME	DESCRIPTION	MATERIAL
89	1	SET	ALTECH	MT5/V-1-10		MARKING TAG, TERMINAL BLOCK, 1-10, VERTICAL	
90						DELETED	
91						DELETED	
92						DELETED	
93						DELETED	
94						DELETED	
95						DELETED	
96						DELETED	
97						DELETED	
98						DELETED	
99						DELETED	
100	AR	EA	MCMaster	7130K53		CABLE TIE, 5.5", UV RESIS	NYLON
101	AR	EA	MCMaster	SGABM25-AT-CL		MOUNT, CABLE TIE, 1" X 1", ADHESIVE BACKED	NYLON
102	6	FT	PANDUIT	SW43 BK005		SPIRAL WRAP, 1/2", BLACK POLYETH	NYLON
103	9	EA	APPLETON	STB-38		CONNECTOR, STRAIGHT, LIQUID TIGHT, 3/8"	
104						DELETED	
105	0.1	FT	PANDUIT	P32W2R15072		TAPE, ADHESIVE, DOUBLE-SIDED	
106						DELETED	
107						DELETED	
108	1	EA	EATON	M22-RJ45-SA		CONNECTOR, BULKHEAD, ETHERNET RJ45	
109	3	EA	MCMaster	9953K24		CABLE, PATCH, CAT 5E, 5' LG, BLK	
110						DELETED	
111						DELETED	
112	AR	FT	ALPHA	SW41		SPIRAL WRAP, 1/4", BLACK	POLYETHYLENE
113						DELETED	
114						DELETED	
115	4	EA	MCMaster	91847A029		NUT, THIN HEX, 1/4-20, SS 18-8	SS 18-8
116	2	EA	CFC	LWIS025		WASHER, LOCK, INTERNAL TOOTH, 1/4"	SS 18-8
117	2	EA	HOFFMAN	AS050		PLUG, HOLE IN SHEET, 1/2" CONDUIT, NEMA 4	
118	1	EA	ACCUFORM	LELC912VSP		LABEL, EMERGENCY SHUTOFF, 3.5" X 5"	
119	1	EA	BEIJER	N05-458		PROTECTOR, TOUCH SCREEN	
120	1	EA	GUILD	MG109-11920-40		DIN RAIL ASSEMBLY, LEFT SIDE	
121	1	EA	GUILD	MG109-11920-45		DIN RAIL ASSEMBLY, RIGHT SIDE	

NOTES: UNLESS OTHERWISE SPECIFIED

1. PRIOR TO INSTALLING ADHESIVE BACK WIRE DUCT OR LABELS, THOROUGHLY CLEAN SURFACE WITH ACETONE.
2. REFER TO PROJECT SPECIFIC ELECTRICAL SCHEMATIC FOR WIRING INSTALLATION.
3. ROUTE AC AND DC CIRCUITS SEPARATELY AS MUCH AS POSSIBLE.
4. CRIMP ANY TERMINALS WITH PROPER CRIMPING TOOL.
5. CONNECT INTERNAL WIRING TO THE TOP OF TERMINAL BLOCKS AS MUCH AS POSSIBLE.
6. PLACE WIRE NUMBER LABELS WITHIN 1/2" OF TERMINAL. LABEL BOTH ENDS OF EVERY WIRE.

7. REPLACE FLAT WASHER WITH INT/EXT TOOTH WASHER. VERIFY < 1 OHM RESISTANCE FROM DIN RAIL GND TO ENCLOSURE STUD.
8. ORIENT VERTICAL WIRE# LABELS TO BE READABLE WITH HEAD TURNED LEFT.
9. AFTER WIRING, PLACE UNUSED WIRE LABELS IN DOCUMENT POUCH.
10. CUT JUMPER TO NUMBER OF POLES REQUIRED.

0	05-11-12	TLP	RSB
INITIAL RELEASE			
A	05-21-12	TLP	MKG
ADD ITEM 105, ITEM 103 NOW QTY. 10 & RE-CONFIG. ADD TB01 & TB11, A-922 & DO-922 NOW USED. RE-CONFIG TB06, TB07 & TB08. ADD TB'S TO TB09. ITEM 52 QTY NOW 3 P/N NOW GMC-3. ITEM 51 NOW 1X4 DUCT. ITEM 24 P/N NOW PSSR-3224. ITEM 12 P/N NOW 1769-PA2.			
B	05-30-12	TLP	MKG
ITEM 45 QTY. NOW 48. ITEM 47 P/N NOW CA722/10. ITEM 49 QTY NOW 15. ADD ITEM 106, 107, 108, 109. MOD TB01 LABEL. SHIFT TB01 & TB02 ITEMS DOWN. ADD ENET CABLE ROUTING TO RIGHT SIDE VIEW. ITEM 50 QTY NOW 20.			
C	07-10-12	TLP	MKG
ITEM 109 NOW QTY 3. DELETED ITEM 23. ITEM 34 NOW 12 POS GND BAR. AND HORIZONTAL UPDATE CURRENT ON NAMEPLATE PLACARD. UPDATE FUSE TABLE. UPDATE PANEL, RIGHT SIDE HOLE LOCATIONS. ADD JUMPER TO TB02-2 TO TB02-10. TB02-19 & TB0-21 NOW GMC-1.5. TB02-4 NOW LT-915. TB02-5&6 NOW GMC-0.25. TB02-6 NOW STATUS TB02-6 NOW STATUS ADD TB02-69&70. ADD M-341 TO TB02-22. ADD CRT-915 TO TB03-15. ADD CRY-341 TO TB03-16. ADD TB05-1&2 NOW GMC-4. ADD TB05-1&2 NOW 3,4,5. ADD GND TB TO TB11.			
D	08-06-12	TLP	MKG
MOVE TB10 TO SHIT 3 GND BAR. DELETE TB10 TB1-4. PLC-921 PN NOW 1769-LX0ER. DELETE FIRE-900 FROM TB06. ITEM 6 & 7 NOW 6 & 16. ITEM 49 QTY NOW 9. ITEM 45 QTY NOW 28. DELETE ITEM 27. ADD ITEM 113-116. MOD ENET CONN. AT SW AND PLC ADD VIEW D-D.			
E	09-18-12	MKG	MKG
MOV H-921/922 LEFT. ITEM 20 DESC NOW OFF LIGHTS ON". ADD ITEMS 117-121. ITEM 8 QTY NOW 3. ITEM 42 QTY NOW 9. ITEM 44 QTY NOW 4. ITEM 45 QTY NOW 2. ITEM 48 QTY NOW 1. ITEM 49 QTY NOW 1. ITEM 50 QTY NOW 4. ITEM 89 QTY NOW 1. ITEM 103 QTY NOW 9. ITEM 115 NEW P/N. DELETE ITEMS: 28-31,43, 44,47,52-63,82-89, 90-99,106,107,110,111, 113, & 114.			
F	10-04-12	MKG	MKG
ITEM 44 QTY NOW 1.			



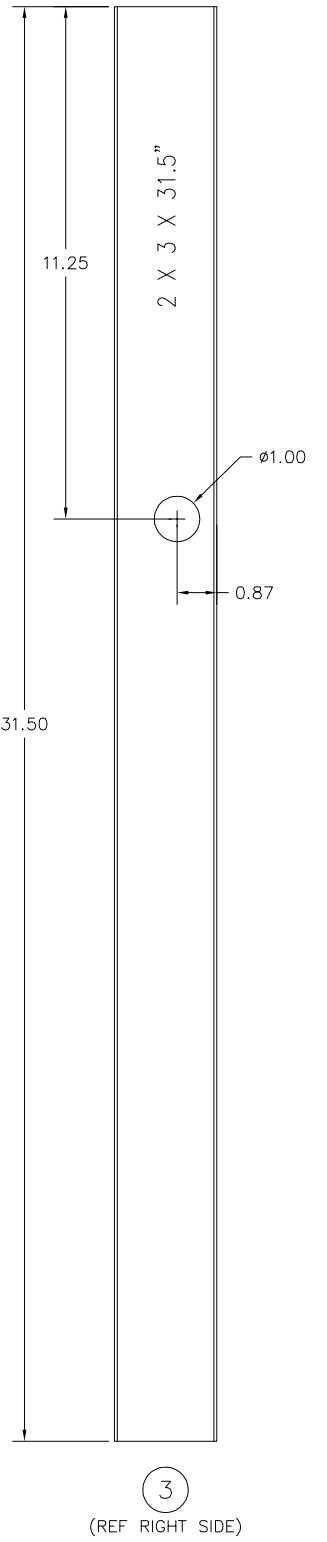
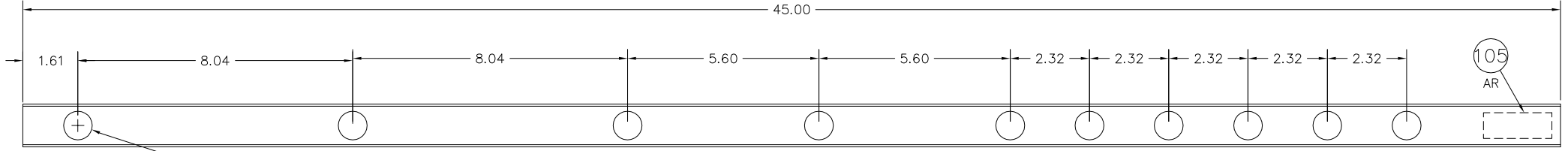
VIEW A-A
(INSIDE DOOR)

SEE SEPARATE PARTS LIST

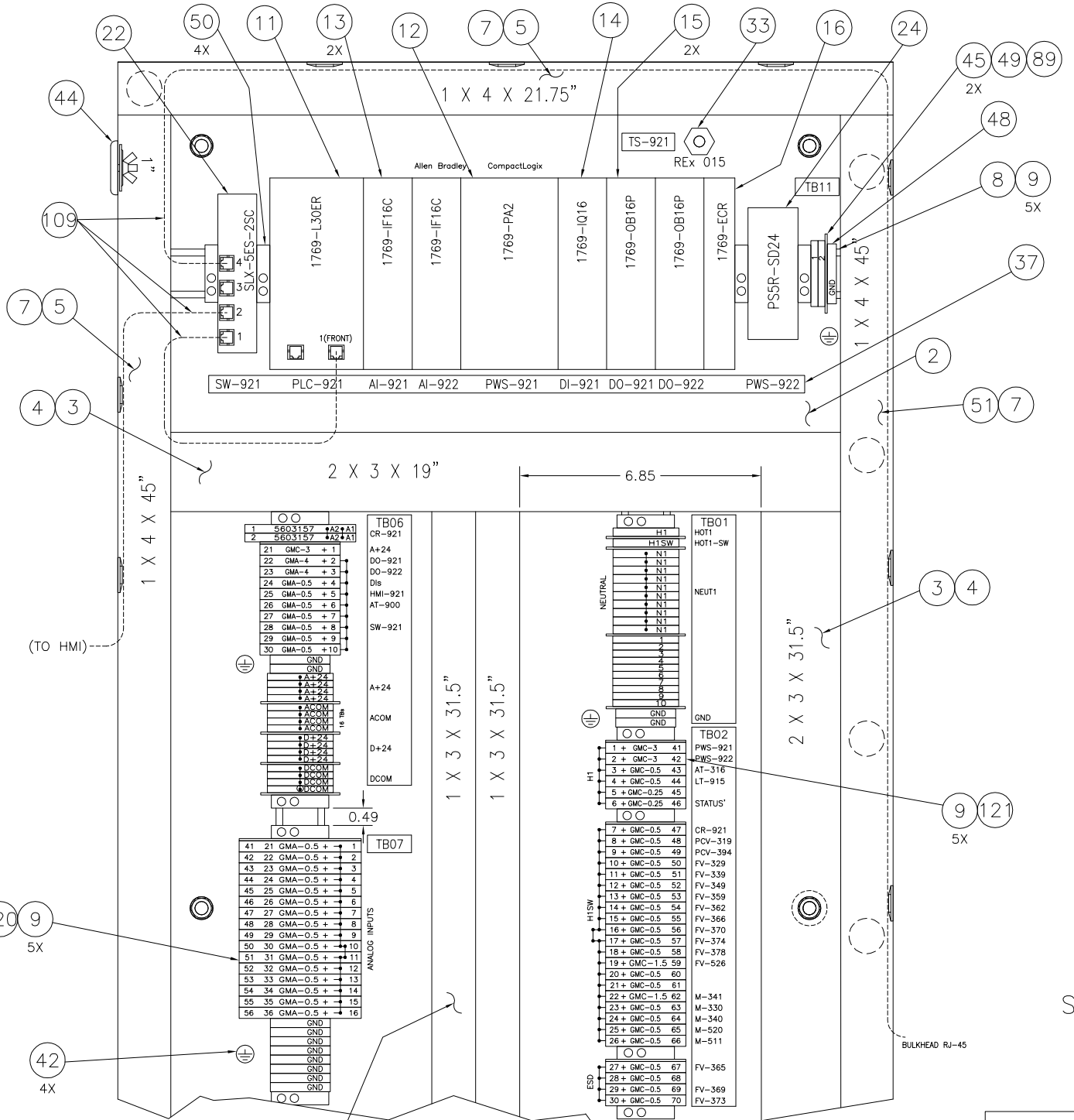
PROPRIETARY
04 OCT 2012

Guild Associates, Inc.
5750 SHIER RINGS ROAD
DUBLIN, OHIO 43016

<p>GE Oil & Gas</p>	<p>DO NOT SCALE DIMENSIONS UNLESS OTHERWISE SPECIFIED</p> <p>UNLESS OTHERWISE SPECIFIED</p>
<p>NAME: PANEL ASSEMBLY, CONTROL FOR CNG400</p>	<p>SCALE: 1/4</p>
<p>FILE NO.: CHG00N_05-11-12</p>	<p>SHEET PART NO: 1/3 MG109-11920</p>
<p>ISSUE</p>	<p>DATE</p>



51 (REF RIGHT SIDE)



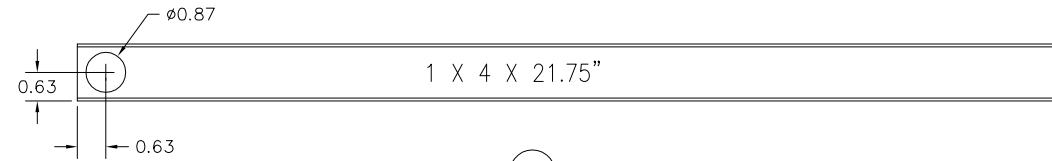
VIEW B-B (UPPER HALF)

PROPRIETARY
04 OCT 2012

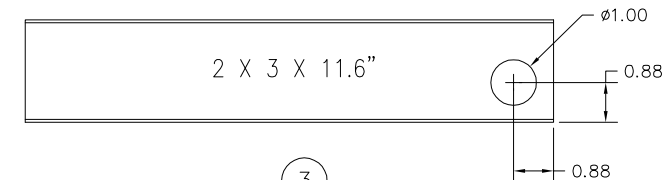
SEE SEPARATE PARTS LIST

Guild Associates, Inc.
5750 SHIER RINGS ROAD
DUBLIN, OHIO 43016

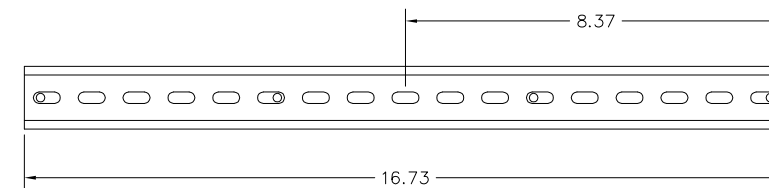
<p>GE Oil & Gas</p>	<p>DO NOT SCALE DIMENSIONS THIS AREA PROJECTION</p>	<p>WET. R F</p>	<p>ANGULAR TOLERANCE ±</p>	<p>UNLESS OTHERWISE SPECIFIED 1-PLACE DEC.±.060 2-PLACE DEC.±.030 3-PLACE DEC.±.010</p>
	<p>BREAK ALL SHARP CORNERS AND REMOVE BURRS UNLESS OTHERWISE SPECIFIED. STAMP ON EACH PART IDENTIFICATION IN AREA MARKED</p>	<p>SIMILAR TO MK</p>	<p>NAME PANEL ASSEMBLY, CONTROL FOR CNG400</p>	<p>FILE NO. MCHG00N_05-11-12</p>
<p>© GE Oil & Gas Operations, LLC, 2004 Confidentiality Notice: This drawing contains confidential information of GE Oil & Gas Operations LLC ("GE O&G"). It may not be shared with third parties or used, copied or distributed in any manner without the express written permission of GE O&G.</p>	<p>ISSUE</p>	<p>DATE</p>	<p>BY</p>	<p>CHK</p>



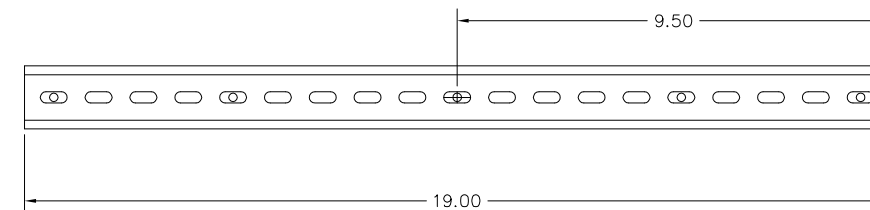
5
(REF TOP SHEET 2)



3
(REF BOTTOM)

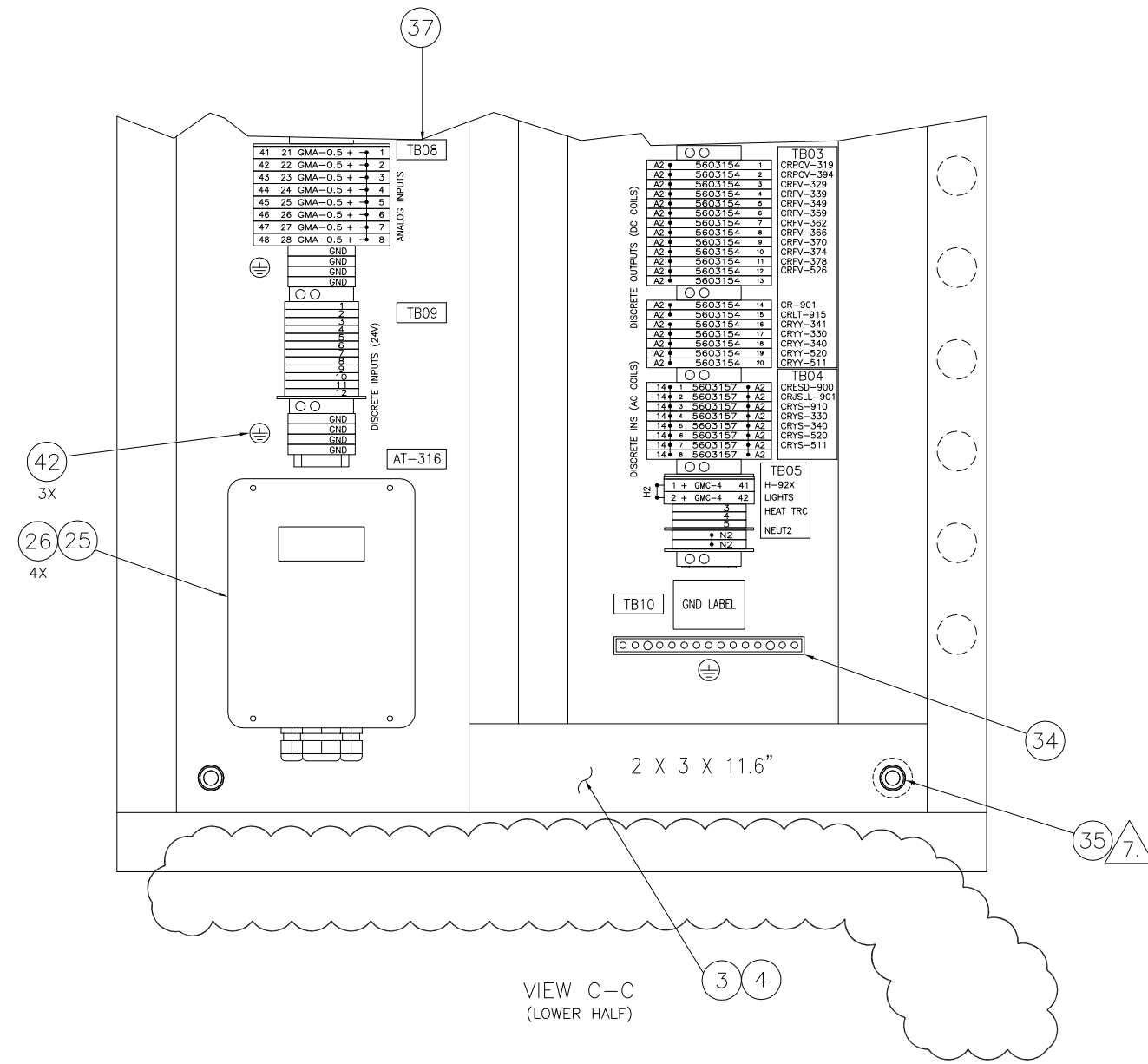


8
(REF INSIDE DOOR SHEET 1)



8
(REF TOP SHEET 2)

SEE SEPARATE PARTS LIST



VIEW C-C
(LOWER HALF)

PROPRIETARY
04 OCT 2012

Guild Associates, Inc.
5750 SHIER RINGS ROAD
DUBLIN, OHIO 43016

<p>GE Oil & Gas</p>	<p>DO NOT SCALE DIMENSIONS PROJECTION</p> <p>BREAK ALL SHARP CORNERS AND REMOVE BURRS UNLESS OTHERWISE SPECIFIED. STAMP ON EACH PART IDENTIFICATION IN AREA MARKED</p>	<p>WGT. F</p> <p>ANGULAR TOLERANCE ±</p> <p>UNLESS OTHERWISE SPECIFIED: 1-PLACE DEC: ±.060 2-PLACE DEC: ±.030 3-PLACE DEC: ±.010</p>	<p>NAME PANEL ASSEMBLY, CONTROL FOR CNG400</p>
<p>FILE NO. MKG</p>	<p>SIMILAR TO MKG</p>	<p>SCALE 1/2</p>	<p>SHEET PART NO 3/3 MG109-11920</p>
<p>© GE Oil & Gas Operations, LLC, 2004 Confidentiality Notice: This drawing contains confidential information of GE Oil and Gas Operations LLC ("GE O&G"). It may not be shared with third parties or used, copied or distributed in any manner without the express written permission of GE O&G.</p>	<p>AP BROWN_05-11-12</p>	<p>ISSUE</p>	<p>MG109-11920 REV F ASSY CONTROL PNL 100412.dwg</p>

GE OIL & GAS NA DT-XX