


NOTES: UNLESS OTHERWISE SPECIFIED

1. SHEET(s)	PANEL(s)	WIRE NUMBERS USED
6, 7, 9, 12, 13	FIELD CONNECTS	F0001-F0042, F0050-F0059, F0064-F0065, F0069, F0073, F0075, F0077-F0081, F0083-F0086, F0091-F0116
6, 7, 12, 13	REMOTE POWER PANEL	90001-90016, 90019-90131, 90133-90141, 90146-90156
6, 7, 9-14	COMPRESSOR CONTAINER	11001-11113, 11138-11155, 11162-11194, 11196-11198, 11200-11205, 11208-11209, 11211-11272
7, 9-14	CONTROL PANEL	31001-31030, 31032-31033, 31036-31076, 31079-31093, 31096-31149, 31155, 31157, 31159-31164, 31168, 31170

2. DIAMONDS WITH NUMBERS (i.e. ) INDICATE FIELD CONNECTIONS BY OTHERS. SEE DRAWING "MG129-00902 REV latest LIST FIELD ELECT date.xls" FOR DETAILS.
 LV = LOW VOLTAGE 460V
 CP = CONTROL POWER 120V
 IN = INSTRUMENTATION 24V
 CM = COMMUNICATIONS
 GN = GROUND

- 3. * INDICATES EQUIPMENT SUPPLIED BY OTHERS.
- 4. ORIENT ALL VERTICAL WIRE LABELS TO BE READABLE WITH HEAD TURNED TO THE LEFT.
- 5. WIRING INTERNAL TO THE PANEL TO BE LANDED ON TOP SCREW. FIELD WIRING TO BE LANDED ON BOTTOM SCREW.
- 6. AFTER SITE ELECTRICAL CHECKED AND APPROVED BY GUILD, THESE INSTRUMENTS REQUIRE CONDUIT SEALS PACKED AND POURED BY OTHERS.
- 7. ROUTE COMMUNICATION CABLES ON SOFT STARTER FRONT AS SHOWN & SECURE WITH CABLE TIES. CONTINUE IN WIRE DUCT TOWARDS FRONT/LEFT OF ENCLOSURE.
- 8. FIELD & SKID WIRING GROUND CONNECTION TO BE WIRED TO CONDUIT GROUND BUSHING THEN ON TO GROUND TERMINAL.
- 9. CROSS PAGE CONECTION NUMBERS USED. 1-12.
- 10. SET OVERLOAD OL-520 TO EITHER 0.5 OR 0.7 BASED ON MOTOR M-520 NAMEPLATE.

SEQUENCE OF OPERATION:
 A. VERIFY EMERGENCY SHUTDOWN (ESD) BUTTONS ARE OUT.
 B. TURN ON REMOTE POWER PANEL CONTROL POWER SWITCH.
 C. PLC AND LEL POWER UP AND IF NO GAS OR FAULTS ARE DETECTED, THE PLC WILL ENERGIZE RELAY CR-901(IN CONTROL PANEL) TO ALLOW TURNING ON THE MAIN BREAKER BY ENERGIZING THE UNDER VOLTAGE LATCH.
 D. THE ESD(s), CR-901, LEL, AND FIRE TEMP SWITCH(s) CIRCUIT ALSO TURNS ON THE CONTROL POWER INDICATOR TO LET THE OPERATOR KNOW THE MAIN BREAKER CAN BE TURNED ON.
 E. THIS SAME CIRCUIT ALSO ENERGIZES CR-902 (IN REMOTE POWER PANEL). CR-902 CONTACTS CLOSE TO SUPPLY 120 VAC POWER (H1SW) TO OUTPUTS.
 F. HISW ENERGIZES RELAY CR-921 (ACTUALLY 2 RELAYS IN CONTROL PANEL) WHOSE CONTACTS CLOSE TO SUPPLY 24 VDC POWER (D+24 & DCOM) TO OUTPUTS.
 G. OPERATOR TURNS ON THE MAIN BREAKER.
 H. OPERATOR STARTS THE PLANT VIA HMI INTERFACE ON TOUCH SCREEN FOLLOWING DIRECTIONS IN THE MANUAL.

INDEX

DESCRIPTION	SHEET(S)
COVER, NOTES, SEQ OF OPER, INDEX, REV BLOCK	01
SYMBOLS LEGEND	02
FUSE TABLES	03
REMOTE POWER PANEL (LAYOUT)	04
JUNCTION BOX #93X (LAYOUTS)	05
POWER/MOTORS/HEATERS (460V)	06
REMOTE POWER PANEL (120V, COMM)	07
CONTROL PANEL (LAYOUT)	08
CONTROL PANEL (120V)	09
CONTROL (ANALOG INPUTS)	10 to 11
CONTROL (DISCRETE INPUTS)	12
CONTROL (DISCRETE OUTPUTS, MOTOR XTROL)	13
CONTROL (DISCRETE OUTPUTS, SOLENOID VALVES)	14


DATE		DRAWN	APPROVED
08-21-14		K.GAGNON	K.GAGNON
REV	SHT	DESCRIPTION	
0	ALL	INITIAL RELEASE.	

WIRE COLORS (UNLESS PROHIBITED BY MFR CABLE COLORS)

CIRCUIT DESCRIPTION	COLOR
LOW VOLTAGE 480VAC	BLACK (BK)
CONTROL VOLTAGE 120VAC (HOT)	RED (RD)
NEUTRAL (NEUTRAL)	WHITE (WH)
GROUND (PE)	GREEN (GN)
INSTRUMENT VOLTAGE 24VDC	BLUE (BU)

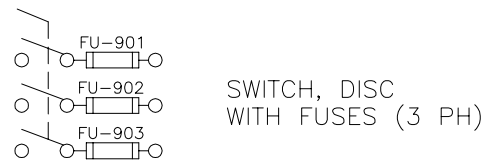
PROPRIETARY
21 AUG 2014

Guild Associates, Inc.
 5750 SHIER RINGS ROAD
 DUBLIN, OHIO 43016

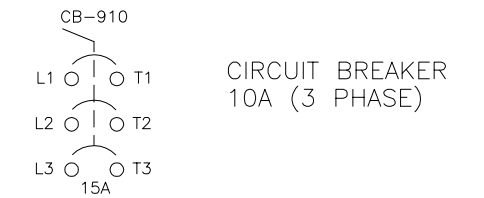
 GE Oil & Gas	DO NOT SCALE CAD GENERATED DRAWING. DO NOT MANUALLY PRODUCE.	UNLESS OTHERWISE SPECIFIED: 1-PLACE DEC: ±.060 2-PLACE DEC: ±.030 3-PLACE DEC: ±.010
	BREAK ALL SHARP CORNERS AND REMOVE BURRS UNLESS OTHERWISE SPECIFIED. STAMP OR ETCH PART IDENTIFICATION IN AREA MARKED.	NAME: _____ SIMILAR TO: MK. - FILE NO.: _____
© GE Oil & Gas Operations, LLC, 2004 Confidentiality Notice: This drawing contains confidential information of GE Oil and Gas Operations LLC. THE OWNER. It may not be copied, reproduced, stored in a retrieval system, or distributed in any manner without the express written permission of GE O&G.		
SCALE: NA SHEET: 1/14 PART NO: MG129-00900 ISSUE: 0		

SYMBOL LEGEND

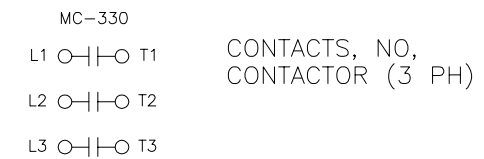
POWER



SWITCH, DISC WITH FUSES (3 PH)



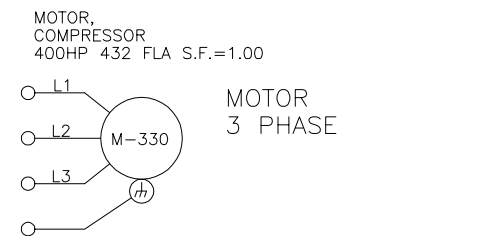
CIRCUIT BREAKER 10A (3 PHASE)



CONTACTS, NO, CONTACTOR (3 PH)



REDUCED VOLTAGE SOFT-STARTER



MOTOR 3 PHASE



HEATER ELEMENT, RESISTANCE TYPE

CONTROL



FUSE



CIRCUIT BREAKER, 1 POLE, 15 AMP



PUSHBUTTON, NC, MUSHROOM HEAD



PUSHBUTTON, NC, MOMENTARY



PUSHBUTTON, NC, MOMENTARY



INDICATOR, WHITE (CLEAR)



COIL, CONTROL RELAY, W/SURGE SUPPRESSOR



GROUND (PROTECTIVE EARTH)



CONTACTS, NC, OVERLOAD RELAY



CONTACTS, NO, CONTROL RELAY

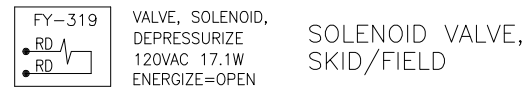


CONTACTS, NC, TEMPERATURE SWITCH



HEATER, MOTOR SPACE, 200 WATT

INSTRUMENTATION

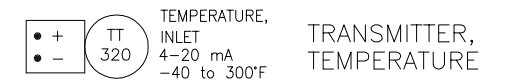


VALVE, SOLENOID, DEPRESSURIZE 120VAC 17.1W ENERGIZE=OPEN

SOLENOID VALVE, SKID/FIELD

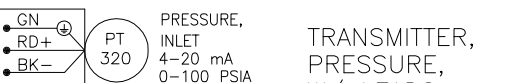


COIL, SOL VALVE, W/ CONNECTOR



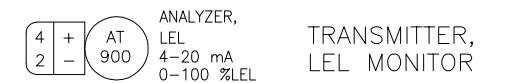
TEMPERATURE, INLET 4-20 mA -40 to 300°F

TRANSMITTER, TEMPERATURE



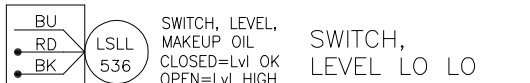
PRESSURE, INLET 4-20 mA 0-100 PSIA

TRANSMITTER, PRESSURE, W/ LEADS



ANALYZER, LEL 4-20 mA 0-100 %LEL

TRANSMITTER, LEL MONITOR



SWITCH, LEVEL, MAKEUP OIL CLOSED=Lvl OK OPEN=Lvl HIGH

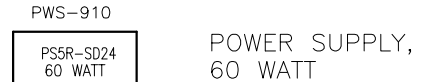
SWITCH, LEVEL LO LO



VALVE POSITION, INLET PRESSURE 4-20 mA 0-100 % OPEN

VALVE, PRESSURE CONTROL

PLC & I/O



POWER SUPPLY, 60 WATT



PROGRAMMABLE LOGIC CONTROLLER (PLC)



MODULE, I/O ANALOG INPUT



MODULE, I/O ANALOG OUTPUT



MODULE, I/O DISCRETE INPUT



MODULE, I/O DISCRETE OUTPUT



BARRIER, INTRINSIC SAFETY

WIRING



BORDER, PANEL WALL



WIRE, INTERNAL/SKID, GREEN 14 AWG THWN



WIRE, FIELD INSTALLED, RED 18 AWG TFFN



WIRE # 31056 REF ONLY NUMBER REPEATED ELSEWHERE



CROSS PAGE (NUMBER) CONNECTOR



COMMUNICATION LINK "AH", ETHERNET, FIELD INSTALLED



CONDUIT OR CABLE RUN, FIELD INSTALLED LOW VOLTAGE 460V RUN 02



INDICATES EQUIPMENT SUPPLIED BY OTHERS



TERMINAL BLOCK 06 TERMINAL NUMBER 134



WIRE ROUTING PATH W/ CABLE TIE MOUNT



FIELD CABLE TO MOTOR M-340



FIELD CABLE 120V HOT/NEUT/GND



FIELD CABLE ETHERNET COMMUNICATIONS

PROPRIETARY
21 AUG 2014

MG129-00900 SH02 REVO SCHEM ELEC Legend 082114.dwg

Guild Associates, Inc.
5750 SHIER RINGS ROAD
DUBLIN, OHIO 43016

<p>GE Oil & Gas</p>	<p>DO NOT SCALE CAD GENERATED DRAWING. DO NOT MANUALLY PRODUCE.</p>	<p>WGT. R F</p>	<p>ANGULAR TOLERANCE</p>
	<p>BREAK ALL SHARP CORNERS AND REMOVE BURRS UNLESS OTHERWISE SPECIFIED. STAMP OR ETCH PART IDENTIFICATION IN AREA MARKED.</p>	<p>1-PLACE DEC:±.060 2-PLACE DEC:±.030 3-PLACE DEC:±.010</p>	<p>ELECTRICAL SCHEMATIC, SYMBOLS LEGEND</p>
<p>FILE NO. MK.-</p>	<p>MATERIAL</p>	<p>SCALE SHEET PART NO. ISSUE</p>	
<p>DATE: 08-21-14</p>	<p>SCALE: NA</p>	<p>SHEET: 2/14</p>	<p>PART NO: MG129-00900</p>
<p>ISSUE: 0</p>	<p>GE OIL & GAS NA DT</p>		

REMOTE PWR PNL
FUSE TABLE, REMOTE POWER PNL
 REPLACE WITH THE FOLLOWING
 APPROVED FUSES ONLY !

REF	TYPE	SIZE	VOLT	CURRENT	BUSSMANN
FU-911 to FU-913	DELAY	1-1/8" x 4-5/8"	600 V	80 A	LPJ-80SP
FU-914 to FU-916	DELAY	1-1/16" x 2-3/8"	600 V	60 A	LPJ-60SP
FU-920, 921	DELAY	13/32" x 1-1/2"	600 V	12 A	FNQ-R-12
TB01-21 to 23	DELAY	5 X 20 mm	250 V	1/2 A	GMC-0.5
TB01-24 to 27	DELAY	5 X 20 mm	250 V	4 A	GMC-4
TB01-28	DELAY	5 X 20 mm	250 V	1/2 A	GMC-0.5
TB01-29	DELAY	5 X 20 mm	250 V	1-1/2 A	GMC-1.5
UPS-921 OUTLETS	FAST	1/4" x 1-1/4"	250 V	15 A	AGC-15
UPS-921 BATTERY	VERY FAST	1/4" x 1-1/4"	125 VDC	30 A	GBB-30

CONTROL PANEL
FUSE TABLE, CONTROL PANEL
 REPLACE WITH THE FOLLOWING
 APPROVED FUSES ONLY !

REF	TYPE	SIZE	VOLT	CURRENT	BUSSMANN
TB02-1 to 2	DELAY	5 X 20 mm	250 V	3 A	GMC-3
TB02-3 to 4	DELAY	5 X 20 mm	250 V	1/2 A	GMC-0.5
TB02-5 to 6	DELAY	5 X 20 mm	250 V	1/4 A	GMC-0.25
TB02-7 to 18	DELAY	5 X 20 mm	250 V	1/2 A	GMC-0.5
TB02-19 to 22	DELAY	5 X 20 mm	250 V	1-1/2 A	GMC-1.5
TB02-23 to 30	DELAY	5 X 20 mm	250 V	1/2 A	GMC-0.5
TB05-1 to 2	DELAY	5 X 20 mm	250 V	4 A	GMC-4
TB06-1	DELAY	5 X 20 mm	250 V	3 A	GMC-3
TB06-2 to 3	FAST	5 X 20 mm	250 V	4 A	GMA-4
TB06-4 to 10	FAST	5 X 20 mm	250 V	1/2 A	GMA-0.5
TB07-1 to 16	FAST	5 X 20 mm	250 V	1/2 A	GMA-0.5
TB08-1 to 12	FAST	5 X 20 mm	250 V	1/2 A	GMA-0.5

JUNCT #935
FUSE TABLE, JUNCT BOX #935
 REPLACE WITH THE FOLLOWING
 APPROVED FUSES ONLY !

REF	TYPE	SIZE	VOLT	CURRENT	BUSSMANN
FU-361 to FU-369	DELAY	13/32" x 1-1/2"	600 V	2-1/2 A	LP-CC-2.5

PROPRIETARY
 21 AUG 2014

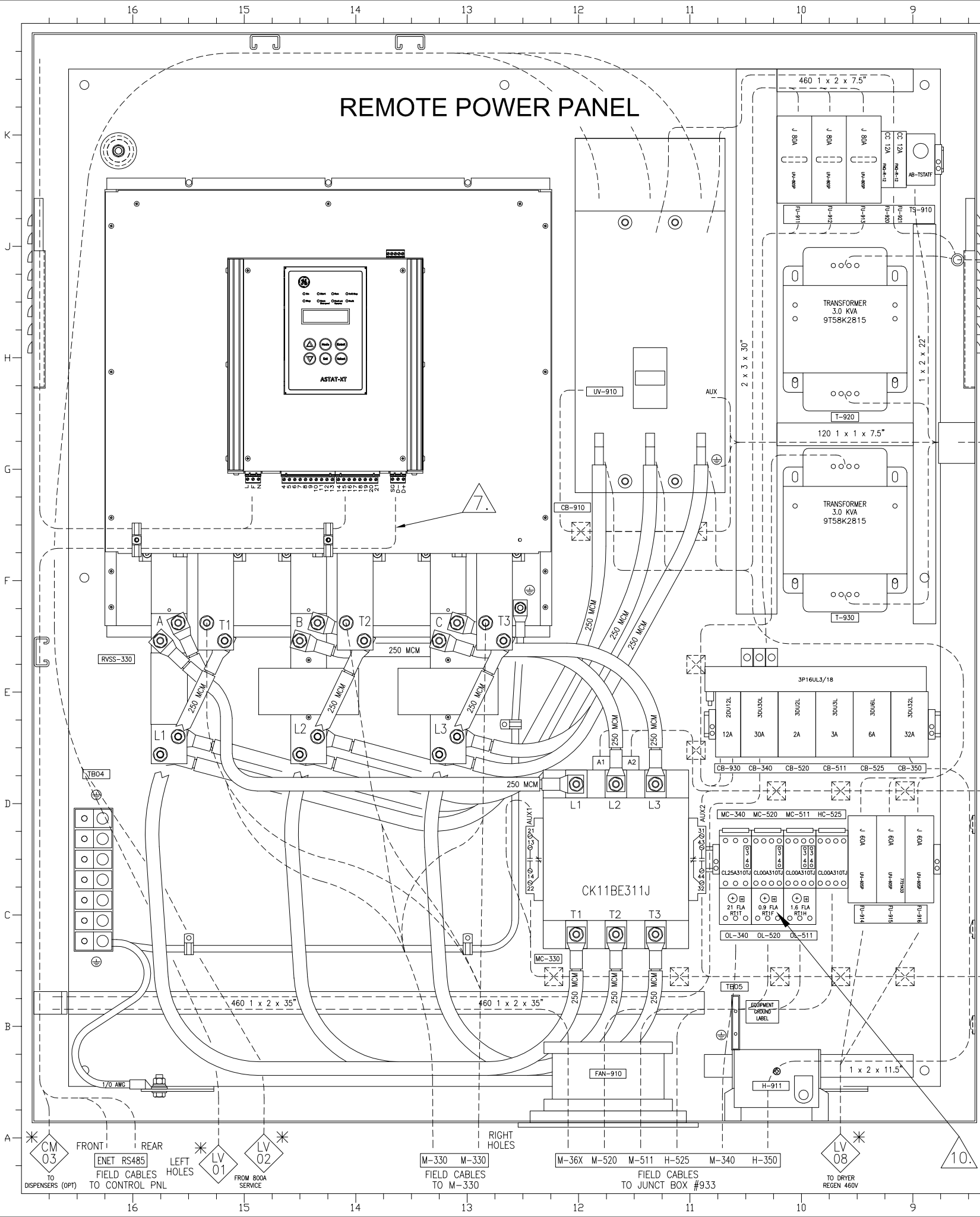
Guild Associates, Inc.
 5750 SHIER RINGS ROAD
 DUBLIN, OHIO 43016



DO NOT SCALE THIS ANGLE NOT MANUALLY PROTECTIVE LETTER	UNLESS OTHERWISE SPECIFIED 1-PLACE DEC: ±.060 2-PLACE DEC: ±.030 3-PLACE DEC: ±.010
NAME	ELECTRICAL SCHEMATIC, FUSE TABLES
SIMILAR TO	MAT'L
FILE NO.	

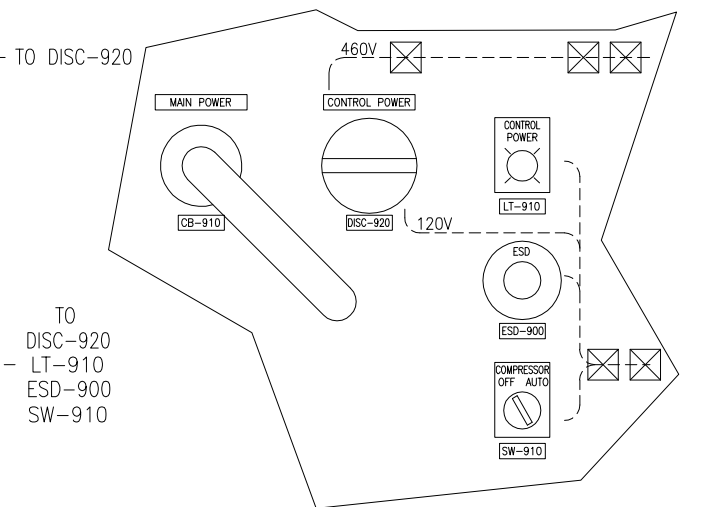
© GE Oil & Gas Operations, LLC, 2004
 Confidentiality Notice
 This drawing contains confidential information of
 GE Oil & Gas Operations LLC. THE OWNER
 It may not be shared with third parties or used,
 copied or distributed in any manner without the
 express written permission of GE O&G.

REMOTE POWER PANEL

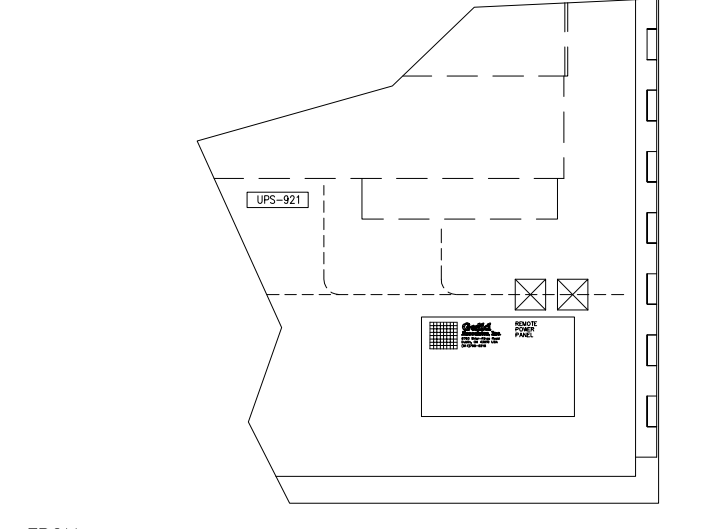


PANEL POWER
 VOLTAGE: 460 VAC
 PHASE: 3
 CURRENT: 566 A

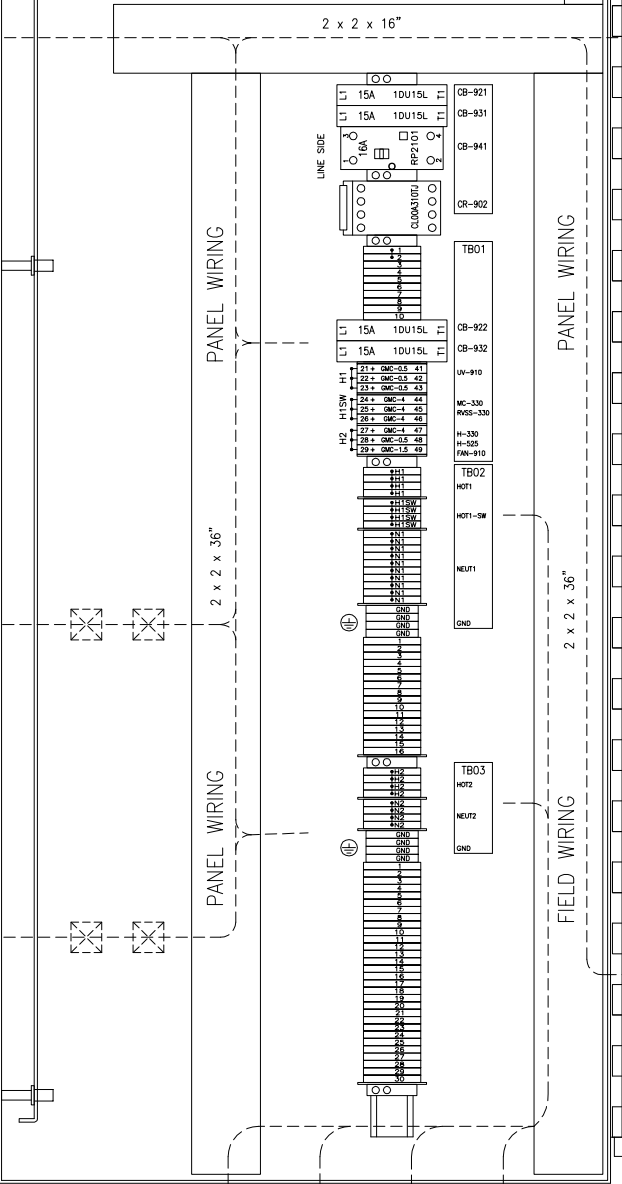
REMOTE POWER PANEL (DOOR FRONT)



REMOTE POWER PANEL (INSIDE RIGHT DOOR)



INSIDE RIGHT WALL



PROPRIETARY
 21 AUG 2014

MG129-00900 Sh04 REVO SCHEM ELEC Rem Pwr Pnl Layout 082114.dwg

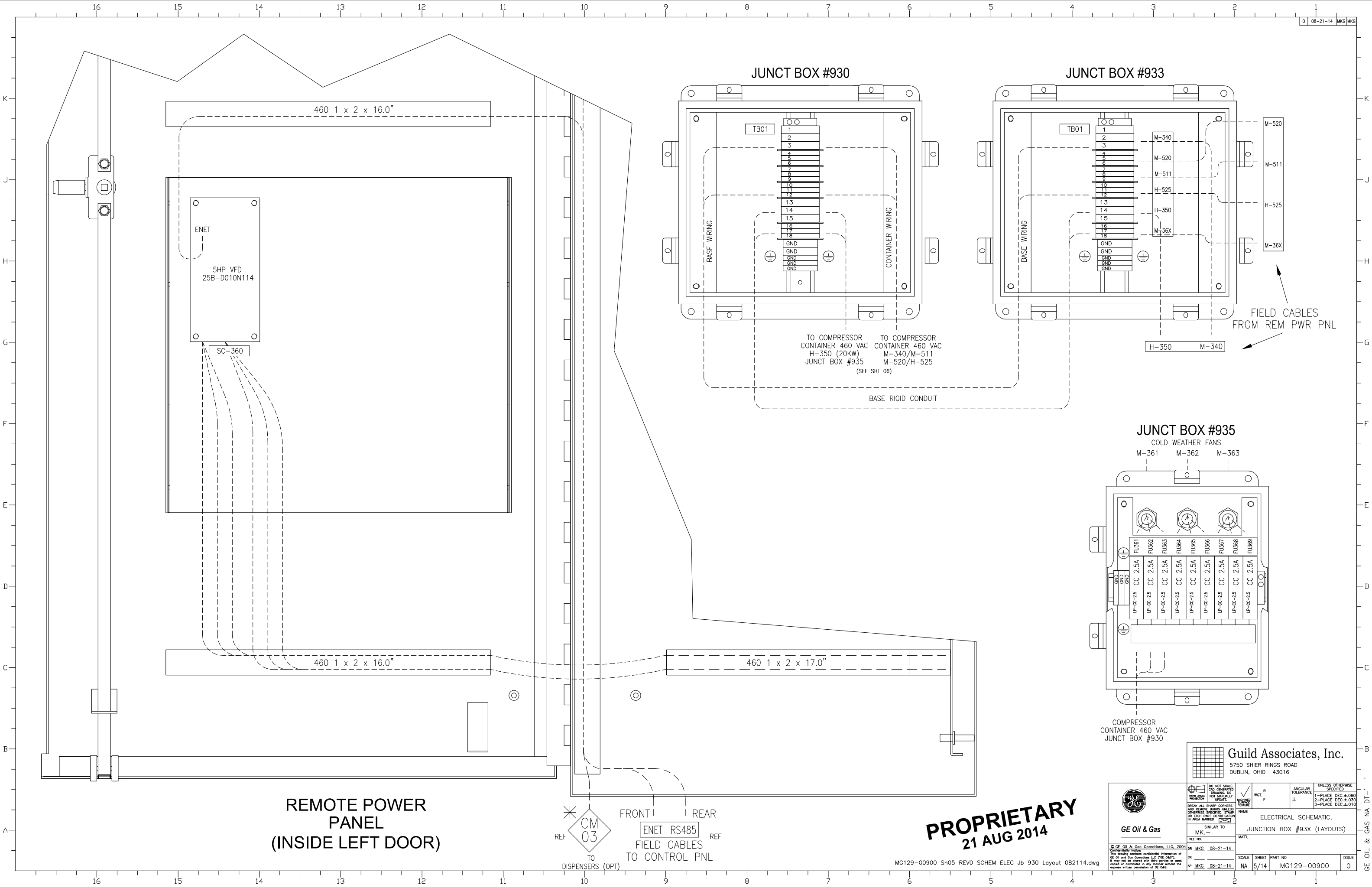
Guild Associates, Inc.
 5750 SHIER RINGS ROAD
 DUBLIN, OHIO 43016

<p>GE Oil & Gas</p>	<p>DO NOT SCALE THIS DRAWING. DIMENSIONS SHOWN DO NOT MANUALLY PREVENTIVE.</p>	<p>WGT. R F</p>	<p>ANGULAR TOLERANCE ±</p>
	<p>BREAK ALL SHARP CORNERS AND REMOVE BURRS UNLESS OTHERWISE SPECIFIED. STAMP OR ENH PART IDENTIFICATION IN AREA MARKED []</p>	<p>UNLESS OTHERWISE SPECIFIED</p>	<p>1-PLACE DEC.±.060 2-PLACE DEC.±.030 3-PLACE DEC.±.010</p>
<p>FILE NO. MK-08-21-14</p>	<p>MATERIAL</p>	<p>SCALE SHEET PART NO. NA 4/14</p>	<p>ISSUE MG129-00900 0</p>

CM 03 FRONT TO DISPENSERS (OPT)
 REAR TO CONTROL PNL
 LV 01 FROM BOOA SERVICE
 LV 02

RIGHT HOLES
 M-330 M-330
 FIELD CABLES TO M-330
 M-36X M-520 M-511 H-525
 FIELD CABLES TO JUNCT BOX #933
 M-340 H-350
 TO DRYER REGEN 460V
 LV 08

CP 04 TO DISPENSERS
 CP 03 TO DRYER REGEN ESD (OPT)
 STATUS HEAT/ESD
 STARTS H/N/G
 FIELD CABLES TO CONTROL PNL



REMOTE POWER
PANEL
(INSIDE LEFT DOOR)

JUNCT BOX #930

JUNCT BOX #933

JUNCT BOX #935

COLD WEATHER FANS

M-361 M-362 M-363

TO COMPRESSOR
CONTAINER 460 VAC
H-350 (20KW)
JUNCT BOX #935
(SEE SHT 06)

TO COMPRESSOR
CONTAINER 460 VAC
M-340/M-511
M-520/H-525
(SEE SHT 06)

FIELD CABLES
FROM REM PWR PNL

COMPRESSOR
CONTAINER 460 VAC
JUNCT BOX #930

CM 03
TO DISPENSERS (OPT)

FRONT REAR
ENET RS485
FIELD CABLES
TO CONTROL PNL

PROPRIETARY
21 AUG 2014

MG129-00900 Sh05 REV0 SCHEM ELEC Jb 930 Layout 082114.dwg

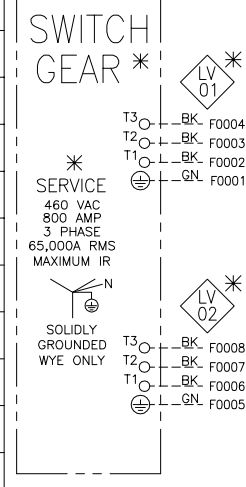
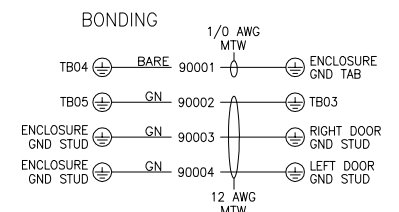
Guild Associates, Inc.
5750 SHIER RINGS ROAD
DUBLIN, OHIO 43016

<p>GE Oil & Gas</p>	<p>DO NOT SCALE DIMENSIONS DO NOT MANUALLY PROTECT</p>	<p>WGT. R F</p>	<p>ANGULAR TOLERANCE ±</p>
	<p>BREAK ALL SHARP CORNERS AND REMOVE BURRS UNLESS OTHERWISE SPECIFIED. STAMP OR ETCH PART IDENTIFICATION IN AREA MARKED</p>	<p>NAME MK</p>	<p>UNLESS OTHERWISE SPECIFIED 1-PLACE DEC: ±.060 2-PLACE DEC: ±.030 3-PLACE DEC: ±.010</p>
<p>FILE NO. MK</p>	<p>SIMILAR TO MK</p>	<p>SCALE NA</p>	<p>SHEET PART NO 5/14</p>
<p>DATE 08-21-14</p>	<p>ISSUE 0</p>	<p>MG129-00900</p>	<p>MG129-00900</p>

GE OIL & GAS NA DT

REMOTE POWER PANEL

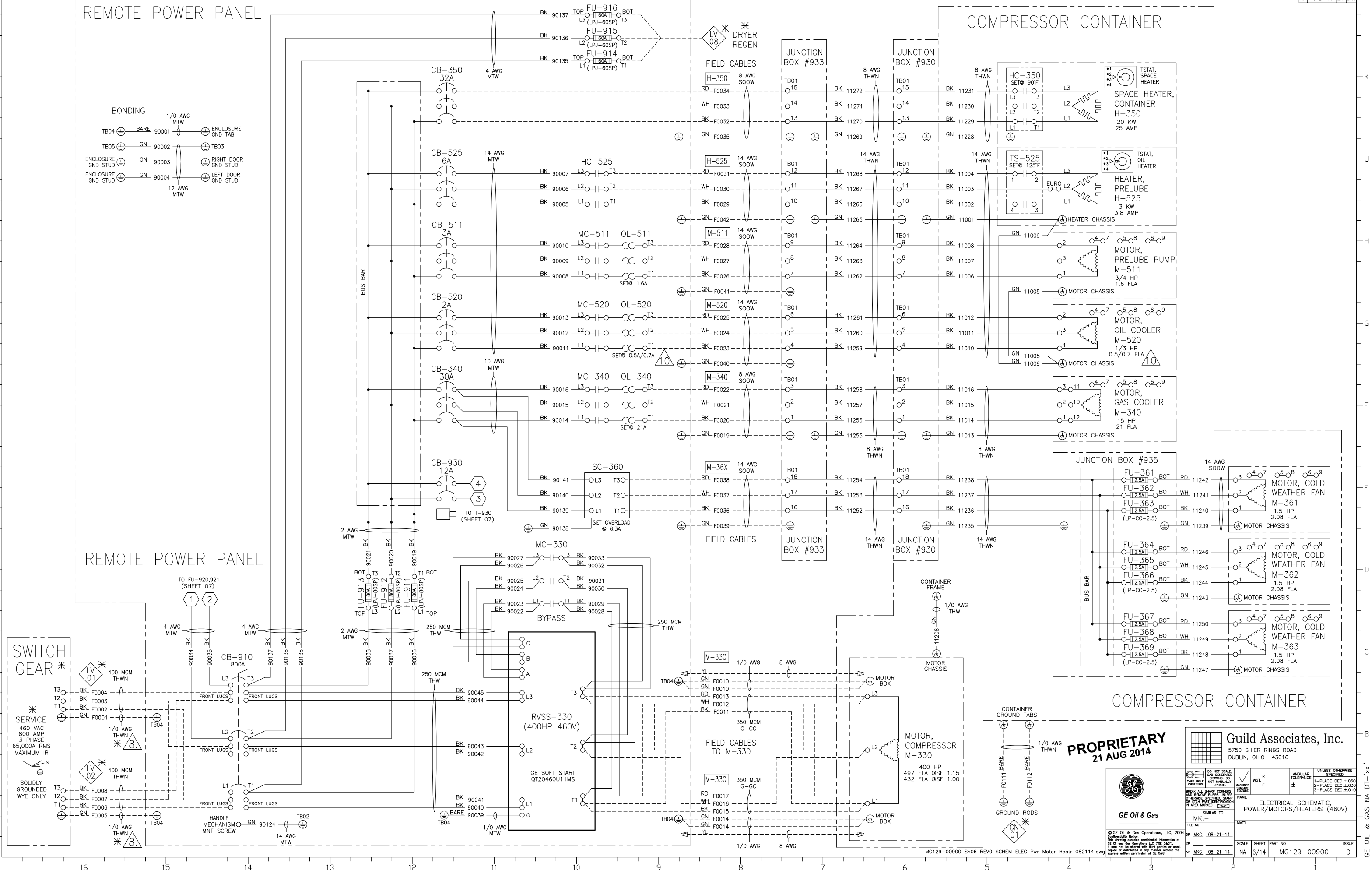
COMPRESSOR CONTAINER



REMOTE POWER PANEL

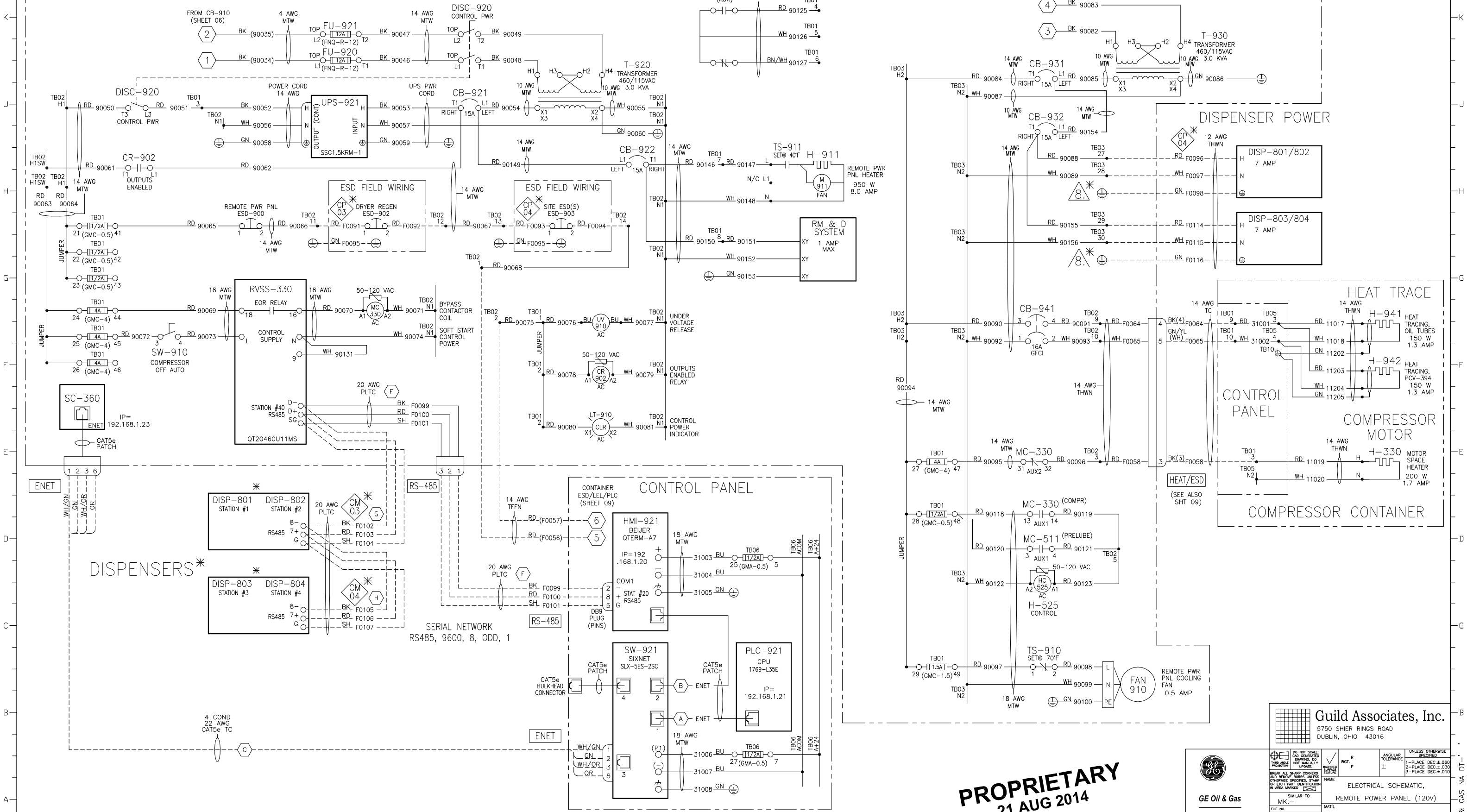
COMPRESSOR CONTAINER

PROPRIETARY 21 AUG 2014
Guild Associates, Inc. 5750 SHIER RINGS ROAD DUBLIN, OHIO 43016
GE Oil & Gas
ELECTRICAL SCHEMATIC, POWER/MOTORS/HEATERS (460V)
MG129-00900 SH06 REV0 SCHEM ELEC Pwr Motor Heatr 082114.dwg



REMOTE POWER PANEL

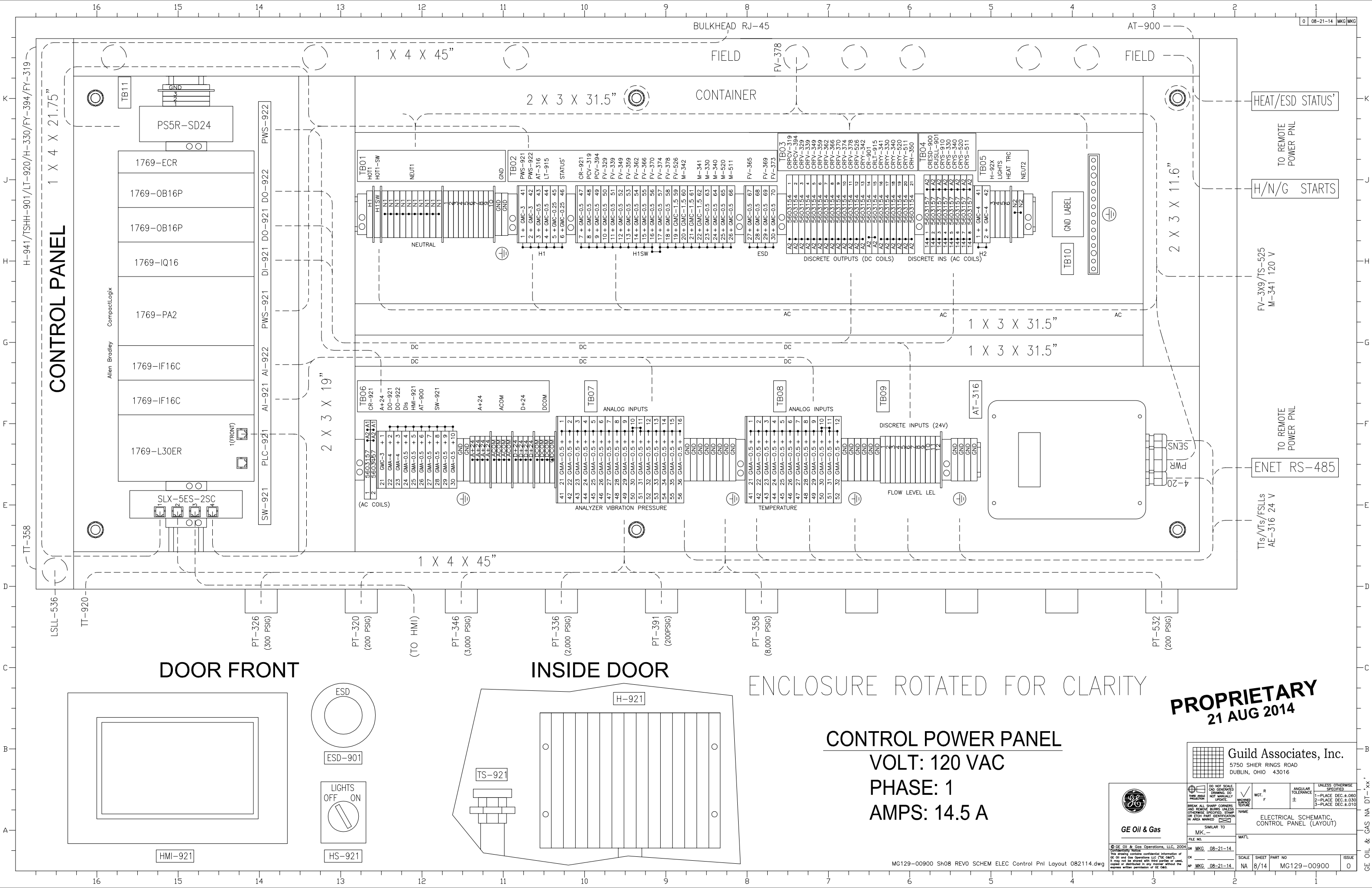
REMOTE POWER PANEL



PROPRIETARY
21 AUG 2014

Guild Associates, Inc.
5750 SHER RINGS ROAD
DUBLIN, OHIO 43016

 GE Oil & Gas	DO NOT SCALE THIS DRAWING UNLESS OTHERWISE SPECIFIED	WGT. R F	ANGULAR TOLERANCE ±	UNLESS OTHERWISE SPECIFIED 1-PLACE DEC.±.060 2-PLACE DEC.±.030 3-PLACE DEC.±.010
	BREAK ALL SHARP CORNERS AND REMOVE BURRS UNLESS OTHERWISE SPECIFIED. STAMP OR ETCH PART IDENTIFICATION IN AREA MARKED	NAME SIMILAR TO MK-	MATL. MKG_08-21-14	SCALE SHEET PART NO NA 7/14 MG129-00900



CONTROL PANEL

DOOR FRONT

INSIDE DOOR

ENCLOSURE ROTATED FOR CLARITY

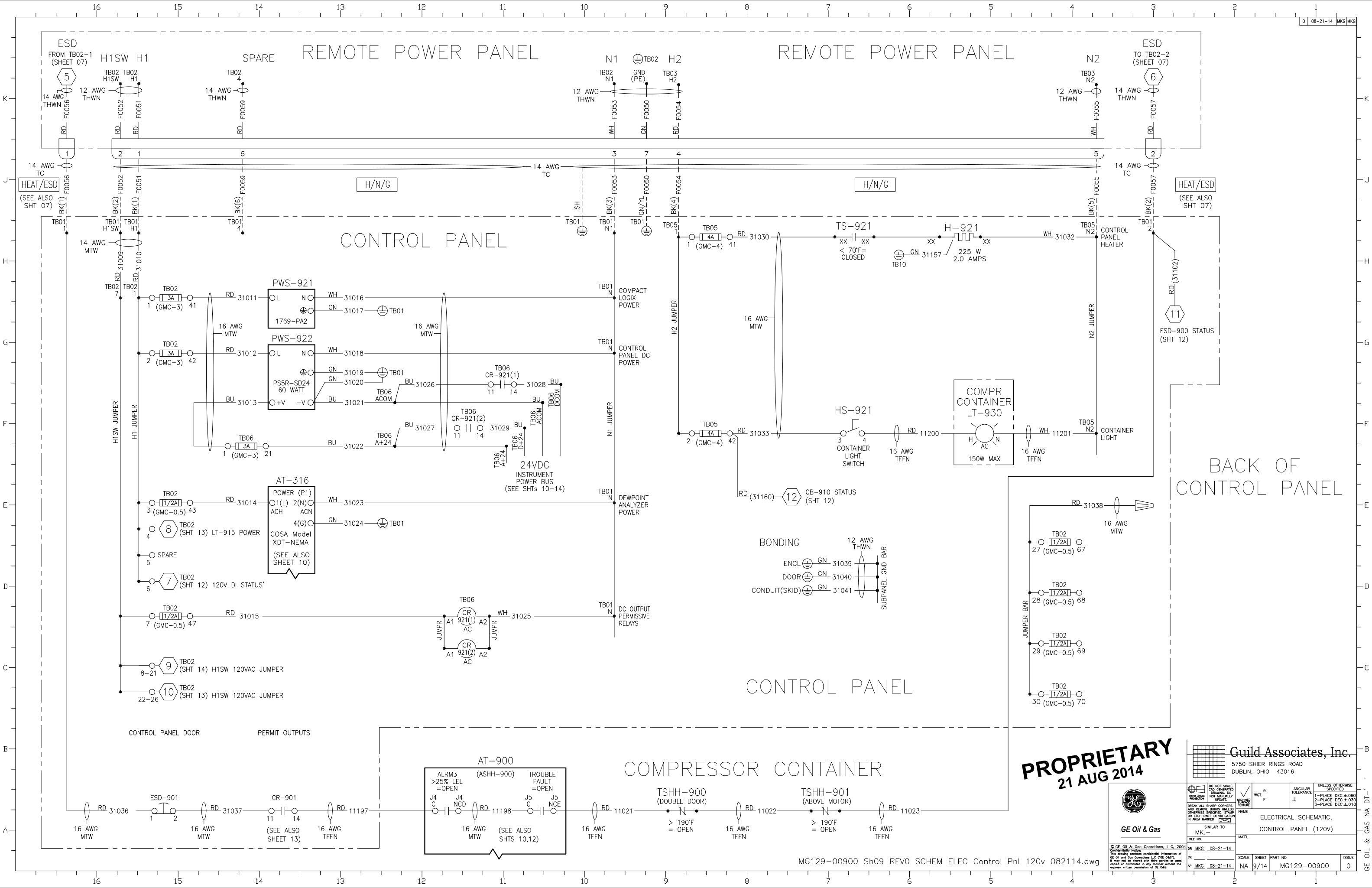
CONTROL POWER PANEL
VOLT: 120 VAC
PHASE: 1
AMPS: 14.5 A

PROPRIETARY
 21 AUG 2014

Guild Associates, Inc.
 5750 SHIER RINGS ROAD
 DUBLIN, OHIO 43016



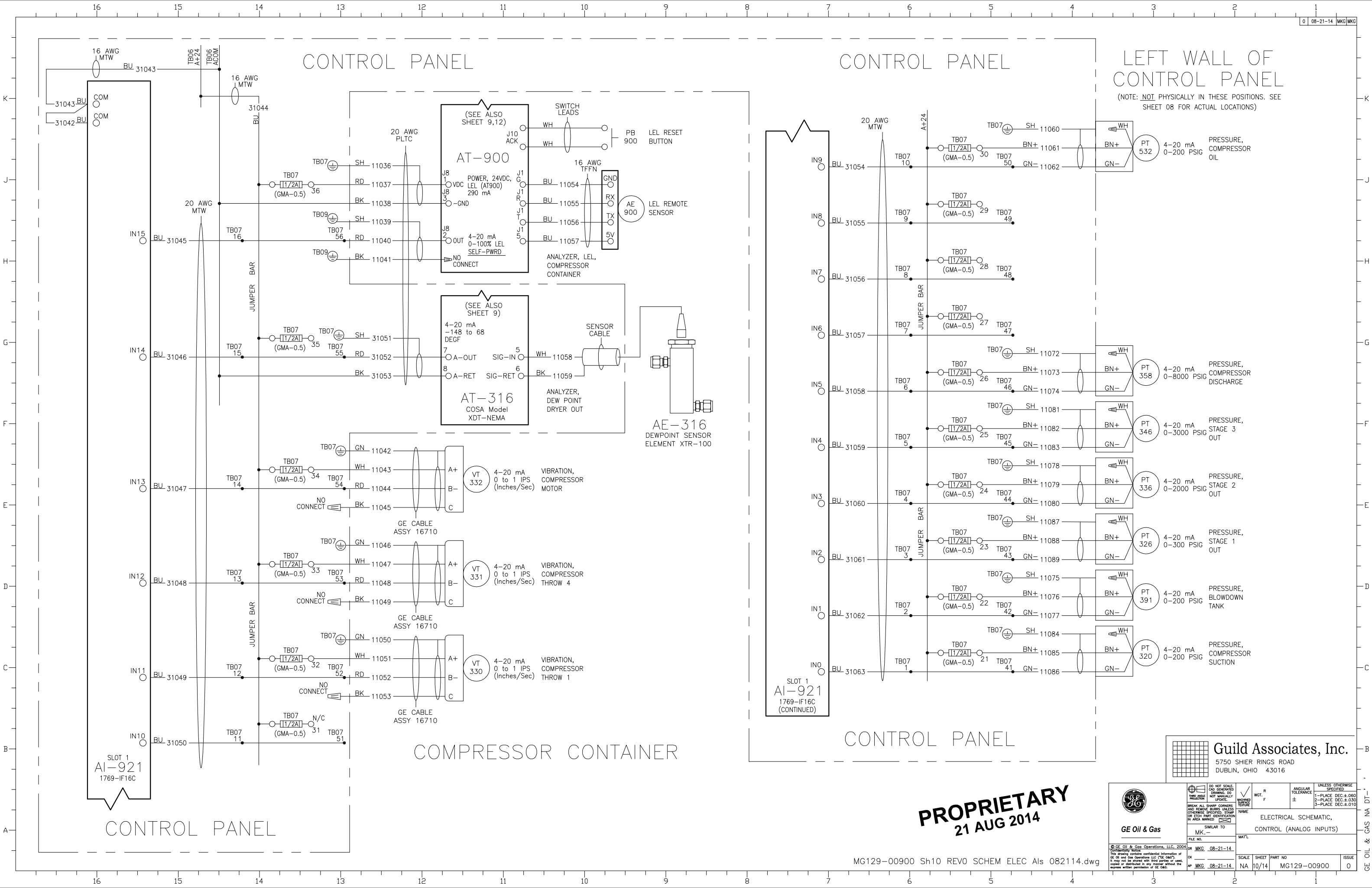
<small>DO NOT SCALE CAD GENERATED DRAWING DO THIS AND NOT MANUALLY PREPARE</small> <small>BREAK ALL SHARP CORNERS AND REMOVE BURRS UNLESS OTHERWISE SPECIFIED. STAMP OR ETCH PART IDENTIFICATION IN AREA MARKED</small>	<small>UNLESS OTHERWISE SPECIFIED</small> 1-PLACE DEC.±.060 2-PLACE DEC.±.030 3-PLACE DEC.±.010
NAME: MK- FILE NO.: MATL.:	WGT. R F ANGLULAR TOLERANCE ± ELECTRIC SCHEMATIC, CONTROL PANEL (LAYOUT)
SIMILAR TO: MK- FILE NO.: MATL.:	SCALE: NA SHEET: 8/14 PART NO.: MG129-00900 ISSUE: 0



PROPRIETARY
21 AUG 2014

Guild Associates, Inc.
5750 SHIER RINGS ROAD
DUBLIN, OHIO 43016

<p>DO NOT SCALE THIS ANGLE OR DIMENSION UNLESS OTHERWISE SPECIFIED</p> <p>1-PLACE DEC.±.060 2-PLACE DEC.±.030 3-PLACE DEC.±.010</p>	<p>UNLESS OTHERWISE SPECIFIED</p> <p>1-PLACE DEC.±.060 2-PLACE DEC.±.030 3-PLACE DEC.±.010</p>
<p>GE Oil & Gas</p> <p>GE</p>	<p>NAME: _____</p> <p>DATE: _____</p> <p>SCALE: _____</p> <p>SHEET: _____</p> <p>PART NO: _____</p> <p>ISSUE: _____</p>
<p>FILE NO: MKG-08-21-14</p> <p>SCALE: NA</p> <p>SHEET: 9/14</p> <p>PART NO: MG129-00900</p> <p>ISSUE: 0</p>	<p>GE OIL & GAS NA DT-1</p>

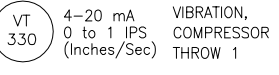
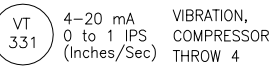
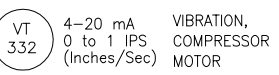
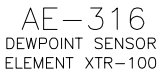
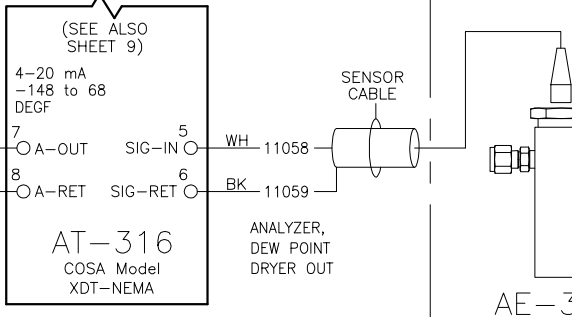
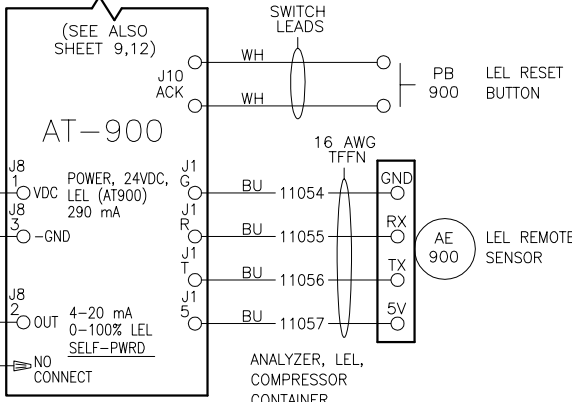


CONTROL PANEL

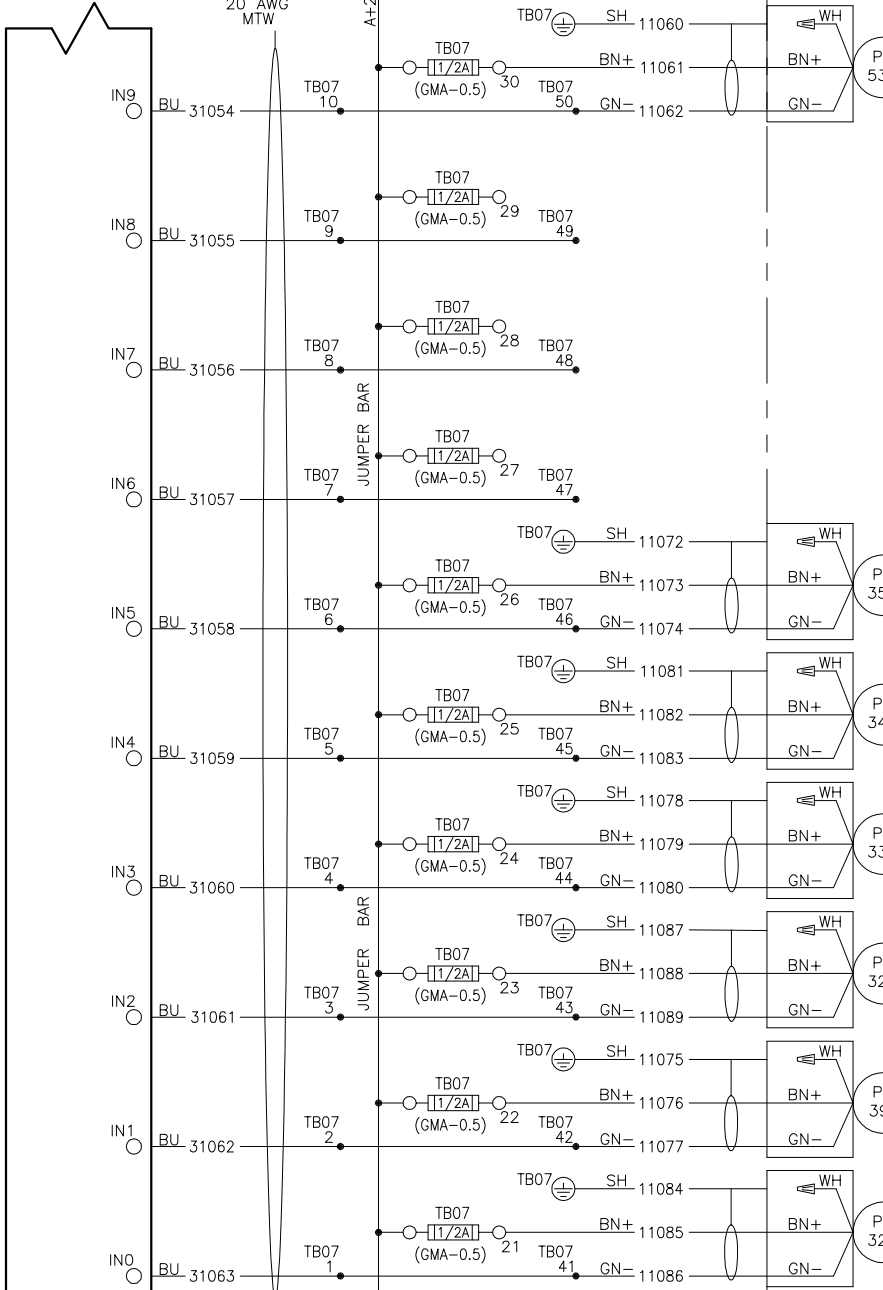
CONTROL PANEL

LEFT WALL OF CONTROL PANEL

(NOTE: NOT PHYSICALLY IN THESE POSITIONS. SEE SHEET 08 FOR ACTUAL LOCATIONS)



COMPRESSOR CONTAINER



SLOT 1 AI-921 1769-IF16C (CONTINUED)

CONTROL PANEL

SLOT 1 AI-921 1769-IF16C

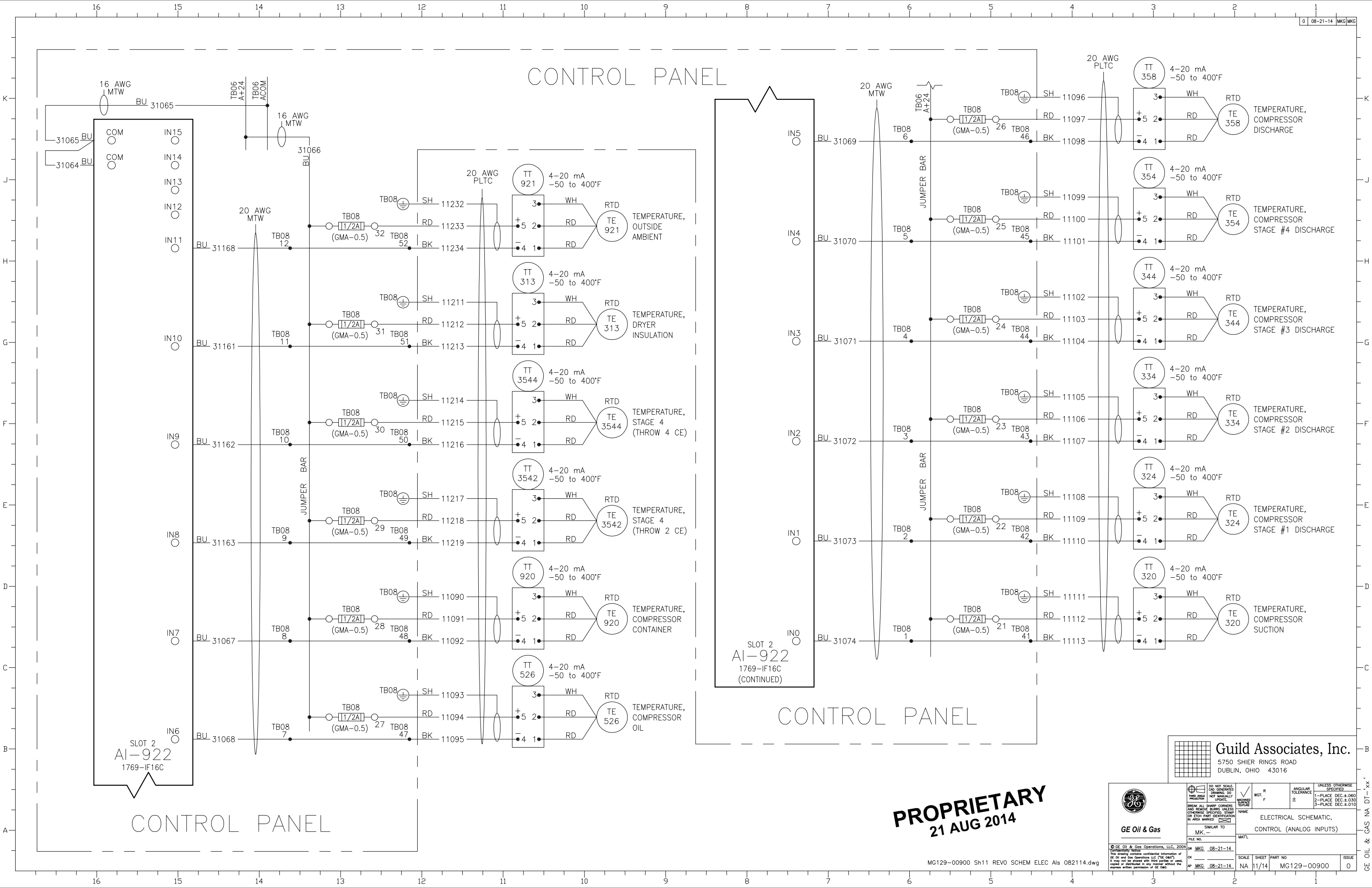
CONTROL PANEL

PROPRIETARY 21 AUG 2014

Guild Associates, Inc. 5750 SHIER RINGS ROAD DUBLIN, OHIO 43016

Table with technical specifications, drawing title 'ELECTRICAL SCHEMATIC, CONTROL (ANALOG INPUTS)', and revision information.

CONTROL PANEL



SLOT 2
AI-922
1769-IF16C
(CONTINUED)

SLOT 2
AI-922
1769-IF16C

PROPRIETARY
21 AUG 2014

Guild Associates, Inc.
5750 SHIER RINGS ROAD
DUBLIN, OHIO 43016

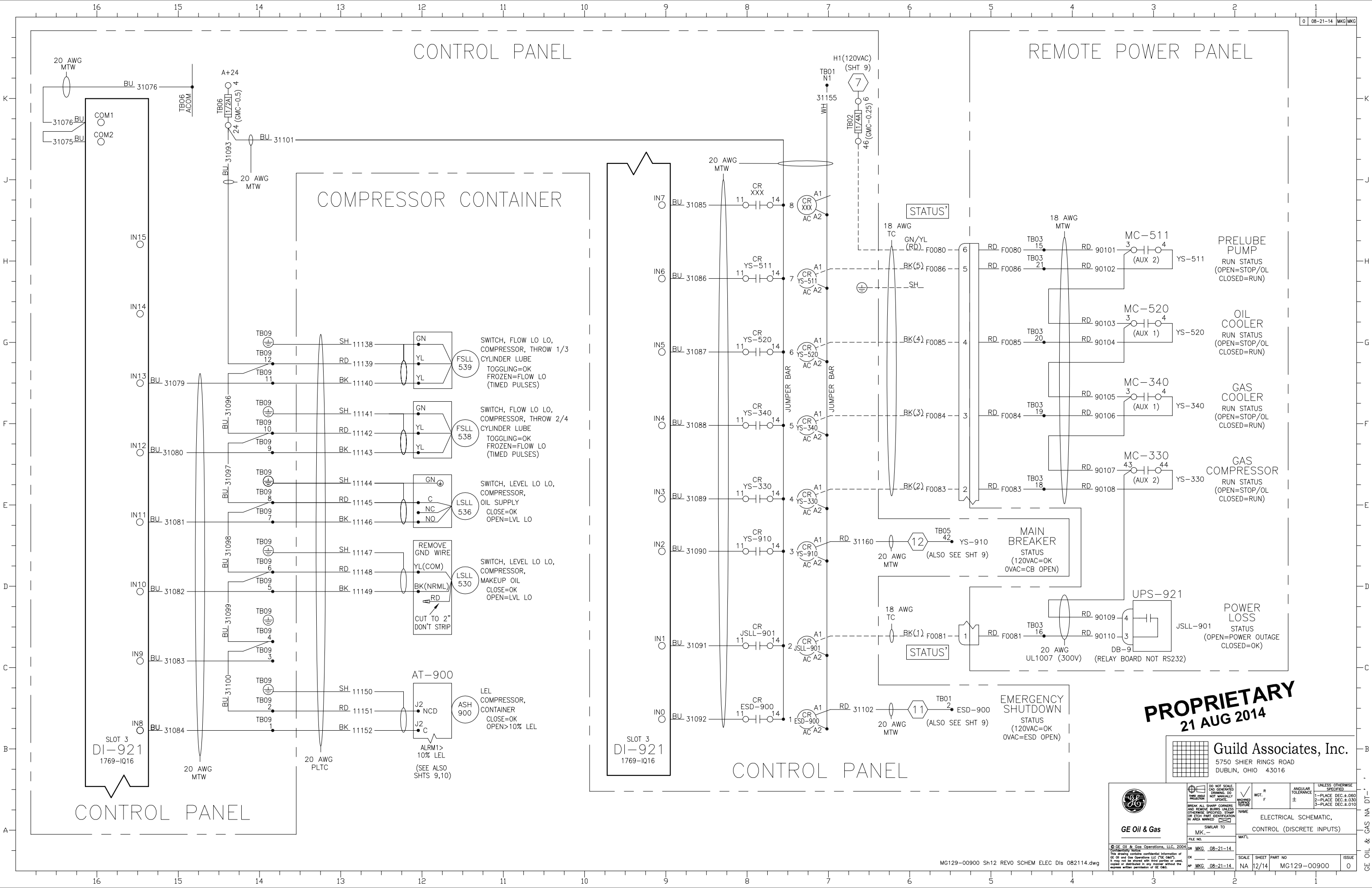
<p>GE Oil & Gas</p>	<p>DO NOT SCALE DIMENSIONS UNLESS OTHERWISE SPECIFIED</p>	<p>WGT. R F</p>	<p>ANGULAR TOLERANCE ±</p>
	<p>THIS ANGLE NOT MANUALLY PROTECTIVE</p>	<p>1-PLACE DEC: ±.060 2-PLACE DEC: ±.030 3-PLACE DEC: ±.010</p>	<p>UNLESS OTHERWISE SPECIFIED</p>
<p>ELECTRICAL SCHEMATIC, CONTROL (ANALOG INPUTS)</p>			
<p>NAME MK</p>	<p>MATL</p>	<p>SCALE SHEET PART NO NA 11/14 MG129-00900</p>	<p>ISSUE 0</p>

CONTROL PANEL

REMOTE POWER PANEL

COMPRESSOR CONTAINER

CONTROL PANEL



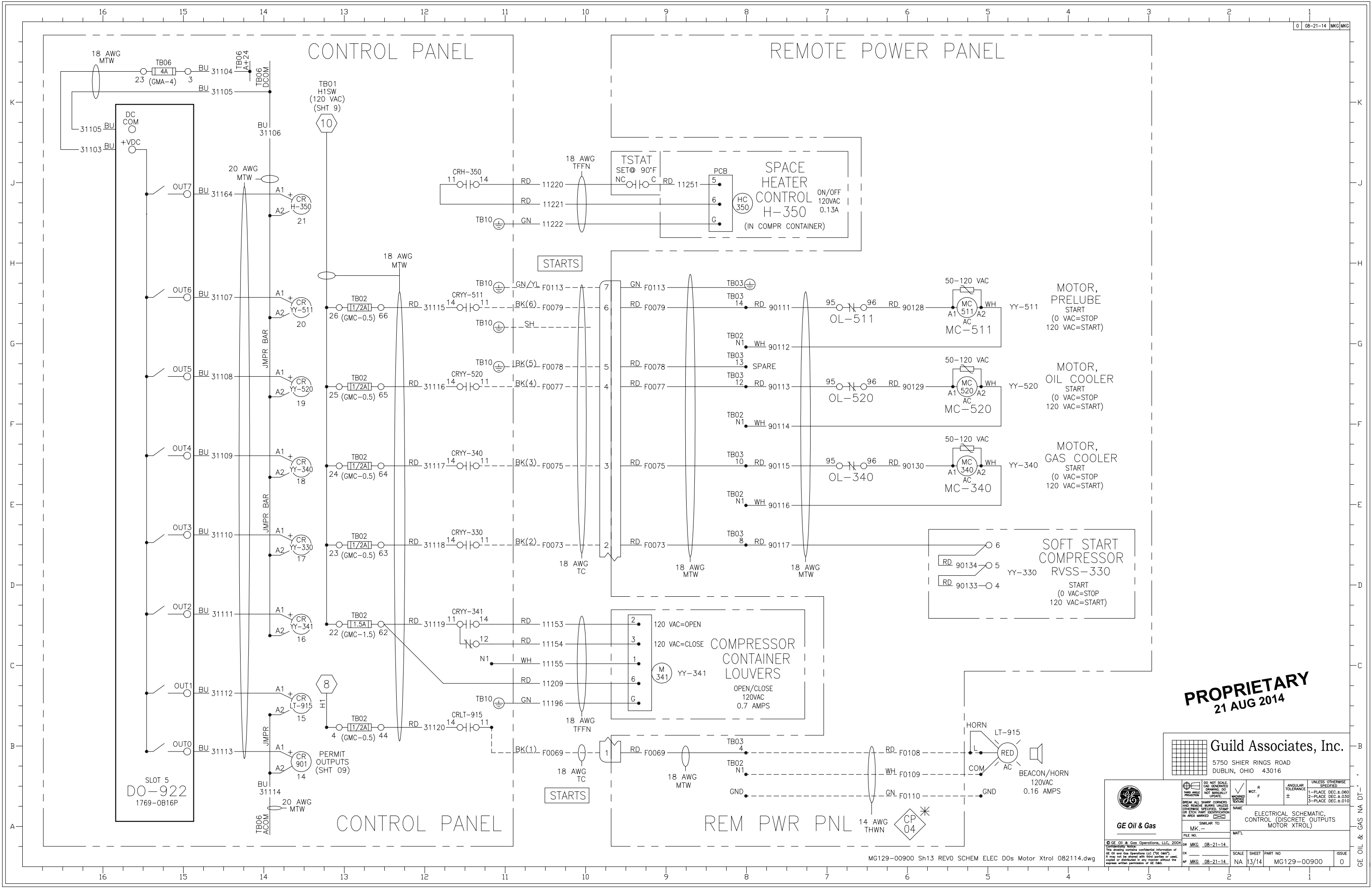
PROPRIETARY
 21 AUG 2014

Guild Associates, Inc.
 5750 SHIER RINGS ROAD
 DUBLIN, OHIO 43016

 GE Oil & Gas	DO NOT SCALE DIMENSIONS UNLESS OTHERWISE SPECIFIED	WGT. R F	ANGULAR TOLERANCE ±
	BREAK ALL SHARP CORNERS AND REMOVE BURRS UNLESS OTHERWISE SPECIFIED. STAMP OR ETCH PART IDENTIFICATION OR AREA MARKING	1-PLACE DEC:±.060 2-PLACE DEC:±.030 3-PLACE DEC:±.010	ELECTRICAL SCHEMATIC, CONTROL (DISCRETE INPUTS)
SIMILAR TO MK. -	FILE NO. MKG_08-21-14	NAME MKG	MATL. NA
SCALE SHEET PART NO MKG_08-21-14 NA 12/14 MG129-00900		ISSUE 0	GE OIL & GAS NA DT

CONTROL PANEL

REMOTE POWER PANEL



PROPRIETARY
21 AUG 2014

Guild Associates, Inc.
5750 SHIER RINGS ROAD
DUBLIN, OHIO 43016

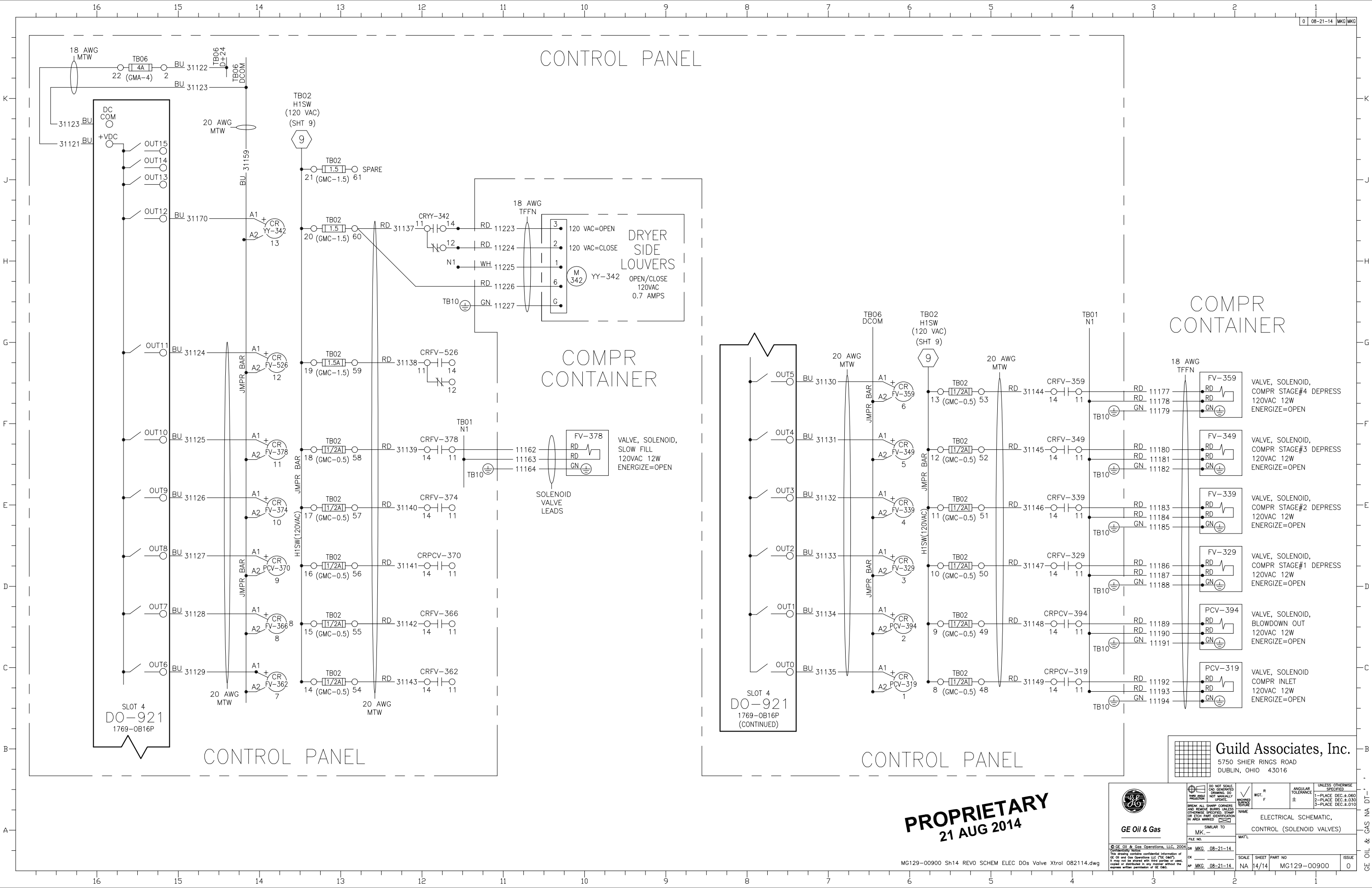
<p>GE Oil & Gas</p>	<p>DO NOT SCALE THIS ANGLE NOT MANUALLY PROTECT</p>	<p>WGT. R F</p>	<p>ANGULAR TOLERANCE ±</p>
	<p>BREAK ALL SHARP CORNERS AND REMOVE BURRS UNLESS OTHERWISE SPECIFIED. STAMP OR EACH PART IDENTIFICATION IN AREA MARKED</p>	<p>NAME</p>	<p>UNLESS OTHERWISE SPECIFIED 1-PLACE DEC.±.060 2-PLACE DEC.±.030 3-PLACE DEC.±.010</p>
<p>FILE NO.</p>	<p>SIMILAR TO</p>	<p>MATL.</p>	<p>ELECTRICAL SCHEMATIC, CONTROL (DISCRETE OUTPUTS MOTOR XTROL)</p>

<p>GE Oil & Gas Operations, LLC, 2004 Confidentiality Notice: This drawing contains confidential information of GE Oil and Gas Operations LLC. THE OWNER It may not be altered with third parties or used, copied or distributed in any manner without the express written permission of GE Oil & Gas.</p>	<p>FILE NO. MKG_08-21-14</p>	<p>SCALE SHEET PART NO NA 13/14 MG129-00900</p>	<p>ISSUE 0</p>
--	----------------------------------	---	--------------------

CONTROL PANEL

COMPR CONTAINER

COMPR CONTAINER



PROPRIETARY
21 AUG 2014

Guild Associates, Inc.
5750 SHIER RINGS ROAD
DUBLIN, OHIO 43016

<p>GE Oil & Gas</p>	<p>DO NOT SCALE CAD GENERATED DRAWING. DO NOT MANUALLY PRODUCE.</p> <p>BREAK ALL SHARP CORNERS AND REMOVE BURRS UNLESS OTHERWISE SPECIFIED. STAMP OR EACH PART IDENTIFICATION OR AREA MARKED.</p>	<p>WGT. R</p> <p>ANGULAR TOLERANCE</p> <p>UNLESS OTHERWISE SPECIFIED</p>
	<p>NAME</p> <p>SIMILAR TO</p> <p>FILE NO.</p>	<p>1-PLACE DEC: ±.060</p> <p>2-PLACE DEC: ±.030</p> <p>3-PLACE DEC: ±.010</p>
<p>ELECTRICAL SCHEMATIC, CONTROL (SOLENOID VALVES)</p>		
<p>SCALE</p> <p>SHEET PART NO</p> <p>ISSUE</p>	<p>MGK_08-21-14</p> <p>NA 14/14 MG129-00900 0</p>	