

P&ID REVISION LOG

REV	SHT	DATE	DESCRIPTION	DR	AP
0	1-7	08-20-14	INITIAL RELEASE	DJM	MKG
0	4	08-25-14	UPDATED VOLTAGE	DJM	MKG

- NOTES: UNLESS OTHERWISE SPECIFIED
- REFER TO SHEET 2/7 FOR P&ID SYMBOLS LEGEND.
 - * INDICATES EQUIPMENT NOT SUPPLIED BY GUILD OR GE.
 - PIPE RUN #s USED:
 FIELD PIPING: F001-F009
 PROCESS (LARGE): 312-350, 354, 358-386 (EVEN #s), 569, 570.
 OIL (LARGE): 510-524, 526-532, 536-540 (EVEN #s)
 OIL (SMALL): 550-558, 560, 561, 564, 566-568, 571-573, 575, 579-582, 584, 586-590.
 MISCELLANEOUS: 609-662, 644, 646, 648-662, 664, 666, 668, 670, 672, 674, 676, 678, 680, 682.
 - SOFTWARE INTERLOCK NUMBERS USED: I100-I105, I107-I141.

5. MINIMUM WALL THICKNESS FOR PIPE & TUBE MUST CONFORM TO THESE TABLES:

MINIMUM PROCESS GAS PIPE WALL THICKNESS		
MATERIAL	SIZE	MIN ANSI SCHED
CARBON STEEL	<=1"	160
CARBON STEEL	>1"	80
CARBON STEEL	>=3"	40
CARBON STEEL	>=10"	STD
STAINLESS STEEL	<=1.5"	40
STAINLESS STEEL	>=2"	10

MINIMUM PROCESS GAS TUBE WALL THICKNESS		
MATERIAL	O.D.	MINIMUM WALL
STAINLESS STEEL	1/4"	0.035"
STAINLESS STEEL	3/8"	0.049"
STAINLESS STEEL	1/2"	0.065"
STAINLESS STEEL	3/4"	0.095"
STAINLESS STEEL	1"	0.109"


- ALL ANSI FLANGES TO BE RF (RAISED FACE).
- ALL TUBE FITTINGS TO BE SWAGelok OR HY-LOK BRAND.
- REFER TO DRAWING MG109-00179 SPECIFICATIONS, PIPING & TUBING FOR DETAILS ON PIPE, TUBING, FLANGES, FITTINGS, AND HARDWARE.

P&ID DRAWING INDEX

SHT	REV	DESCRIPTION	FILENAME
01	0	COVER, INDEX, NOTES	MG129-00010 sh01 REVO P&ID Cover 082014.dwg
02	0	LEGEND	MG129-00010 sh02 REVO P&ID Legend 082014.dwg
03	0	DRYER	MG129-00010 sh03 REVO P&ID Dryer 082014.dwg
04	0	STAGE 1 & 2	MG129-00010 sh04 REVO P&ID Stage1-2 082014.dwg
05	0	STAGE 3 & 4	MG129-00010 sh05 REVO P&ID Stage3-4 082014.dwg
06	0	STORAGE & DISPENSING	MG129-00010 sh06 REVO P&ID Storage 082014.dwg
07	0	COMPRESSOR LUBRICATION	MG129-00010 sh07 REVO P&ID Compr Lube 082014.dwg

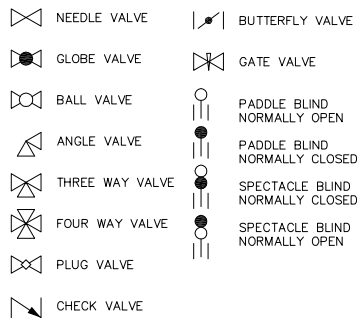
PROPRIETARY
25 AUG 2014

Guild Associates, Inc.
5750 SHIER RINGS ROAD
DUBLIN, OHIO 43016

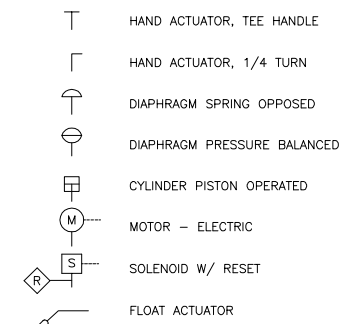
 GE Oil & Gas	<input type="checkbox"/> DO NOT SCALE CAD GENERATED DRAWING. DO THIS ANGLE NOT MANUALLY PRODUCE.	<input checked="" type="checkbox"/> MACHINED SURFACE FINISH	WGT. R F NAME	ANGULAR TOLERANCE ±	UNLESS OTHERWISE SPECIFIED 1-PLACE DEC.±.060 2-PLACE DEC.±.030 3-PLACE DEC.±.010
	BREAK ALL SHARP CORNERS AND REMOVE BURRS UNLESS OTHERWISE SPECIFIED. STAMP OR ETCH PART IDENTIFICATION IN AREA MARKED.				
SIMILAR TO MK. - FILE NO.		MAT'L.		P & ID, COVER SHEET	
© GE Oil & Gas Operations, LLC, 2004 <small>Confidentiality Notice: This drawing contains confidential information of GE Oil & Gas Operations LLC. THE OBJECT. It may not be shared with third parties or used, copied or distributed in any manner without the express written permission of GE O&G.</small>		OR DJM 08-20-14 OK	SCALE SHEET PART NO NA 1/7 MG129-00010	ISSUE A	

NOTES: UNLESS OTHERWISE SPECIFIED

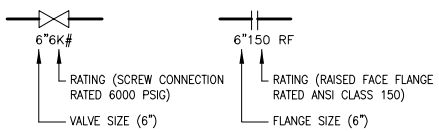
VALVE SYMBOLS



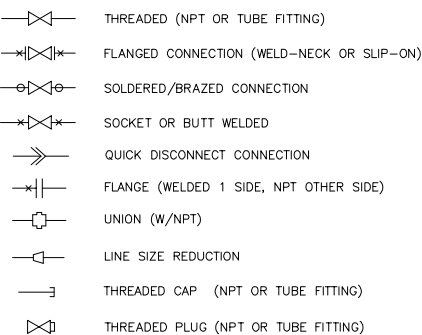
ACTUATOR SYMBOLS



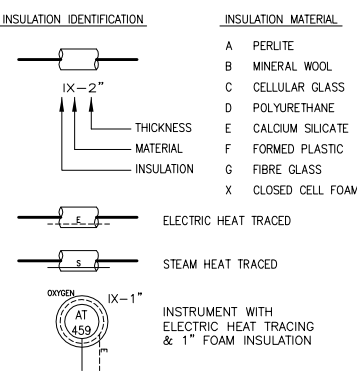
VALVE/FLANGE SIZE/RATING EXAMPLES



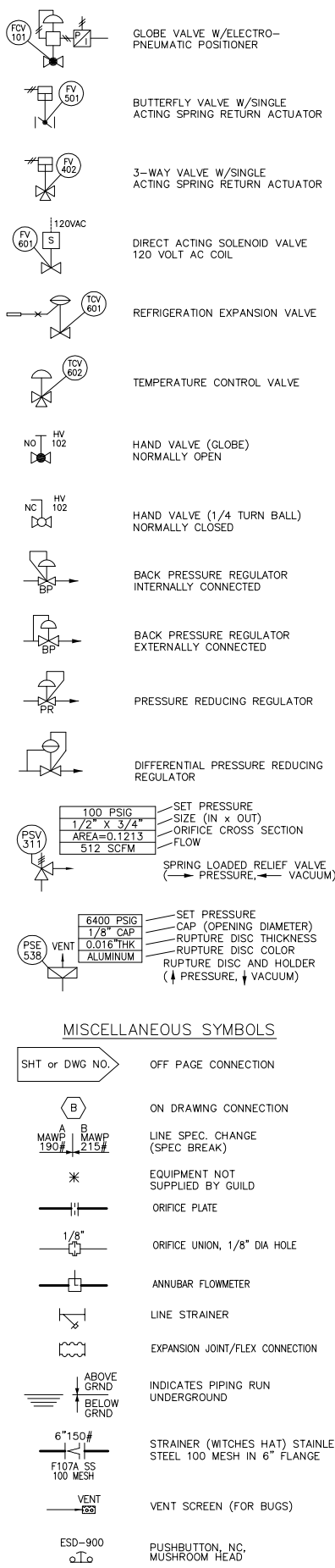
CONNECTION SYMBOLS



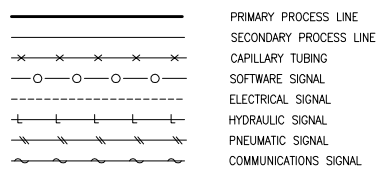
INSULATION/HEAT TRACE



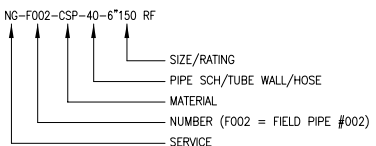
TYPICAL VALVES W/ACTUATORS



LINE SYMBOLS



LINE IDENTIFICATION



LINE SERVICE

- C CONDENSATE
- CHW CHILLED WATER
- CO2 CARBON DIOXIDE
- GW GLYCOL/WATER
- HE HELIUM
- HW HOT WATER
- IA INSTRUMENT AIR
- IA(N) INSTR AIR (NITROGEN)
- LUB LUBRICATING OIL
- MW MAKE-UP WATER
- N NITROGEN
- NG NATURAL GAS
- P PROPANE
- R REFRIGERANT
- W WATER

LINE MATERIAL

- | ABBREVIATION | MATERIAL |
|--------------|---|
| CSP | PIPE, CARBON STEEL, SEAMLESS, ASTM A53/106B |
| SSP304 | PIPE, STAINLESS STEEL 304, ASTM A312 |
| SSP316 | PIPE, STAINLESS STEEL 316, ASTM A312 |
| BRP | PIPE, BRASS, ASTM B687-99 |
| PEP | PIPE, HIGH DENSITY POLYETHYLENE, ASTM F714 |
| CST | TUBE, CARBON STEEL, ASTM A179 |
| SST304 | TUBE, STAINLESS STEEL 304, ASTM A269 |
| SST316 | TUBE, STAINLESS STEEL 316, ASTM A269 |
| COP | TUBE, COPPER (REFRIGERATION), ASTM B280 |
| NY11 | TUBE, NYLON 11 PLASTIC |
| HDPE | TUBE, HIGH DENSITY POLYETHYLENE |

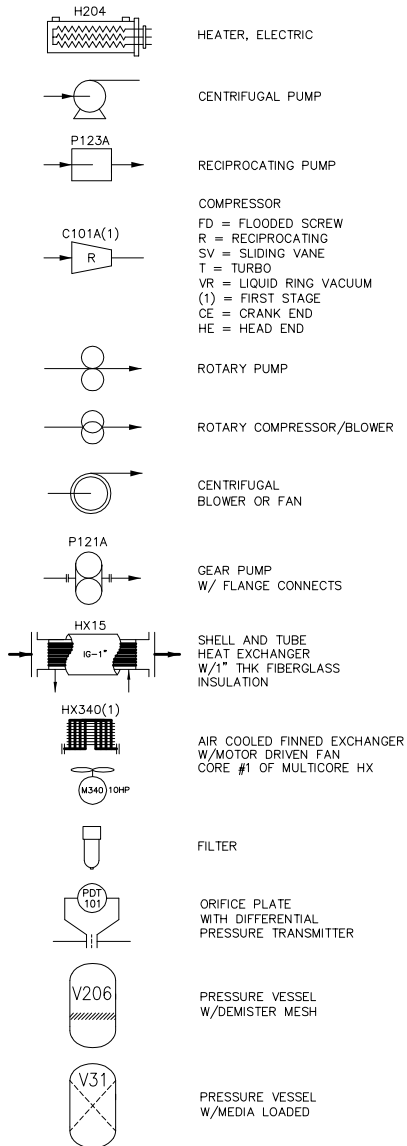
PIPE SCHEDULE

- | DESIG. | PIPE WALL SCHEDULE |
|--------|-------------------------------|
| 10 | SCHEDULE 10 PIPE |
| 40 | SCHEDULE 40 PIPE |
| 80 | SCHEDULE 80 PIPE |
| 160 | SCHEDULE 160 PIPE |
| XS | SCHED EXTRA STRONG PIPE |
| XXS | SCHED EXTRA EXTRA STRONG PIPE |
| SDR | HDPE PIPE SPEC (i.e. SDR17) |
-
- | DESIG. | TUBE WALL THICKNESS |
|--------|---------------------|
| 020 | 0.020" WALL |
| 035 | 0.035" WALL |
| 049 | 0.049" WALL |
| 065 | 0.065" WALL |
| 109 | 0.109" WALL |
| 120 | 0.120" WALL |
| BRD | BRAIDED HOSE |

LINE SIZE/RATING EXAMPLES

- | DESIG. | DESCRIPTION |
|----------|---|
| 3"150 RF | 3" PIPE WITH ANSI CLASS 150 RAISED FACE FLANGES |
| 1/4"6K# | 1/4" THREADED RATED 6000 PSIG PIPE OR TUBE |
| 1"6K SAE | 1" PIPE WITH SAE J518 CODE 62 FLANGES RATED 6000 PSIG |

EQUIPMENT SYMBOLS



EQUIPMENT REFERENCES

- BL BLOWER
- C COMPRESSOR
- CPLG COUPLING (DRIVE)
- E ENGINE
- F FILTER
- GPU GAS PROCESSING UNIT
- HX HEAT EXCHANGER
- H HEATER
- M MOTOR
- MC MOTOR STARTER
- MCC MOTOR CONTROL CENTER
- P PUMP
- PLC PROGRAMMABLE LOGIC CONTROLLER
- RVSS REDUCED VOLTAGE SOFT STARTER
- V VESSEL
- VFD VARIABLE FREQUENCY DRIVE

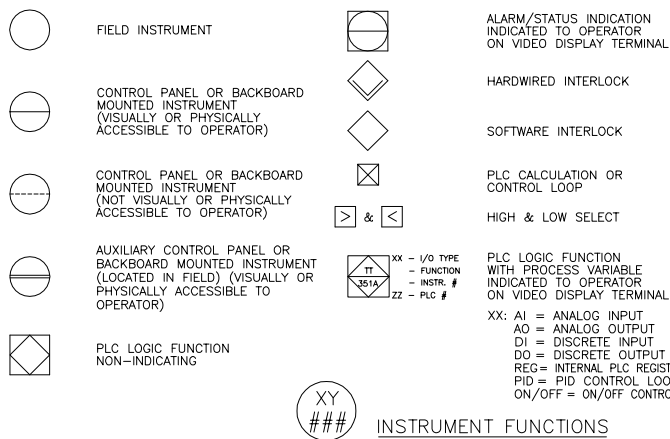
EQUIPMENT DRIVES

- M BELT MOTOR DRIVEN (BELT DRIVE)
- E DIRECT ENGINE DRIVEN (DIRECT COUPLED)

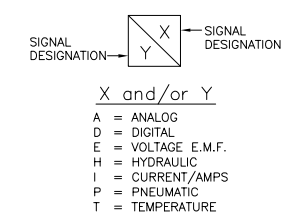
ABBREVIATIONS

- | | | |
|--------------------------|----------------------------------|----------------------------------|
| BP BACK PRESSURE | FP FULL PORT (VALVE) | MSH MOTOR SPACE HEATER |
| CSC CAR SEAL CLOSED | HPV HIGH POINT VENT | NC NORMALLY CLOSED |
| CSO CAR SEAL OPEN | IA INSTRUMENT AIR | NO NORMALLY OPEN |
| DE DE-ENERGIZED | IV INNER VALVE | PR PRESSURE REDUCING |
| DP DIFFERENTIAL PRESSURE | LC LOCK CLOSED | RF RAISED FACE (FLANGE) |
| ESD EMERGENCY SHUTDOWN | LO LOCK OPEN | RTD RESISTANT TEMPERATURE DEVICE |
| FC FAIL CLOSED | LPD LOW POINT DRAIN | SD SHUTDOWN |
| FF FLAT FACED (FLANGE) | MAMP MAX ALLOWED WORKING PRESS | SP STANDARD PORT (VALVE) |
| FL FAIL LAST | MAOP MAX ALLOWED OPERATING PRESS | T.C.T TYPE "T" THERMOCOUPLE |
| FO FAIL OPEN | MDMT MIN DESIGN MATERIAL TEMP | T.C.K TYPE "K" THERMOCOUPLE |

INSTRUMENT SYMBOLS



TRANSDUCER DESIGNATION



INSTRUMENT FUNCTIONS

FIRST LETTER (X)	MEASURED OR INITIATING VARIABLE	MODIFIER	SUCCEEDING LETTERS (Y)		
			READOUT OR PASSIVE FUNCTION	OUTPUT FUNCTION	MODIFIER
A	ANALYSIS		ALARM		
B	BURNER, COMBUSTION		SET POINT		OFF RANGE
C	CONDUCTIVITY (ELECTRICAL)			CONTROL	CLOSED
D	DENSITY	DIFFERENTIAL			
E	VOLTAGE (EMF)		PRIMARY ELEMENT		
F	FLOW RATE	RATIO/FRACTION			
G	AXIAL DISPLACEMENT		GLASS/VIEWING DEVICE		
H	HAND (MANUALLY INITIATED)				HIGH OPEN HIGH TRIP
I	CURRENT (ELECTRICAL)		INDICATE		
J	POWER				
K	TIME OR TIME SEQUENCE	TIME RATE OF CHANGE			
L	LEVEL		LIGHT (PILOT)		LOW CLOSED LOW TRIP
M	MOISTURE OR HUMIDITY	MOMENTARY			
N	NON-REVERSING (CHECK VALVE)		OUTPUT		
O			ORIFICE (RESTRICTION)		OPEN
P	PRESSURE OR VACUUM		TAPPING POINT		
Q	QUANTITY	INTEGRATE OR TOTALIZE			
R	RATIO		RECORD OR PRINT		
S	SPEED OR FREQUENCY	SAFETY		SWITCH	
T	TEMPERATURE			TRANSMIT	
U	MULTIVARIABLE				
V	VIBRATION			VALVE	
W	WEIGHT, FORCE		WELL		
X	UNCLASSIFIED				
Y	STATUS		SOLENOID OPERATED	RELAY OR COMPUTE	
Z	POSITION			DRIVE, ACTUATE OR UNCLASSIFIED FINAL CONTROL ELEMENT	

PROPRIETARY
25 AUG 2014

MG129-00010 sh02 REVA P&ID Legend 082514.dwg

Guild Associates, Inc.
5750 SHER RINGS ROAD
DUBLIN, OHIO 43016

GE Oil & Gas logo and project information including drawing title, scale, sheet number, and revision history.

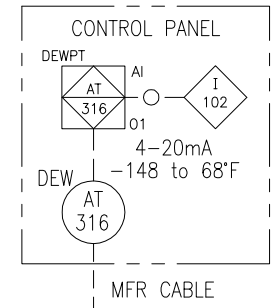
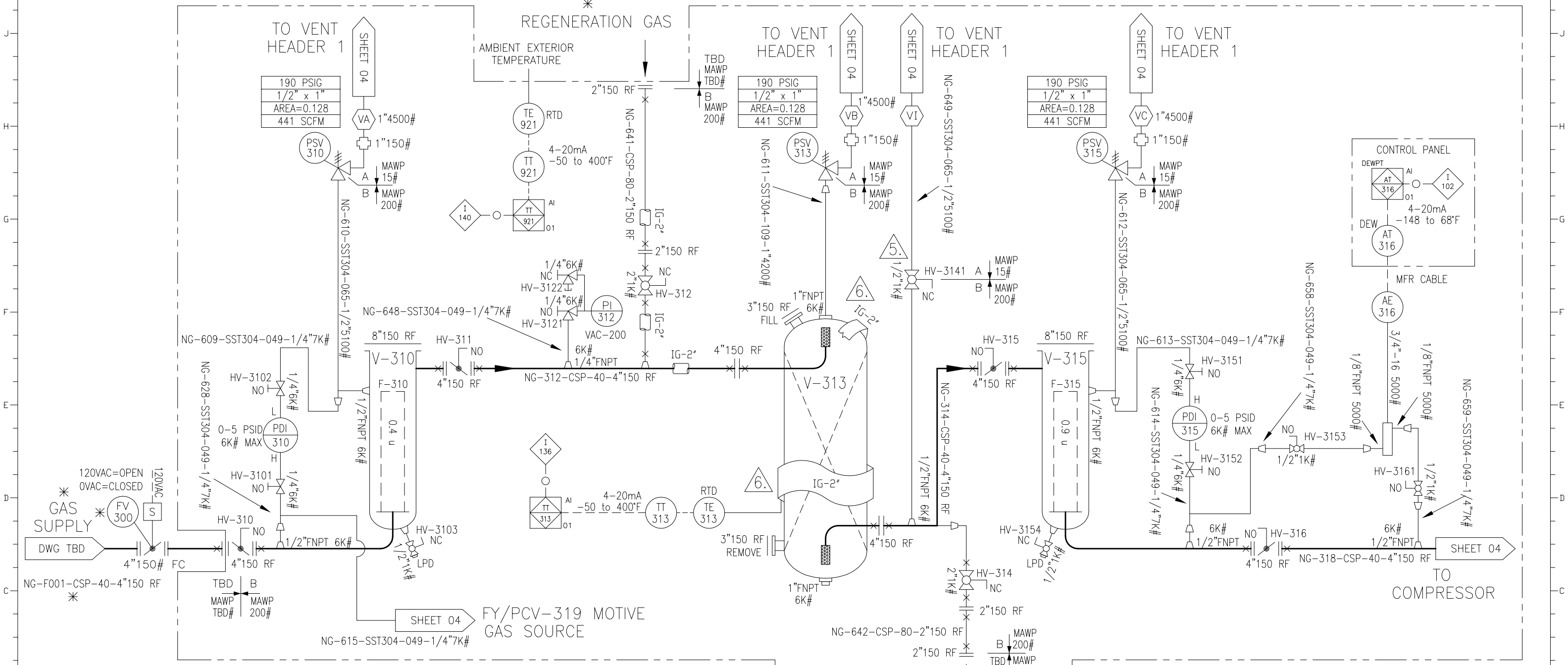
- NOTES: UNLESS OTHERWISE SPECIFIED
1. REFER TO SHEET 2/7 FOR P&ID SYMBOLS LEGEND.
 2. * INDICATES EQUIPMENT NOT SUPPLIED BY GUILD OR GE.
 3. PIPE RUN #s USED: SEE SHT 1/7 NOTE 3.
 4. SOFTWARE INTERLOCK #s USED: SEE SHT 1/7 NOTE 4.
- △ THESE VALVE HANDLES MUST BE LOCKABLE OPEN OR CLOSED.
- △ V-313 INSULATION TO COVER THE TOP HEAD AND THE STRAIGHT SECTION ONLY.

V310, V315 INLET/OUTLET FILTERS

CAPACITY: 14 GALLONS
 SIZE: 8.63" O.D X 60"H
 WT: 156 LBS
 FLANGES: 4"150 RF IN & OUT
 MAWP: 200 PSI @ 250°F
 MDMT: -20°F

V313 DESICCANT VESSEL

CAPACITY: 309 GALLONS
 SIZE: 36" O.D X 87"H
 WT: 4400 LBS (PACKAGE W/DESICCANT CHARGE)
 FLANGES: 4"150 RF IN & OUT
 3"150 RF FILL & REMOVE
 MAWP: 200 PSI @ 400°F
 MDMT: -20°F



Guild Associates, Inc.
 5750 SHER RINGS ROAD
 DUBLIN, OHIO 43016

PROPRIETARY
 25 AUG 2014

 GE Oil & Gas	DO NOT SCALE DIMENSIONS UNLESS OTHERWISE SPECIFIED	UNLESS OTHERWISE SPECIFIED 1-PLACE DEC.#.060 2-PLACE DEC.#.030 3-PLACE DEC.#.010
	NAME: P & ID, DRYER	SCALE: NA
FILE NO.: MKG-08-20-14	SHEET: 3/7	PART NO.: MG129-00010
OR DUM: 08-20-14	ISSUE: A	DATE: 08-20-14

- NOTES: UNLESS OTHERWISE SPECIFIED
- REFER TO SHEET 2/7 FOR P&ID SYMBOLS LEGEND.
 - * INDICATES EQUIPMENT NOT SUPPLIED BY GUILD OR GE.
 - PIPE RUN #s USED: SEE SHT 1/7 NOTE 3.
 - SOFTWARE INTERLOCK #s USED: SEE SHT 1/7 NOTE 4.
- △ SUPPLIED BY GUILD. SHIPPED LOOSE FOR FIELD INSTALLATION BY OTHERS.
- ⊠ REMOVE "WITCHES HAT" AFTER 8 HRS OF COMPRESSOR OPERATION.
- ⊠ THESE VALVES HANDLES MUST BE LOCKABLE OPEN OR CLOSED.
- ⊠ HEAT TRACE & INSULATE.

C-330 COMPRESSOR

MFR: GENERAL ELECTRIC
 MODEL: GEMINI H304
 HP: 400
 FLOW: 875 SCFM @60°F GAS IN @SEA LEVEL & 110°F AMB
 PRESS: 35/4700 PSIG IN/OUT.
 WT: 3,810 LBS (COMPR)

THROW 1&3 CYLINDERS

#1: 9.00" DIAMETER
 MAWP: 300 PSIG @350°F
 MDMT: -4°F
 #3: 5.00" DIAMETER
 MAWP: 1250 PSIG @350°F
 MDMT: -4°F

V-332, V-334 PULSATION BOTTLES

V-332: 6.63" OD x 19" LG
 MAWP: 215 PSIG @350°F
 MDMT: -20°F
 V-334: 6.63" OD x 19" LG
 MAWP: 900 PSIG @350°F
 MDMT: -20°F

V-391 BLOWDOWN TANK

MFR: TRINITY
 MODEL: DWG# TBD
 SIZE: 31.5" O.D x 88" L
 VOLUME: 250 GALS
 WT: 472 LBS/TANK
 MAWP: 250 PSI @125°F
 MDMT: -20°F

HX-340 (CORE 1) GAS COOLER

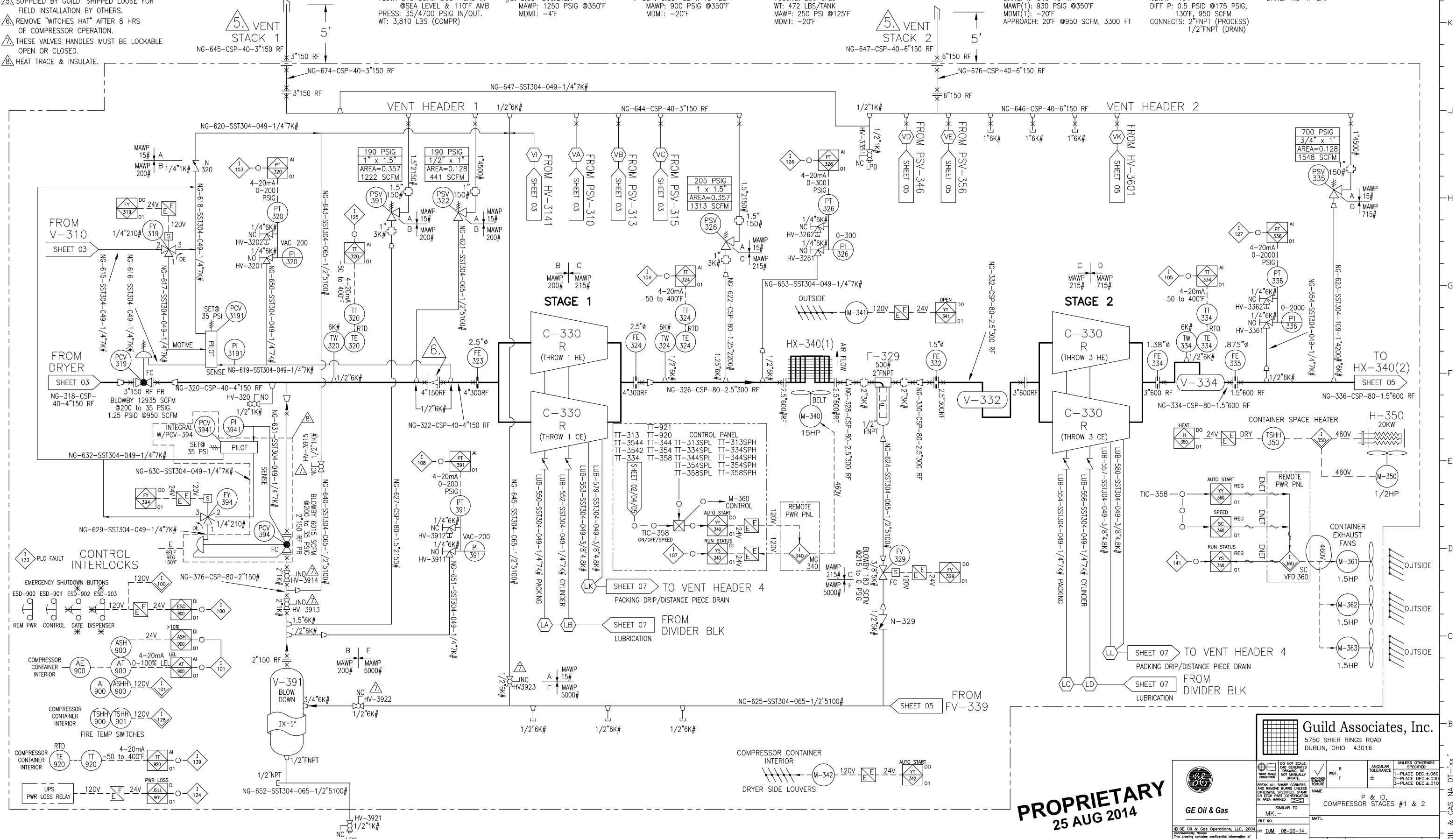
MFR: CUSTOM AIR COOLER
 MODEL: FORCED DRAFT (CUSTOM)
 DUTY(1): BTU/H 223,000
 DRIVE: M-340 15 HP
 MAWP(1): 930 PSIG @350°F
 MDMT(1): -20°F
 APPROACH: 20°F @950 SCFM, 3300 FT

F-329 FILTER

MFR: PARKER
 MODEL: HN8S-10CUN
 MAWP: 500 PSIG
 MDMT: -40°F
 DIFF P: 0.5 PSID @175 PSIG, 130°F, 950 SCFM
 CONNECTS: 2" FNPT (PROCESS)
 1/2" FNPT (DRAIN)

M-361/362/363 EXHAUST FANS

MFR: AEROVENT
 MODEL: 18B110-DDP
 FLOW: (60 HZ) 4,253 CFM EA.
 DRIVE: 1.5 HP EA.



PROPRIETARY
 25 AUG 2014

Guild Associates, Inc.
 5750 SHER RINGS ROAD
 DUBLIN, OHIO 43016

DO NOT SCALE DIMENSIONS UNLESS OTHERWISE SPECIFIED	WGT. R F	ANGULAR TOLERANCE ±	UNLESS OTHERWISE SPECIFIED 1-PLACE DEC.±.060 2-PLACE DEC.±.030 3-PLACE DEC.±.010
GE Oil & Gas	NAME	SCALE	SHEET PART NO
FILE NO.	MAFL	NA	4/7
DATE	MG129-00010	REV A	

- NOTES: UNLESS OTHERWISE SPECIFIED
1. REFER TO SHEET 2/7 FOR P&ID SYMBOLS LEGEND.
 2. * INDICATES EQUIPMENT NOT SUPPLIED BY GUILD OR GE.
 3. PIPE RUN #s USED: SEE SHT 1/7 NOTE 3.
 4. SOFTWARE INTERLOCK #s USED: SEE SHT 1/7 NOTE 4.
- △ THESE VALVE HANDLES MUST BE LOCKABLE OPEN OR CLOSED.

**THROW 2&4
CYLINDERS**

#2&4 CE: 3.00" DIAMETER
MAWP: 2500 PSIG @350°F
MDMT: -4°F
#2&4 HE: 1.50" DIAMETER
MAWP: 6000 PSIG @350°F
MDMT: -4°F

**HX-340 (CORE 2)
GAS COOLER**

MFR: CUSTOM AIR COOLER
MODEL: FORCED DRAFT (CUSTOM)
DUTY(2): BTU/H 272,400
MAWP(2): 1160 PSIG @350°F
MDMT(2): -20°F
APPROACH: 20°F @950 SCFM, 3300 FT

**HX-340 (CORE 3)
GAS COOLER**

MFR: CUSTOM AIR COOLER
MODEL: FORCED DRAFT (CUSTOM)
DUTY(3): BTU/H 275,000
MAWP(3): 2150 PSIG @350°F
MDMT(3): -20°F
APPROACH: 20°F @950 SCFM, 3300 FT

**HX-340 (CORE 4)
GAS COOLER**

MFR: CUSTOM AIR COOLER
MODEL: FORCED DRAFT (CUSTOM)
DUTY(4): BTU/H 293,000
MAWP(4): 5000 PSIG @350°F
MDMT(4): -20°F
APPROACH: 20°F @950 SCFM, 3300 FT

**F-339
FILTER**

MFR: PARKER
MODEL: MN4S-10CUN
MAWP: 800 PSIG
MDMT: -40°F
DIFF P: 0.5 PSID @560 PSIG,
130°F, 950 SCFM
CONNECTS: 1"FNPT (PROCESS)
1/2"FNPT (DRAIN)

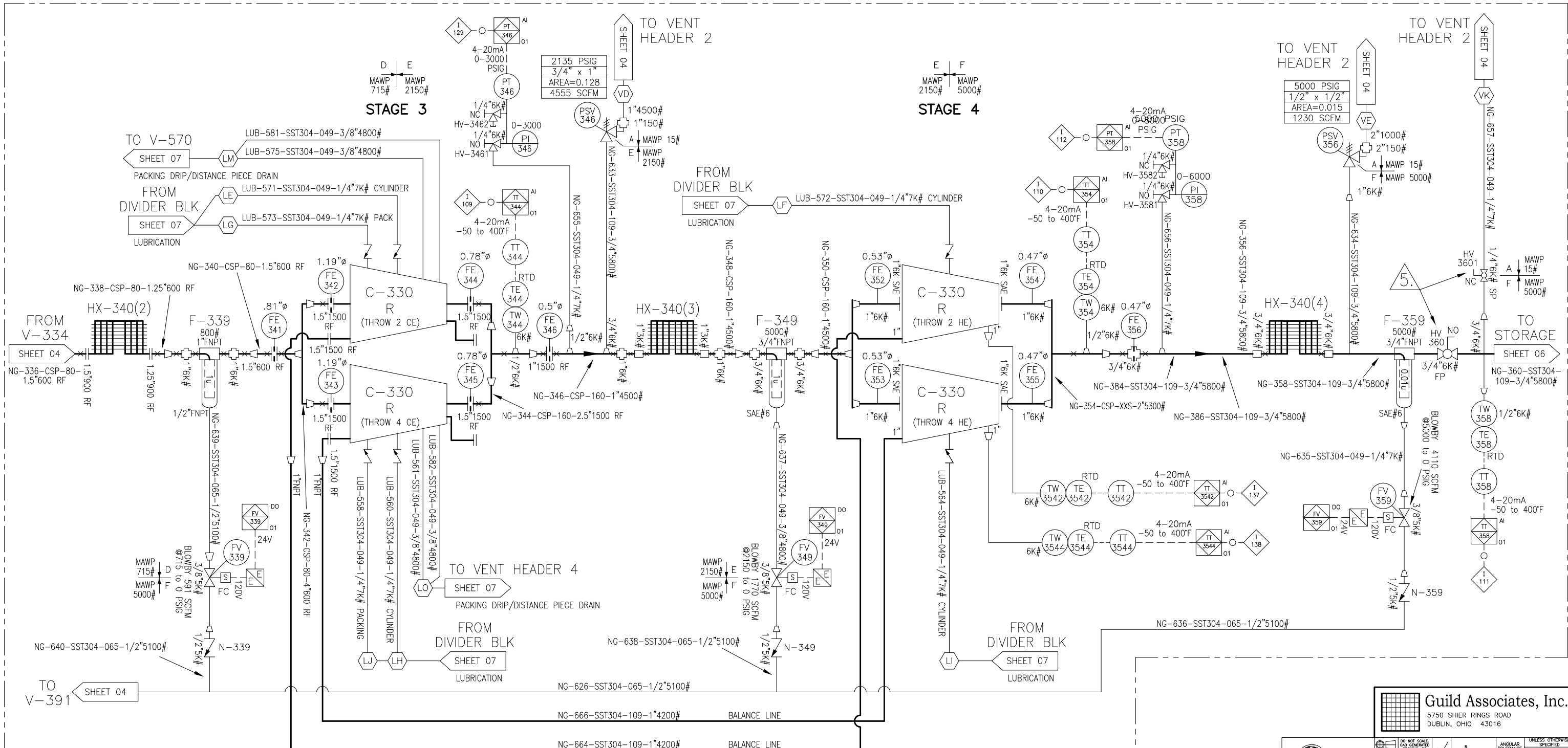
**F-349
FILTER**

MFR: PARKER
MODEL: JN3B-10CN
MAWP: 5000 PSIG
MDMT: -40°F
DIFF P: 0.5 PSID @1780 PSIG,
130°F, 950 SCFM
CONNECTS: 3/4"FNPT (PROCESS)
SAE #6 (DRAIN)

**F-359
FILTER**

MFR: PARKER
MODEL: JN3B-4CN
MAWP: 5000 PSIG
MDMT: -40°F
DIFF P: 1.4 PSID @4700 PSIG,
130°F, 950 SCFM
CONNECTS: 3/4"FNPT (PROCESS)
SAE #6 (DRAIN)

A | 08-25-14 | DIM/MKG
SEE REV LOG ON SHT 1



PROPRIETARY
25 AUG 2014

Guild Associates, Inc.
5750 SHER RINGS ROAD
DUBLIN, OHIO 43016

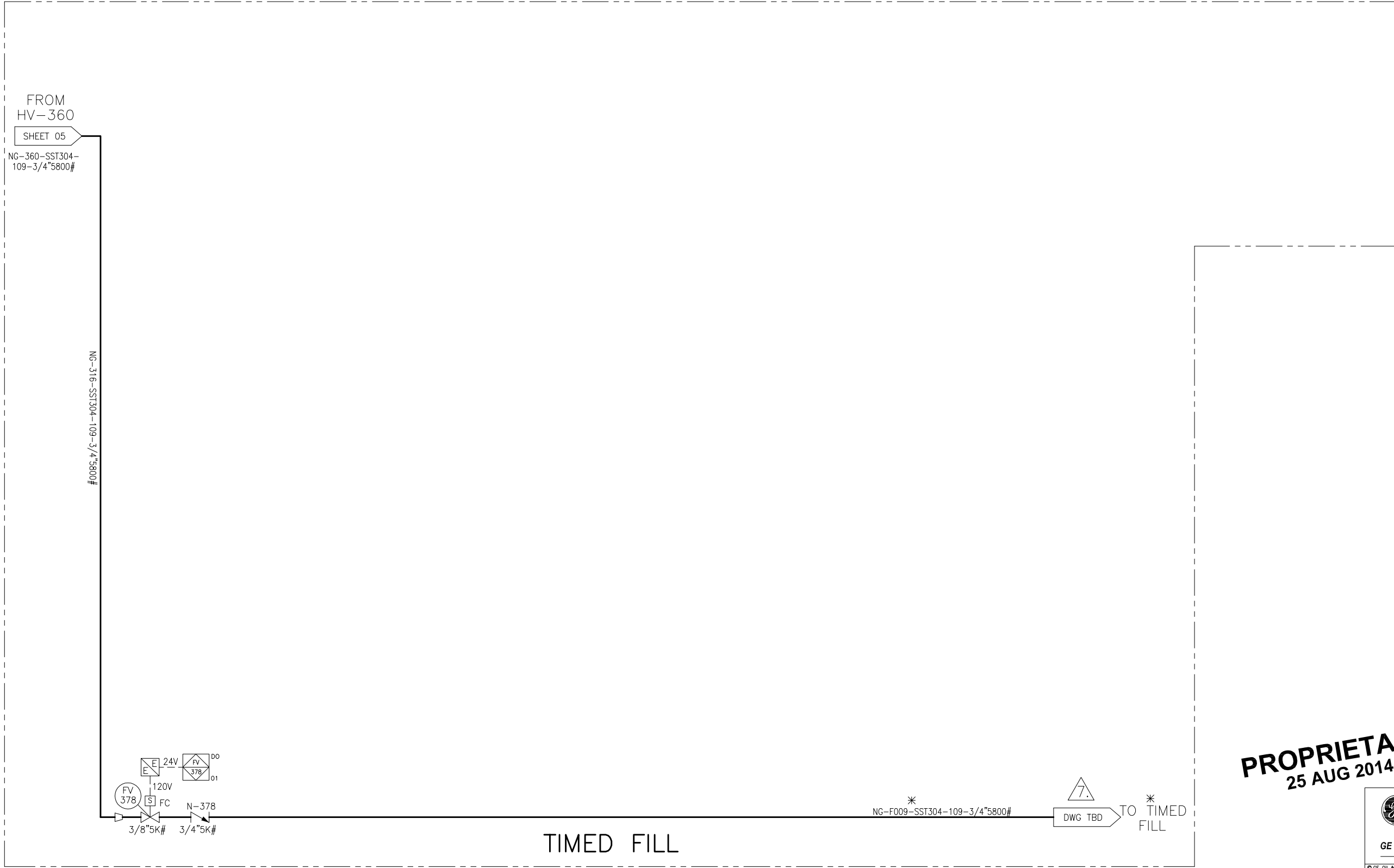
<p>GE Oil & Gas</p>	<p>DO NOT SCALE DIM GENERATED DRAWING TO BE USED FOR CONSTRUCTION</p>	<p>WGT. R F</p>	<p>ANGULAR TOLERANCE ±</p>	
	<p>BREAK ALL SHARP CORNERS AND REMOVE BURRS UNLESS OTHERWISE SPECIFIED. STAMP OR ETCH PART IDENTIFICATION IN AREA MARKED</p>	<p>UNLESS OTHERWISE SPECIFIED 1-PLACE DEC.#.060 2-PLACE DEC.#.030 3-PLACE DEC.#.010</p>	<p>P & ID, COMPRESSOR STAGES #3 & 4</p>	
<p>NAME SIMILAR TO FILE NO. MK-</p>	<p>DATE 08-20-14</p>	<p>SCALE NA</p>	<p>SHEET PART NO 5/7 MG129-00010</p>	<p>ISSUE A</p>

© GE Oil & Gas Operations, LLC, 2004
This drawing contains confidential information of GE Oil & Gas Operations, LLC. THE DRAWING
It may not be shared with third parties or used,
copied or distributed in any manner without the
express written permission of GE O&G.

- NOTES: UNLESS OTHERWISE SPECIFIED
1. REFER TO SHEET 2/7 FOR P&ID SYMBOLS LEGEND.
 2. * INDICATES EQUIPMENT NOT SUPPLIED BY GUILD OR GE.
 3. PIPE RUN #s USED: SEE SHT 1/7 NOTE 3.
 4. SOFTWARE INTERLOCK #s USED: SEE SHT 1/7 NOTE 4.
- △ THESE VALVE HANDLES MUST BE LOCKABLE OPEN OR CLOSED.
△ THESE ITEMS SUPPLIED BY GE ONLY.
△ CAUTION

ANY CONNECTION OF THE CNG IN A BOX TO A SLOW FILL SYSTEM MUST COMPLY WITH ALL APPLICABLE NFPA REQUIREMENTS, INCLUDING NFPA 70 and 52, AND OTHER APPLICABLE CODES. CUSTOMER IS SOLELY RESPONSIBLE FOR REVIEWING AND COMPLYING WITH ALL MANUFACTURE'S OR SUPPLIER'S INSTALLATION INSTRUCTIONS, SELECTING COMPATIBLE EQUIPMENT AND PROPER INSTALLATION. CUSTOMER IS SOLELY RESPONSIBLE FOR ANY LOSSES, DAMAGES, OR CLAIMS RESULTING FROM A SLOW FILL CONNECTION OR FAILURE TO PROPERLY INSTALL A SLOW FILL CONNECTION.

WARNING
FAILURE TO FOLLOW THE DIRECTIONS ABOVE COULD CAUSE A FIRE OR EXPLOSION, RESULTING IN SERIOUS BODILY INJURY OR DEATH OR PROPERTY DAMAGE. PLEASE CONSULT GE OIL AND GAS AT +1 832 978 9780 OR hsr_support@ge.com <mailto:hsr_support@ge.com> IF YOU HAVE QUESTIONS.



PROPRIETARY
25 AUG 2014

Guild Associates, Inc.
5750 SHIER RINGS ROAD
DUBLIN, OHIO 43016

 GE Oil & Gas	DO NOT SCALE CNG GENERATED DRAWING DO NOT MANUALLY PREPARE UNLESS SPECIFIED	WGT. R F	ANGULAR TOLERANCE ±	UNLESS OTHERWISE SPECIFIED 1-PLACE DEC.#.060 2-PLACE DEC.#.030 3-PLACE DEC.#.010
	BREAK ALL SHARP CORNERS AND REMOVE BURRS UNLESS OTHERWISE SPECIFIED. STAMP OR ETCH PART IDENTIFICATION IN AREA MARKED	NAME MAT'L	P & ID, BUFFER/DISPENSE	
SIMILAR TO MK. -	FILE NO. OR DWM 08-20-14	SCALE NA	SHEET PART NO 6/7	ISSUE MG129-00010 A

- NOTES: UNLESS OTHERWISE SPECIFIED
 1. REFER TO SHEET 2/7 FOR P&ID SYMBOLS LEGEND.
 2. * INDICATES EQUIPMENT NOT SUPPLIED BY GUILD OR GE.
 3. PIPE RUN #s USED: SEE SHT 1/7 NOTE 3.
 4. SOFTWARE INTERLOCK #s USED: SEE SHT 1/7 NOTE 4.
 5. SUPPLIED BY GUILD. SHIPPED LOOSE FOR FIELD INSTALLATION BY OTHERS.

M-330 MOTOR
 MFR: GENERAL ELECTRIC
 MODEL: 5KS511XAA231F2
 POWER: 400HP 460V 3PH 497A
 SPEED: 1800 RPM @60 HZ
 FRAME: 5011
 WT: 5500 LBS

P-511 PRELUBE PUMP
 MFR: VIKING
 MODEL: SGO510-GOV-M
 FLOW: 4 GPM @ 50 PSIG & 1000 CST
 DRIVE: M-511 3/4 HP

P-513 OIL PUMP
 MFR: SAUER-DANFOSS
 MODEL: CP 180
 FLOW: 15.7 GPM @ 55 PSIG & 1000 CST
 DRIVE: COUPLED TO COMPR

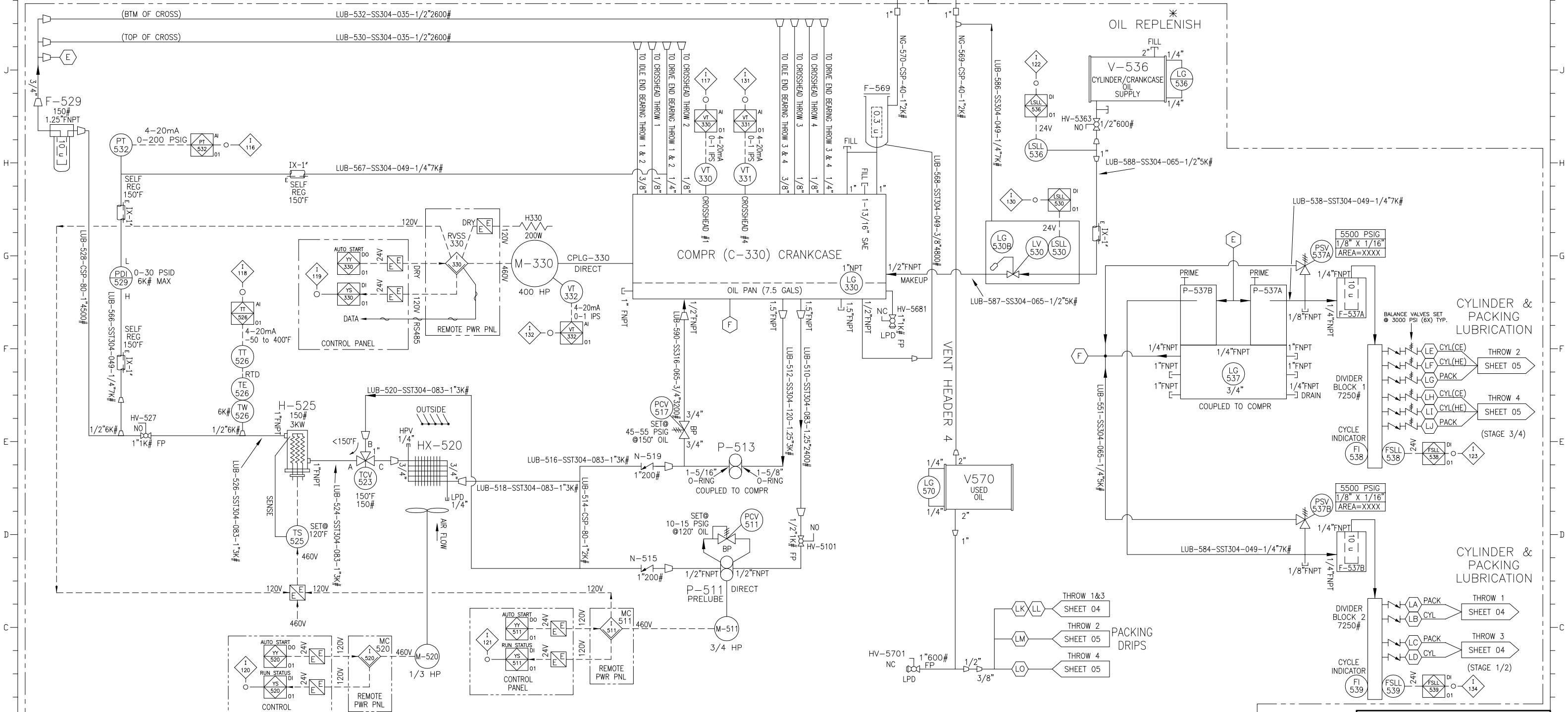
P-537B OIL PUMP
 MFR: PREMIER
 MODEL: GE P/N 408-1622
 FLOW: 3.6-18.4 PPD @400 PSIG
 DRIVE: COUPLED TO COMPR
 MAX VISCOSITY: 1100 CST

P-537A OIL PUMP
 MFR: PREMIER
 MODEL: GE P/N 408-1622
 FLOW: 3.6-18.4 PPD @3260 PSIG
 DRIVE: COUPLED TO COMPR
 MAX VISCOSITY: 1100 CST

HX-520 OIL COOLER
 MFR: AKG
 MODEL: AL8
 DUTY: BTU/H 8,000
 DRIVE: M-520 1/3 HP
 MAWP: 377 PSIG @-20 TO 250°F

H-525 OIL HEATER
 MFR: CHROMALOX
 MODEL: NWHMTO-03-003P-E2XX
 POWER: 3KW 460V 3PH 3.8A
 WT: 40 LBS
 PRESS: 150 PSIG
 TEMP: -20°F TO 250°F

A 08-25-14 DM/MKG
 SEE REV LOG ON SHT 1



V-536, V-570 OIL SUPPLY/USED OIL
 MFR: KENCO
 MODEL: KG16
 SIZE: 14.25"OD x 27.5"L
 CAPACITY: 16 GALS
 CONNECTS: 2" FNPT, 3/4" FNPT
 WT: 20 LBS

F-529 OIL FILTER
 MFR: GE
 MODEL: 1-105296
 LENGTH: 10.7"
 FILTRATION: 10 (u)
 CALAPSE PRESS: 125 PSID

F-569 CRANKCASE BREATHER
 MFR: SOLBERG
 MODEL: HDL
 SIZE: 100
 FILTRATION: 0.3u

LV-530 MAKEUP OIL LEVEL VALVE
 MFR: F.W. MURPHY
 MODEL: LM301-EX
 MIP: 30 PSI
 MCP: 15 PSI

TCV-523 OIL TEMPERATURE CONTROL VALVE
 MFR: FLUID POWER ENERGY
 MODEL: 1010
 MAWP: 150

PROPRIETARY
 25 AUG 2014

Guild Associates, Inc.
 5750 SHER RINGS ROAD
 DUBLIN, OHIO 43016

	DO NOT SCALE THIS DRAWING UNLESS OTHERWISE SPECIFIED	WGT. R F	ANGULAR TOLERANCE ±	UNLESS OTHERWISE SPECIFIED 1-PLACE DEC. #.060 2-PLACE DEC. #.030 3-PLACE DEC. #.010
	BREAK ALL SHARP CORNERS AND REMOVE BURRS UNLESS OTHERWISE SPECIFIED. STAMP OR ETCH PART IDENTIFICATION IN AREA MARKED	NAME MK	MATERIAL NONE	SCALE NA
GE Oil & Gas	SIMILAR TO MK	FILE NO. NONE	DATE 08-20-14	ISSUE A