

BS-5000
BURNER MANAGEMENT SYSTEM
 MODEL NO: ACL 5500
 24 VDC

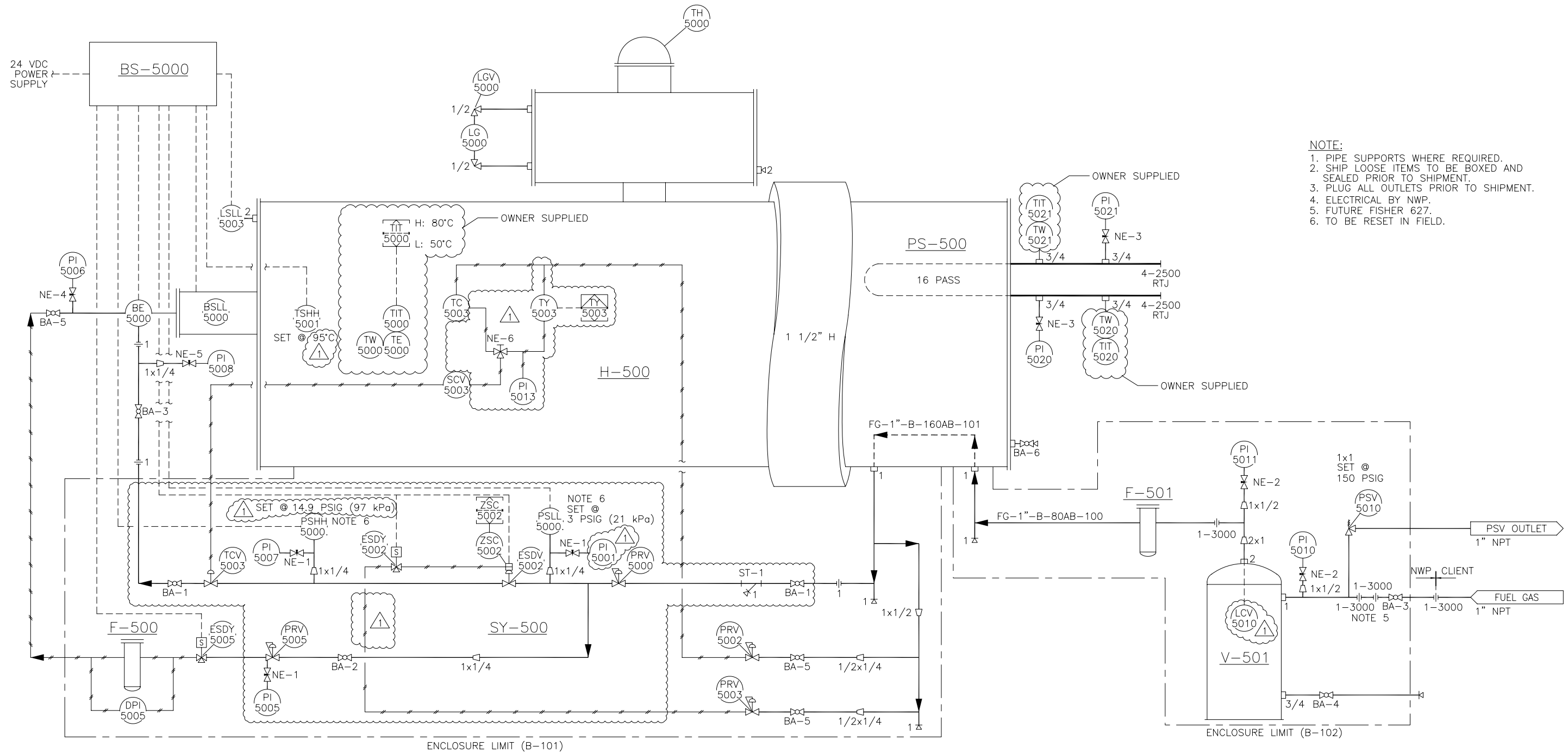
F-500
FILTER
 MFR: HEADLINE
 MODEL NO.: 360A-70
 MAWP: 230 PSI
 1/2" NPT, 25 MICRON CARTRIDGE

H-500
LINE HEATER
 MFR: NWP INDUSTRIES
 SIZE: $\phi 62'' \times 24'$ S/S
 DUTY: 2.5 MMBTU/HR
 SURGE TANK: $\phi 20'' \times 7'$
 FIRETUBE/STACK: $\phi 20'' \times 1/4''$ WT

PS-500
COIL A
 MFR: NWP INDUSTRIES
 MAWP: 4503 PSIG @ 200°F
 XRAY: 100%
 PWHT: YES
 CA: 1/8"

F-501
FILTER
 MFR: HEADLINE
 MODEL NO.: 380A-HP-1
 MAWP: 1000 PSI
 1" NPT, 25 MICRON CARTRIDGE

V-501
FUEL GAS SCRUBBER
 MFR: NWP INDUSTRIES
 SIZE: $\phi 8 \ 5/8'' \times 23''$ S/S
 MAWP: 285 PSIG @ 100°F



- NOTE:**
1. PIPE SUPPORTS WHERE REQUIRED.
 2. SHIP LOOSE ITEMS TO BE BOXED AND SEALED PRIOR TO SHIPMENT.
 3. PLUG ALL OUTLETS PRIOR TO SHIPMENT.
 4. ELECTRICAL BY NWP.
 5. FUTURE FISHER 627.
 6. TO BE RESET IN FIELD.

DOCUMENT NO	DESCRIPTION	REV	DATE	BY	CHK	APP
		1	2010.12.07	JHK		REVISED AS PER RFDC #00323
		0	2010.11.04	JHK	GH	DF
102177	COIL ASSEMBLY	D	2010.11.02	JHK	-	-
101897-4	CNC CUTTING PATTERN	C	2010.10.29	CW	-	-
101897-2	ASSEMBLY	B	2010.10.25	CW	-	-
101897	GENERAL ARRANGEMENT	A	2010.10.18	JHK	-	-
REFERENCE DRAWINGS		DRAWING REVISIONS				

ISSUED FOR CONSTRUCTION

SIGNED: _____

DATE: _____

W.O.: _____

S.O.: _____

ALL DIMENSIONS IN INCHES

NWP INDUSTRIES INC.
 Total oilfield supply.

P.O. BOX 6280, INNISFAIL, AB T4G 1S9
 PH: (403) 227-4100 FAX: (403) 227-4102

THIS DRAWING IS PROPERTY OF NWP INDUSTRIES INC. AND MAY NOT BE REPRODUCED WITHOUT PERMISSION. THIS DRAWING MUST BE RETURNED UPON REQUEST.

APACHE CANADA LTD
 2.5 MMBTU LINEHEATER PACKAGE
 c/w 4"2500 ANSI RTJ 16 PASS COIL
 20" FIRETUBE/STACK, FG SCRUBBER
 PIPING AND INSTRUMENTATION DIAGRAM

DWN: JHK	CHK: GH	APP: CF
DATE: 10.10.18	DATE: 10.11.18	DATE: 10.11.18
SCALE: NTS	DWG: 101897-1	REV: 1
SHEET: 1 OF 3		

TAG#	DESCRIPTION	QTY.	PART#	TAG#	DESCRIPTION	QTY.	PART#
SY-500	VALVE TRAIN - ACL PNEUMATIC VALVE TRAIN ** SEE BELOW**	1	423512 -				
ST-1	Y-STRAINER 1" NPT	1	732029 -				
PRV-5000	MAIN REGULATOR - FISHER 627 1" NPT	1	100692 -				
ESDV-5002 ESDY-5002	MAIN SOLENOID - ACL-ASSV-1P-24 PNEUMATIC, CSA 6.5 WITH PROOF OF CLOSURE, 1" NPT, PNEUMATIC ACTUATOR, 60 PSI SUPPLY, SS BODY, 24 VDC	1	100854 -				
TCV-5003	TEMPERATURE CONTROL VALVE - FISHER 119 PNEUMATIC	1	100696 -				
SCV-5003	SPEED CONTROL VALVE - MFR: SMC, MODEL NO.: AC2000 1/4" NPT	1	100070 -				
PRV-5005	PILOT REGULATOR - FISHER 67CFR	1	973858 -				
PSHH-5000	HIGH FUEL PRESSURE SHUTDOWN SWITCH SET @ 14.9 PSI RISING	1	100695 -				
PSLL-5000	LOW FUEL PRESSURE SHUTDOWN SWITCH SET @ 3 PSI FALLING	1	100694 -				
ESDY-5005	PILOT SOLENOID - ACL-SV-SS0-1-24	1	100855 -				
PI-5000/1/5/7	PRESSURE GAUGES	4	100699 -				
BA-1	BALL VALVE 1" NPT	2	100697 -				
BA-2	BALL VALVE 1/4" NPT	1	100698 -				
NE-1	NEEDLE VALVE 1/4" NPT	3	100864 -				

102177		COIL ASSEMBLY	1	2010.12.07	JHK		REVISED AS PER RFDC #00323
101897-4		CNC CUTTING PATTERN	0	2010.11.04	JHK	GH	ISSUED FOR CONSTRUCTION
101897-2		ASSEMBLY	D	2010.11.02	JHK	-	RE-ISSUED FOR APPROVAL
101897		GENERAL ARRANGEMENT	C	2010.10.29	CW	-	RE-ISSUED FOR APPROVAL
101897		GENERAL ARRANGEMENT	B	2010.10.25	CW	-	RE-ISSUED FOR APPROVAL
101897		GENERAL ARRANGEMENT	A	2010.10.18	JHK	-	ISSUED FOR APPROVAL
DOCUMENT NO	DESCRIPTION	REV	DATE	BY	CHK	APP	
REFERENCE DRAWINGS		DRAWING REVISIONS					

ISSUED FOR CONSTRUCTION


SIGNED: _____

DATE: _____

W.O.: _____

S.O.: _____

ALL DIMENSIONS IN INCHES



NWP INDUSTRIES INC.
Total oilfield supply.

P.O. BOX 6280, INNISFAIL, AB T4G 1S9
PH: (403) 227-4100 FAX: (403) 227-4102

APACHE CANADA LTD
2.5 MMBTU LINEHEATER PACKAGE
c/w 4"2500 ANSI RTJ 16 PASS COIL
20" FIRETUBE/STACK, FG SCRUBBER
PIPING AND INSTRUMENTATION DIAGRAM

DWN: JHK	CHK: GH	APP: CF
DATE: 10.10.18	DATE: 10.11.18	DATE: 10.11.18

SCALE: NTS SHEET: 3 OF 3 DWG: 101897-1 REV: 1

THIS DRAWING IS PROPERTY OF NWP INDUSTRIES INC. AND MAY NOT BE REPRODUCED WITHOUT PERMISSION. THIS DRAWING MUST BE RETURNED UPON REQUEST.