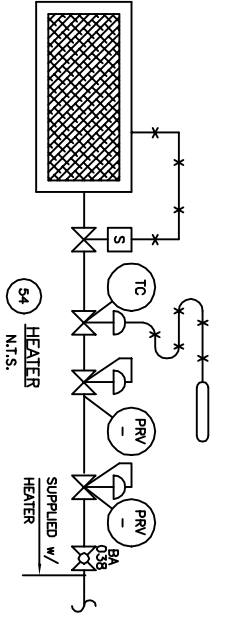


THIS DRAWING IS THE PROPERTY OF NUSCO MANUFACTURING & SUPPLY LTD. AND IS LENT TO THE RECIPIENT FOR CONSTRUCTION OF THE HEATER. THIS DRAWING, THE RECIPIENT AGREES THAT IT SHALL NOT BE USED IN ANY WAY DETRIMENTAL TO THE INTERESTS OF NUSCO MANUFACTURING & SUPPLY LTD. THE RECIPIENT SHALL NOT BE REPRODUCED, COPIED, LENT OR OTHERWISE DISPOSED OF DIRECTLY OR INDIRECTLY WITHOUT THE WRITTEN PERMISSION OF NUSCO MANUFACTURING & SUPPLY LTD.



- NOTES**
- 1) HEATER HOUSING FOR THE HEATER IS MOUNTED UNDER THE TANK C/W SADDLES, BASE DECK, INSULATION & ACCESS DOOR.
 - 2) ACCESS DOOR IS 36" WIDE x 24" HIGH C/W 2" x 3/16" FB.
 - 3) SWITCH WELD TO THE BACK OF THE OPENING.
 - 4) FULLY WELD WEAR PAD, LEAVING A 1" UNWELD PORTION @ LOWEST PART OF SADDLE, AS PER NM-1.
 - 5) USE WELD PROCEDURE NM-1 WITH 3/16" FILET WELD FOR ATTACHMENTS UNLESS OTHERWISE NOTED.
 - 6) SHOP CHECK HEAD DEPTH BEFORE CUTTING M1 NOZZLE MATERIAL.

MATERIAL LIST CONT'D

ITEM	QTY	PART	DESCRIPTION	MATERIAL
39	4	SUPPORT	2" x 2" x 1/4" ANGLE x 5'-3 1/8" LG	A-36
40	1	BASE PLATE	6'-5 3/4" x 3/16" PL x 12'-7" LG	A-36
41	2	BASE MEMBER	66 x 8.28 x 12'-8" LG	40.21-44W
42	2	BASE MEMBER	66 x 8.28 x 5'-3 1/8" LG	40.21-44W
43	2	SADDLE	3'-8 1/2" x 3/8" PL x 6'-11" LG (FILE:2909)	A-36
44	6	WEAR PLATE	4" x 3/16" PL	A-36
45	6	SUPPORT TAB	2" x 1/4" FB x 2" LG	A-36
46	2	WEAR PLATE	11" x 3/8" PL x 7'-8" LG	A-36
47	1	SIDE PLATE	3'-7 7/8" x 10 GA x 11'-5" LG	A-569
48	1	HINGE	FLANG HINGE x 2'-0" LG	
49	1	LATCH	LATCH (DMG. SS-LTH-A)	
50	2	DOOR SUPPORT	2" x 3/16" FB x 3'-2" LG	A-36
51	2	DOOR SUPPORT	2" x 3/16" FB x 1'-10" LG	A-36
52	1	HEATER SUPP.	HEATER STAND #1 (DMG. SS-HTR-A)	
53	1	SET CABLE BRKT.	STD HEATER CABLE BRACKET (DMG. BRKT-J)	
54	1	HEATER	CATALYNE HEATER 12,000 Btu c/w GRILL REGULATOR & TEMP. CONTROL / 12 VOLT c/w START CABLES	
56	2	RIB	7 5/8" x 3/8" PL x 1'-11" LG	A-36

NOZZLE SCHEDULE

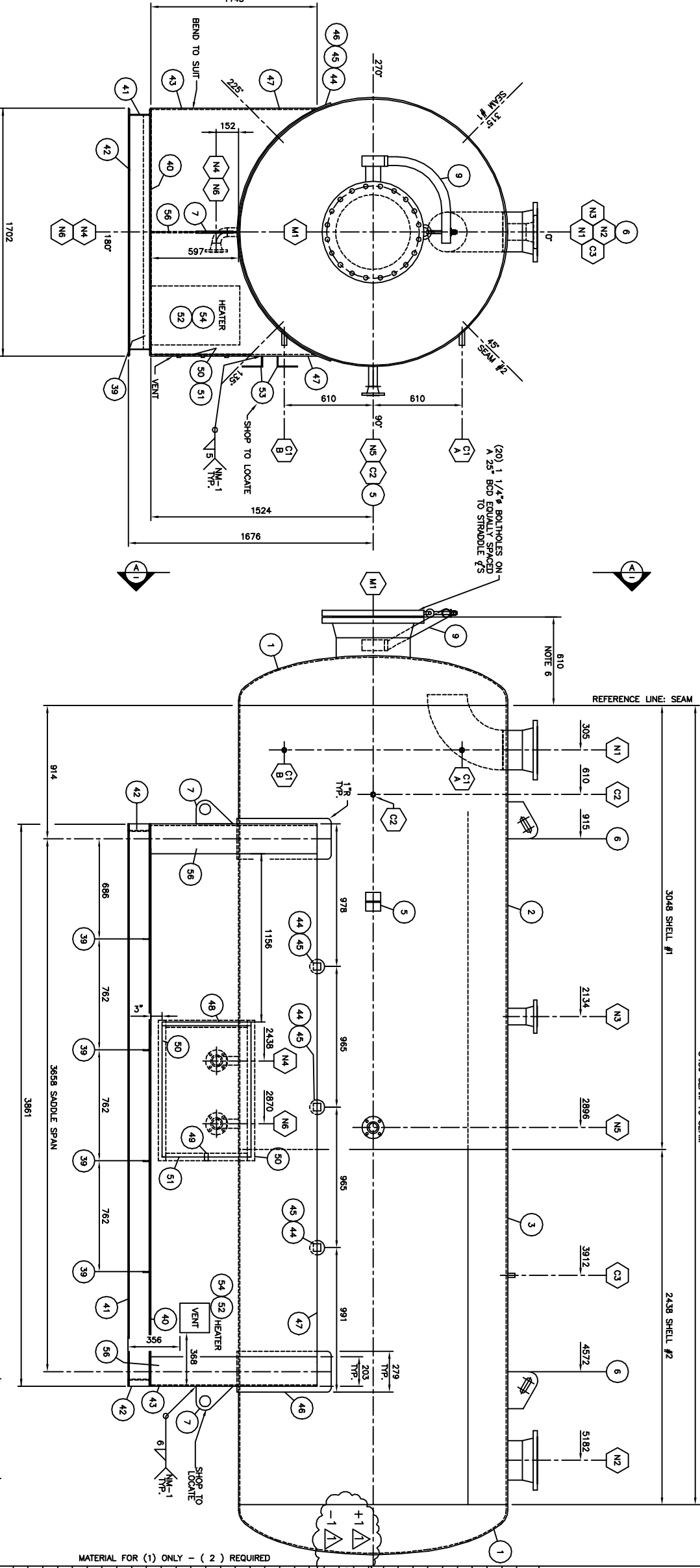
MARK	SIZE	RATING	TYPE	EXTERNAL	INTERNAL	INLET c/w DEFLECTOR	SERVICE
N1	10"	150#	RFNM	SHOWN	N/A		
N2	10"	150#	RFNM	N/A	N/A		
N3	4"	150#	RFNM	N/A	N/A		
N4	2"	150#	RFNM	N/A	N/A		
N5	2"	150#	RFNM	N/A	N/A		
N6	2"	150#	RFNM	N/A	N/A		
C1 A/B	3/4"	3000#	CR/LG	N/A	N/A		LG
C2	3/4"	3000#	CR/LG	N/A	N/A		TI
C3	3/4"	3000#	CR/LG	N/A	N/A		LT BALANCE LINE
M1	20"	150#	RFNM	N/A	N/A		MANWAY/CLEANOUT c/w BLIND & DAWT

DESIGN DATA

NOZZLE	REPAID	PROG'N	WELD	WELD SIZE	ITEM NO.'S
SCH STD	N/A	N/A	5/16/1/16"	A B C D	16.21,28
SCH STD	N/A	N/A	5/16/1/16"		16.22
SCH STD	N/A	N/A	5/16/1/16"		17.23
SCH STD	N/A	N/A	5/16/1/16"		18.25,27
SCH STD	N/A	N/A	5/16/1/16"		18.24
SCH STD	N/A	N/A	5/16/1/16"		18.25,27
SCH STD	N/A	N/A	5/16/1/16"		11
SCH STD	N/A	N/A	5/16/1/16"		10
SCH STD	N/A	N/A	5/16/1/16"		10
SCH STD	N/A	N/A	5/16/1/16"		9.14,15,20,30,32

BUILT ACCORDING TO NUSCO LATEST EDITION CONSTRUCTION STANDARDS

DESIGN PRESSURE: 345 PSIG (50 PSIG)
 MAX. OPERATING PRESS.: 14.9 PSIG
 HYDRO TEST: 517 PSIG (75 PSIG)
 RADIOGRAPHY: NONE
 SHIPPING WEIGHT: 10,500 LBS
 VOLUME: 100 BBL.
 LABELLED: NONE
 SERVICE: NONE
 CORROSION ALLOWANCE: 1/16"
 SURFACE PREP - INTERNAL: NONE
 SURFACE PREP - EXTERNAL: COMMERCIAL BLAST AS PER SSPC-SP#6
 INSULATION: (1) COAT OF BAR-OK 752 PRIMER
 (2) COATS OF BLACK INSULTRAL HI-TEMP ENAMEL
 2" THK SPRAY-ON URETHANE INSULATION c/w (2) COATS OF BLACK SURFACE SEALANT ON THE ENCLOSURE AND THE UNDERSIDE OF THE SMD



MATERIAL FOR (1) ONLY - (2) REQUIRED

ITEM	QTY	PART	DESCRIPTION	MATERIAL
1	2	HEAD	72" ID x 3/8" NOM THK F&D c/w 2" SF	A-516-70N
2	1	SHELL	72" ID x 3/8" THK x 10'-0" LG	A-516-70N
3	1	SHELL	72" ID x 3/8" THK x 8'-0" LG	A-516-70N
4	1	NAME PLATE	STD NAME PL. BRACKET (DMG. BRKT-D) c/w NAME PL	
5	2	LIFT LUG	STD FROD LIFT LUG w/ INSULATION (DMG. LG-FRO-D) FILE:1299	
7	2	TE-DOWN LUG	STD TE-DOWN LUG (DMG. LG-FRO-C) FILE:1600	
8	1	DAWT	STD DAWT (DMG. SS-DW-A)	
9	2	COUPLING	3/4" 3000# RL NPT COUPLING x 4" LG	A-105N
10	2	COUPLING	3/4" 3000# RL NPT COUPLING x 6" LG	A-105N
11	2	COUPLING	3/4" 3000# RL NPT COUPLING x 6" LG	A-105N
12	1	FLANGE	20" 150# SCH STD RFNM FLANGE	A-105N
13	1	FLANGE	20" 150# SCH STD RFNM FLANGE	A-105N
14	1	FLANGE	20" 150# SCH STD RFNM FLANGE	A-105N
15	1	FLANGE	20" 150# RF BLIND FLANGE	A-105N
16	2	FLANGE	10" 150# SCH STD RFNM FLANGE	A-105N
17	1	FLANGE	4" 150# SCH STD RFNM FLANGE	A-105N
18	3	FLANGE	2" 150# SCH STD RFNM FLANGE	A-105N
19	1	PIPE	20" SCH STD SMLS PIPE x 6 1/4" LG (SHOP CHECK)	A-1068
20	1	PIPE	10" SCH STD SMLS PIPE x 5 1/2" LG	A-1068
21	1	PIPE	10" SCH STD SMLS PIPE x 5 1/4" LG	A-1068
22	1	PIPE	4" SCH STD SMLS PIPE x 5 3/4" LG	A-1068
23	1	PIPE	2" SCH STD SMLS PIPE x 6 1/4" LG	A-1068
24	1	PIPE	2" SCH STD SMLS PIPE x 3 3/4" LG	A-1068
25	2	PIPE	2" SCH STD SMLS PIPE x 3 3/4" LG	A-1068
26	2	PIPE	2" SCH STD SMLS PIPE x 3 3/4" LG	A-1068
27	2	ELBOW	2" SCH STD 90° BW LR ELBOW	A-234-WPB
28	1	ELBOW	10" SCH STD 90° BW LR ELBOW	A-234-WPB
29	1	GASKET	20" 150# RF x 1/8" THK FLEXIBAL GASKET	316 SS
30	1	GASKET	20" 150# RF x 1/8" THK FLEXIBAL GASKET	316 SS
31	1	BOLTING	1 1/8" x 6 1/4" LG STUDS c/w (2) NUTS EA	A-193-B/M
32	20	BOLTING	1 1/8" x 6 1/4" LG STUDS c/w (2) NUTS EA	A-193-B/M
33	34	BOLTING	3/4" x 3" LG STUDS c/w (2) NUTS EA	A-193-B/M
34	34	BOLTING	3/4" x 3" LG STUDS c/w (2) NUTS EA	A-193-B/M
35	35	BOLTING	3/4" x 3" LG STUDS c/w (2) NUTS EA	A-193-B/M
36	36	BOLTING	3/4" x 3" LG STUDS c/w (2) NUTS EA	A-193-B/M
37	37	BOLTING	3/4" x 3" LG STUDS c/w (2) NUTS EA	A-193-B/M
38	38	BOLTING	3/4" x 3" LG STUDS c/w (2) NUTS EA	A-193-B/M

REVISIONS

REV	DATE	BY	APP'D	DESCRIPTION
0	03/02/03	KCS		C3 WAS 1/2". ISSUED FOR CONSTRUCTION
1	03/01/15	DB		ISSUED FOR CONSTRUCTION
A	03/01/03	DB		ISSUED FOR APPROVAL

DESIGNER: APACHE CANADA LTD.
CHECKED: DPH ENGINEERING INC.
TITLE: 100 BBL SINGLE WALL A/G FLARE KNOCK-OUT DRUM c/w HEATER
LOCATION: 6'-0" DIA. x 18'-0" SEAM TO SEAM
QUANTIFY FILE NO.: T0310-02000
DATE: 97/01/29
SCALE: 3/4"=1'-0"
W.A. NO.: 006572 & 006573
DRWG. NO.: T2091-900
REV: 1