

CONSTRUCTION NOTES

- TANK CONFORMS TO THE LATEST EDITION, LATEST REVISION OF THE ASME CODE FOR PRESSURE VESSELS, SECTION VIII, DIVISION 1 AND NFPA 58.
- POSTWELD HEAT TREAT: NOT REQUIRED (HEAD STAINLESS ARE HOT FORMED, NORMALIZED)
- RADIOPACH: X-RAY REQUIRED PER ASME CODE (SEE LEGEND)
- JOINT EFFICIENCY: HEADS --- 85% SHELL --- 100%
- CORROSION ALLOWANCE: HEADS --- 0, SHELL --- 0, NOZZLES --- 0.
- MAXIMUM ALLOWABLE WORKING PRESSURE: 250 PSIG AT 125°F; EXTERNAL: D
- MAXIMUM PRESSURE NEW: 250 PSIG AT 125°F LIMITED BY THE HEADS AND SHELL. MORT: 2°F AT 250 PSIG.
- HYDROSTATIC TEST PRESSURE: 325 PSI
- MAXIMUM ALLOWABLE STRESS AT 125°F:

SA455 HEADS	20,800
SA612 HEADS	23,700
SA612 SHELL	23,100
- WELDING AND WELDING MATERIALS SHALL BE ACCORDING TO APPROVED TRINITY INDUSTRIES PROCEDURES. (FOR SK455 HEADS USE WW-105 & WW-108) (FOR SK612 HEADS USE WW-107 & WW-107)
- DIMENSIONS GIVEN ON A CURVED SURFACE ARE ALONG OUTSIDE CURVATURE.
- LONGITUDINAL SEAMS ARE TO BE ALTERNATED.
- FLANGE BOLT HOLES TO STRADDLE NORMAL VESSEL CENTERLINES UNLESS OTHERWISE NOTED.
- UNLESS OTHERWISE SPECIFIED, PRIOR TO HYDROSTATIC TESTING, ALL INSPECTION AND CLEANING INSIDE SHALL ENSURE THAT THE VESSEL IS FREE OF DIRT, GREASE, DEBRIS, LOOSE MILL SCALE, WELD SPATTER, ETC. TO PROMOTE A LEAK-TIGHT SEAL.
- DO NOT REMOVE MANWAY COVER AFTER HYDROSTATIC TESTING.
- BOLT TORQUE PROCEDURE PER TRINITY INDUSTRIES STANDARD DRAWING S-83618.
- INSTALL WOOD, STEEL, OR PLASTIC PROTECTORS ON OPENINGS BEFORE SHIPMENT.
- PROTECT MACHINED SURFACES WITH A FLUET PREVENTIVE BEFORE SHIPMENT.
- DIMENSIONAL TOLERANCES PER TRINITY INDUSTRIES STANDARD DWG. S-51112.
- VESSEL FINISH: BLAST OUTSIDE PER SSPC-SP7 AND APPLY EPOXY PRIMER PER TRINITY INDUSTRIES PROCEDURE CA-4002.
- ESTIMATED WEIGHT VESSEL ONLY: 43,501 LBS. (WITH SK455 HEADS) 43,035 LBS. (WITH SK612 HEADS)

MATERIAL SPECIFICATIONS

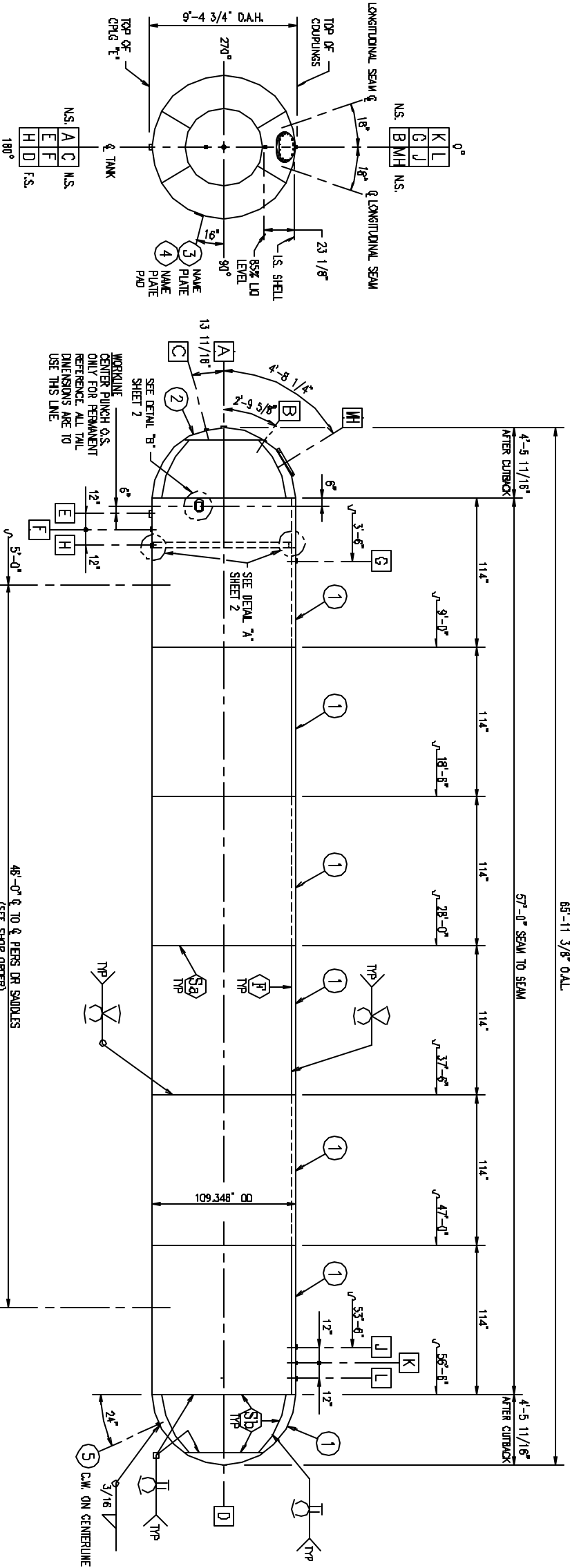
- HEADS:-----SK455 OR SK612
 SHELL:-----SK612
 MANWAY: A. FLANGE-----SK616-70N OR SK103
 B. COVER-----SK616-70 OR EQUAL
 COUPLINGS:-----SK106 OR EQUAL
 PRESSURE BOLTING:

A. STUDS	SA193-87
B. NUTS	SA194-2H

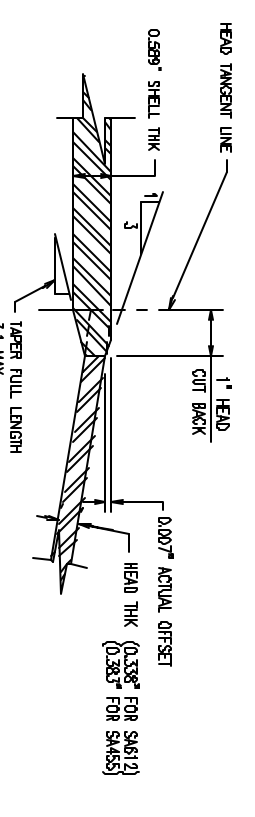
 TEST GASKETS:-----COMPRESSED FIBER (NON-ASBESTOS)
 INTERNAL PIPE:-----P-1, A53F OR EQUAL
 LUGS OR CLIPS:-----P-1, A53F OR EQUAL

GENERAL NOTES

- OPENING 'B': METAL S-30811 COUPLING WITH NET OUTSIDE HEAD. STEEL DIE STAMP 85% ALONGSIDE OPENING 'B' AS SHOWN.
- OPENING 'C': FINISH WITH A THERMOWELL FOR 1/2" NPT THERMOWELL.
- OPENING 'H': FINISH WITH PPE AS SHOWN IN SIDE ELEVATION.
- OUTSIDE SURFACE AREA IS 1,989 SQ. FT., MINIMUM RELIEF REQUIRED FOR LPE IS 26,098 SQ. FT.
- OPENINGS FOR INLET AND OUTLET ARE TO BE LABELED ON THE OPENING, OR ON THE SHELL ADJACENT, TO THE DESIGNATE WHETHER THEY COMMUNICATE WITH THE VAPOR OR LIQUID THERMOWELL OR RELIEF OPENINGS.
- FOR TANK BUILT IN MEXICO USE ALTERNATE WAREHOUSE W-50083.



DETAIL OF HEAD TO SHELL JOINT
 SEE FIGURE UW-13.1(N)



MARK	QTY	SIZE	DESCRIPTION	ITEM	PROJ	WELD	ATTACH. FIB. GEN. NOTES
S-51141	1	2"	3000# HALF COUPLING	10		3/8	
S-51140	1	2"	3000# HALF COUPLING	10		3/8	
S-51112	1	2"	3000# HALF COUPLING	10		3/8	
S-51022	1	2"	3000# HALF COUPLING	10		3/8	
S-50811	1	2"	3000# HALF COUPLING	10		3/8	
S-50198	1	2"	3000# HALF COUPLING	10		3/8	
S-50178	1	3"	6000# SPCL COUPLING	8		3/8	
S-40102	1	2"	3000# HALF COUPLING	10		3/8	
S-40100	1	3/4"	6000# FULL COUPLING	2		3/8	
PA-1	1	2 1/2"	3000# HALF COUPLING	2		3/8	
HD-81	1	1 1/2"	3000# HALF COUPLING	2		3/8	
HD-50	1	1 1/2"	3000# HALF COUPLING	2		3/8	
HD-14	1	1 1/2"	3000# HALF COUPLING	2		3/8	

MARK	QTY	SIZE	DESCRIPTION	ITEM	PROJ	WELD	ATTACH. FIB. GEN. NOTES
L	1	2"	3000# HALF COUPLING	10		3/8	
K	1	2"	3000# HALF COUPLING	10		3/8	
J	1	2"	3000# HALF COUPLING	10		3/8	
H	1	2"	3000# HALF COUPLING	10		3/8	
G	1	2"	3000# HALF COUPLING	10		3/8	
F	1	2"	3000# HALF COUPLING	10		3/8	
E	1	3"	6000# SPCL COUPLING	8		3/8	
D	1	2"	3000# HALF COUPLING	10		3/8	
C	1	3/4"	6000# FULL COUPLING	2		3/8	
B	1	3/4"	6000# SPCL COUPLING	2		3/8	
A	1	2 1/2"	3000# HALF COUPLING	2		3/8	
NH	1	1 1/2"	3000# HALF COUPLING	2		3/8	

X-RAY LEGEND

(F)	FULL
(SD)	SPOT REQUIRED PER UW-111(D)(5)(b)
(SB)	SPOT PER UW-111(C)

REV	BY	DATE	REVISION

TRINITY INDUSTRIES, INC.
 L.P.G. DIVISION

TANK, HORIZONTAL STORAGE
 109,346" OD
 30,000 NOM WG, 250 PSI
 FOR NON-CORROSIVE SERVICE

DRAWING NO. **ST-30**

SHEET	REV	SIZE
4		D

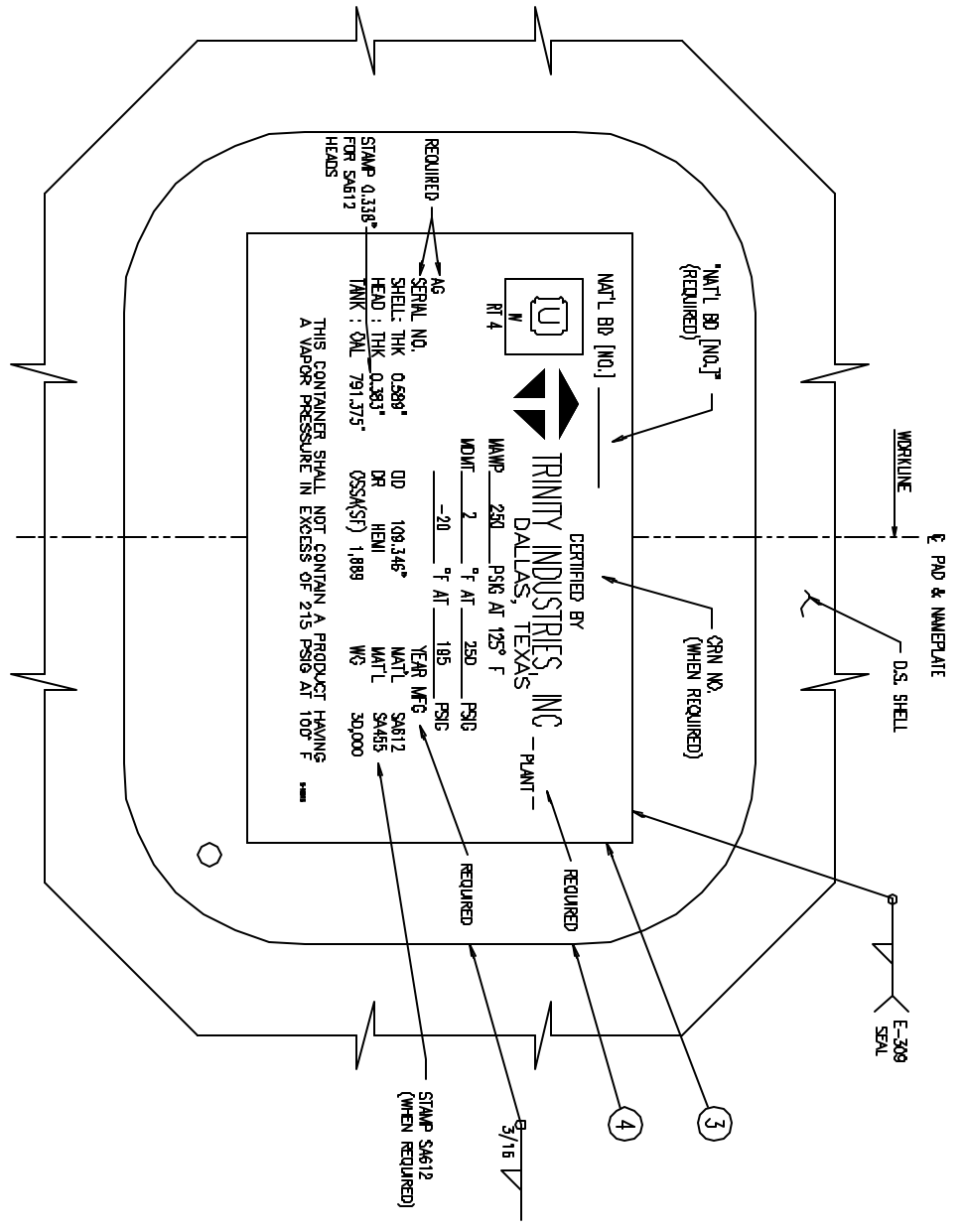
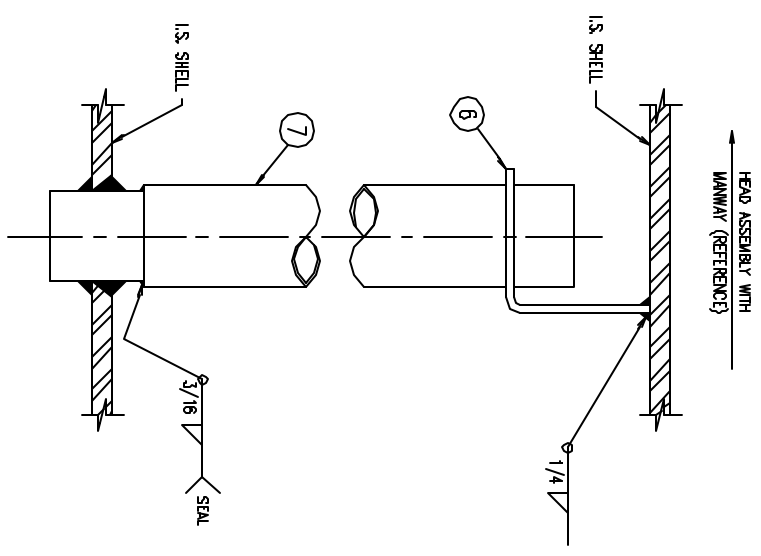
REV	BY	DATE	REVISION

LINE	ITEM 1/PART NO	DESCRIPTION	ITEM 2/PART NO	DESCRIPTION	ITEM 13/PART NO	DESCRIPTION
00	PF-10-01	PREFAB BARREL, S&B12 HEAD	HN-81	HEAD, HENL, 0.338" MIN THK S&B12	NONE	NONE
01	PF-10-01	PREFAB BARREL, S&B12 HEAD	HD-81	HEAD, HENL, 0.338" MIN THK S&B12	S-52082	SADDLES, WELDED IN PLACE
02	PF-10-02	PREFAB BARREL, S&B55 HEAD	HN-80	HEAD, HENL, 0.363" MIN THK S&B55	NONE	NONE
03	PF-10-02	PREFAB BARREL, S&B55 HEAD	HN-80	HEAD, HENL, 0.363" MIN THK S&B55	S-52082	SADDLES, WELDED IN PLACE

ITEM	PART NO.	QTY	DESCRIPTION
1	SEE LINE CHART	1	PREFAB BARREL (6) RINGS + (1) HEAD
1	HD-14	1	HEAD, HEMISPHERICAL, SEGMENTED, 109,346" OD
6	SR-8-01	6	SHELL RING, 0.589" THK, X 11.4" LG
2	SEE LINE CHART	1	HEAD, HEMISPHERICAL, SEGMENTED, 109,346" OD
3	S-50093	1	NAME PLATE S.S.
4	PA-1-02	1	PAQ. NAME PLATE
5	S-40100	1	GROUNDING LUG
6	S-40102	1	CUP, 3" PPE
7	S-83900-05	1	PPE, 3" SCH 40 X 105 1/2" LG
8	S-82614-01	1	MANWAY COVER ASSEMBLY
9	S-50179	1	COUPLING, SRCL 3"-6000#
10	082-75B14	6	COUPLING, HALF 2"-3000#
11	S-50199-01	1	THERMOWELL (SEE GENERAL NOTE 2)
12	082-76745	1	PLUG 2" MANPT HEX HEAD
13	SEE LINE CHART	2	SADDLES
14	-----	13	PRIMER, GAS (SEE CONSTRUCTION NOTE 19)
15	185-00128	1	LOT THREAD PROTECTORS (SEE CONSTRUCTION NOTE 16)

LINE CHART

PARTS LIST



DETAIL "A"
CUP ORIENTATION

DETAIL "B"

CUSTOMER		TRINITY INDUSTRIES, INC.	
		L.P.G. DIVISION	
%			
DRAWING NO.		ST-30	
SHEET		REV. SIZE	
4		D	
DRAWING NO.		ST-30	
TANK, HORIZONTAL STORAGE			
109,346" OD			
30,000 NOM WG, 250 PSI			
FOR NON-CORROSIVE SERVICE			
DRAWING NO.		ST-30	
SHEET		REV. SIZE	
4		D	

THIS DRAWING CONTAINS SPECIFIC AND PROPRIETARY INFORMATION. IT IS TO BE KEPT IN CONFIDENTIALITY AND NOT TO BE REPRODUCED OR TRANSMITTED IN ANY FORM OR BY ANY MEANS, ELECTRONIC OR MECHANICAL, INCLUDING PHOTOCOPYING, RECORDING, OR BY ANY INFORMATION STORAGE AND RETRIEVAL SYSTEM, WITHOUT THE WRITTEN PERMISSION OF TRINITY INDUSTRIES, INC.

A B C D E F G H I J K