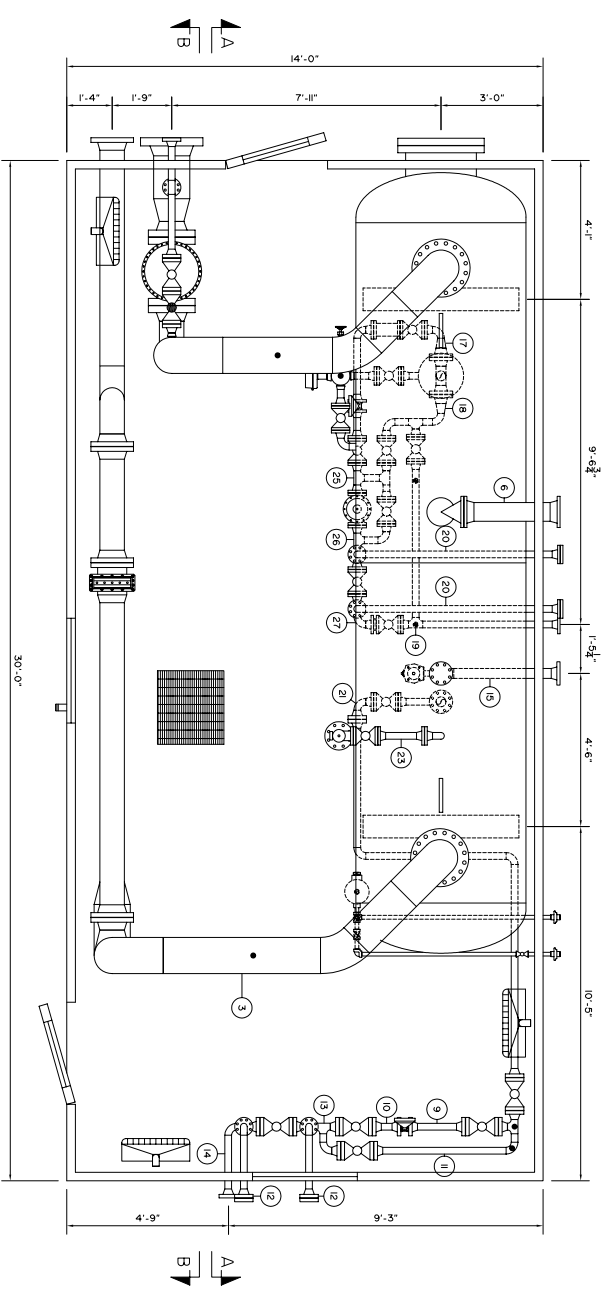
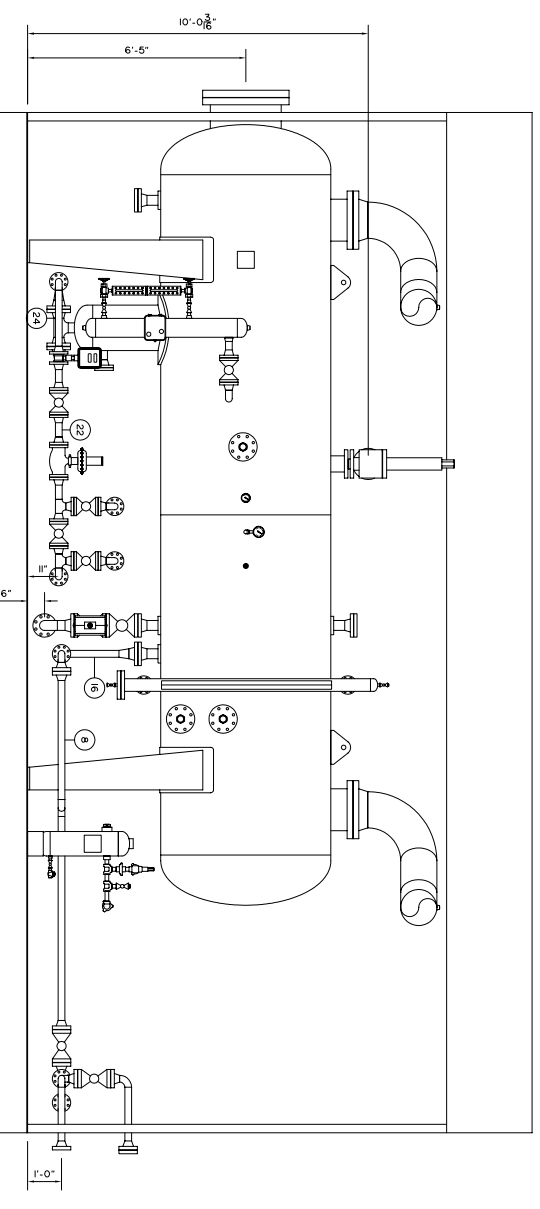
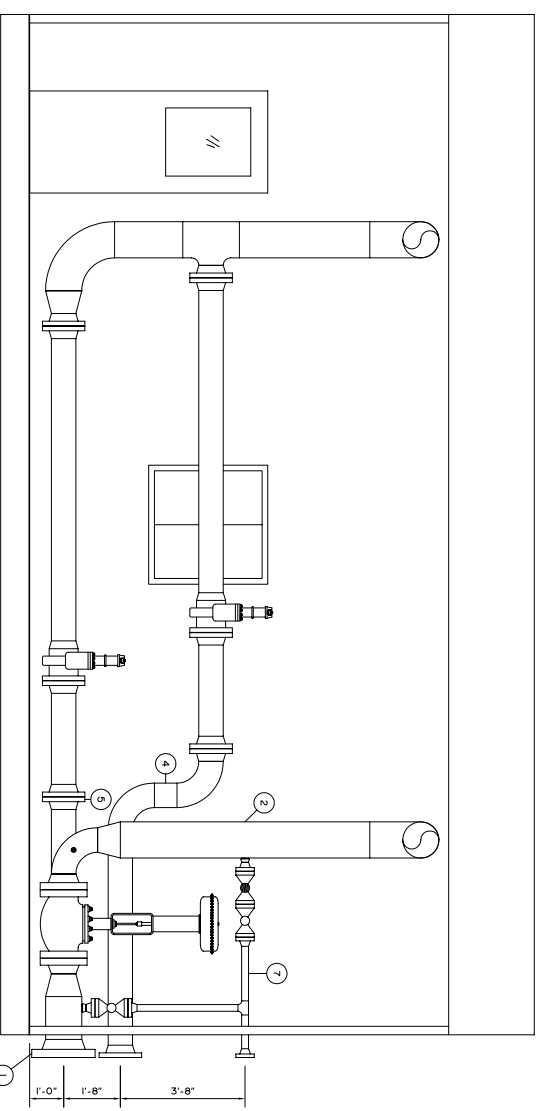


BILL OF MATERIAL

ITEM NO.	DESCRIPTION
1	SPOOL NO 1 - SEE DRAWING 33465-SP00L-1
2	SPOOL NO 2 - SEE DRAWING 33465-SP00L-1
3	SPOOL NO 3 - SEE DRAWING 33465-SP00L-1
4	SPOOL NO 4 - SEE DRAWING 33465-SP00L-1
5	SPOOL NO 5 - SEE DRAWING 33465-SP00L-1
6	SPOOL NO 6 - SEE DRAWING 33465-SP00L-1
7	SPOOL NO 7 - SEE DRAWING 33465-SP00L-2
8	SPOOL NO 8 - SEE DRAWING 33465-SP00L-2
9	SPOOL NO 9 - SEE DRAWING 33465-SP00L-2
10	SPOOL NO 10 - SEE DRAWING 33465-SP00L-2
11	SPOOL NO 11 - SEE DRAWING 33465-SP00L-2
12	SPOOL NO 12 - SEE DRAWING 33465-SP00L-2
13	SPOOL NO 13 - SEE DRAWING 33465-SP00L-2
14	SPOOL NO 14 - SEE DRAWING 33465-SP00L-2
15	SPOOL NO 15 - SEE DRAWING 33465-SP00L-3
16	SPOOL NO 16 - SEE DRAWING 33465-SP00L-3
17	SPOOL NO 17 - SEE DRAWING 33465-SP00L-3
18	SPOOL NO 18 - SEE DRAWING 33465-SP00L-3
19	SPOOL NO 19 - SEE DRAWING 33465-SP00L-3
20	SPOOL NO 20 - SEE DRAWING 33465-SP00L-3
21	SPOOL NO 21 - SEE DRAWING 33465-SP00L-3
22	SPOOL NO 22 - SEE DRAWING 33465-SP00L-3
23	SPOOL NO 23 - SEE DRAWING 33465-SP00L-3
24	SPOOL NO 24 - SEE DRAWING 33465-SP00L-3
25	SPOOL NO 25 - SEE DRAWING 33465-SP00L-3
26	SPOOL NO 26 - SEE DRAWING 33465-SP00L-3
27	SPOOL NO 27 - SEE DRAWING 33465-SP00L-3
28	SPOOL NO 28 - SEE DRAWING 33465-SP00L-3
29	REF. 2" 300 ANSI SAISON
30	REF. 2" 600 ANSI SAISON
31	REF. 4" 300 ANSI TAPERED 2" SAISON
32	304 SPRAWLING GSKT. 2" 300 ANSI, N158
33	304 SPRAWLING GSKT. 2" 600 ANSI, N158
34	304 SPRAWLING GSKT. 4" 300 ANSI, N158
35	304 SPRAWLING GSKT. 4" 600 ANSI, N158
36	304 SPRAWLING GSKT. 6" 300 ANSI, N158
37	304 SPRAWLING GSKT. 6" 600 ANSI, N158
38	304 SPRAWLING GSKT. 8" 300 ANSI, N158
39	304 SPRAWLING GSKT. 8" 600 ANSI, N158
40	32
41	87 STD. 1/2" X 7/2" SA035-B7
42	87 STD. 1/2" X 3/4" SA035-B7
43	87 STD. 3/4" X 1/2" SA035-B7
44	87 STD. 3/4" X 1/4" SA035-B7
45	87 STD. 5/8" X 4" SA035-B7
46	176
47	8
48	87M STD. 5/8" X 4 1/4" SA035-B7M
49	12
50	2H HEX NUT, 1/2" SA044-2H
51	2H HEX NUT, 3/4" SA044-2H
52	2H HEX NUT, 5/8" SA044-2H
53	2H HEX NUT, 5/8" SA044-2H
54	
55	

NOTES:
 ALL STD LENGTHS GIVEN ARE THERZAD
 SHIPPING DIMENSIONS 8'-6" WIDE X 32'-0" LONG X 8'-9" HIGH
 PACKAGE WEIGHT APPROX 50,000 LBS
 ALL THERZAD PARTS TO BE 504, 80
 ALL THERZAD FITTINGS TO BE 5000 PSI



CLIENT
 OPEN RANGE
 ENERGY CORP.
 926-23rd Street S.W. Medicine Hat
 Alberta, Canada, T1A 8H1 (403) 526-5142

PROJECT
 INLET SEPARATOR PACKAGE
 LSD: 09-34-53-20 WSM

TITLE
 LAYOUT

W/O. No.: 33465
 DRAWN BY: G. VANDERMOLEN
 DATE: 11/18/09

REV. No.: 0
 SCALE: 3/8"=1'-0"

DATE: 11/18/09
 CAD No.: 33465-LAYOUT

BROMLEY
 MECHANICAL SERVICES

REV.	NO.	DATE	DESCRIPTION	BY	CHK'D	SIGN'D
0	1	11 18 09	ISSUED FOR APPROVAL	GV	GV	