



Firetube Boiler Inspection Report

Date 17-Oct-2018

Page 1 of 6

Insp Date: 17-Oct-2018	Client: Tervita	District:	LSD: 10-09-067-05 W6M
Facility: Gold Creek	Facility Type: TRD	Client Ref # 20057	IRM Ref #
Equipment #	Description: Steam Boiler	Type: Fire Tube	
Jur#: 647152	CRN U7388.21	MFR: Cleaverbrooks	Mfr S/N: T4583-1-1 Yr Blt: 2014
Capacity: 5175 #/hr	Code: Sect IV	Status: Operating	
MAWP: 103 kPa	MAWT: 121 C	Lowest Set PSV: 15 psi	Total PSV Capacity: 6949 #/hr

SUMMARY

External

Base – is in good condition
 Cladding – is in good condition
 Stack – is in good condition
 Ground – present on building
 Attached Piping – properly made up and supported; no leaks or short bolts found; insulation and cladding on hot line in good condition

Log Book – log book entries light – **ENSURE ALL PERTINENT ENTRIES ARE BEING MADE IN LOG BOOK, ENSURE NAMES ARE RECORDED LEGIBLY FOR EVERY DAY**

Internal - Fireside

Tubes Sheets – circumferential weld and ligaments visually inspected with no issues noted, tube to tube sheet seals visually inspected with no issues noted
 Tubes – rolled and flared ends visually inspected with no issues noted; noted one tube that has a slight bow (top tube on open side of front door on third pass – will monitor for further movement next inspection) otherwise tubes are round and straight with no signs of overheating
 Furnace Tube – back tube sheet weld visually inspected with no issues noted
 Front door is in good condition

Front tube sheet baffle openings (corners and space where baffle meets the tubesheet) packed with castable refractory to reseal pass

Back door refractory cracks repaired – cracking from vibration from propane firing – PRIME addressed but may require a return visit to fully address

Internal – Heat Medium Side

Tubes – light colored scale present on the tubes – about 1/16” typical with up to 1/8” on furnace tube on the bottom
 Drum – light colored scale is present on the drum that is thicker than on the tubes with loose scale/sludge in the front and back of the drum – tubes and shell pressure washed and all loose scale/sludge removed
 PLWFCO – bowl had moderate to high amount of sludge in bowl – cleaned; head is clean; steam and water connections are clean
 SLWFCO – probes gummed with sludge – cleaned, bowl had sludge that was cleaned

ENSURE PROPER BLOWDOWN OF COLUMNS TO PREVENT SLUDGE BUILD UP

Burner Management

Burner System – all burner components are in good condition, fan and inlet grate is clean
 Gas Valves – gas valves bubble tested and was found to be gas tight
 Combustion was found to be surging – combustion was checked and adjusted to prevent vibration

Instrumentation / Controls

Instrumentation – all instrumentation is in good condition; all operating and safety switches were function tested and all operated satisfactory

PSV(s)

PSV last serviced in 2014 – new PSV to be installed. PSV will be put on a one year service interval to establish an operating history.

Inspector: Murray Dyjur

Qual: IBPVI 272

Signature: 

Report date: 17-Oct-2018

Rpt status:

FINAL

ASSESSMENT

PSV identified against records: Yes Present service date acceptable: Yes PSV set at or below MAWP: Yes

Total PSV Capacity verified as at/above required: Yes Boiler is fit for continued service: Yes

NEXT INSPECTION PLAN



Firetube Boiler Inspection Report

Date 17-Oct-2018

Page 2 of 6

Boiler will remain on a one year inspection interval with a visual external, visual internal to be completed at that time. A hydro-test will be carried out at that time as well.

NEXT INSPECTIONS

Thorough Type	External	Internal	UT/NDE	Other	PSV Calibration
VE, VI, HT	17-Oct-2019	17-Oct-2019		17-Oct-2019	

Qualified Inspector:

Qual:

Signature:



Report date:

Report status:

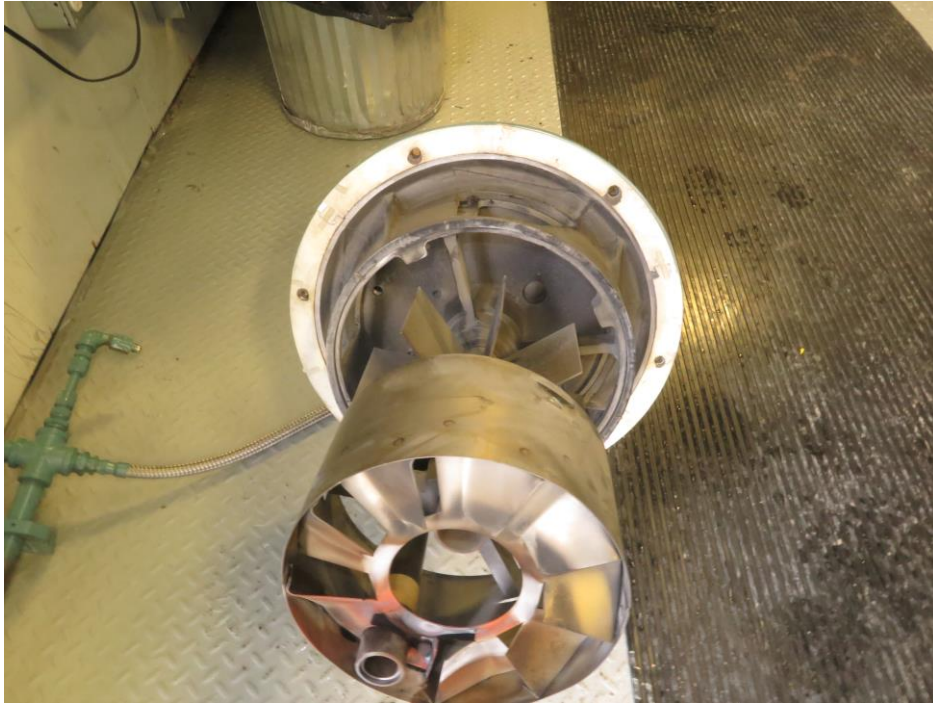
ADDITIONAL NOTES & PHOTOS



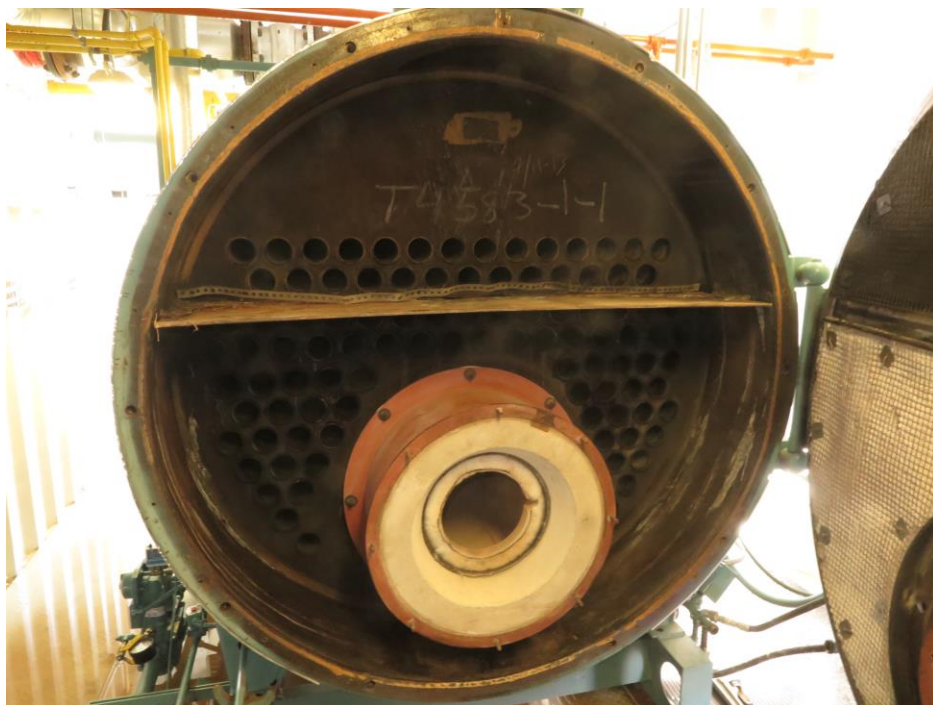
Cladding, base, and piping



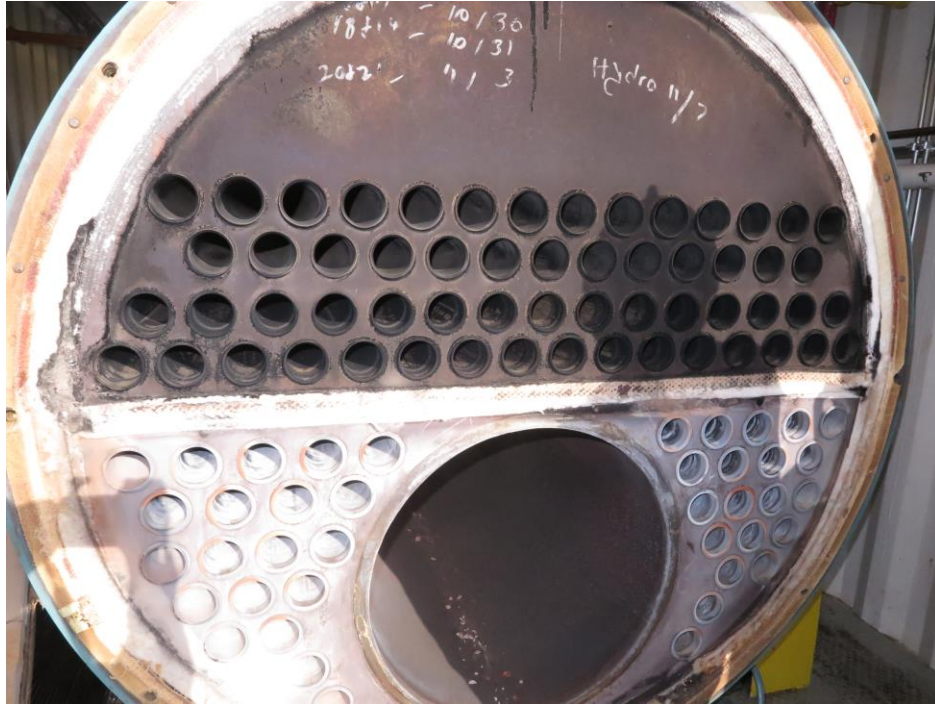
Name plate



Burner



Front tube sheet



Rear tube sheet



Top of tubes



Bottom of furnace tube and shell (after cleaning)



PLWFCO Bowl