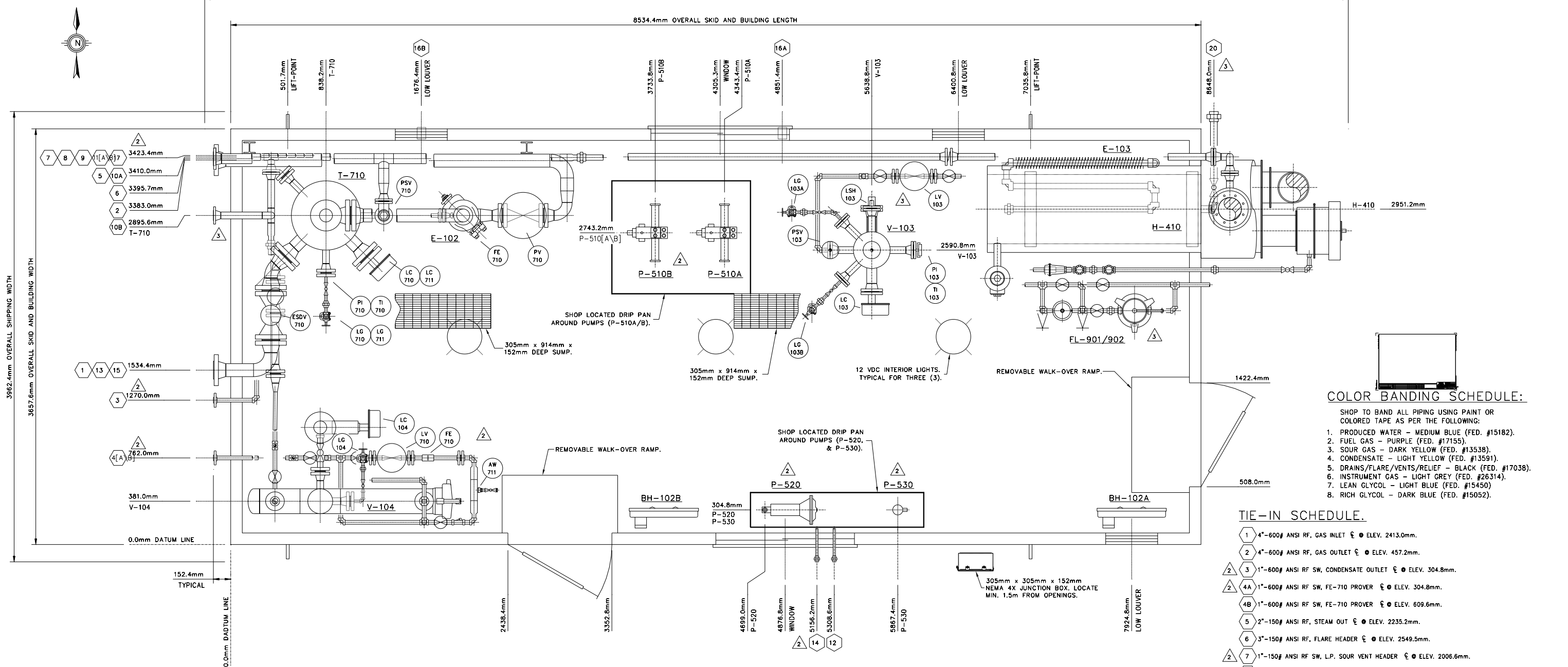


10058.4mm OVERALL SHIPPING LENGTH

8534.4mm OVERALL SKID AND BUILDING LENGTH



COLOR BANDING SCHEDULE:

- SHOP TO BAND ALL PIPING USING PAINT OR COLORED TAPE AS PER THE FOLLOWING:
1. PRODUCED WATER - MEDIUM BLUE (FED. #15182).
 2. FUEL GAS - PURPLE (FED. #17155).
 3. SOUR GAS - DARK YELLOW (FED. #13538).
 4. CONDENSATE - LIGHT YELLOW (FED. #13591).
 5. DRAINS/FLARE/VENTS/RELIEF - BLACK (FED. #17038).
 6. INSTRUMENT GAS - LIGHT GREY (FED. #26314).
 7. LEAN GLYCOL - LIGHT BLUE (FED. #15450).
 8. RICH GLYCOL - DARK BLUE (FED. #15052).

TIE-IN SCHEDULE.

- 1 4"-600# ANSI RF, GAS INLET @ ELEV. 2413.0mm.
- 2 4"-600# ANSI RF, GAS OUTLET @ ELEV. 457.2mm.
- 3 1"-600# ANSI RF SW, CONDENSATE OUTLET @ ELEV. 304.8mm.
- 4A 1"-600# ANSI RF SW, FE-710 PROVER @ ELEV. 304.8mm.
- 4B 1"-600# ANSI RF SW, FE-710 PROVER @ ELEV. 609.6mm.
- 5 2"-150# ANSI RF, STEAM OUT @ ELEV. 2235.2mm.
- 6 3"-150# ANSI RF, FLARE HEADER @ ELEV. 2549.5mm.
- 7 1"-150# ANSI RF SW, L.P. SOUR VENT HEADER @ ELEV. 2006.6mm.
- 8 1"-3000# NPT, L.P. SWEET VENT HEADER @ ELEV. 1828.8mm.
- 9 1"-3000# NPT, SWEET F.G. SUPPLY @ ELEV. 1600.2mm.
- 10A 2"-150# ANSI RF, DRAIN HEADER @ ELEV. 152.4mm.
- 10B 2"-150# ANSI RF, DRAIN HEADER @ ELEV. 2235.2mm.
- 11A 1"-600# ANSI RF SW, TO HEAT TRACE STATION @ ELEV. 819.2mm.
- 11B 1"-600# ANSI RF SW, FROM HEAT TRACE STATION @ ELEV. 304.8mm.
- 12 [1\2]"-3000# NPT, METHANOL SUPPLY @ ELEV. 152.4mm.
- 13 [1\2]" 16 ga. TUBING, METHANOL TO WELLHEAD STRAPPED TO GAS INLET PIPING (TIE-IN #1).
- 14 [1\2]"-3000# NPT, INHIBITOR SUPPLY @ ELEV. 152.4mm.
- 15 [1\2]" 16 ga. TUBING, INHIBITOR TO WELLHEAD STRAPPED TO GAS INLET PIPING (TIE-IN #1).
- 16A 3"-3000# NPT, SKID DRAINS @ ELEV. 152.4mm BELOW T.O.S.
- 17 1"-3000# NPT, FLASH GAS OUTLET @ ELEV. 1371.6mm.
- 18 2"-3000# NPT, GLYCOL FILL CONNECTION @ ELEV. 1117.6mm.

GENERAL NOTES:

1. THIS DRAWING IS TO BE READ IN CONJUNCTION WITH THE MECHANICAL FLOWSHEET.
2. PROCESS PIPING TO BE DESIGNED TO ASME B31.3 1999 EDITION AND 2001 ADDENDA.
3. PRESSURE VESSELS ARE TO BE REGISTERED IN ALBERTA.
4. VESSELS AND PIPING TO BE INSULATED AS PER FLOWSHEET AND/OR FABRICATION DRAWINGS.
5. PAINTING: SURFACE PREPARATION: WHITE METAL BLAST TO SSPC-SP5.
PRIMER: 1[S\VC] CLOVERDALE #T-101 ZINC-PHOSPHATE GREY OVERALL.
FINISH PAINT: 1[S\VC] CLOVERDALE 111 SERIES TAUPA (FED. #16555) MARINE ENAMEL.
*** SEE COLOR BANDING SCHEDULE ***
6. ALL ELEVATIONS SHOWN ARE FROM TOP OF MAIN SKID MEMBERS. DEPTH OF SKID IS 254mm.
7. ALL SKID EDGE CONNECTIONS TO BE HELD AT DIMENSIONS AND ELEVATIONS SHOWN FOR CUSTOMER TIE-INS.
8. SKID IS DESIGNED FOR A FOUR (4) POINT LIFT.
9. BLEED TYPE INSTRUMENTS, METER RUN MANIFOLD, REGULATOR BONNETS, INSTRUMENT CASES AND CONTROL VALVE ACTUATORS ARE VENTED TO L.P. VENT HEADERS.
10. [1\2]" INSTRUMENT GAS HEADER AS SHOWN. SHOP TO RUN AS REQUIRED WITH [1\4]" TAKE-OFFS [C\W] ISOLATION NEEDLE VALVE, 67 CFR REGULATOR, AND TUBING TO COMPLETE.
11. REMOVE ALL FLOATS/DISPLACERS FROM ALL LEVEL CONTROLLERS AND SWITCHES. TAG AND CRATE FOR SHIPPING.
12. ALL THERMOWELLS TO BE TAGGED WITH "TW" TAG NUMBERS.
13. PROTECT ALL OPENINGS FOR SHIPPING.
14. ESTIMATED SHIPPING WEIGHT (LESS TOP SECTION OF T-710): 15,200 Kg.
TOP SECTION OF T-710: 3,136 Kg.
15. FIVE (5) OPERATING MANUALS & ONE (1) QUALITY CONTROL DATA BOOK PER UNIT ARE PROVIDED.

	FSC SPEC - 1500# (SOUR LOW TEMP)	FB SPEC - 1500# (SWEET)	DS SPEC - 600# (SOUR)	AS SPEC - 150# (SOUR)	AB SPEC - 150# (SWEET)
DESIGN CONDITIONS:					
D.P. & TEMP.	25,545 kPa-g @ [-45\38]°C	25,545 kPa-g @ [-29\38]°C	9929 kPa-g @ [-29\54]°C	1896 kPa-g @ [-29\54]°C	1896 kPa-g @ [-29\54]°C
B.W. C.A.	-	-	3.2mm	3.2mm	1.6mm
NPT/SW C.A.	3.2mm	1.6mm	3.2mm	3.2mm	1.6mm
RADIOGRAPHY	NONE	10% TO ASME B31.3	100% TO ASME B31.3	100% TO ASME B31.3	10% TO ASME B31.3
P.W.H.T.	NONE	NONE	BW PIPING @ 620°C ± 15°C FOR 60 MIN.	BW PIPING @ 620°C ± 15°C FOR 60 MIN.	NONE
* HYDROTEST	1.5 TIMES D.P.	1.5 TIMES D.P.	1.5 TIMES D.P.	1.5 TIMES D.P.	1.5 TIMES D.P.
PIPING:					
** BW PIPING	-	-	2" SCH. 160, SA-106-B	2" - 3" SCH. 80, SA-106-B	-
SW PIPING	-	≤ 1[1\2]" SCH. 160 SA-106-B	3" - 4" SCH. XH, SA-106-B	[1\2]" SCH. 160 SA-106-B	≤ 1[1\2]" SCH. XH SA-106-B
NPT PIPING	-	≤ 1[1\2]" SCH. XXH SA-106-B	≤ 1[1\2]" SCH. XXH SA-106-B	[3\4]"-1[1\2]" SCH. XH, SA-106-B	≤ 1[1\2]" SCH. XH SA-106-B
INSTRUMENT TUBING	[1\4]" O.D. 304SS (0.065")	[1\4]" O.D. 304SS (0.065")	[1\4]" O.D. 304SS (0.035")	[1\4]" O.D. 304SS (0.035")	[1\4]" O.D. 304SS (0.035")
PROCESS TUBING	[3\8]" O.D. 316SS (0.065")	[3\8]" O.D. 316SS (0.065")	[3\8]" O.D. 316SS (0.035")	[3\8]" O.D. 316SS (0.035")	[3\8]" O.D. 316SS (0.035")
FITTINGS:					
BW FITTINGS	-	-	2" SCH. 160, SA-234-WPB	2" - 3" SCH. 80, SA-234-WPB	-
SW FITTINGS	-	≤ 1[1\2]" 6000# SA-105	3" - 4" SCH. XH, SA-234-WPB	[1\2]" 6000# SA-105	≤ 1[1\2]" 3000# SA-105
NPT FITTINGS	-	≤ 1[1\2]" 6000# SA-105	NO UNIONS - FLANGED BREAKS	[3\4]"-1[1\2]" 3000# SA-105	NO UNIONS - FLANGED BREAKS
FLANGES	-	≤ 1[1\2]" 6000# SA-105	NO UNIONS - FLANGED BREAKS	[1\2]" 6000# SA-105	≤ 1[1\2]" 3000# SA-105
GASKETS	-	-	RFWN BORE TO PIPE, SA-105	[3\4]"-1[1\2]" 3000# SA-105	-
BOLTING	-	-	RFSW BORE TO PIPE, SA-105	RFSW BORE TO PIPE, SA-105	-
PUMP/L.C. NIPPLES	-	SCH. XXH SA-106-B	SA-193-B7M/SA-194-2HM	SA-193-B7M/SA-194-2HM	-
INSTR. TUBING FITTINGS	316SS SWAGelok	316SS SWAGelok	SCH. XXH, SA-106-B	SCH. XXH, SA-106-B	SCH. 160, SA-106-B
PROCESS TUBING FITTINGS	316SS SWAGelok	316SS SWAGelok	316SS SWAGelok	316SS SWAGelok	316SS SWAGelok

*LOW PRESSURE NPT/SW PIPING IS AIR TESTED AT 689 kPa-g.
**PIPE SCHEDULE IS SELECTED BASED ON PRESSURE AND CORROSION LIMITS.
***ALLOW 1.6mm GAP IN SOCKET WELDING.

DWG.	DESCRIPTION	REV.	DATE	BY	APP'D	DESCRIPTION
D-2002-6783-50F	MECHANICAL FLOWSHEET	A	2002-02-15	WTF	JM	ISSUED FOR CONSTRUCTION
						ISSUED FOR CUSTOMER APPROVAL

ALCO GAS & OIL PRODUCTION EQUIPMENT LTD.

LAYOUT AND GENERAL NOTES
GLYCOL DEHYDRATION PACKAGE
24" O.D. CONTACTOR [W.] 375,000 [BTU/HR] REBOILER

LOCATIONS: SELKIRK/FERRIER
CUSTOMER: PANCANADIAN RESOURCES [C\O] DPH ENGINEERING INC.

DWG/SHOP ORDER: D-2002-6783-50A-001/001 REV. 3

PANCANADIAN DWG# DEHY1D

D-2002-6783-50A-001.dwg DATE: 06/20/2002 TIME: 10:23 DRAFTSMAN: TUMACK