

PLAN

N:\EFCV\Limited_Ops\Projects\2009\090334\090334.dwg Jun 18, 2009 5:10pm

CUSTOMER CONNECTIONS			SHIPPING WEIGHTS (ALL EQUIP. DRY)		UNIT DIMENSIONS	
NO.	DESCRIPTION	SIZE	AA GENERATORS: STAMFORD HC1534C	2526 KG	MAIN SKID w/ALL EQUIP MOUNTED	
30	FUEL GAS SUPPLY	1-1/2" 150# RF	BB DRIVERS: WAUKESHA H24GL	6804 KG	LENGTH	11905 mm 39' - 1"
58	COOLANT DRAIN	3/4" NPT	CC COOLERS: YOUNG TOUCHSTONE VB24F	3124 KG	WIDTH	5201 mm 17' - 1"
61	ENGINE EXHAUST	8" OD TUBE	DD SILENCERS: SILEX JAT-8	144 KG	HEIGHT	5434 mm 17" - 10"
			FF LOAD BANK	120 KG	SHIPPING DIMENSIONS	
			EQUIPMENT SUB-SKIDS	892 KG	LENGTH	11905 mm 39' - 1"
			MAIN SKID	8135 KG	WIDTH	5201 mm 17' - 1"
			BUILDING	2692 KG	HEIGHT	4496 mm 14" - 9"
			PIPING	795 KG	(COOLER DIMENSIONS INCLUDED)	
			HEATERS	29 KG		
			ASST. ELECTRICAL	350 KG		
			MISC. & LIQUIDS	959 KG		
			TOTAL APPROX. UNIT WEIGHT	26600 KG		
OTHER CUSTOMER LOCAL CONNECTIONS & VENTS						
NO.	DESCRIPTION	SIZE				
P	WASTE OIL TANK VENT	1/2" NPT				
V	WASTE OIL TANK PUMP OUT	2" NPT				
Z	WASTE OIL INLET	1/2" NPT				

NOTE - ITEMS SHIPPED LOOSE INCLUDE (BUT ARE NOT LIMITED TO):
EXHAUST SILENCERS, EXHAUST STACKS, EXHAUST STANDS, AND LOAD BANK.

- GENERAL NOTES**
- ALL ORDINATE DIMENSIONS FROM REFERENCE POINT.
 - THIS DRAWING IS NOT TO BE USED FOR CONSTRUCTION UNLESS STAMPED "RELEASED FOR MANUFACTURE".
 - DO NOT SCALE THIS DRAWING.
 - ALL DIMENSIONS ARE IN MILLIMETERS.
 - FOR DESIGN PARAMETERS AND PAINT SPECIFICATION REFER TO PROJECT SCOPE SUMMARY DRAWING NO. SS-090334.
 - ALL PIPING MUST BE SELF SUPPORTING BEYOND UNIT CONNECTIONS.
 - LOCATIONS OF CUSTOMER CONNECTIONS ARE NOT GUARANTEED AS THESE DIMENSIONS MAY BE SUBJECT TO AN ACCUMULATION OF TOLERANCES ON SEVERAL COMPONENTS. MINOR CHANGES MAY ALSO BE MADE ON SCREWED SERVICE PIPING IN ORDER TO FACILITATE INSTALLATION AND MAINTENANCE. UPON COMPLETION A FINAL DRAWING WILL BE ISSUED WITH FIELD CONNECTIONS CORRECTED TO 5 mm.
 - IT IS ENERFLEX'S RECOMMENDATION THAT ANY PRE-SPOOLING TO THIS GENERATOR PACKAGE CONTAIN FIELD WELDS AT ALL CUSTOMER CONNECTIONS.
 - DIMENSIONS INDICATED (*) SHALL BE CONFIRMED AND CERTIFIED CORRECT (**) ON A FINAL REVISION.

REV	DESCRIPTION	DATE	DRAWN BY	CHECKED BY
2	AS BUILT	09/06/17	SBR/SWT	WJ
1	ISSUED FOR CONSTRUCTION	09/05/07	CAL	-
0	FOR APPROVAL	09/04/25	SWT	-

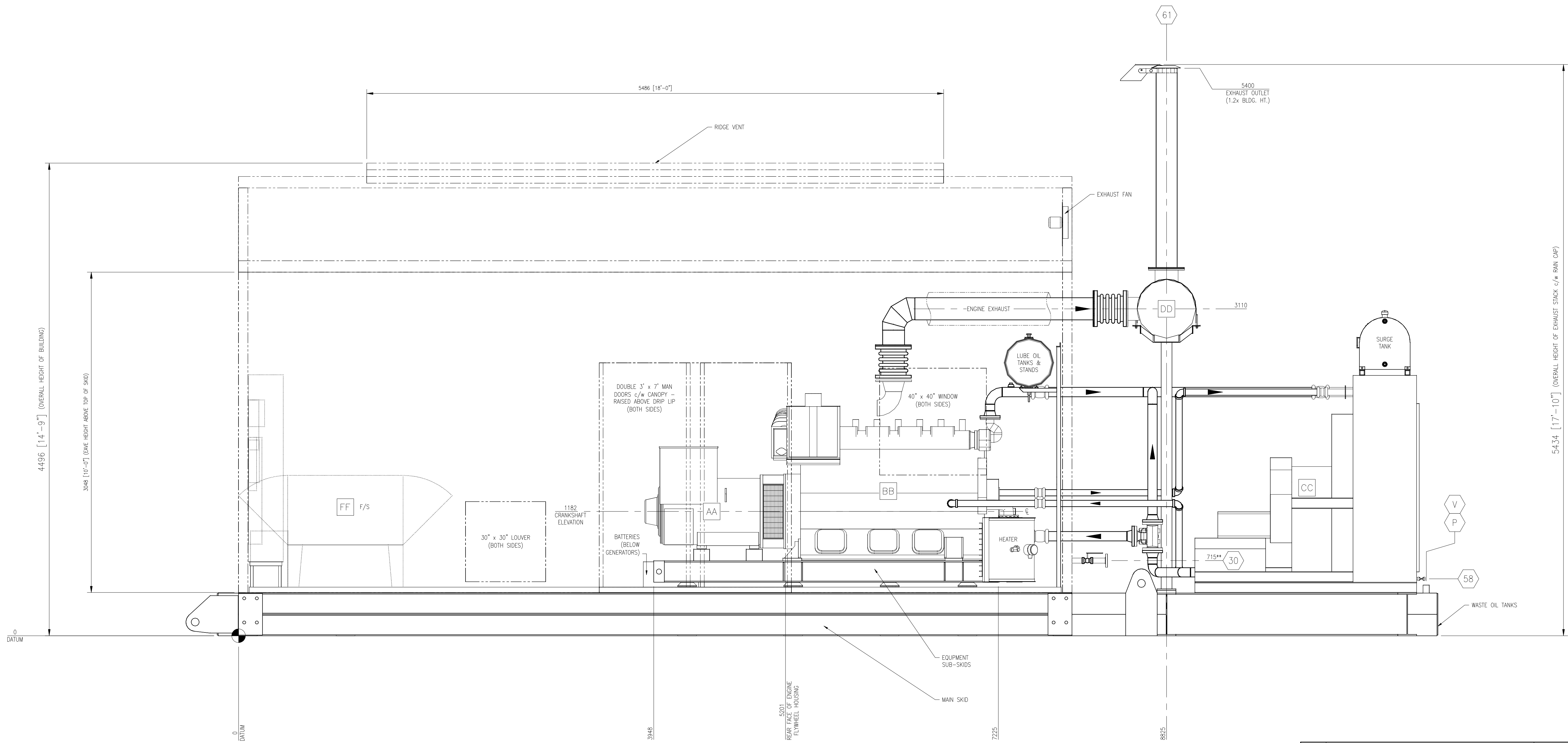
ENERFLEX
4700 47 Street SE Calgary AB Canada T2B 3R1 Canada Tel. +1.403.236.6800 Fax +1.403.279.0367 www.enerflex.com

TITLE: **GENERAL ARRANGEMENT**
P400, WAUKESHA VGF-H24GL (DOUBLE)
DUAL 400 kW NATURAL GAS GENERATOR PACKAGE

FOR: **EOG RESOURCES CANADA LTD.**
(MAXHAMISH)

CONSULTANT: **P.O.: 09-037** LSD: d-36-1/94-0-14
JOB No.: **090334**

DRWN BY: SWT	DESIGN BY: SWT	DATE: 09/04/21	DWG. No.	SHEET 1 (OF 3)
DATE: 09/04/25	CHKD BY: WJ	DATE: 09/06/17	GA-090334	
SCALE: NTS	APPVD BY: WJ	DATE: 09/05/07		



ELEVATION 'A-A'

REV	DESCRIPTION	DATE	DRAWN BY	CHECKED BY
2	AS BUILT	09/06/17	SBR/SWT	WJ
1	ISSUED FOR CONSTRUCTION	09/05/07	CAL	-
0	FOR APPROVAL	09/04/25	SWT	-

ENERFLEX
 4700 47 Street SE Calgary AB Canada T2B 3R1 Canada Tel. +1 403 236 6800 Fax +1 403 279 0367
 www.enerflex.com

TITLE: **ELEVATION VIEW 'A-A'**
P400, WAUKESHA VGF-H24GL (DOUBLE)
 DUAL 400 kW NATURAL GAS GENERATOR PACKAGE

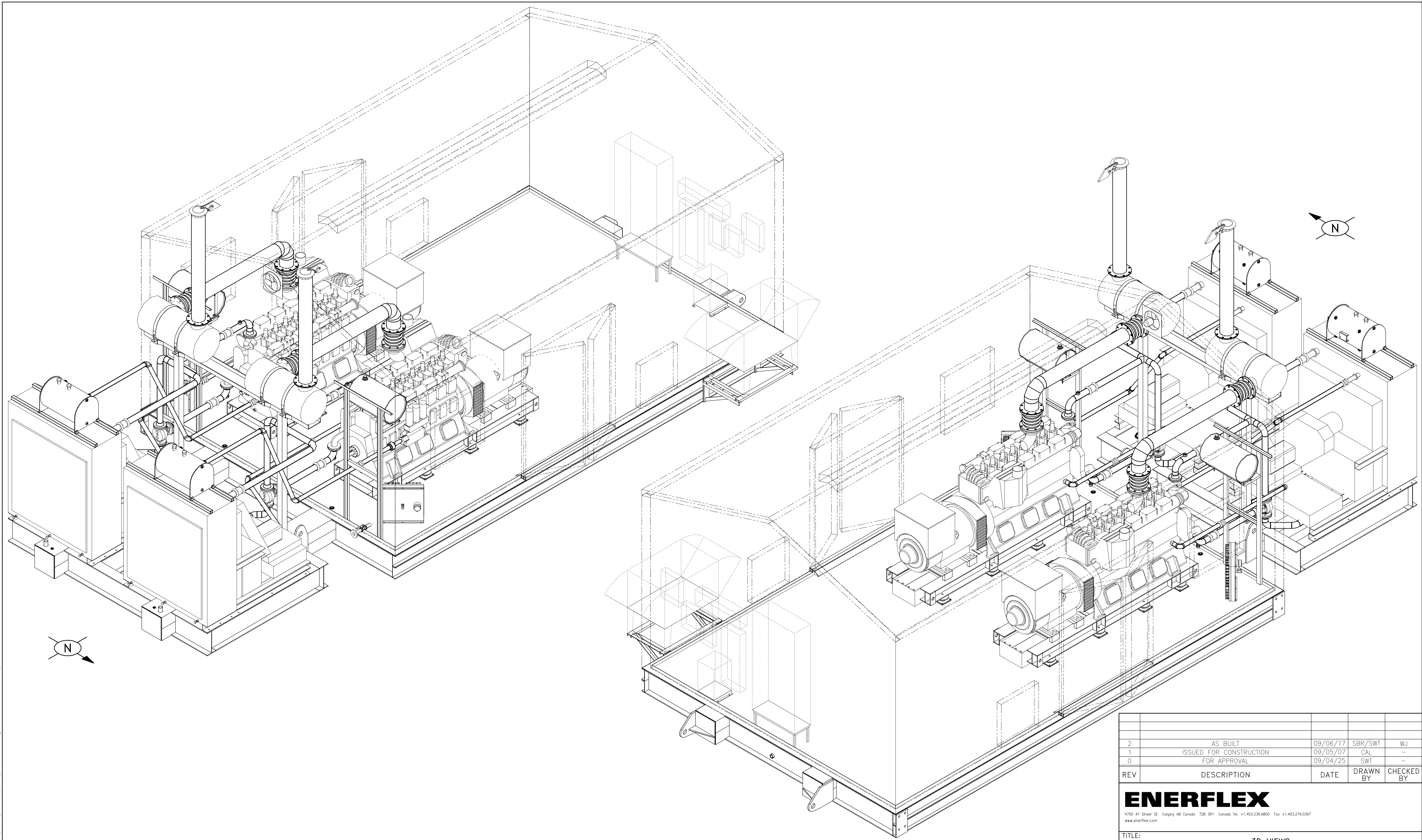
FOR: **EOG RESOURCES CANADA LTD.**
 (MAXHAMISH)

CONSULTANT: **SWT** LSD: d-36-1/94-0-14
 P.O.: 09-037 JOB No.: 090334

DRWN BY: SWT	DESIGN BY: SWT	DATE: 09/04/21	DWG. No.	SHEET 2 (OF 3)
DATE: 09/04/25	CHKD BY: WJ	DATE: 09/06/17	GA-090334	
SCALE: NTS	APPVD BY: WJ	DATE: 09/05/07		

N:\ENERFLEX\Limited_Opex\Projects\2009\090334\Other\GA-090334.dwg Jun 18, 2009 - 5:11pm
 CHKD BY: NTS

N:\EFCV\Limited_Ops\Projects\2009\090334\Orino\GA-090334.dwg Jun 18, 2009 - 5:12pm



3D VIEWPOINTS

REV	DESCRIPTION	DATE	DRAWN BY	CHECKED BY
2	AS BUILT	09/06/17	SBR/SWT	WJ
1	ISSUED FOR CONSTRUCTION	09/05/07	CAL	-
0	FOR APPROVAL	09/04/25	SWT	-

ENERFLEX
 4700 47 Street SE Calgary AB Canada T2B 3R1 Canada Tel. +1.403.236.6800 Fax +1.403.279.0367
 www.enerflex.com

TITLE: **3D VIEWS**
P400, WAUKESHA VGF-H24GL (DOUBLE)
 DUAL 400 kW NATURAL GAS GENERATOR PACKAGE

FOR: **EOG RESOURCES CANADA LTD.**
 (MAXHAMISH)

CONSULTANT: **SWT** P.O.: **09-037** LSD: **d-36-1/94-0-14** JOB No.: **090334**

DRWN BY: SWT	DESIGN BY: SWT	DATE: 09/04/21	DWG. No.	SHEET 3 (OF 3)
DATE: 09/04/25	CHKD BY: WJ	DATE: 09/06/17	GA-090334	
SCALE: NTS	APPVD BY: WJ	DATE: 09/05/07		