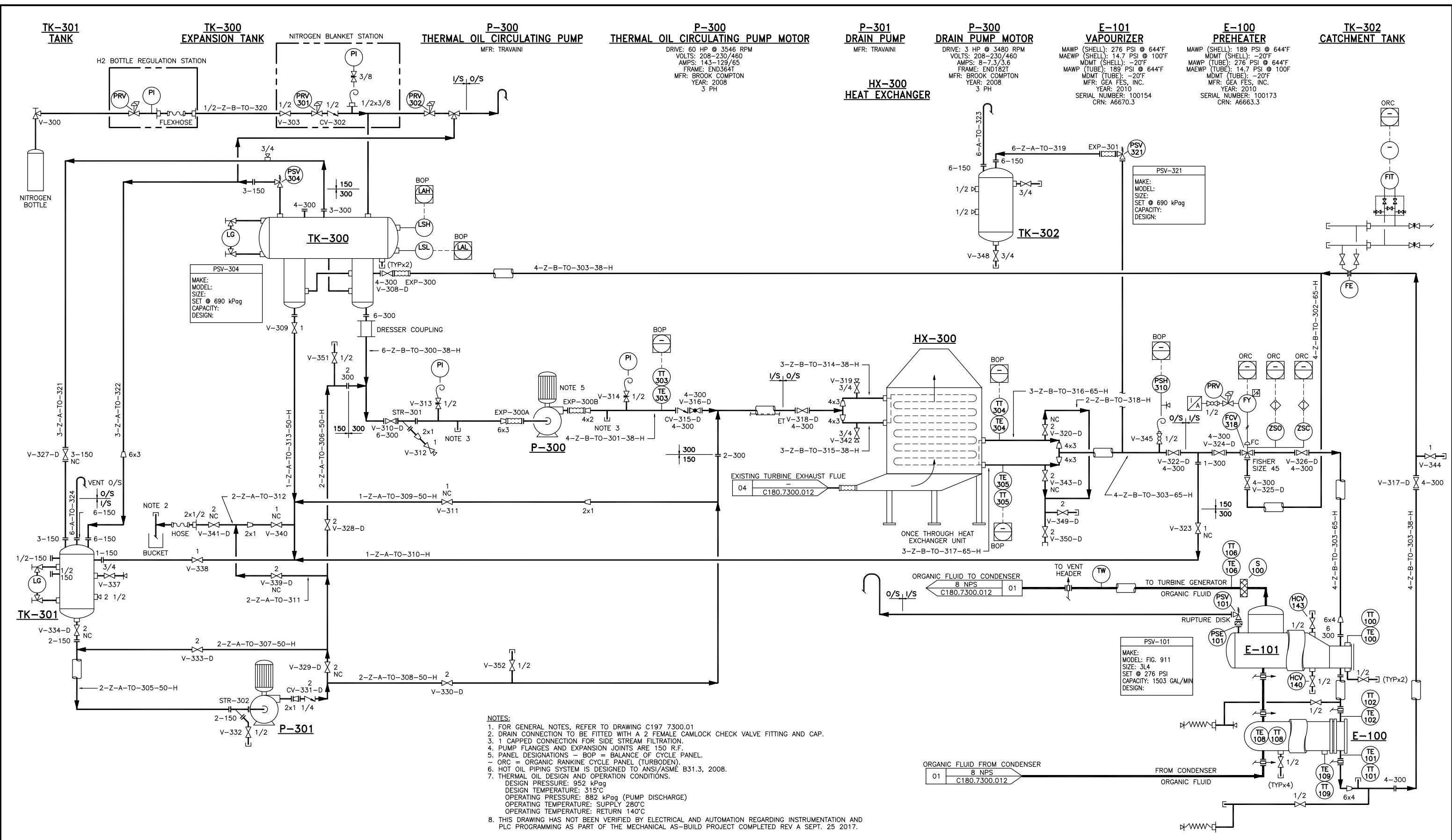


PSV-102
 MAKE: FIKE
 MODEL:
 SIZE: 3L4
 SET @ 87 PSI
 CAPACITY: 844 GAL/MIN
 DESIGN:

SET @ 87 PSI
 RUPTURE DISK
 NO INSUL
 INSULATION

NOTES:
 1. ALL VALVES ARE VENDOR TAGGED.
 2. THIS DRAWING HAS NOT BEEN VERIFIED BY ELECTRICAL AND AUTOMATION REGARDING INSTRUMENTATION AND PLC PROGRAMMING AS PART OF THE MECHANICAL AS-BUILD PROJECT COMPLETED REV A SEPT. 25 2017.

REFERENCE DRAWINGS	REVISED BY _____ DATE _____ AUTHORIZED BY _____ APPROVED BY _____	REVISED BY _____ DATE _____ AUTHORIZED BY _____ APPROVED BY _____	REVISED BY _____ DATE _____ AUTHORIZED BY _____ APPROVED BY _____	REVISED BY _____ DATE _____ AUTHORIZED BY _____ APPROVED BY _____	REVISED BY _____ DATE _____ AUTHORIZED BY _____ APPROVED BY _____	REVISED BY _____ DATE _____ AUTHORIZED BY _____ APPROVED BY _____	REVISED BY _____ DATE _____ AUTHORIZED BY _____ APPROVED BY _____	REVISED BY _____ DATE _____ AUTHORIZED BY _____ APPROVED BY _____	REVISED BY _____ DATE _____ AUTHORIZED BY _____ APPROVED BY _____	CONSULTANT'S LOGO Stantec	ENGINEERS STAMP	DRAFTING DEPT. DRAWN BY: K.OBENAUER CHECKED BY: M.READSHAW DATE: 2017-06-28 DESIGN DEPT. DESIGNED BY: _____ SUBMITTED BY: _____ APPROVED BY: _____ DATE APPROVED: _____	TransGas A SaskEnergy Company PIPING & INSTRUMENT DIAGRAM WASTE HEAT RECOVERY UNIT REGENERATOR CONDENSER ROSETOWN COMP STATION NE 21-30-14 W3M	ACAD FILE: C180.07300.012 FILE REF. SCALE: N.T.S. DRAWING No. C180.7300.012 SHEET 1 OF 4 REV. PLOT DATE: 2018-05-17
--------------------	--	--	--	--	--	--	--	--	--	-------------------------------------	-----------------	---	--	--



- NOTES:**
- FOR GENERAL NOTES, REFER TO DRAWING C197 7300.01
 - DRAIN CONNECTION TO BE FITTED WITH A 2 FEMALE CAMLOCK CHECK VALVE FITTING AND CAP.
 - 1 CAPPED CONNECTION FOR SIDE STREAM FILTRATION.
 - PUMP FLANGES AND EXPANSION JOINTS ARE 150 R.F.
 - PANEL DESIGNATIONS - BOP = BALANCE OF CYCLE PANEL.
 - HOT OIL PIPING SYSTEM IS DESIGNED TO ANSI/ASME B31.3, 2008.
 - THERMAL OIL DESIGN AND OPERATION CONDITIONS.
 DESIGN PRESSURE: 952 kPa(g)
 DESIGN TEMPERATURE: 315°C
 OPERATING PRESSURE: 882 kPa(g) (PUMP DISCHARGE)
 OPERATING TEMPERATURE: SUPPLY 280°C
 OPERATING TEMPERATURE: RETURN 140°C
 - THIS DRAWING HAS NOT BEEN VERIFIED BY ELECTRICAL AND AUTOMATION REGARDING INSTRUMENTATION AND PLC PROGRAMMING AS PART OF THE MECHANICAL AS-BUILD PROJECT COMPLETED REV A SEPT. 25 2017.

REFERENCE DRAWINGS	REVISED BY _____ DATE _____ AUTHORIZED BY _____ APPROVED BY _____	REVISED BY _____ DATE _____ AUTHORIZED BY _____ APPROVED BY _____	REVISED BY _____ DATE _____ AUTHORIZED BY _____ APPROVED BY _____	REVISED BY _____ DATE _____ AUTHORIZED BY _____ APPROVED BY _____	REVISED BY _____ DATE _____ AUTHORIZED BY _____ APPROVED BY _____	REVISED BY _____ DATE _____ AUTHORIZED BY _____ APPROVED BY _____	REVISED BY _____ DATE _____ AUTHORIZED BY _____ APPROVED BY _____	REVISED BY _____ DATE _____ AUTHORIZED BY _____ APPROVED BY _____	REVISED BY _____ DATE _____ AUTHORIZED BY _____ APPROVED BY _____	CONSULTANT'S LOGO 	ENGINEERS STAMP	DRAFTING DEPT. DRAWN BY _____ CHECKED BY _____ DATE _____ DESIGN DEPT. DESIGNED BY _____ CHECKED BY _____ SUBMITTED BY _____ APPROVED BY _____ DATE APPROVED _____	<p>TransGas A Saskatchewan Company</p> <p>PIPING & INSTRUMENT DIAGRAM WASTE HEAT RECOVERY UNIT THERMAL OIL SYSTEM ROSETOWN COMP STATION NE 21-30-14 W3M</p>	ACAD FILE: C180.07300.012 FILE REF. SCALE: N.T.S. DRAWING No. C180.7300.012 SHEET 2 OF 4 PLOT DATE: 2018-05-17
--------------------	--	--	--	--	--	--	--	--	--	-----------------------	-----------------	---	---	---

HX-200
AIR COOLED HEAT EXCHANGER

AS-200
AIR SEPARATOR

TK-200
WATER/GLYCOL EXPANSION TANK

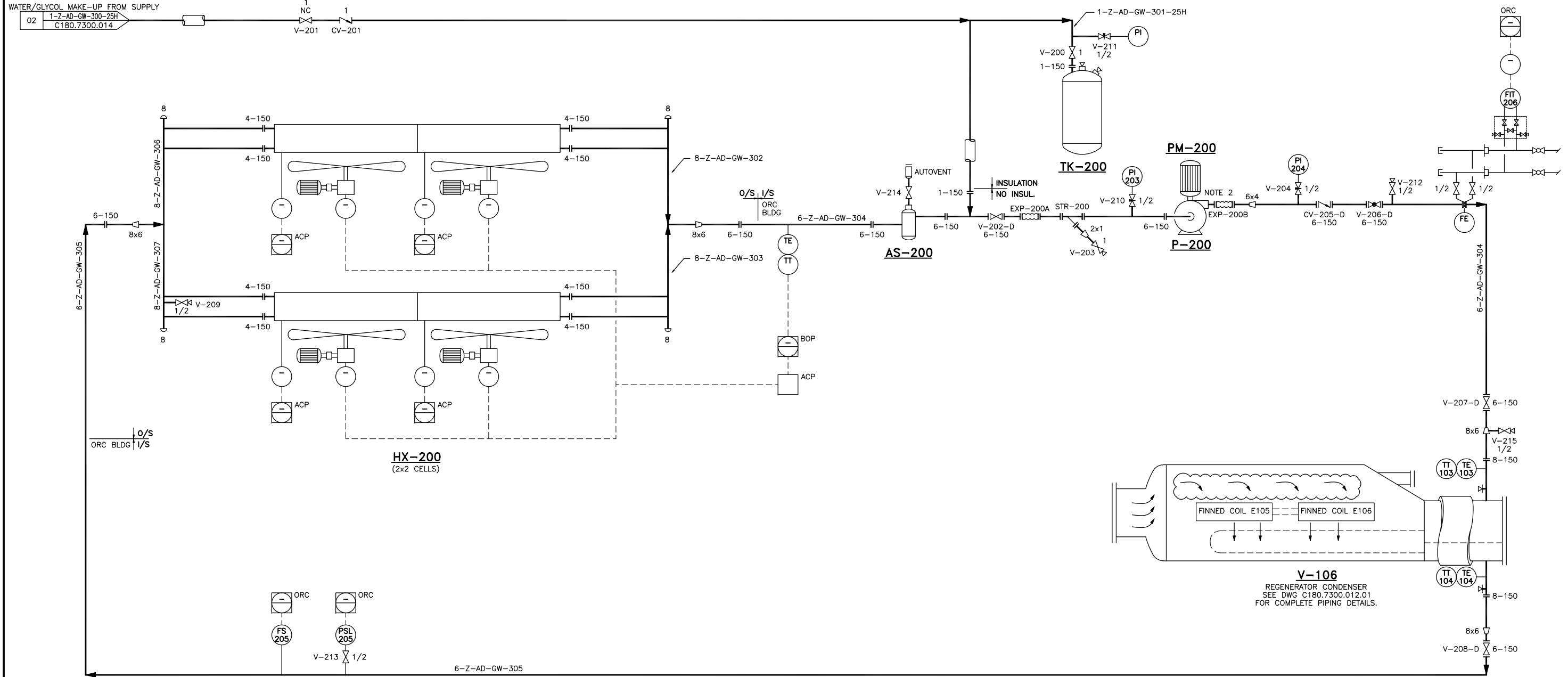
MAWP: 125 PSI @ 240°F
CAPACITY: 400L
MFR: AMTROL INC.
YEAR: 2010
SERIAL NUMBER: 220354
CRN: K5124.5

P-200
COOLING WATER PUMP

DRIVE: 1800 RPM
CAPACITY: 900 GPM
MODEL: 3196
MFR: GOULD
SERIAL NUMBER: A766P496

PM-200
COOLING WATER PUMP MOTOR

DRIVE: 40HP @ 1770 RPM
VOLTS: 460
AMPS: 92/46
FRAME: END324T
60HZ/3PH



NOTES:

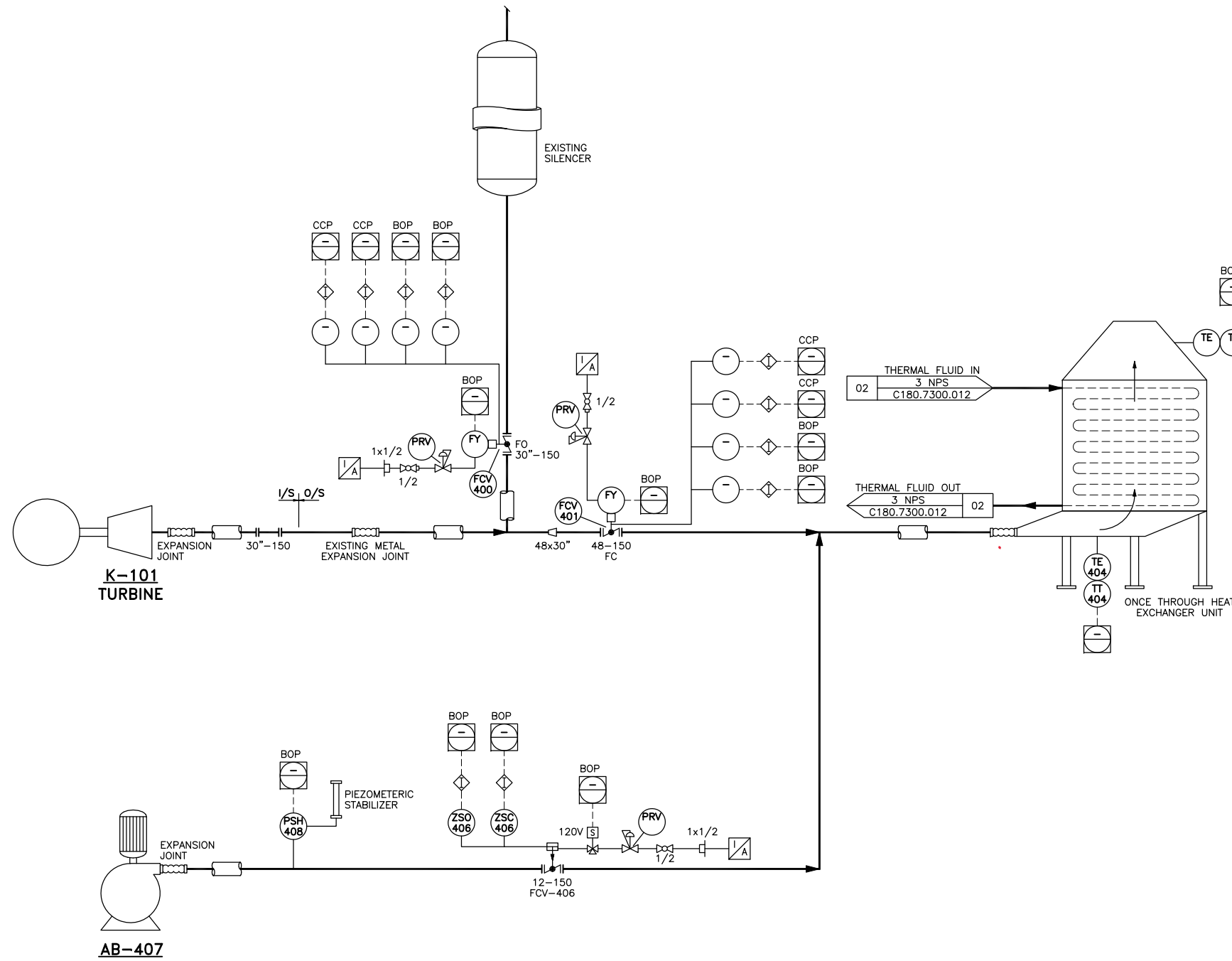
- FOR GENERAL NOTES, REFER TO DRAWING C197 7300.01
- PUMP AND FLEXIBLE CONNECTOR ON PUMP DISCHARGE ARE SUPPLIED WITH 150FF FLANGES.
- PANEL DESIGNATION:
ARC - AIR COOLED HEAT EXCHANGER CONTROL PANEL.
BOP - BALANCE PLANT PANEL.
ORC - ORGANIC RANKINE CYCLE PANEL (TURBODEN).
- COOLING WATER DESIGN AND OPERATION CONDITIONS.
DESIGN PRESSURE 700 kPa_g.
DESIGN TEMPERATURE 90°C.
OPERATING PRESSURE (PUMP DISCHARGE) 265 kPa_g.
OPERATING TEMPERATURE (SUPPLY) 9°C-40°C, (RETURN) 29°C-60°C.
- THIS DRAWING HAS NOT BEEN VERIFIED BY ELECTRICAL AND AUTOMATION REGARDING INSTRUMENTATION AND PLC PROGRAMMING AS PART OF THE MECHANICAL AS-BUILD PROJECT COMPLETED REV A SEPT. 25 2017.

REFERENCE DRAWINGS	REVISED BY _____ DATE _____ AUTHORIZED BY _____ APPROVED BY _____	REVISED BY _____ DATE _____ AUTHORIZED BY _____ APPROVED BY _____	REVISED BY _____ DATE _____ AUTHORIZED BY _____ APPROVED BY _____	REVISED BY _____ DATE _____ AUTHORIZED BY _____ APPROVED BY _____	REVISED BY _____ DATE _____ AUTHORIZED BY _____ APPROVED BY _____	REVISED BY _____ DATE _____ AUTHORIZED BY _____ APPROVED BY _____	REVISED BY MR _____ DATE 2018-05-17 AUTHORIZED BY _____ APPROVED BY _____	REVISED BY KO _____ DATE 2017-09-25 AUTHORIZED BY _____ APPROVED BY _____	CONSULTANT'S LOGO 	ENGINEERS STAMP	DRAFTING DEPT. DRAWN BY K.OBENAUER CHECKED BY M.READSHAW DATE 2017-06-28 DESIGN DEPT. DESIGNED BY _____ CHECKED BY _____ SUBMITTED BY _____ APPROVED BY _____ DATE APPROVED _____	 PIPING & INSTRUMENT DIAGRAM WASTE HEAT RECOVERY UNIT WATER/GLYCOL SYSTEM ROSETOWN COMP STATION NE 21-30-14 W3M	ACAD FILE: C180.07300.012 FILE REF. SCALE: N.T.S. DRAWING No. C180.7300.012 SHEET 3 OF 4 REV. PLOT DATE: 2018-05-17
--------------------	--	--	--	--	--	--	--	--	-----------------------	-----------------	--	---	--

AB-407
AIR BLOWER

AB-407
AIR BLOWER MOTOR
DRIVE: 3 HP @ 1755/1430 RPM
VOLTS: 230/460 - 190/380
AMPS: 7.47/3.74 - 8.78/4.39
60/50HZ
MFR: TECO WESTINGHOUSE
SERIAL NUMBER: KV310A302001

HX-300
HEAT EXCHANGER



NOTES:
1. THIS DRAWING HAS NOT BEEN VERIFIED BY ELECTRICAL AND AUTOMATION REGARDING INSTRUMENTATION AND PLC PROGRAMMING AS PART OF THE MECHANICAL AS-BUILD PROJECT COMPLETED REV A SEPT. 25 2017.

REFERENCE DRAWINGS	REVISED BY	REVISED BY	REVISED BY	REVISED BY	REVISED BY	REVISED BY	REVISED BY	CONSULTANT'S LOGO	ENGINEERS STAMP	DRAFTING DEPT.	TransGas A SaskEnergy Company		ACAD FILE:
	G	F	E	D	C	B	A	Stantec		DRAWN BY K.OBENAUER CHECKED BY M.READSHAW DATE 2017-06-28	PIPING & INSTRUMENT DIAGRAM WASTE HEAT RECOVERY UNIT WASTE HEAT RECOVERY EXCHANGER ROSETOWN COMP STATION NE 21-30-14 W3M		FILE REF: C180.07300.012
													DESIGN DEPT.
										DESIGNED BY			PLOT DATE: 2018-05-17
										CHECKED BY			B
										APPROVED BY			
										DATE APPROVED			

AS-BUILT PER TRANSGAS COMMENTS
AFE# 201789048
(STANTEC PROJ# 110902803)

MECHANICAL AS-BUILD
(STANTEC PROJ# 110902803)
NOTE 1