

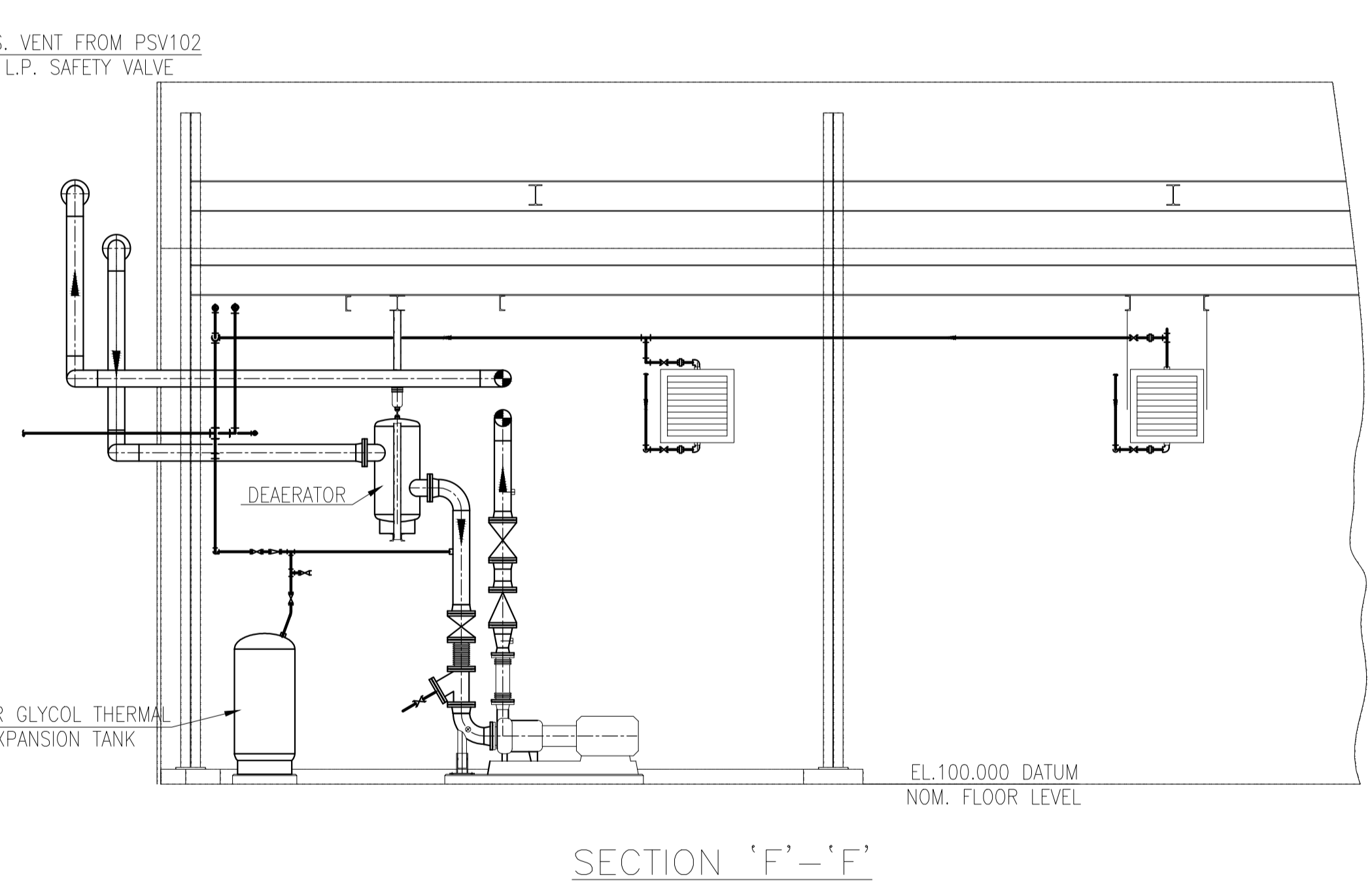
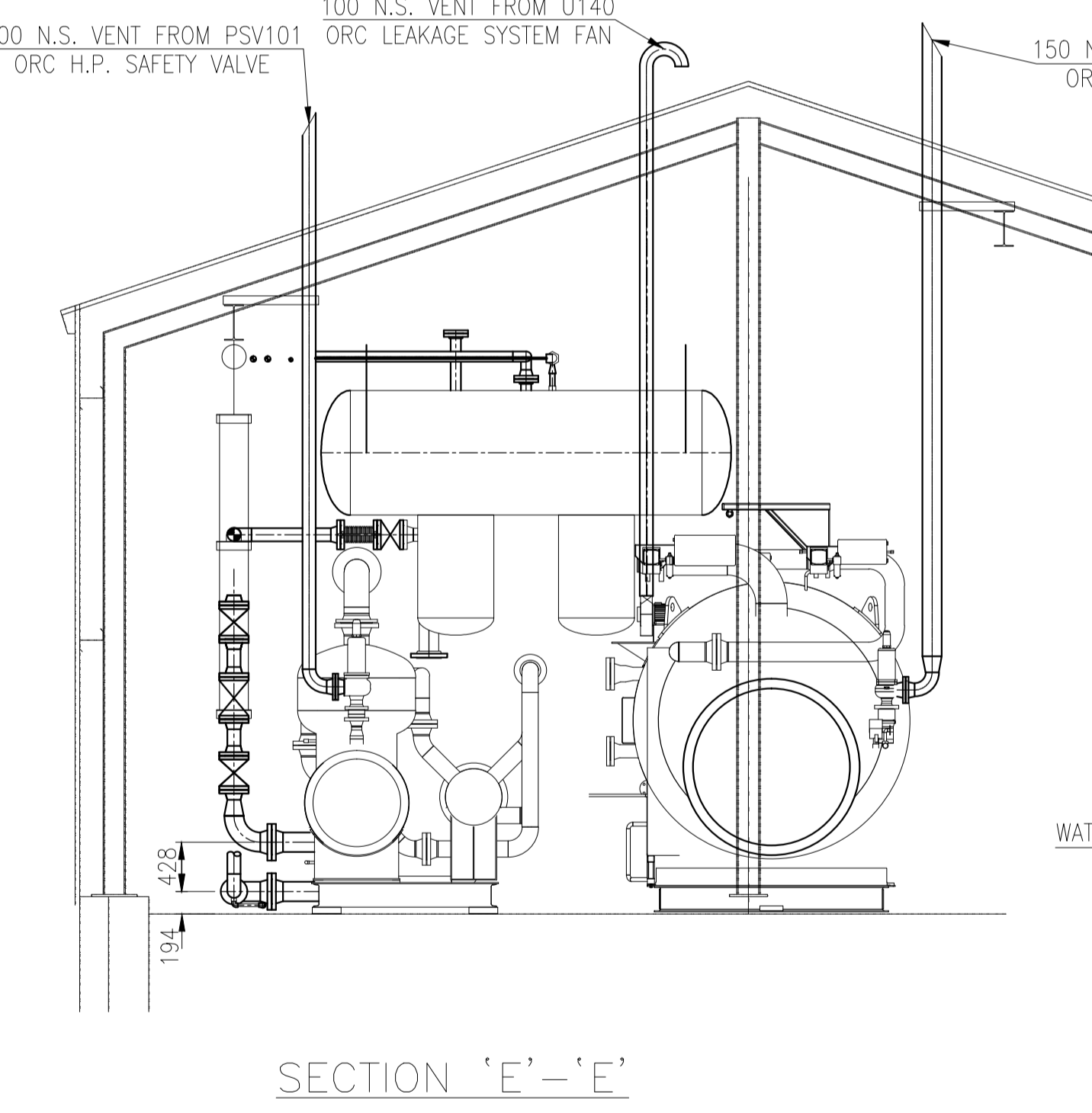
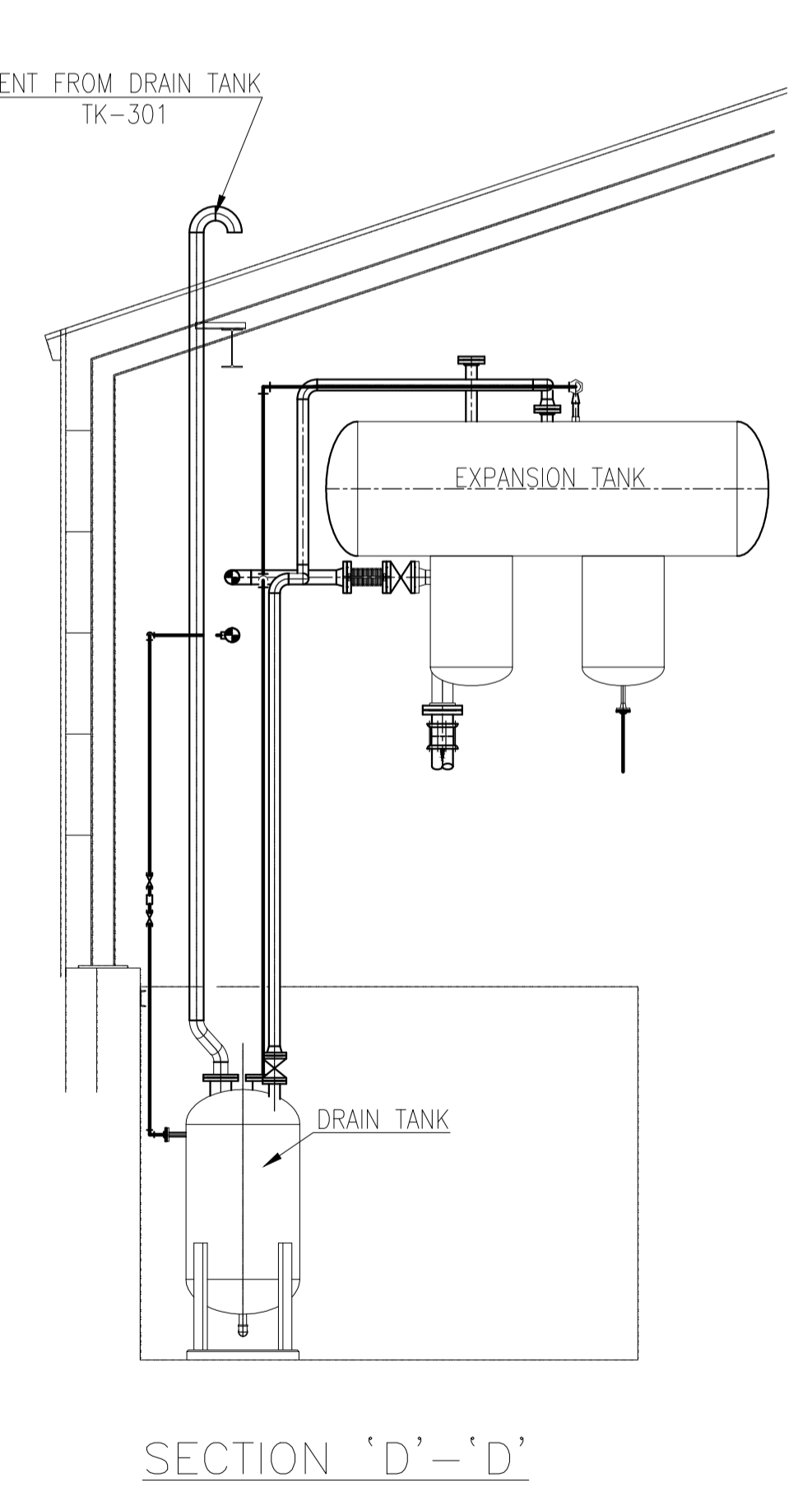
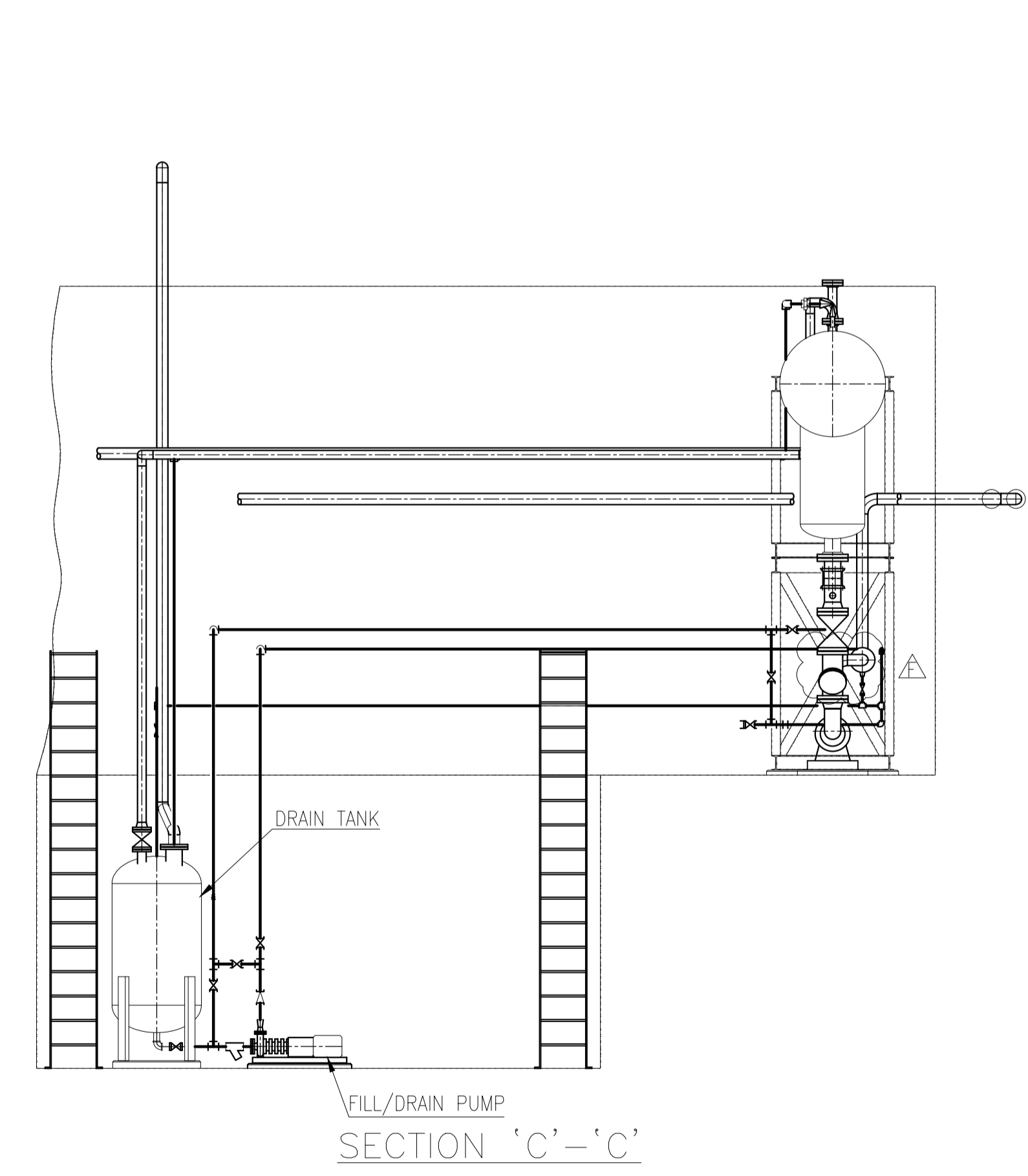
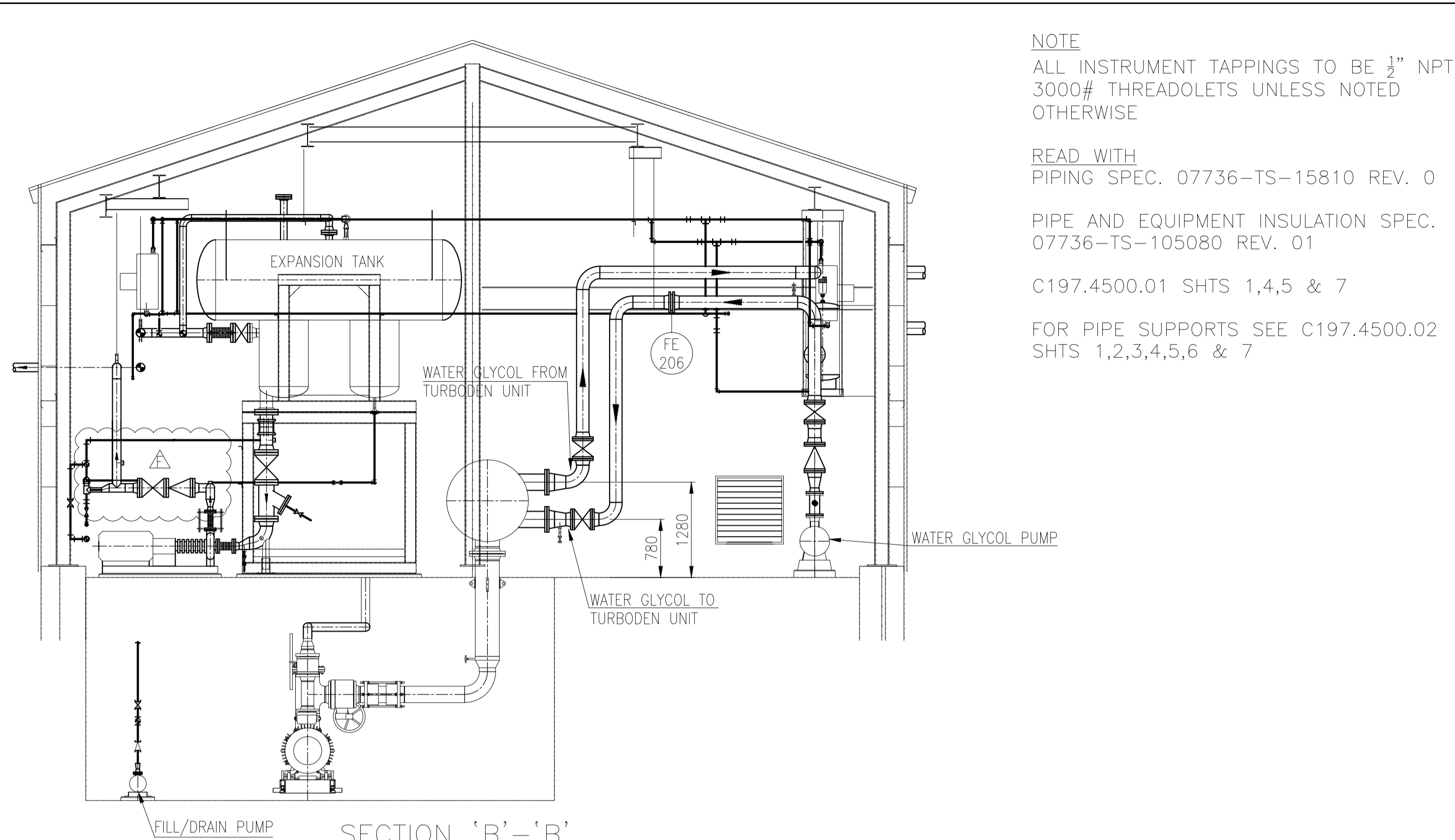
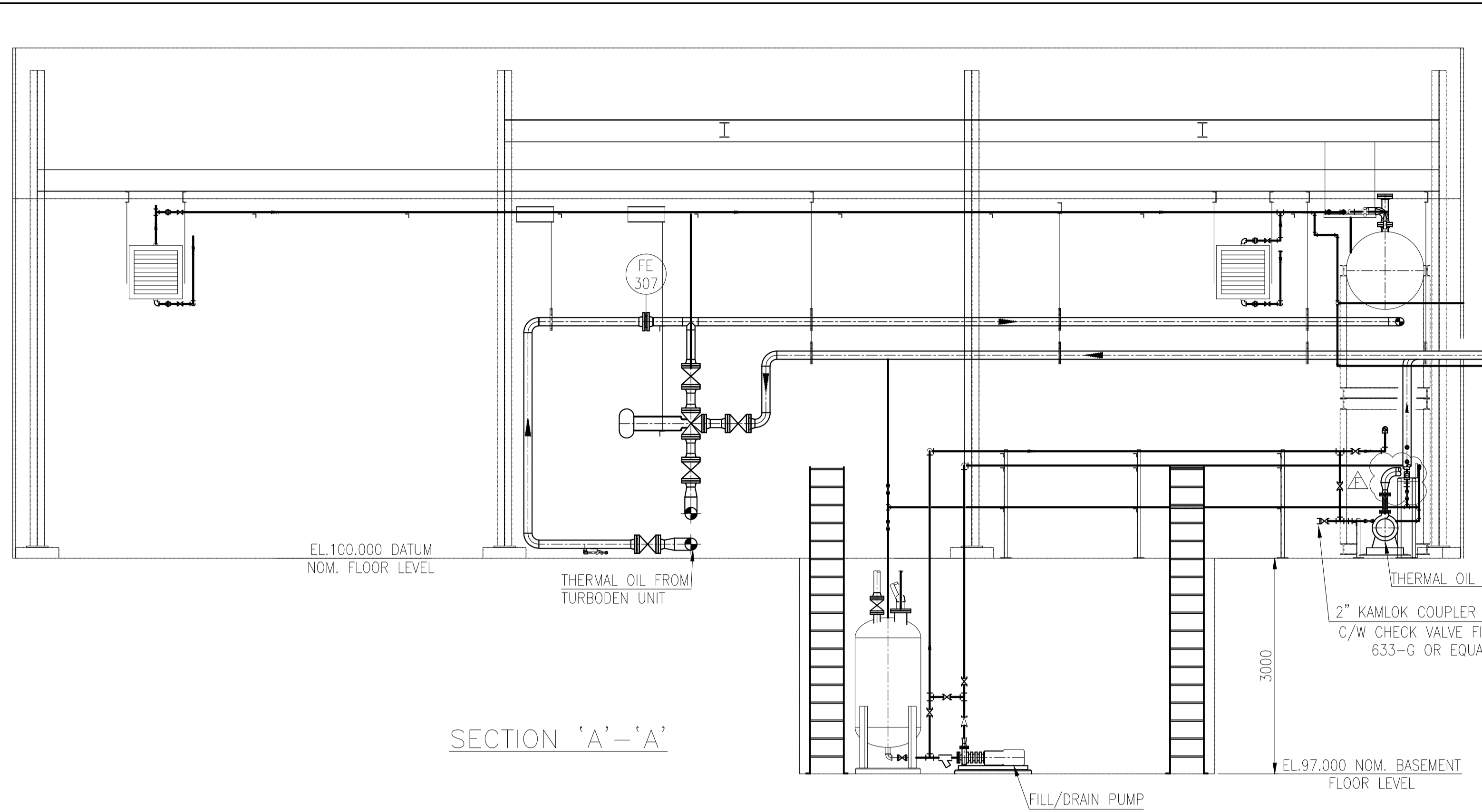
NOTE  
 ALL INSTRUMENT TAPPINGS TO BE 1/2" NPT  
 3000# THREDOLETS UNLESS NOTED  
 OTHERWISE

READ WITH  
 PIPING SPEC. 07736-TS-15810 REV. 0

PIPE AND EQUIPMENT INSULATION SPEC.  
 07736-TS-105080 REV. 01

C197.4500.01 SHTS 1,4,5 & 7

FOR PIPE SUPPORTS SEE C197.4500.02  
 SHTS 1,2,3,4,5,6 & 7



**CAN-ECOSSE ENGINEERING INC.**  
 REVISED DWG.  
 SUPERCEDES PREVIOUS  
 ISSUE  
 MAR. 29, 2011

REFERENCE DRAWINGS	REVISED BY _____ DATE _____ AUTHORIZED BY _____ APPROVED BY _____	REVISED BY <u>A THOMPSON</u> DATE <u>9.03.2011</u> AUTHORIZED BY <u>I HARRIS</u> APPROVED BY <u>K STEWART</u>	REVISED BY <u>A THOMPSON</u> DATE <u>23.12.2010</u> AUTHORIZED BY <u>I HARRIS</u> APPROVED BY <u>K STEWART</u>	REVISED BY <u>A THOMPSON</u> DATE <u>15.10.2010</u> AUTHORIZED BY <u>I HARRIS</u> APPROVED BY <u>K STEWART</u>	REVISED BY <u>A THOMPSON</u> DATE <u>17.09.2010</u> AUTHORIZED BY <u>I HARRIS</u> APPROVED BY <u>K STEWART</u>	REVISED BY <u>A THOMPSON</u> DATE <u>20.08.2010</u> AUTHORIZED BY <u>I HARRIS</u> APPROVED BY <u>K STEWART</u>	REVISED BY <u>A THOMPSON</u> DATE <u>14.05.2010</u> AUTHORIZED BY <u>I HARRIS</u> APPROVED BY <u>K STEWART</u>	CONSULTANT'S LOGO <b>FOUND ENERGY</b> An Aecon Company	ENGINEERS STAMP	DRAFTING DEPT. DRAWN BY <u>A THOMPSON</u> CHECKED BY <u>I.H.</u> DATE <u>15/10/10</u>	<b>TransGas</b> A SaskEnergy Company O.R.C BUILDING PIPING PIPING ARRANGEMENT SECTIONS ROSETOWN W.H.R. PLANT NE 21-30-14-W3M	ACAD FILE: <u>C197.4500.002.2</u> FILE REF.
		THERMAL OIL PUMP DISCHARGE MODIFIED NOW DIRECTLY ON EXPANSION JOINT	MODIFIED BASED ON UPDATED EQUIPMENT DETAILS	ISSUED FOR CONSTRUCTION	ISSUED FOR REVIEW AND COMMENT	ISSUED FOR REVIEW AND COMMENT	ISSUED FOR REVIEW AND COMMENT		DESIGN DEPT. DESIGNED BY <u>A THOMPSON</u> CHECKED BY <u>??</u> SUBMITTED BY <u>??</u>	SCALE: 1:50		DRAWING No. <b>C197.4500.01</b> SHEET <u>2</u> of <u>13</u>
									APPROVED BY <u>??</u> DATE APPROVED <u>??</u>		PLOT DATE: <u>19/10/10</u>	REV. F