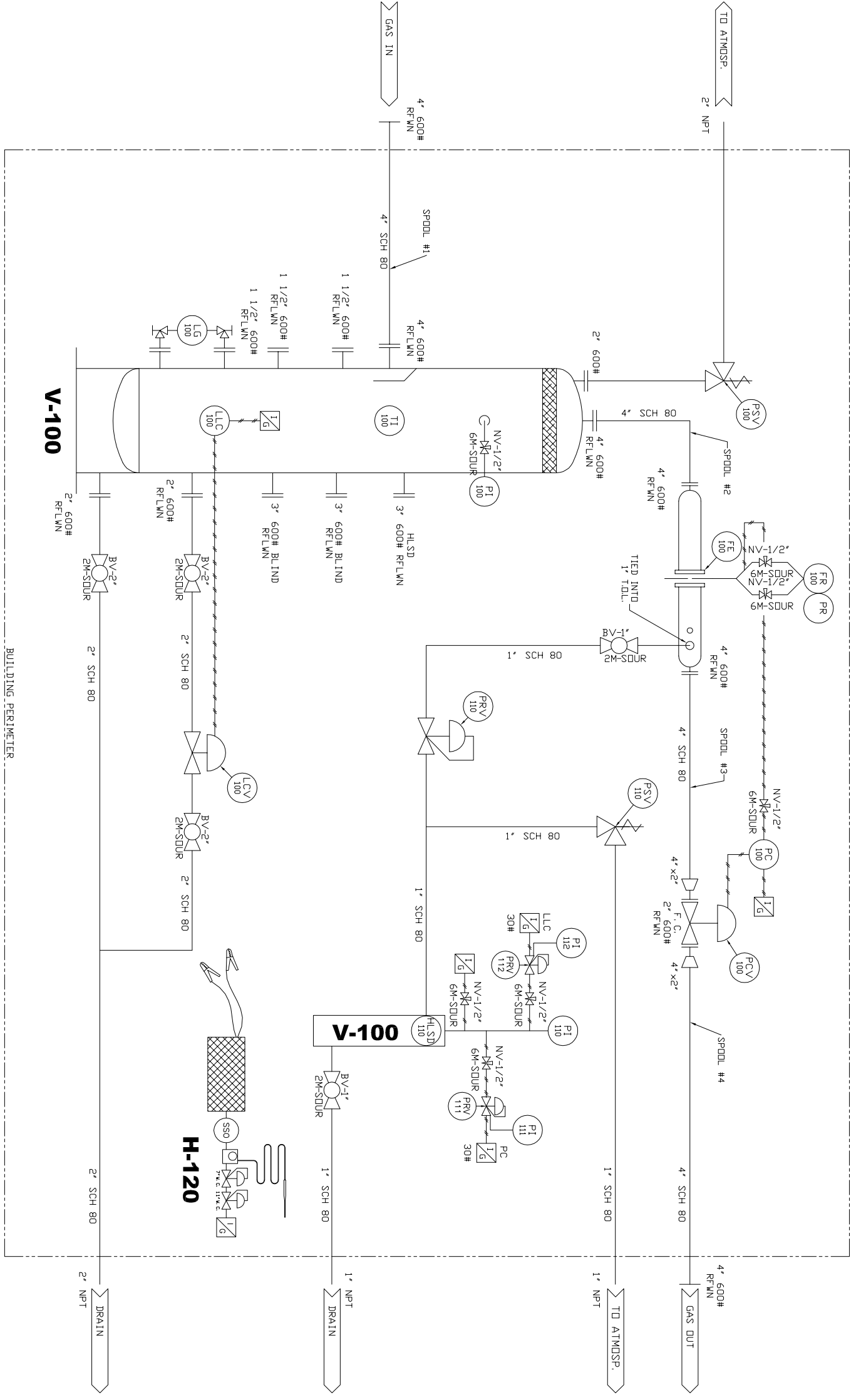


V-100
 30" O.D. x 10'0" S/S
 1440 PSI M.A.W.P. @ 100°F
 3 PHASE, DRESSED 2 PHASE,
 SOUR STRESS RELIEVED
 100% X-RAYED

V-110
 8" O.D. x 36" S/S
 150 PSI, M.A.W.P. @ 100°F
 FUEL GAS SCRUBBER
 STRESS RELIEVED

H-120
 C.C.I.WX 12 x 24 (8,000 BTU/HR
 RATING) CATALYTIC HEATER,
 NATURAL GAS, GRILL GUARD,
 SAFETY SHUT OFF, THERMOSTAT,
 VENT HOOD, SOUR GAS FILTER, 25'
 OF 12 VOLT START CABLES

SKID
 80" x 80" EL
 PRODUCT # 07504



SPOOL DATA:

SPOOL #	WEL. PROC.	X-RAY	STRESS	DESIGN	TEST
1 thru 4	ASL-8	100%	YES	1440#	2160#

NOTES:

1) SEE DRAWING # DM1404L FOR DESIGN NOTES.

REVISIONS:

NO.	DESCRIPTION	DATE
0	APPROVAL	04.19.07


BILL OF MATERIALS:

MARK	QTY	DESCRIPTION
LLC 100	1	2" NPT, NDRISTAL 1001A LIQUID LEVEL CONTROLLER, SNAP ACTING, C/W FLUAT, MOUNTED ON A 3" 600# HUB BLIND TAPPED 2", SOUR FISHER/FISHER CLONE 4150 PRESSURE CONTROLLER, 0 - 1500#, DIRECT ACTING, SOUR
PC 100	1	2" NPT, NDRISTAL 2220 LEVEL CONTROL VALVE, 3/4" TRIM, SOUR VALVE, FISHB. FISHER CLONE 667 ET-BODY PRESSURE CONTROL VALVE, FISHER ANDU 627 REGULATOR, 1/8" TRIM, 70
PCV 100	1	150#, FISHER ANDU 7 CFR PRESSURE REGULATING VALVE, 5 - 1/4" NPT, VENTED BONNET, SOUR
PRV 110	1	35# RANGE, FISHER 67 CFR PRESSURE REGULATING VALVE, 5 - 1/4" NPT, VENTED BONNET, SOUR
PRV 111	1	35# RANGE, VENTED BONNET, SOUR
PRV 112	1	35# RANGE, VENTED BONNET, SOUR
LG 100	1	3/4" NPT, PENBERTHY 18M6 REFLEX GAUGE GLASS, C/W #330J GAUGE COCKS, SOUR
PI 100	1	1/2" NPT x 4" FACE, PRESSURE GAUGE, 0 - 1500#, SOUR
PI 110	1	1/4" NPT x 2 1/2" FACE, PRESSURE GAUGE, 0 - 200#, SOUR
PI 111	1	1/4" NPT x 2 1/2" FACE, PRESSURE GAUGE, 0 - 60#, SOUR
PI 112	1	1/4" NPT x 2 1/2" FACE, PRESSURE GAUGE, 0 - 60#, SOUR
TI 100	1	1/2" NPT x 3" x 6" STEM, TEMPERATURE INDICATOR, -40° TO 160°F, C/W 316SS THERMOWELL, SOUR
FE 100	1	4" 600# RF, DANIEL SENIOR DRIFICE FITTING METER RUN, AGA 3C (1991), SCH80, RIGHT HAND CRANK, <<RECONDITIONED>>, SOUR BARTON 20E DRI-FLD RECORDER (2 PEN), 0 - 1500 PSI, 0 - 100" WC, C/W 3 VALVE 316SS MANIFOLD, <<RECONDITIONED>>, SOUR
FR 100	1	2" NPT, TAYLOR 8200 PRESSURE SAFETY VALVE, SET @ 1440#, SOUR
PSV 100	1	2" NPT, TAYLOR 8200 PRESSURE SAFETY VALVE, SET @ 150#, SOUR
PSV 110	1	2" LARSEN & D'AMICO HIGH LEVEL FUEL-GAS SHUTDOWN, SOUR
HLSD 110	1	1" NPT 2000#, STOCK BALL VALVE, SOUR
BV1NPT-2MS	2	2" NPT 2000#, STOCK BALL VALVE, SOUR
BV2NPT-2MS	3	2" NPT 2000#, STOCK BALL VALVE, SOUR
NV1/2NPT-6MS	7	1/2" NPT 6000#, ANDERSSON GREENWOOD NEEDLE VALVE, 316SS, SOUR

CUSTOMER:

ARGO SALES STOCK

TITLE:
 30" O.D. x 10'0" S/S
 1440 PSI M.A.W.P. @ 100°F
 3 PHASE, DRESSED 2 PHASE,
 SOUR SERVICE SEPARATOR
 P & ID



ARGO SALES LTD

P.O. Box 11160
 NISKU INDUSTRIAL PARK
 NISKU, ALBERTA
 T9E 8A6

DRAWN BY: <i>CY</i>	SCALE: N.T.S.
CHECKED BY:	DATE: 04/19/07
APPROVED BY:	QUOTE: -
SHEET 1 OF 3	DWG. #: DM1404P
	REV.: A

CUSTOMER:

ARGO SALES STOCK

TITLE: 30" x 10'0" S/S 1440# S/S SOUR SEPARATOR

SERIAL #: P110034