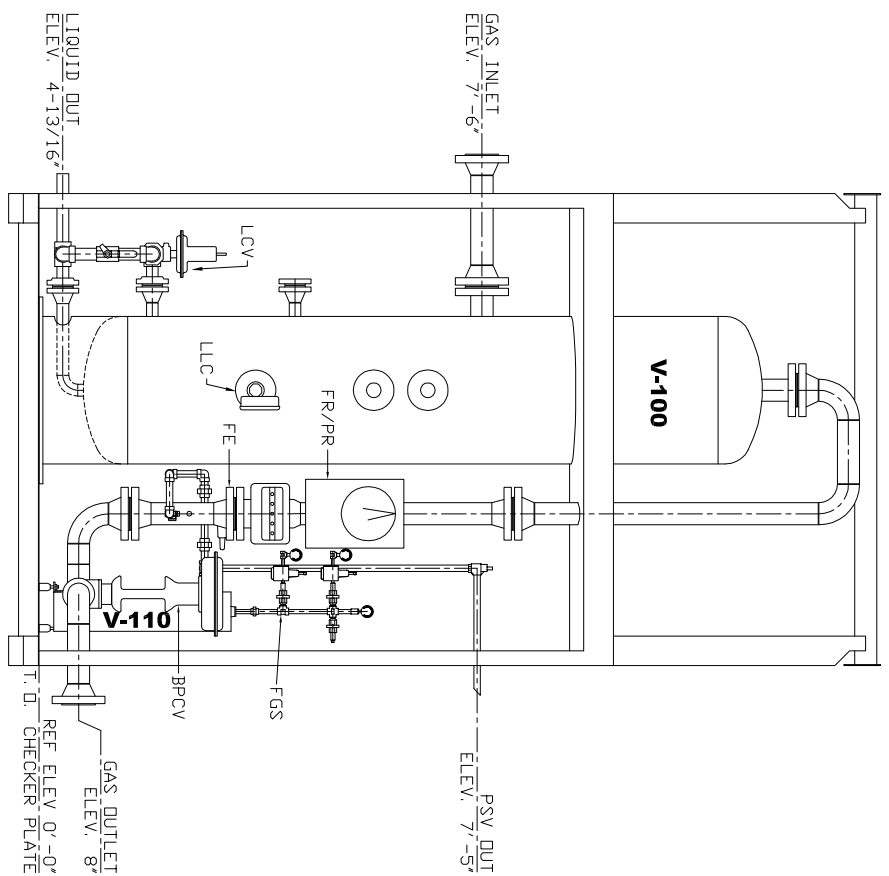
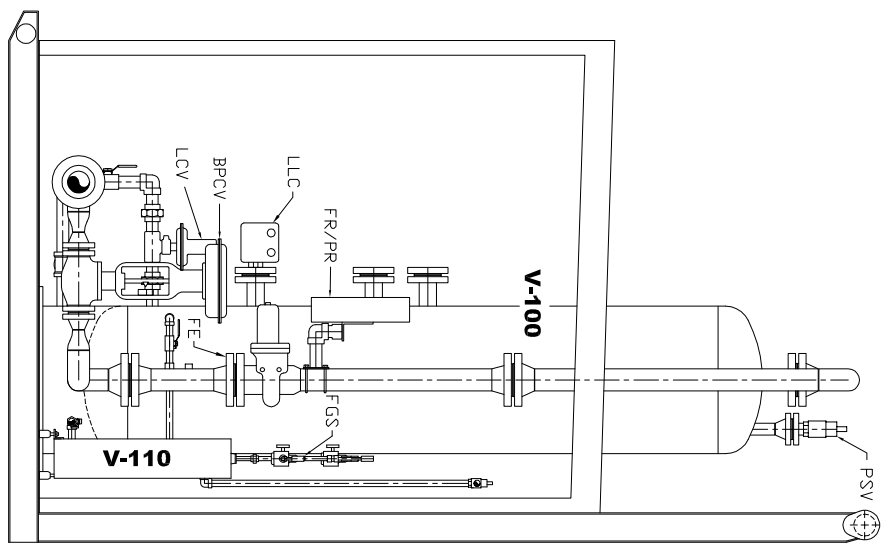


PLAN



FRONT ELEVATION



SIDE ELEVATION

V-100
 30" O.D. x 10'0" S/S
 1440 PSI, M.A.W.P. @ 100°F
 3 PHASE, DRESSED 2 PHASE,
 SOUR STRESS RELIEVED
 100% X-RAYED

V-110
 8" O.D. x 36" S/S
 150 PSI, M.A.W.P. @ 100°F
 FUEL GAS SCRUBBER
 STRESS RELIEVED

H-120
 C.I.1 WX 12 x 24 (8,000 BTU/HR
 RATING) CATALYTIC HEATER,
 NATURAL GAS, GRILL GUARD,
 SAFETY SHUT OFF, THERMOSTAT,
 VENT HOOD, SOUR GAS FILTER, 25'
 OF 12 VOLT START CABLES

SKID
 8'0" x 8'0" EL
 PRODUCT #07504

DESIGN NOTES

- GENERAL NOTES
- 1) PIPING TO CONFORM TO ASME B31.3 LATEST EDITION
 - 2) X-RAY ON BUTT WELDED JOINTS: SEE CHART
 - 3) STRESS RELIEVING ON BUTT WELDED SPIDLS: SEE CHART
 - 4) WELDED PIPING STRESS RELIEVED FOR 1 HOUR @ 1150°F
 MAXIMUM HEATING: 400°F/HR FROM 600°F TO 1150°F
 MAXIMUM COOLING: 400°F/HR FROM 1150°F TO 600°F
 - 5) HYDRO TEST ON BUTT WELDED SPIDLS: SEE CHART
 - 6) VENTING INSTRUMENTS TIED TO COMMON HEADER
 - 7) MEASUREMENTS ARE APPROXIMATE

- FINISH NOTES
- 1) VESSEL, SKID & PIPING TO BE BLASTED TO SSPC-SP7 BRUSH BLAST
 - 2) VESSEL, SKID & PIPING TO BE PRIMED WITH ONE COAT OF ARGO SHOD PRIMER
 - 3) VESSEL, SKID & PIPING TO BE FINISHED WITH ONE COAT OF ARGO CLOVERDALE GRAY ENAMEL

- PIPING DESIGN
- 1) THREADED H.P. LINES: SCH 80 WITH 3000# FITTINGS
 - 2) THREADED L.P. LINES: SCH 80 WITH 3000# FITTINGS
 - 3) WELDED PIPING: SCH 80
 - 4) INSTRUMENT TUBING: 316SS
 - 5) INSTRUMENT TUBE FITTINGS: 316SS SWAGELOK
 - 6) INSTRUMENT TUBE FITTINGS: 316SS
 - 7) PROCESS TUBE FITTINGS: 316SS SWAGELOK

- MATERIALS
- 1) PIPE: A106 GR. B
 - 2) NPT FITTINGS: A105
 - 3) FLANGES: A105
 - 4) WELD FITTINGS: A234 WPB
 - 5) PRESSURE GASKETS: 316SS FLEXATATIC
 - 6) PRESSURE BOLLTING: 2HM NUTS/B7M STUDS

- BUILDING
- 1) 8' x 8' x 9' EAVE
 - 2) ALUMINUM EXTERIOR
 - 3) 24 GAUGE FLUTED ALUMINUM INTERIOR
 - 4) 3' x 7' INSULATED STEEL MANDDOR C/W IWG WINDOWS, PANIC HARDWARE, AND LOCKSET.
 - 5) 38" x 36" DOUBLE GLAZED SLIDING WINDOW WITH SCREEN
 - 6) 12' x 12" MANUAL SLIDER WITH SCREEN (2 REQUIRED)

CUSTOMER:
ARGO SALES STOCK

TITLE:
**30" O.D. x 10'0" S/S
 1440# M.A.W.P. @ 100°F
 3 PHASE, DRESSED 2 PHASE,
 SOUR SEPARATOR
 CONSTRUCTION LAYOUT**

P.O. Box 1160
 NISKU INDUSTRIAL
 PARK
 NISKU, ALBERTA
 T9E 8A8

APPROVED BY: _____
 DWG. #: DM1404L
 SHEET 2 OF 3
 REV.: A

SPOOL DATA

SPOOL #	WEL PROC.	X-RAY	STRESS	DESIGN #	TEST #
1 thru 4	ASL-8	100%	YES	1440#	2160#

DESIGN NOTES

1) SEE DRAWING # DM1404P FOR MATERIAL LIST.

REVISIONS

NO.	DESCRIPTION	BY	DATE
0	APPROVAL	CY	04.19.07

SERIAL #:
 FE10034

CUSTOMER:
ARGO SALES STOCK

TITLE:
30" O.D. x 10'0" S/S 1440# SEPARATOR