

NOZZLE SCHEDULE				
TAG	SIZE	DESCRIPTION	LOC.	ELEV.
N1	4"	150# RFSO NOZZLE w/ BLIND (SPARE)	PLAN	3'-5 11/16"
N2	3"	150# RFSO NOZZLE (LIT-8000)	PLAN	3'-5 11/16"
N3	4"	150# RFSO NOZZLE w/ BLIND (SPARE)	PLAN	3'-5 11/16"
N4	4"	150# RFSO NOZZLE w/ RISER (TRANSFER)	PLAN	3'-5 11/16"
N5	4"	150# RFSO NOZZLE w/ RISER (TRANSFER)	PLAN	3'-5 11/16"
N6	4"	150# RFSO NOZZLE w/ RISER (TRANSFER)	PLAN	3'-5 11/16"
N7	4"	150# RFSO NOZZLE (SPARE)	0"	0"
N8	4"	150# RFSO NOZZLE w/ BLIND (FUTURE SPILLOVER)	0"	0"
N9	4"	150# RFSO NOZZLE w/ BLIND (SPARE)	PLAN	3'-5 11/16"
N10	4"	150# RFSO NOZZLE w/ BLIND (ANODE)	195'	0'-11 13/16"
N11	4"	150# RFSO NOZZLE (BLOWOFF TRUCK IN)	270'	3'-5 11/16"
N12	4"	150# RFSO NOZZLE	PLAN	3'-5 11/16"
N13	4"	150# RFSO NOZZLE (VENT)	CENTER	ROOF
N14	4"	150# RFSO NOZZLE w/ RISER (TRANSFER)	90'	3'-5 11/16"
N15	4"	150# RFSO NOZZLE w/ BLIND (ANODE)	195'	0'-11 13/16"
C1	4"	3000# FULL CPLG ON M1 COVER (STINGING TOOL)	290'	0'-0"
C2	1"	3000# FULL CPLG (LSL-8001)	325'	0'-0"
C3	1"	3000# FULL CPLG (TW/TI-8001)	245'	0'-4 3/4"
C4	1"	3000# FULL CPLG (TE/TW/TI-8000)	325'	0'-0"
CSA/G	1"	3000# FULL CPLG (SAMPLES)	150'	0'-4 5/8"
C6	1"	3000# FULL CPLG (LSH-8000)	325'	0'-0"
C7	1"	3000# FULL CPLG (LSL-8000)	325'	0'-0"
C8	1"	3000# FULL CPLG (TSHH/TW-8002)	225'	0'-0"
C9	1"	3000# FULL CPLG (SPARE)	PLAN	3'-2 1/4"
C10	4"	3000# FULL CPLG (CLEANOUT)	250'	0'-7 7/8"
T1	8"	API FLANGED THEEF HATCH CONNECTION	315'	ROOF
M1	24"	24" x 36" STD API MANWAY	290'	1'-10"
LL1/2	-	STANDARD LIFTING LUGS	-	2'-0"
TL	-	STANDARD TAILING LUG	335'	0'-0"
TS	-	(4) STANDARD TRANSPORTATION SUPPORTS	-	-
F1	-	10" FIRE TUBE w/ STACK	225'	0'-0"

BILL OF MATERIALS			
TAG	QTY.	DESCRIPTION	MATERIAL
1	1	FLOOR PLATE - 1/4" THK. x 15'-7" OD.	A38
2	3	SHELL PLATE - 3/16" THK. x 98" WD x 47'-11 3/8" LG	A38
3	1	CONICAL ROOF - 3/16" THK. CUT TO 92 3/4" RADIUS	A38
4	1	8" THEEF HATCH Box PRES. 0.4oz W/C	A38
5	23	4" 150# RFSO FLANGE	A105N
6	1	4" SCH 40 SMLS PIPE	A108-B
7	1	3" 150# RFSO FLANGE	A105N
8	1	3" SCH 40 SMLS PIPE	A108-B
13	2	4" 3000# FULL COUPLING	A105N
14	14	1" 3000# FULL COUPLING	A105N
15	1	STD. 24" x 36" MANWAY	A38

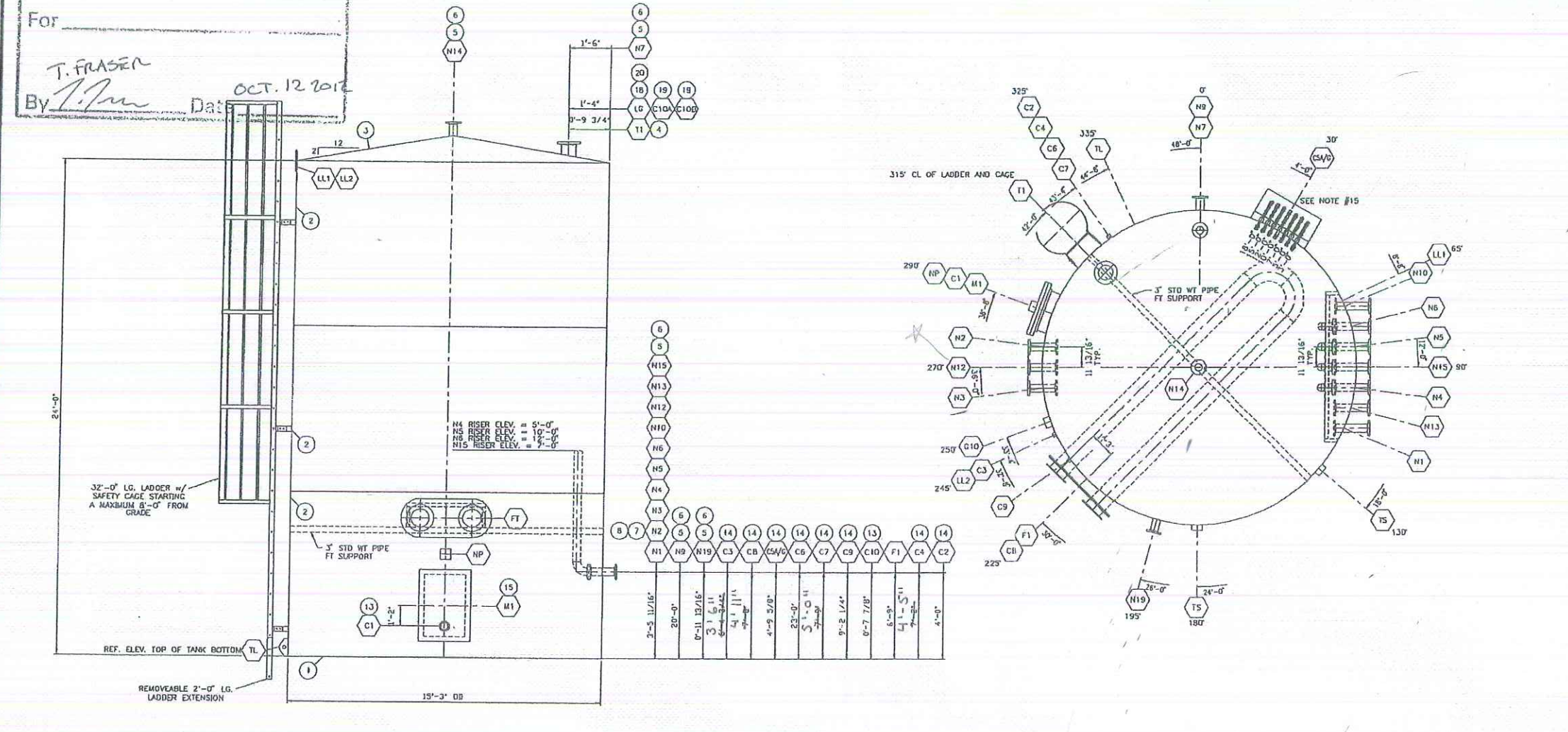
COATING SPECIFICATIONS	
STRUCTURAL:	SSPC SP7 BRUSH BLAST (1) COAT BLACK ENAMEL
O/S OF SHELL:	SSPC SP7 BRUSH BLAST 1 1/2" URETHANE INSULATION w/ BLACK SEALER
O/S OF ROOF:	SSPC SP7 BRUSH BLAST 1 1/2" URETHANE INSULATION w/ BLACK SEALER
O/S OF NOZZLES:	SSPC SP7 BRUSH BLAST (1) COAT BLACK ENAMEL
I/S OF BOTTOM:	SSPC SP5 WHITE METAL BLAST 12-15 MILS DFT DEVCO DEVCHEM T80
I/S OF SHELL:	SSPC SP5 WHITE METAL BLAST 12-15 MILS DFT DEVCO DEVCHEM T80
I/S OF NOZZLES:	SSPC SP5 WHITE METAL BLAST 12-15 MILS DFT DEVCO DEVCHEM T80

**CORSAIR DESIGN FOR APPROVAL**

Approved  as drawn  as noted

For \_\_\_\_\_


By T. FRASER Date OCT. 12 2017



DESIGN DATA	
TESTING:	AIR SOAP FILM LEAK TEST TO 24 OZ
WIND LOAD:	N/A
SEISMIC LOAD:	N/A
FOUNDATION:	BY OTHERS
IMPACT TESTING:	N/A
RADIOGRAPHY:	N/A
CORROSION ALLOWANCE:	NIL
SPECIFIC GRAVITY:	0.6 - 1.0
OPERATING PRESSURE:	ATMOSPHERIC
DESIGN VACUUM:	0.4 oz.
DESIGN INTERNAL PRESSURE:	16 oz.
DESIGN TEMPERATURE:	-13° TO 93° C
DESIGN CODE:	API 12F MODIFIED
STUDS AND NUTS:	A193 GR. B7 / A194 GR. 2H
BOLTING:	GRADE 2
NOZZLE EXTERNAL PROJECTION:	0'-0"
NOZZLE INTERNAL PROJECTION:	0'-6"
GASKET MATERIAL:	316 SS
WEIGHT FULL OF WATER:	289045#
EMPTY WEIGHT:	16500#
SERVICE:	WATER / OIL STORAGE TANK
CAPACITY:	750 BBL

- NOTES:**
- THIS TANK HAS NOT BEEN DESIGNED TO MEET THE EMERGENCY VENTING REQUIREMENTS OF API-2000.
  - FLANGE BOLT HOLES TO STRADDLE PRINCIPAL CENTER LINES.
  - LIFTING LUGS ARE FOR LIFTING EMPTY TANK ONLY.
  - ALL NOZZLE PROJECTIONS ARE MEASURED ALONG NOZZLE CL.
  - ALL FLANGES ARE TO BE IN ACCORDANCE WITH ANSI B16.5.
  - MTRS ARE REQUIRED FOR STEEL PLATE, PIPING, AND FLANGES.
  - SHIPPING IS TO BE ARRANGED AND PROVIDED BY OTHERS.
  - ALL OPENINGS SHALL BE BLANKED WITH TEMPORARY SHIPPING COVERS.
  - MANWAY TO HAVE 1/2" MINIMUM SHORT SIDE INTERNAL PROJECTION.
  - ALL FABRICATION TOLERANCES AS PER API 650.
  - INSIDE EDGES OF NOZZLE NECKS, INSPECTION OPENINGS, AND MANWAYS SHALL BE ROUNDED TO A RADIUS OF 1/4" MIN. OR ONE HALF THE PIPE WALL THICKNESS IF THE PIPE IS LESS 1/2" THICK.
  - EXTERNAL OF SHELL AND ROOF TO RECEIVE 1 1/2" SPRAY ON URETHANE INSULATION w/ BLACK ELASTOMERIC SEALER.
  - PROCESS SIZING AND CHECKS BY OTHERS.
  - SHELL, ROOF, AND BOTTOM WELDS ARE TO BE 3/16" OR 1/4", TO SUIT THE THINNER OF THE MATERIALS BEING JOINED TOG.
  - SAMPLE VALVES TO BE FULLY ENCLOSED IN ELECTRICALLY HEAT TRACED AND INSULATED SAMPLE BOX w/ SUMP AND DRAIN VALVE.

NO.	REVISION	DATE	BY	APR
O	ISSUED FOR CONSTRUCTION	12/02/17	TF	
A	ISSUED FOR APPROVAL	12/05/17	TF	



**GENERAL ARRANGEMENT**  
15'-3" DIA. x 24'-0" HIGH  
750BBL BLOW-OFF TANK S-800

JOB NO. \_\_\_\_\_

DRAWING NO. TERVITA-750-BQ0 REV. 0