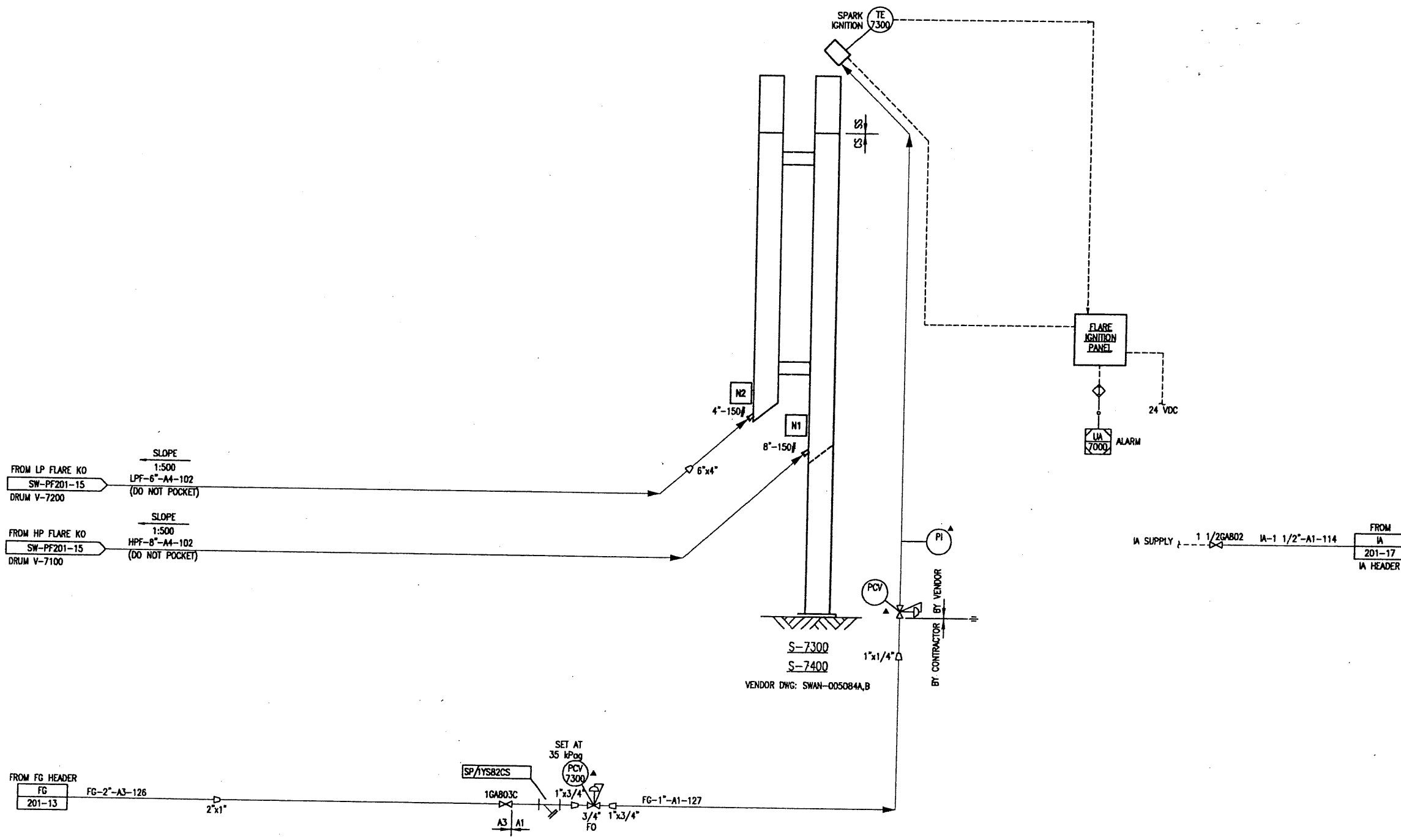


S-7300
H.P. FLARE STACK
SIZE: 324mm OD x 18288mm LG
PIPING TRIM SPEC.: A4

S-7400
L.P. FLARE STACK
SIZE: 114.3 OD x 18288 mm LG
PIPING TRIM SPEC.: A4



THIS DRAWING HAS BEEN CREATED FROM PREVIOUSLY ISSUED DWG SW-PF201-13

NOTES:

NUMBER	TITLE	REFERENCE DRAWINGS
NO	REVISION	BY DATE CKD APP

PERMIT STAMP

ENGINEER'S STAMP

DPH FOCUS			
DRAWN	CHECKED	APPROVED DSGN. ENG.	APPROVED PROJ. ENG.
BY CWM	[Signature]	[Signature]	[Signature]
DATE 07.09.07	08.11.21	17.10.18	17.10.18
DPH PROJECT No. 8703	DWG. SIZE A1 (594x841)		

SWAN HILLS SYN FUELS		
SWAN HILLS ISCG PRODUCTION FACILITY PIPING & INSTRUMENTATION DIAGRAM S-7300/7400 - H.P./L.P. FLARE STACKS		
SCALE NTS	DRAWING NUMBER SW-PF201-16	REV 0

November 17, 2009 11:46:44 a.m.
 Drawing: D:\PCAD\SYSTEMA\9703\PIPING\FLOW\PRODUCTION\SW-PF201-16.DWG TAG NAME MODEL
 Xref: emp-swtm2.dwg emp-param2.dwg