

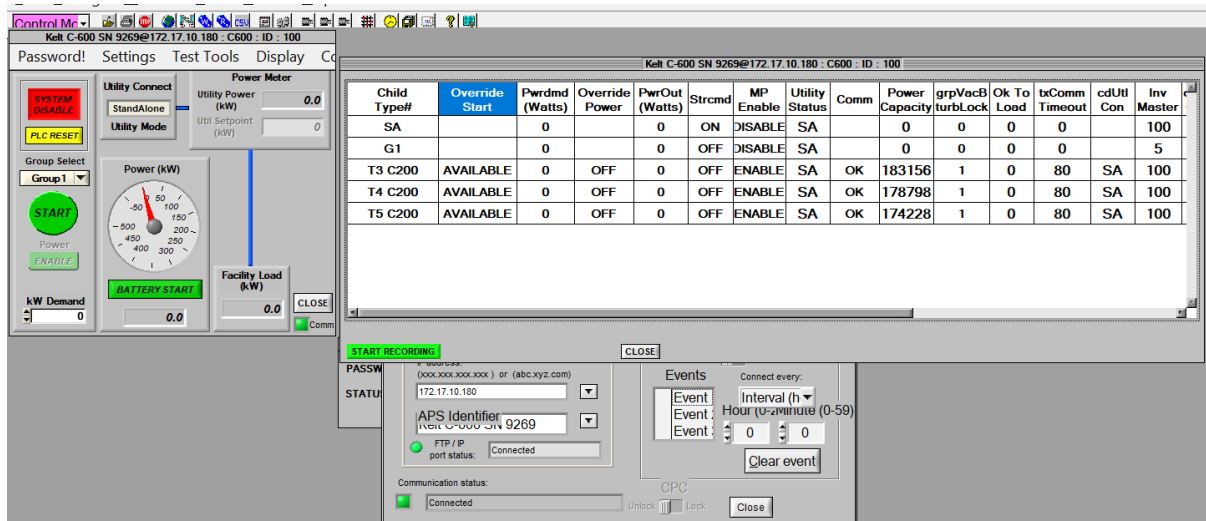
Bay C

MicroTurbine Data 1										System: 9269 C									
No	Parameter (Units)	Value	Record	No	Parameter (Units)	Value	Record	No	Parameter (Units)	Value	Record	No	Parameter (Units)	Value	Record	No	Parameter (Units)	Value	Record
1	Control Date	4/19/202	ON	28	Power Demand (W)	112225	ON	55	Bat Avg Current (A)	-0.1	ON	82	Inv Quadrature Curr (A)	3.5	ON				
2	Control Time	13:57:54	ON	29	Power Supply Voltage (V)	25.2	ON	56	Bat Volts (Vdc)	316	ON	83	Output Frequency (Hz)	60.0	ON				
3	Engine Speed (rpm)	55260	ON	30	Start Command (0/1)	1	ON	57	BC DC Bus (V)	756	ON	84	Output Phase A Mag (V)	390	ON				
4	Main Gen Power (W)	121200	ON	31	RFC Command	0	ON	58	Bat Avg Power (W)	-5	ON	85	Output Phase B Mag (V)	391	ON				
5	TET#1 (°F)	1171.9	ON	32	RFC Control Mode	0	ON	59	Bat KWH (kWh)	1534	ON	86	Output Phase C Mag (V)	391	ON				
6	TET#2 (°F)	1171.0	ON	33	Fuel Inlet P LP (psig)	0.0	ON	60	Battery State	4	ON	87	Output Current Phase A (A)	135.0	ON				
7	Turbine Exit Temp (°F)	1171.4	ON	34	Fuel Outlet P LP (psig)	0.0	ON	61	Charge Type	0	ON	88	Output Current Phase B (A)	135.0	ON				
8	Compressor In Temp (°F)	71.8	ON	35	RFC Temp (°F)	0.0	ON	62	Bat Chrg Phase No.	0	ON	89	Output Current Phase C (A)	137.0	ON				
9	Valve Position Feedback %	0	ON	36	RFC Speed (rpm)	0	ON	63	Bat Chrg Cur Dmd (A)	0	ON	90	Output Current Neutral (A)	2.1	ON				
10	AFR	0	ON	37	RFC Current FB (A)	0.0	ON	64	Bat Charging Volt Dmd (V)	339	ON	91	Output Voltage Phase A (V)	276.0	ON				
11	Wair (pph)	2880	ON	38	RFC Injector State	0	ON	65	Inv DC Bus Volts (Vdc)	760.3	ON	92	Output Voltage Phase B (V)	276.8	ON				
12	Ambient Pressure (psia)	12.2	ON	39	Fuel Valve Command (%)	56.6	ON	66	Inv Direct Curr (A)	192.2	ON	93	Output Voltage Phase C (V)	277.0	ON				
13	Wenergy (btu/sec)	436.1	ON	40	Fuel Inlet Pres (psig)	78.7	ON	67	LFC Pump PWM (%)	0.0	ON	94	Output Power Phase A (W)	37458	ON				
14	Incident Record	0	ON	41	Fuel Valve Inj State	5.0	ON	68	AA Pressure (psig)	0.0	ON	95	Output Power Phase B (W)	37540	ON				
15	Combustor Starts	141	ON	42	Fuel Valve Temp (°F)	78.8	ON	69	LFC Injector State	0.0	ON	96	Output Power Phase C (W)	38002	ON				
16	Starts	127	ON	43	Fuel Valve Ex P (psig)	0.0	ON	70	LFC Pressure Command (psi)	0	ON	97	Output Power (W)	113340	ON				
17	TET Setpoint (°F)	1171.0	ON	44	Bat Therm.Temp (°F)	55.4	ON	71	LFC Pressure Feedback (psi)	0	ON	98	Inv Heat Sink Temp (°F)	96.8	ON				
18	Hours	1991:09	ON	45	Bat PM Temp (°F)	32.0	ON	72	System Prime Status	0	ON	99	Output Current Limit (A)	438	ON				
19	Combustor Time	1983:43	ON	46	BC Heatsink T (°F)	80.6	ON	73	LFC Prime	0	ON	100	Gen Direct Current (A)	3.5	ON				
20	System Severity Level	0	ON	47	BC Board T (°F)	71.6	ON	74	Boost Pump	0	ON	101	Gen Quad Current (A)	-212.7	ON				
21	System State	0x2007	ON	48	Bat SOC (%)	79.4	ON	75	LFC Prime state	0	ON	102	Gen Direct Voltage (V)	65.9	ON				
22	Sys Config/Eng State	0x0000	ON	49	Bat Base SOC (%)	86.5	ON	76	Boost Pump Status	0	ON	103	Gen Quadrature Voltage (V)	359.5	ON				
23	Power Enable	1	ON	50	Bat Ideal SOC (%)	86.9	ON	77	Drain Pump Status	0	ON	104	Gen Speed Cmdnd (rpm)	55284.0	ON				
24	RFC Power (W)	0.0	ON	51	Bat Last SOC (%)	0.4	ON	78	Prime Sol. Status	0	ON	105	Brake Voltage Cmdnd (V)	784.9	ON				
25	Discrete Outputs	0xec60	ON	52	Bat Leg A (A)	0.0	ON	79	RFC DC Bus (V)	0	ON	106	Gen Current Feedback (A)	0.0	ON				
26	Discrete Inputs	0x1b01	ON	53	Bat Leg B (A)	-0.1	ON	80	LFC Pump Speed (%rpm)	0	ON	107	Gen Current Limit (A)	455.6	ON				
27	Main Board Temp (°F)	68.1	ON	54	Bat Leg C (A)	-0.1	ON	81	---	0	ON	108	Gen Heat Sink Temp (°F)	105.8	ON				

Bay D

MicroTurbine Data 1										System: 9269 D									
No	Parameter (Units)	Value	Record	No	Parameter (Units)	Value	Record	No	Parameter (Units)	Value	Record	No	Parameter (Units)	Value	Record	No	Parameter (Units)	Value	Record
1	Control Date	4/19/202	ON	28	Power Demand (W)	113214	ON	55	Bat Avg Current (A)	1.2	ON	82	Inv Quadrature Curr (A)	2.6	ON				
2	Control Time	13:25:03	ON	29	Power Supply Voltage (V)	25.0	ON	56	Bat Volts (Vdc)	349	ON	83	Output Frequency (Hz)	60.0	ON				
3	Engine Speed (rpm)	55406	ON	30	Start Command (0/1)	1	ON	57	BC DC Bus (V)	758	ON	84	Output Phase A Mag (V)	391	ON				
4	Main Gen Power (W)	122619	ON	31	RFC Command	0	ON	58	Bat Avg Power (W)	542	ON	85	Output Phase B Mag (V)	391	ON				
5	TET#1 (°F)	1164.0	ON	32	RFC Control Mode	0	ON	59	Bat KWH (kWh)	1141	ON	86	Output Phase C Mag (V)	390	ON				
6	TET#2 (°F)	1163.5	ON	33	Fuel Inlet P LP (psig)	0.0	ON	60	Battery State	6	ON	87	Output Current Phase A (A)	136.0	ON				
7	Turbine Exit Temp (°F)	1163.8	ON	34	Fuel Outlet P LP (psig)	0.0	ON	61	Charge Type	5	ON	88	Output Current Phase B (A)	134.0	ON				
8	Compressor In Temp (°F)	68.8	ON	35	RFC Temp (°F)	0.0	ON	62	Bat Chrg Phase No.	2	ON	89	Output Current Phase C (A)	136.0	ON				
9	Valve Position Feedback %	0	ON	36	RFC Speed (rpm)	0	ON	63	Bat Chrg Cur Dmd (A)	2	ON	90	Output Current Neutral (A)	1.8	ON				
10	AFR	0	ON	37	RFC Current FB (A)	0.0	ON	64	Bat Charging Volt Dmd (V)	360	ON	91	Output Voltage Phase A (V)	276.9	ON				
11	Wair (pph)	2909	ON	38	RFC Injector State	0	ON	65	Inv DC Bus Volts (Vdc)	760.3	ON	92	Output Voltage Phase B (V)	276.7	ON				
12	Ambient Pressure (psia)	12.2	ON	39	Fuel Valve Command (%)	53.9	ON	66	Inv Direct Curr (A)	191.3	ON	93	Output Voltage Phase C (V)	277.1	ON				
13	Wenergy (btu/sec)	526.2	ON	40	Fuel Inlet Pres (psig)	84.2	ON	67	LFC Pump PWM (%)	0.0	ON	94	Output Power Phase A (W)	37639	ON				
14	Incident Record	0	ON	41	Fuel Valve Inj State	5.0	ON	68	AA Pressure (psig)	0.0	ON	95	Output Power Phase B (W)	37282	ON				
15	Combustor Starts	144	ON	42	Fuel Valve Temp (°F)	104.0	ON	69	LFC Injector State	0.0	ON	96	Output Power Phase C (W)	38029	ON				
16	Starts	124	ON	43	Fuel Valve Ex P (psig)	0.0	ON	70	LFC Pressure Command (psi)	0	ON	97	Output Power (W)	113209	ON				
17	TET Setpoint (°F)	1164.0	ON	44	Bat Therm.Temp (°F)	55.4	ON	71	LFC Pressure Feedback (psi)	0	ON	98	Inv Heat Sink Temp (°F)	96.8	ON				
18	Hours	2089:14	ON	45	Bat PM Temp (°F)	32.0	ON	72	System Prime Status	0	ON	99	Output Current Limit (A)	438	ON				
19	Combustor Time	2082:20	ON	46	BC Heatsink T (°F)	80.6	ON	73	LFC Prime	0	ON	100	Gen Direct Current (A)	-5.3	ON				
20	System Severity Level	0	ON	47	BC Board T (°F)	71.6	ON	74	Boost Pump	0	ON	101	Gen Quad Current (A)	-215.3	ON				
21	System State	0x2007	ON	48	Bat SOC (%)	75.1	ON	75	LFC Prime state	0	ON	102	Gen Direct Voltage (V)	68.6	ON				
22	Sys Config/Eng State	0x0000	ON	49	Bat Base SOC (%)	82.2	ON	76	Boost Pump Status	0	ON	103	Gen Quadrature Voltage (V)	357.7	ON				
23	Power Enable	1	ON	50	Bat Ideal SOC (%)	82.2	ON	77	Drain Pump Status	0	ON	104	Gen Speed Cmdnd (rpm)	55410.0	ON				
24	RFC Power (W)	0.0	ON	51	Bat Last SOC (%)	0.0	ON	78	Prime Sol. Status	0	ON	105	Brake Voltage Cmdnd (V)	784.9	ON				
25	Discrete Outputs	0xec60	ON	52	Bat Leg A (A)	-0.0	ON	79	RFC DC Bus (V)	0	ON	106	Gen Current Feedback (A)	0.0	ON				
26	Discrete Inputs	0x1b01	ON	53	Bat Leg B (A)	0.6	ON	80	LFC Pump Speed (%rpm)	0	ON	107	Gen Current Limit (A)	455.6	ON				
27	Main Board Temp (°F)	70.5	ON	54	Bat Leg C (A)	0.6	ON	81	---	0	ON	108	Gen Heat Sink Temp (°F)	107.6	ON				

Controller



Conclusion

All three bays, and the Controller passed the inspections and load tests with no immediate concerns regarding the long-term operation or reliability of the system. That said it is imperative that these systems receive the suggested maintenance at the suggested intervals to ensure proper operation and uptime.