

GMV SERIES

-MOVING GELATIN MELTING TANK



Moving Gelatin Melting Tank



Gel Melter Specifications

- Jacket Heating
- Material Temperature: Sensor for measuring temperature of material inside tank
- Mixing Motor: Right Angle Gear motor
- Mixing Motor: Variable Speed with panel mounted dial
- Vacuum Pump
- Vacuum Water Supply A: On board tank with sight glass & drain port
- Vacuum Water Supply B: External water in/out ports (tri-clover, panel mounted)
- Vacuum Water Supply: Have inlet solenoid valve & flow control regulator
- High Quality Vacuum Gage: Oil filled
- Lid Lift Mechanism: Pneumatic lift cylinder with panel mount up/down buttons & regulator
- High Quality Panel Hinge
- High Quality Surface Finishes on Tank and Welds
- Tank Material: 316 for all product contact surfaces

GEL MELTER



GMV-100

GMV-150

GMV-200

GMV-300



GEL MELTER

 **SaintyCo**
— Pharma Process & Packaging

GMV Series Gel Melter



Figure 1: Panel Layout with Motor Speed Control/Lid Up & Down/ Material Temperature

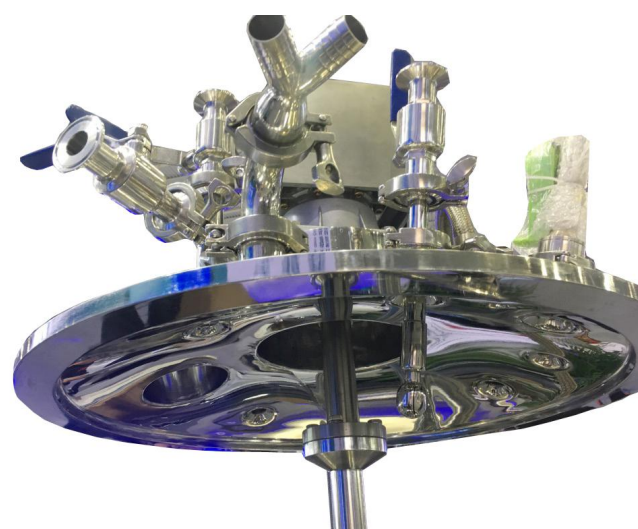


Figure 2: Tank Finish with brush finish on lower portion and mirror finish above



Figure 3: Sheet metal quality finish

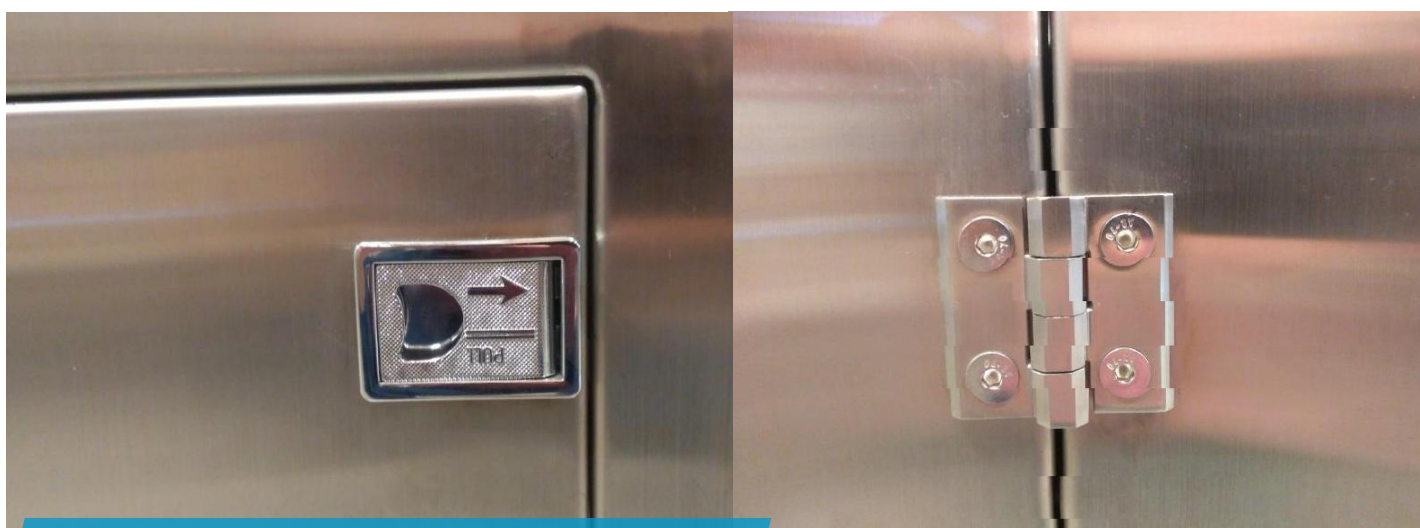
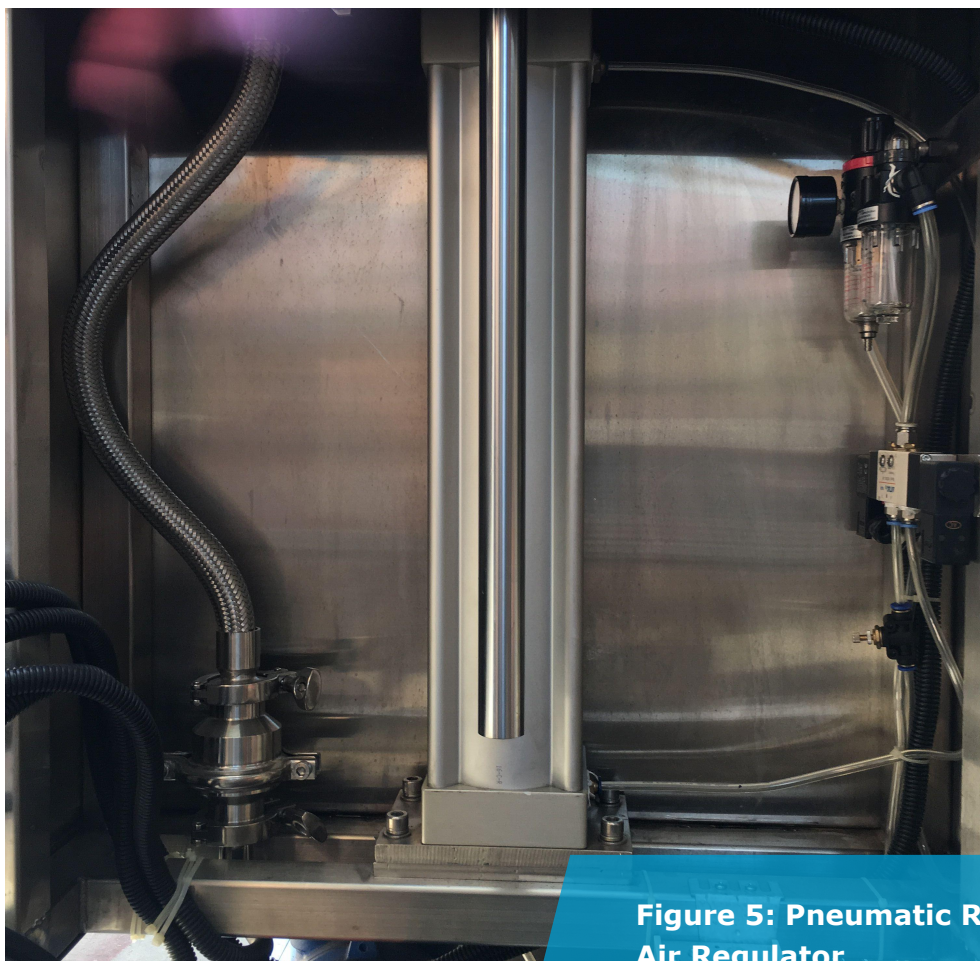


Figure 4: Panel Latch



**Figure 5: Pneumatic Ram for Lid Raise/
Air Regulator**

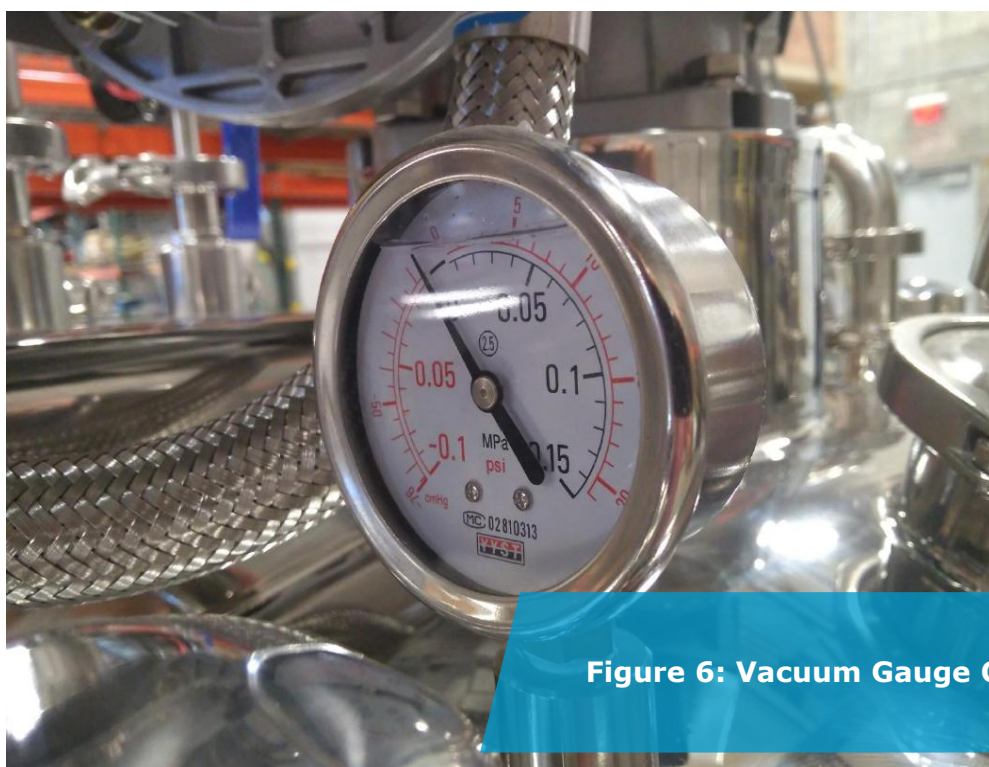


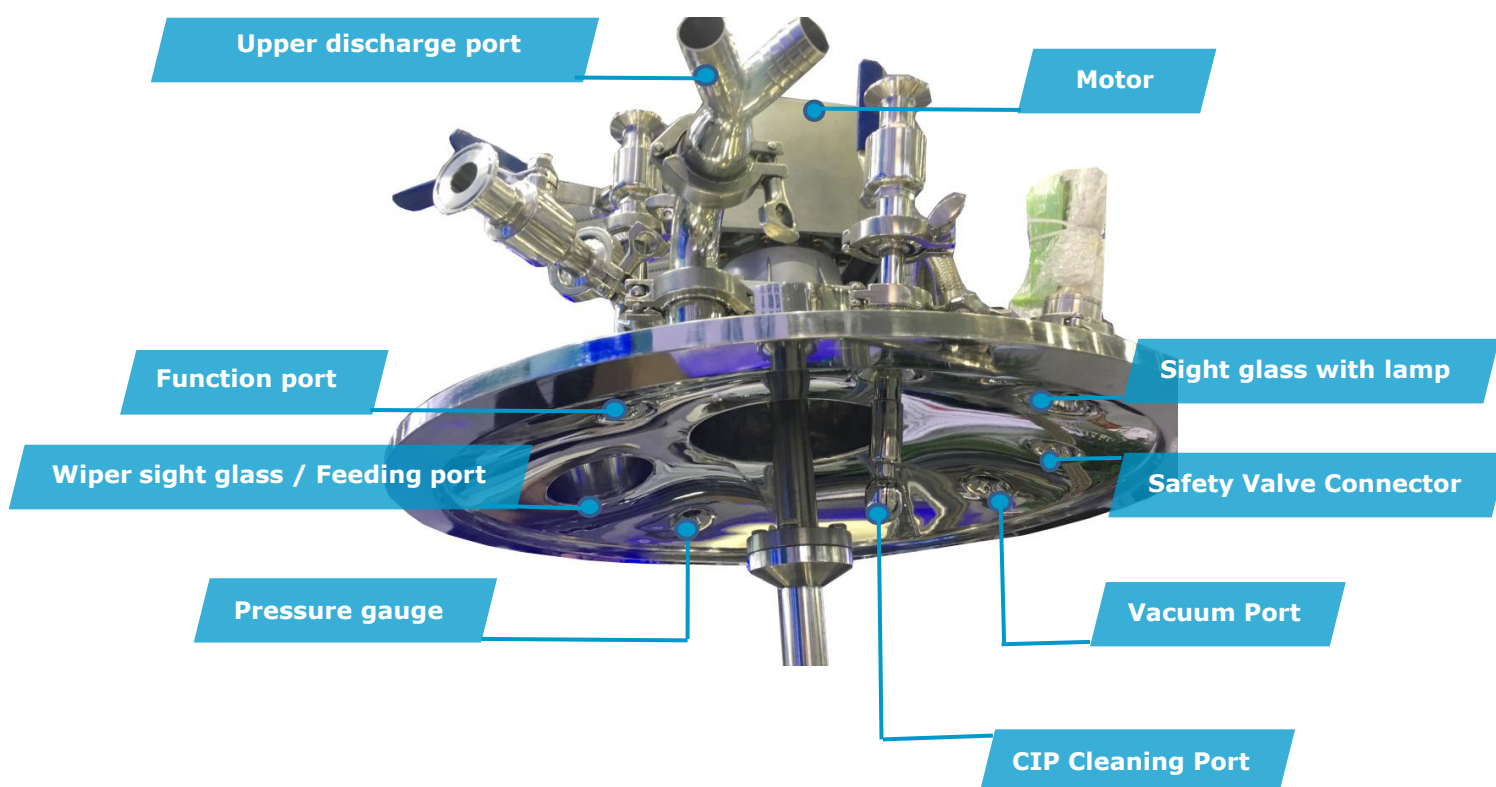
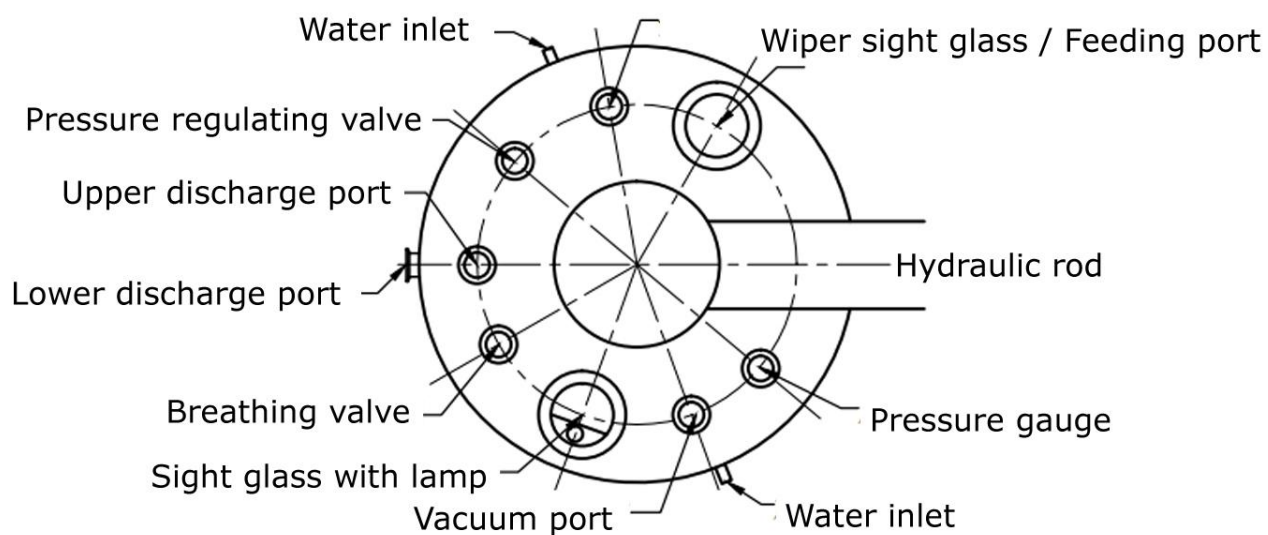
Figure 6: Vacuum Gauge Oil filled

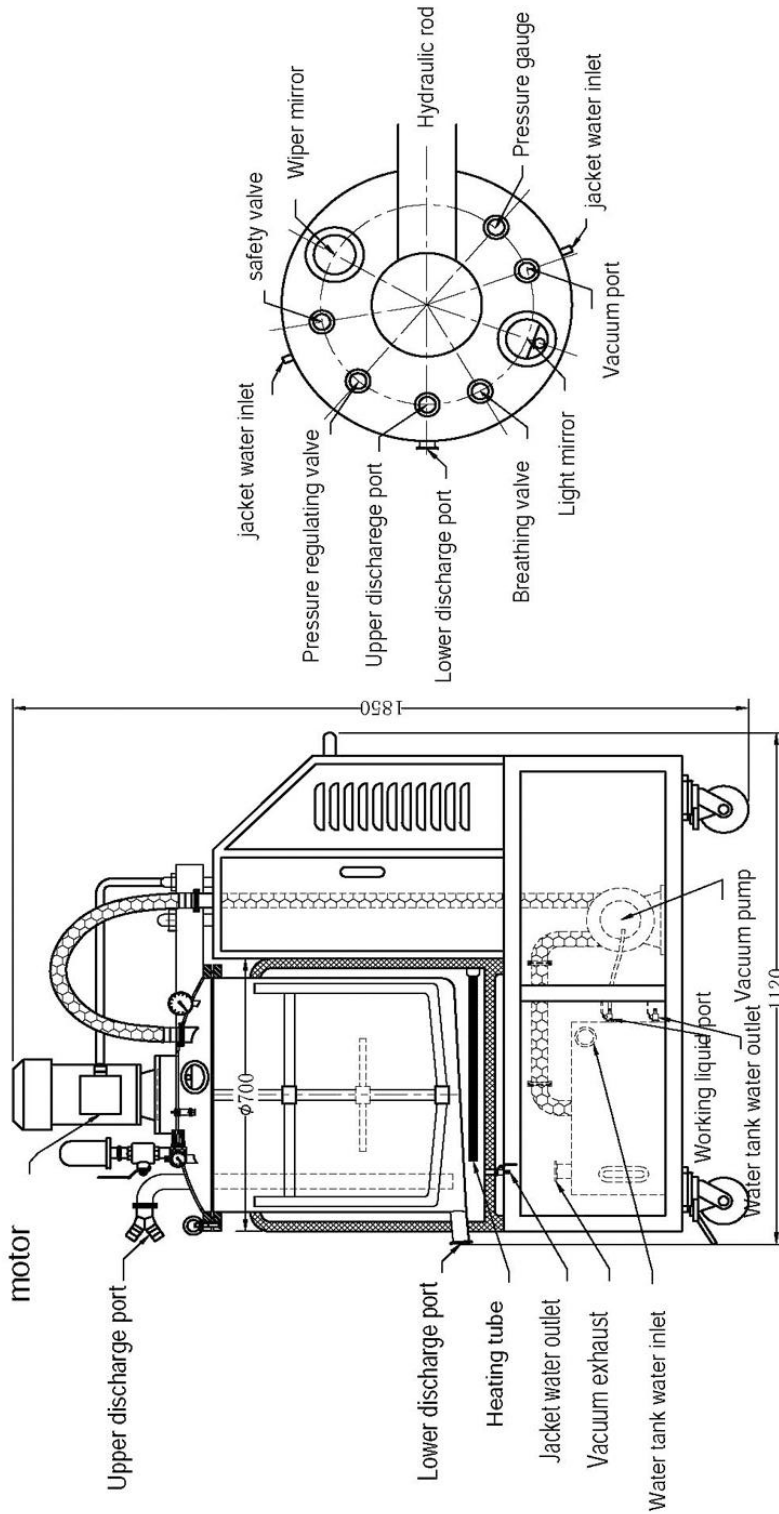


Figure 7: Water Inlet Solenoid Valve & Flow Control



Figure 8: Vacuum Pump Assembly

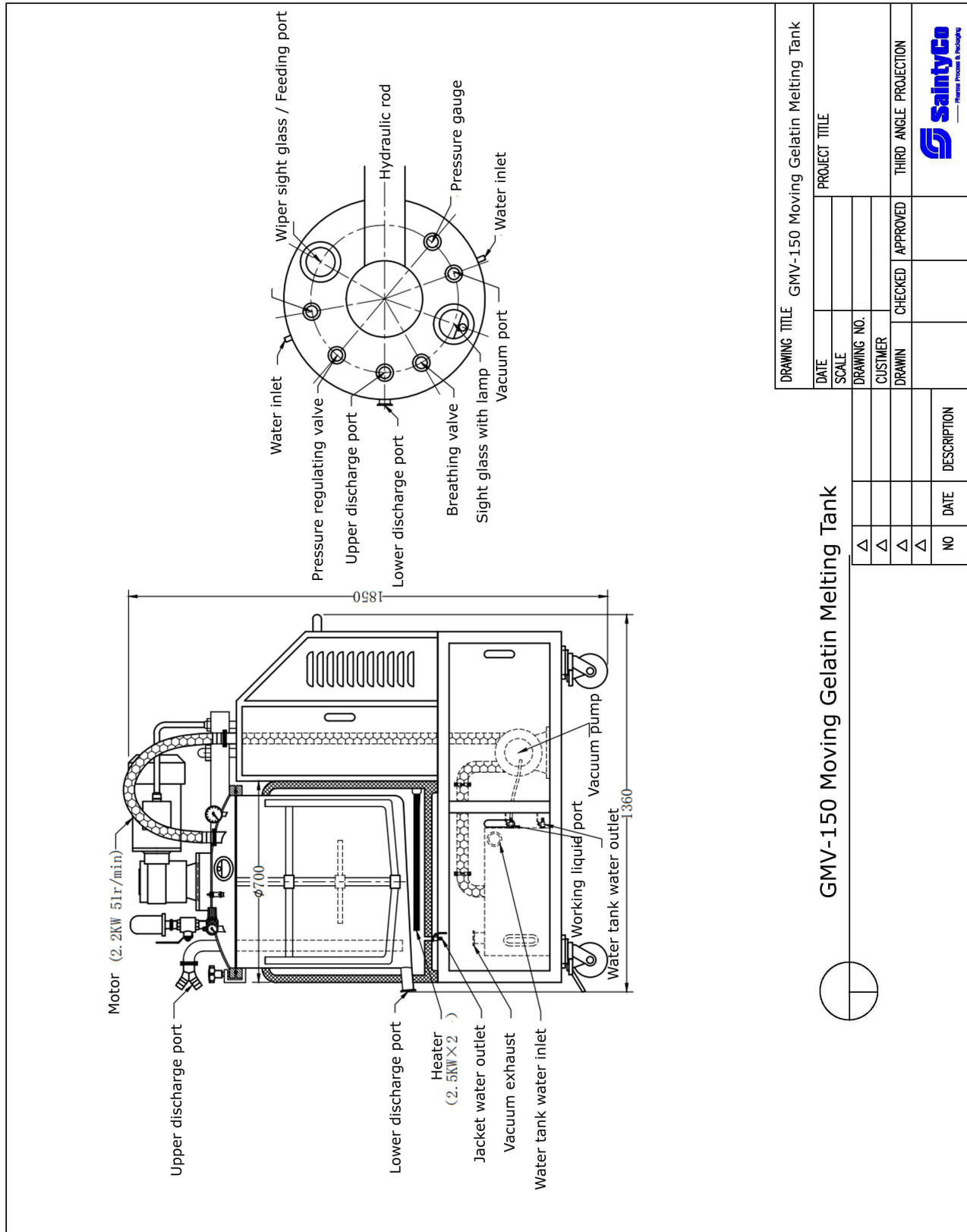





GMV-100 Gelatin Melting Tank

DRAWING TITLE		GMV-100 Gelatin Melting Tank	
DATE	2019.03.22	PROJECT TITLE	
SCALE			
DRAWING NO.			
CUSTOMER			
DRAWN	CHECKED	APPROVED	THIRD ANGLE PROJECTION





DRAWING TITLE GMV-150 Moving Gelatin Melting Tank

DATE	PROJECT TITLE
SCALE	
DRAWING NO.	
CUSTOMER	
DRAWN	CHECKED APPROVED
	THIRD ANGLE PROJECTION
	

GMV-150 Moving Gelatin Melting Tank



NO	DATE	DESCRIPTION
Δ		
Δ		
Δ		
Δ		

SaintyCo also offer:

Softgel Manufacturing Line

Capsule Printer

Capsule Counting Line

Cartoning Systems

Blister Packing Solutions

