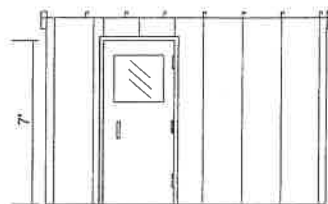
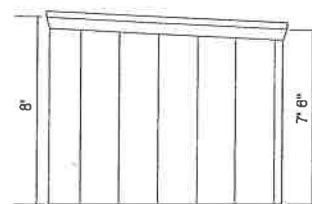


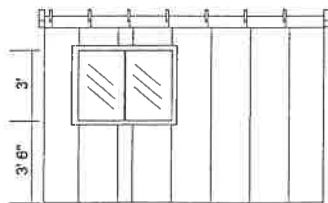
PLAN VIEW



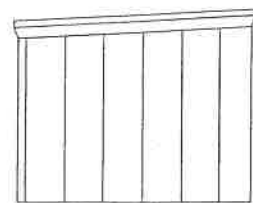
SOUTH ELEVATION



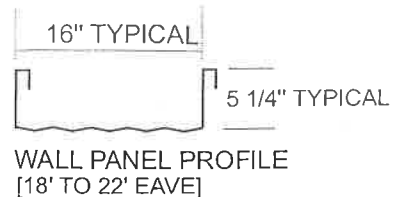
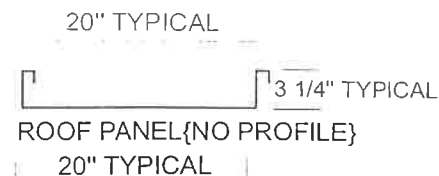
EAST ELEVATION



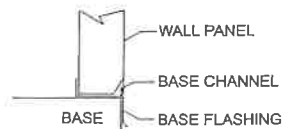
NORTH ELEVATION



WEST ELEVATION



WALL AND ROOF PANELS 22 GA.



BASE DETAIL {TYPICAL}

**BUILDINGS SPECIFICATIONS
GENERAL NOTES**

NOTES WHICH ARE APPLICABLE TO THIS JOB WHEN SHADED
SUBNOTES WHICH ARE APPLICABLE WHEN SHADED

- 1 TYPE OF BUILDING
 - SELF FRAMING - SHED SELF FRAMING-GABLE RIGID FRAME GABLE
- LOCATION VARIOUS LOCATIONS
- 2 MATERIAL - WALL AND ROOF PANELS
 - GALVANIZED - 22 GAUGE ALUMINUM - 18 GAUGE
 - PRE-PAINTED GALVANIZED - 22 GAUGE GALVALUME - 22 GAUGE
 - COLOR: WALLS _____ ROOF _____
 - DOORS _____ TRIM _____
- 3 ROOF SLOPE
 - 1:20 2:12 3:12 4:12
- 4 INSULATION - FIRREGLAS
 - WALLS R-12 R-20 OTHER _____
 - ROOF R-12 R-20 R-32 OTHER _____
- 5 LINING
 - 24 GA. FLUTED ALUMINUM 20 GA. PERFORATED ALUMINUM PAINTED WHITE
- 6 POLYETHYLENE VAPOR BARRIER
 - 2 MIL 4 MIL 6 MIL
- 7 DOORS
 - 3' X 7' WS WGW PH LS DC CC CP TH SW TS
 - 1829 X 2134 WS WGW PH LS DC CC CP TH SW TS
 - WS - WEATHERSTRIPPING DC - DOOR CLOSURE PH - PANIC HARDWARE
 - LS - LOCKSET CC - CHECK CHAIN WGW - WIREGLAZED WINDOW
 - TH - THRESHOLD SW - DOOR SWEEP CP - CANOPY
 - TS - REMOVABLE TRANSOM PANEL
- 8 WINDOWS - DOUBLE GLAZED HORIZONTAL SLIDING C/W BUG SCREEN
 - NO. 1 SIZE 48" X 36"
- 9 WALL LOUVERS FIELD LOCATED
- 10 12" X 12" STAMPED LOUVER C/W SLIDE CLOSURE AND BUG SCREEN
 - BACKDRAFT DAMPER C/W SCREENED HOOD
- 11 RIDGE VENTILATOR C/W CHAIN OPERATED CONTROLS AND BIRD SCREEN
 - THROAT 204 LENGTH _____
- 12 ROLL-UP DOORS / SECTIONAL O/H DOORS / SLIDING
 - STEEL ROLL-UP MANUAL
 - STEEL SECTIONAL O/H CHAIN OPERATED
 - SLIDING INSULATED
- 13 FANS - ROOF / WALL
 - ROOF AIR CHANGES / HOUR _____ GENERAL PURPOSE
 - WALL AIR CHANGES / HOUR _____ EXPLOSION PROOF
- 14 EAVESTROUGH, DOWNSPOUT AND ICE RAKE
 - EAVESTROUGH DOWNSPOUT ICE RAKE DORMER



DESIGN LOADS - UNFACTORED
SNOW - 1.86 KPa
WIND - 0.32 KPa

Feb 5/04

This drawing is owned by K&T Metal Industries Ltd. It is loaned to the receiver who has agreed not to furnish information from it to others, or to make use of it that is, or may be injurious to K&T Metal Industries Ltd. and to return it upon request.

 K & T METAL INDUSTRIES LTD.
8802-95 STREET
MORINVILLE AB
T8R 1K6
PH. [780] 939-4486
FAX. [780] 939-2687

PROJECT
**APACHE CANADA LTD.
WELLSITE LINEHEATER BUILDINGS**

CLIENT
RUSHTON GAS & OIL EQUIPMENT LTD.

DATE	02/05/04	SCALE	1/4" = 1'	DRAWING NUMBER	REV.
DWN. BY	RF	CR'D BY	CH	116-4T	0