

TANK DATA SHEET

THIS DRAWING IS THE PROPERTY OF G.L.M. INDUSTRIES L.P. AND IS TO BE USED ONLY IN CONNECTION WITH WORK PERFORMED BY G.L.M. INDUSTRIES L.P. THE DRAWING IS NOT TO BE COPIED IN WHOLE OR IN PART AND MUST BE RETURNED UPON REQUEST.

PHYSICAL

DESCRIPTION	23'-6" O.D. x 32'-0" HIGH
NO. REQUIRED	01
CAPACITY (NOMINAL)	2500 BBL
SERVICE	PRODUCED WATER TANK
NOMINAL TANK WEIGHTS	
BARE	33,009 LBS.
DRESSED	37,612 LBS.
FULL OF WATER	913,612 LBS.
OPERATING	913,612 LBS.

DESIGN DATA

DESIGN CODES	API-650 (MODIFIED) 11TH EDITION
GLM GOOD INDUSTRY PRACTICES	
STAMP REQUIREMENTS	NONE
SPECIFICATIONS	N/A

MATERIALS

DESIGN INT. PRESS @ TEMP	16.0 psig @ 200°F
DESIGN EXT. PRESS @ TEMP	0.5 psig @ 200°F
MDMT	-20°F
SPECIFIC GRAVITY	1.0
JOINT EFFICIENCY	SHELL= 0.85 ROOF= N/A CONE= N/A
CORROSION ALLOWANCE	SHELL= NIL ROOF= NIL
BOTTOM= NIL NOZZLES= NIL PIPING= NIL	
ROOF LOADS	39 PSF (SNOW)
WIND LOADS	80 MPH
SEISMIC LOADS	NIL
FOUNDATION	UNKNOWN (BY OTHERS)

GENERAL NOTES

SHELL	G40.21-38W
ROOF	G40.21-38W
BOTTOM	N/A
CONE(S)	N/A
HEAD(S)	N/A
SUPPORT STRUCTURE	N/A
NOZZLE NECK	SA-106-B
MANWAY	G40.21-38W
FLANGE	SA-105N
REINFORCING PADS	N/A
INT. PIPING	SA-53-B
FITTINGS	SA-234-WFB
COUPLINGS OR FORGINGS	SA-182-F304
BOLTING	GR. 2 OR 5
STUDS/NUTS	A-193-B7/A-194-2H
GASKETS (FLANGE)	304 S.S. w/ NON-ASB
GASKETS (MANWAY)	NEOPRENE
STRUCTURAL	G40.21-44W
OTHER	N/A

DESIGN NOTES

DESIGN INT. PRESS @ TEMP	16.0 psig @ 200°F
DESIGN EXT. PRESS @ TEMP	0.5 psig @ 200°F
MDMT	-20°F
SPECIFIC GRAVITY	1.0
JOINT EFFICIENCY	SHELL= 0.85 ROOF= N/A CONE= N/A
CORROSION ALLOWANCE	SHELL= NIL ROOF= NIL
BOTTOM= NIL NOZZLES= NIL PIPING= NIL	
ROOF LOADS	39 PSF (SNOW)
WIND LOADS	80 MPH
SEISMIC LOADS	NIL
FOUNDATION	UNKNOWN (BY OTHERS)

MATERIAL NOTES

SHELL	G40.21-38W
ROOF	G40.21-38W
BOTTOM	N/A
CONE(S)	N/A
HEAD(S)	N/A
SUPPORT STRUCTURE	N/A
NOZZLE NECK	SA-106-B
MANWAY	G40.21-38W
FLANGE	SA-105N
REINFORCING PADS	N/A
INT. PIPING	SA-53-B
FITTINGS	SA-234-WFB
COUPLINGS OR FORGINGS	SA-182-F304
BOLTING	GR. 2 OR 5
STUDS/NUTS	A-193-B7/A-194-2H
GASKETS (FLANGE)	304 S.S. w/ NON-ASB
GASKETS (MANWAY)	NEOPRENE
STRUCTURAL	G40.21-44W
OTHER	N/A

FABRICATION NOTES

DESCRIPTION	SWR # (INT. USE ONLY)
EXTERNAL PREPARATION AND COATING	
1. EXTERIOR OF SHELL AND ROOF TO RECEIVE:	
-(1) COAT OF SELF-PRIMING BLACK PAINT	
2. EXTERIOR OF BOTTOM TO RECEIVE:	
-NEAR WHITE METAL BLAST (SSPC SP10)	
-(2.0-4.0) MILS DFT OF CATHA-COAT 303H EPOXY PRIMER	
INTERNAL PREPARATION AND COATING	
1. INTERIOR OF SHELL, ROOF, AND BOTTOM TO RECEIVE:	
-WHITE METAL BLAST (SSPC SP5)	
-(16.0-20.0) MILS DFT OF DEWAT 100 EPOXY	
2. TANK INTERNALS TO RECEIVE:	
-NIL	
INSULATION	
-2" THK. ALL-PURPOSE URETHANE SPRAY-ON INSULATION	
c/w (1) COAT OF BLACK ELASTOMERIC SEALER	
SPECIAL	

PAINTING & COATING NOTES

DESCRIPTION	SWR # (INT. USE ONLY)
EXTERNAL PREPARATION AND COATING	
1. EXTERIOR OF SHELL AND ROOF TO RECEIVE:	
-(1) COAT OF SELF-PRIMING BLACK PAINT	
2. EXTERIOR OF BOTTOM TO RECEIVE:	
-NEAR WHITE METAL BLAST (SSPC SP10)	
-(2.0-4.0) MILS DFT OF CATHA-COAT 303H EPOXY PRIMER	
INTERNAL PREPARATION AND COATING	
1. INTERIOR OF SHELL, ROOF, AND BOTTOM TO RECEIVE:	
-WHITE METAL BLAST (SSPC SP5)	
-(16.0-20.0) MILS DFT OF DEWAT 100 EPOXY	
2. TANK INTERNALS TO RECEIVE:	
-NIL	
INSULATION	
-2" THK. ALL-PURPOSE URETHANE SPRAY-ON INSULATION	
c/w (1) COAT OF BLACK ELASTOMERIC SEALER	
SPECIAL	

Q.A. NOTES

DESCRIPTION	SWR # (INT. USE ONLY)
EXTERNAL PREPARATION AND COATING	
1. EXTERIOR OF SHELL AND ROOF TO RECEIVE:	
-(1) COAT OF SELF-PRIMING BLACK PAINT	
2. EXTERIOR OF BOTTOM TO RECEIVE:	
-NEAR WHITE METAL BLAST (SSPC SP10)	
-(2.0-4.0) MILS DFT OF CATHA-COAT 303H EPOXY PRIMER	
INTERNAL PREPARATION AND COATING	
1. INTERIOR OF SHELL, ROOF, AND BOTTOM TO RECEIVE:	
-WHITE METAL BLAST (SSPC SP5)	
-(16.0-20.0) MILS DFT OF DEWAT 100 EPOXY	
2. TANK INTERNALS TO RECEIVE:	
-NIL	
INSULATION	
-2" THK. ALL-PURPOSE URETHANE SPRAY-ON INSULATION	
c/w (1) COAT OF BLACK ELASTOMERIC SEALER	
SPECIAL	

SHIPPING NOTES

DESCRIPTION	SWR # (INT. USE ONLY)
EXTERNAL PREPARATION AND COATING	
1. EXTERIOR OF SHELL AND ROOF TO RECEIVE:	
-(1) COAT OF SELF-PRIMING BLACK PAINT	
2. EXTERIOR OF BOTTOM TO RECEIVE:	
-NEAR WHITE METAL BLAST (SSPC SP10)	
-(2.0-4.0) MILS DFT OF CATHA-COAT 303H EPOXY PRIMER	
INTERNAL PREPARATION AND COATING	
1. INTERIOR OF SHELL, ROOF, AND BOTTOM TO RECEIVE:	
-WHITE METAL BLAST (SSPC SP5)	
-(16.0-20.0) MILS DFT OF DEWAT 100 EPOXY	
2. TANK INTERNALS TO RECEIVE:	
-NIL	
INSULATION	
-2" THK. ALL-PURPOSE URETHANE SPRAY-ON INSULATION	
c/w (1) COAT OF BLACK ELASTOMERIC SEALER	
SPECIAL	

GENERAL NOTES

1. TANK DESIGNED IN NISKU, AB.
2. THESE DRAWINGS HAVE BEEN REVIEWED FOR COMPLIANCE WITH GOOD INDUSTRY PRACTICES REFERENCING API-650 AND THE APPLICABLE CONTRACT. PROCESS CONSIDERATIONS REMAIN THE RESPONSIBILITY OF THE USER OR THE USER'S DESIGNATED AGENT.
3. OH&S COMPLIANT LADDERS AND CAGES HAVE BEEN REQUESTED.

DESIGN NOTES

1. THIS TANK HAS BEEN DESIGNED FOR SIMULTANEOUS INTERNAL DESIGN PRESSURE AND WIND OVERTURNING.
2. VENTING IN ACCORDANCE WITH API-2000 HAS NOT BEEN REQUESTED AND IS NOT PROVIDED.
3. LIFTING AND TAILING LUGS ARE FOR LIFTING EMPTY TANKS ONLY.
4. THESE DRAWINGS ARE IN CONFORMANCE WITH DESIGN CALCULATIONS 11-040-1/3 REV. 0.
5. DESIGN IS BASED ON MINIMUM 3'-6" LIQUID LEVEL BEING MAINTAINED IN TANK AT ALL TIMES DURING OPERATION.

MATERIAL NOTES

1. MTR FILES FOR MAIN STEEL, PIPES AND FLANGES WILL BE ISSUED TO CUSTOMER FOR RECORDS UPON PROJECT COMPLETION.

FABRICATION NOTES

1. CUSTOMER APPROVED WELD PROCEDURES: EYES & NO.
2. ALL SHELL NOZZLES TO STRADDLE VERTICAL CENTERLINES.
3. ALL ROOF NOZZLES TO STRADDLE TANK MAJOR CENTERLINES UNLESS OTHERWISE SHOWN ON GENERAL ARRANGEMENT.
4. SHOP TRIAL FIT ALL APPURTENANCES PRIOR TO PAINTING OR COATING.

PAINTING & COATING NOTES

1. ALL INTERNAL INSPECTION TO OBTAIN THICKNESS READINGS AND RECORD SAME, ARE AS PER SSPC-PA2.
2. INTERNAL COATING HOLIDAY DETECTION TO BE CONDUCTED IN ACCORDANCE WITH NACE RPD 188-90.
3. FLANGE FACES MAY RECEIVE INTERNAL COATING BUT ARE EXCLUDED FROM SPECIFIC BLAST AND MILS DFT REQUIREMENTS.


Q.A. NOTES

1. INSPECTOR: N/A
- COMPANY: N/A
- PHONE: BUS. N/A
- CELL: N/A
- EMAIL: N/A
- INSPECTION DETAILS: N/A
2. TANK ROOF & SHELL SHALL RECEIVE AIR/SOAP LEAK TEST TO 2.875 IN. OF H2O.
3. TANK FLOOR SHALL RECEIVE VACUUM BOX LEAK TEST TO 3.0 PSIG.
4. TANK SHALL RECEIVE SPOT RADIOGRAPHY PER API-650.
5. FITTINGS N1, N4, N14 & C2, IN CIRCUMFERENTIAL SEAMS, SHALL RECEIVE 100% RADIOGRAPHY.


SHIPPING NOTES

1. OPEN CONNECTIONS SHALL BE BLANKED WITH TEMPORARY SHIPPING COVERS.

SHT. NO.	DESCRIPTION	REV. NO.	REVISION DATE	CONSTRUCTION RELEASE DATE
1	TANK DATA	1	05/16/11	04/20/11
2A	GENERAL ARRANGEMENT (ORIENT.)	1	05/16/11	04/20/11
2B	GENERAL ARRANGEMENT (ELEV.)	1	05/16/11	04/20/11
3	MISC. NOZZLE DETAILS	1	05/19/11	04/20/11
4	MISC. INTERNAL DETAILS	0	-	04/20/11
5	MISC. INTERNAL DETAILS	1	05/16/11	04/20/11
6	VAULT DETAILS	0	-	04/20/11
7	MANWAY DETAIL	0	-	04/20/11
8	PLATFORM DETAILS	0	-	04/20/11
50	S. R. & B DETAILS	0	-	01/28/11

		G.L.M. INDUSTRIES L.P.	
		API 650 ED. 11 ADD. APP. MOD. X	
SERIAL No. 11-040-1		YEAR 2011	
OWNER TAG NO. 1-900		SERVICE PRODUCED WATER TANK	
NOM DIA	23.5 FT	BTM THK	1/4 IN
NOM HT	32.0 FT	BTM TYPE	FLAT
NOM CAP	2500 BBL	ROOF THK	3/8 IN
DES. PRES.	16.0 PSIG	P.W.H.T	NO
DES. S.G.	1.0	DES. LIQ. LV.	32.0 FT
MDMT	-20 F	MAX TEMP	200 F
SHELL THICKNESS		MATERIAL	
1/4 IN.		G40.21-38W	
3/16 IN.		G40.21-38W	

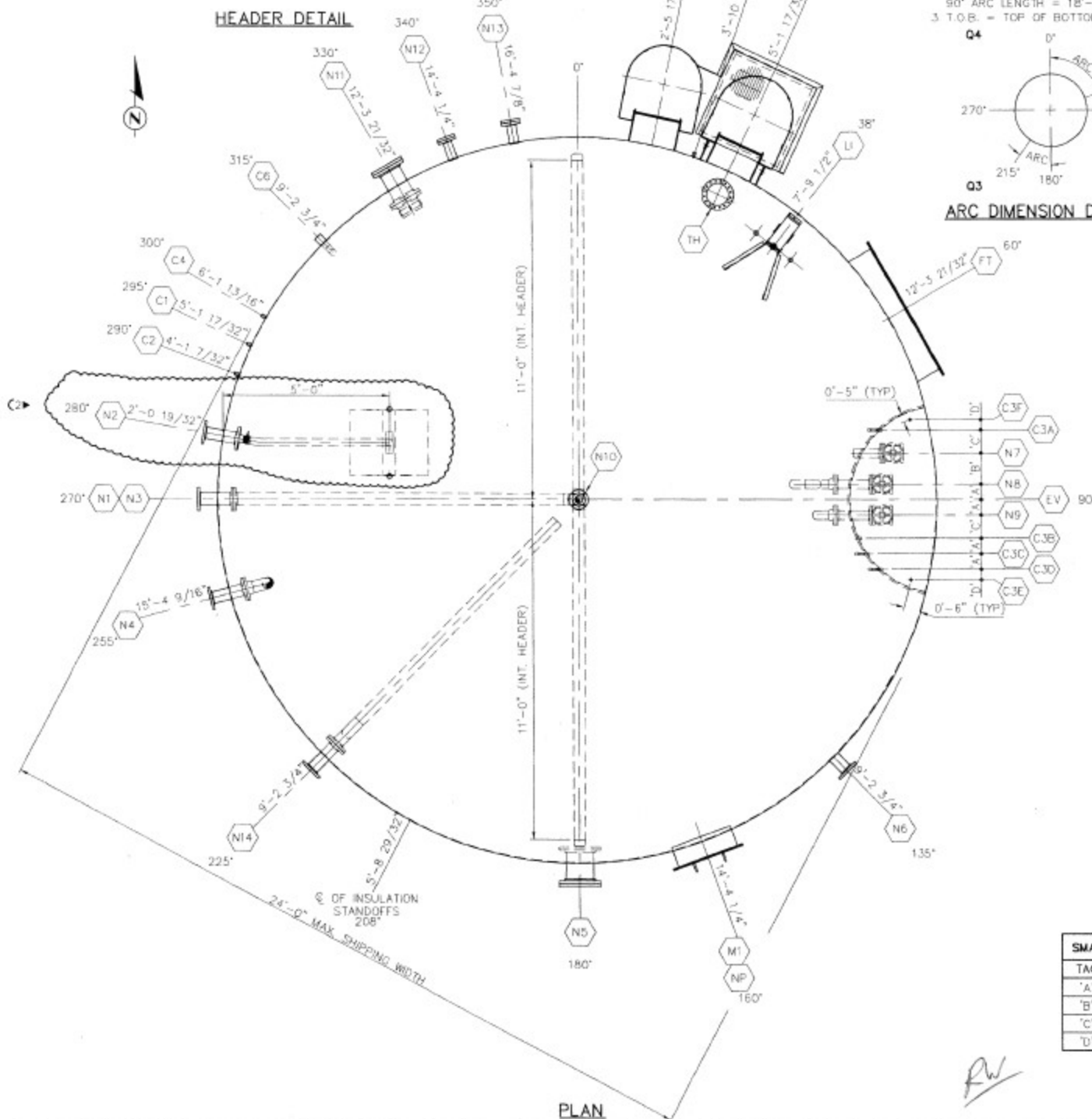
NAMEPLATE STAMPING DETAIL
(STAMPING TO BE 1/4" MIN.)

		G.L.M. Industries L.P.	
DESIGNED BY P. NGUYEN	CHECKED BY JY	APPROVED FOR JY	
DATE: JAN. 26, 2011	DATE: APR 15/11	DATE: APR 20/11	
TOLERANCES: API-650 (MODIFIED) 11TH EDITION		DESCRIPTION: TANK DATA	
GLM GOOD INDUSTRY PRACTICES		BAYTEX ENERGY LTD.	
SCALE: N.T.S.		23'-6" O.D. x 32'-0" HIGH	
TYP & PROJ. MGR. #		PRODUCED WATER TANK	
PURCHASE ORDER # 11090122		SEAL CLIFFDALE THERMAL PROJECT PHASE #	
		TAG# 1-900	
		DRAWING NUMBER 11-040-1-1	
		REV. 1	

1. ELEVATIONS ARE GIVEN REFERENCE TO DATUM AS SHOWN IN ELEVATION.
2. ALL ARC LENGTHS ARE MEASURED CLOCKWISE REFERENCE TO NEAREST MAJOR CENTERLINE ON THE OUTSIDE OF BOTTOM SHELL COURSE.
OUTSIDE DIAMETER = 23'-6"
CIRCUMFERENCE = 73'-9 15/16"
90° ARC LENGTH = 18'-5 1/2"
3. T.O.B. = TOP OF BOTTOM (DATUM)



ARC DIMENSION DIAGRAM




NOZZLE SCHEDULE									
MK#	QTY.	SIZE	CLASS	TYPE	O.S.P.	I.S.P.	SERVICE/DESCRIPTION	ELEVATION (SEE NOZZLE LOCATION NOTE 1)	ASS'Y
N1	1	4"	150	RFSO	8"	6"	PRODUCED WATER INLET c/w REM. INT. DISTRIBUTION HEADER	6'-0"	3-A 5-C
N2	1	4"	150	RFSO	8"	4 1/2"	SKIMMER CONN. c/w REM. INT. GLM STD FLOATING SKIMMER	3'-0"	3-A
N3	1	4"	150	RFSO	8"	6"	CENTER BOTTOMS DRAWOFF CONN. c/w REM. INTERNAL PIPING	3'-0"	3-A 5-B
N4	1	4"	150	RFSO	8"	6"	FIXED SKIMMER CONN. c/w REM. INT. RISER	8'-0"	3-A 4-C
N5	1	10"	150	RFSO	8"	6"	CROSSOVER CONN. c/w RF BLIND FLG. & INT. BRK. FLANGE	3'-0"	3-A
N6	1	4"	150	RFSO	8"	1/4"	BOTTOMS CONN.	0'-6"	3-B
N7	1	3"	150	RFSO	8"	2"	TRUCK OUT CONN. c/w FLANGED GATE VALVE	3'-0"	3-B
N8	1	3"	150	RFSO	8"	6"	TRUCK OUT CONN. c/w FLANGED GATE VALVE & REM. INT. RISER	3'-0"	3-A 4-A
N9	1	3"	150	RFSO	8"	6"	WATER OUT c/w FLANGED GATE VALVE & REM. INT. DOWNSPOUT	3'-0"	3-A 4-B
N10	1	3"	150	RFSO	8"	FLUSH	VENT CONN. c/w RF BLIND FLG.	CTR. OF ROOF	3-C
N11	1	8"	150	RFSO	8"	6"	FUTURE DISPOSAL PUMP SUCTION c/w REM. VORTEX BREAKER & BLIND FLG.	3'-0"	3-A/ VB-2
N12	1	3"	150	RFSO	8"	1/4"	LT-FUTURE WATER DISPOSAL PUMP c/w RF BLIND FLG	1'-0"	3-B
N13	1	3"	150	RFSO	8"	1/4"	LSL- FUTURE CAPACITANCE PROBE CONN. c/w RF BLIND FLG	5'-0"	3-B
N14	1	4"	150	RFSO	8"	6"	VRU CONN. c/w REM. INT. RISER	16'-0"	3-A 5-A
C1	1	2"	3000	FNPT	FULL	1/4"	HLSD CONN.	30'-0"	3-D
C2	1	2"	3000	FNPT	FULL	1/4"	LLSD CONN. - FIRETUBE	8'-0"	3-D
C3 A/T	6	1/2"	3000	FORDNG	FULL	1/4"	SAMPLE CONN. c/w SPRING RETURN BALL VALVES AND REM. INT. RISERS	SEE ELEV.	3-E
C4	1	3/4"	3000	FORDNG	FULL	1/4"	TI CONN. c/w 3/4" x 1/2" TW (RANGE: -20°C TO 120°C)	11'-0"	3-F
C5	1	3/4"	3000	FORDNG	FULL	1/4"	TC CONN. - SMS	7'-0"	3-D
C6	1	2"	3000	FNPT	FULL	1/4"	BLANKET GAS CONN. c/w REM. INT. RISER	3'-0"	4-D
TH	1	8"	FAB'D	FAB'D	8"	1/4"	THIEF HATCH CONN.	ROOF	THIEF
LI	1	2"	3000	FNPT	FULL	1/4"	STD. GLW/ HAMKEY RED TAIL S.S. LEVEL GAUGE c/w GAUGE BOARD AND PVC FLOAT ASSEMBLY	ROOF	6-B GHGL-1
FT	1	12"	FAB'D	FAB'D	6"	1/4"	OVAL FIRETUBE THROAT c/w BLANK COVER	6'-0"	12-DV-1
M1	1	24"x48"	FAB'D	FAB'D	6"	1/4"	OVAL SHELL MANWAY c/w SPUT COVER	2'-B 3/4"	7-A
NP	1	N/A	N/A	N/A	N/A	N/A	S.S. NAMEPLATE c/w C.S. BRACKET	5'-6"	NP-A
EV	1	N/A	N/A	N/A	N/A	N/A	ENVIRO VAULT ASSEMBLY (DWG.# E66Wx5H-1/2)	SEE ELEV.	6-A
LAD1	1	N/A	N/A	N/A	N/A	N/A	GLM STD. 16'-0" LOWER OH&S LADDER c/w SAFETY CAGE	SEE ELEV.	LAD1OHS
LAD2	1	N/A	N/A	N/A	N/A	N/A	GLM STD. 16'-0" UPPER OH&S LADDER c/w SAFETY CAGE	SEE ELEV.	LAD1OHS
PLT	1	36"x36"	N/A	N/A	N/A	N/A	INTERMEDIATE SHELL PLATFORM	SEE ELEV.	8-A
LL	4	N/A	N/A	N/A	N/A	N/A	GLM STD. LIFTING LUG MODEL# 40KLL-1	STD.	LLUG
TL	2	N/A	N/A	N/A	N/A	N/A	GLM STD. TAILING LUG MODEL# 40KTL-1	STD.	TLUG
GL	1	N/A	N/A	N/A	N/A	N/A	GLM STD. GROUNDING LUG	STD.	GLUG
INS	4	N/A	N/A	N/A	N/A	N/A	GLM STD. INSULATION STANDOFF	STD.	STANDOFF

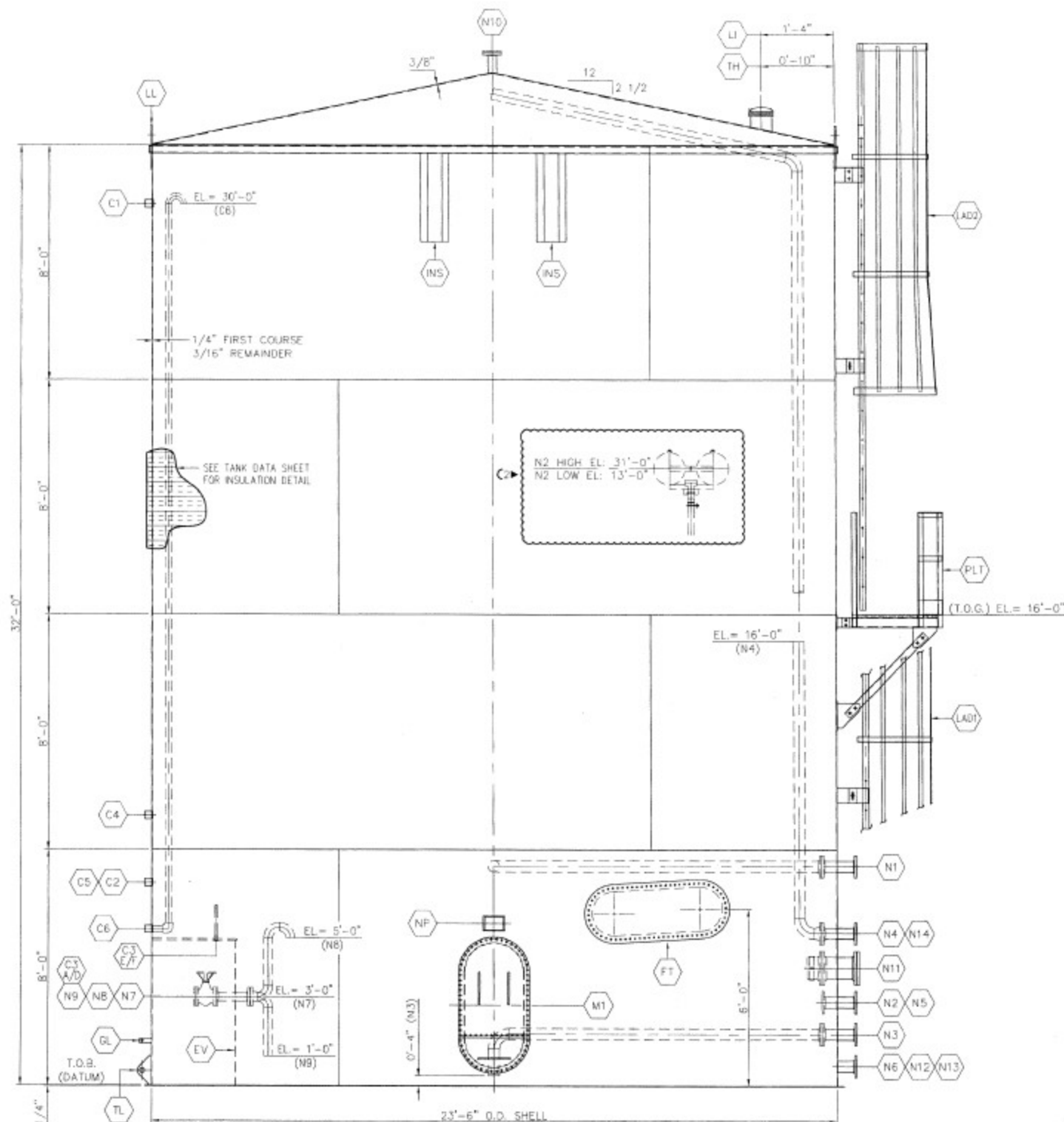
TAG	DIMENSION
'A'	0'-6"
'B'	1'-0"
'C'	0'-9"
'D'	0'-4"



G.L.M. Industries L.P.

2	3	0	C	NO	DATE	REVISION	BY	APP'D
JUL 18/11	MAY 16/11	APR 05/11	FEB 28/11					
UNIV. GLM ECLAIRAGE SKAMMER TO N2	REV'D TAIL LUGS	REV'D AS PER RECD 04/01/11	REV'D AS PER RECD 02/05/11					
						<h1>G.L.M. Industries L.P.</h1>		
					DRAWN BY P. NGUYEN & DATE: JAN. 25, 2011	CHECKED BY JY & DATE: APR 15/11	APPROVED FOR CONSTRUCTION BY JY & DATE: APR 20/11	
					TOLERANCES: API-650 (MODIFIED) 11TH EDITION GLM GOOD INDUSTRY PRACTICES SCALE: N.T.S. WTP & PROJ. MGR. #	DESCRIPTION: GENERAL ARRANGEMENT (ORIENTATION) BAYTEX ENERGY LTD. 23"-6" O.D. x 32"-0" HIGH PRODUCED WATER TANK SEAL CLIFFDALE THERMAL PROJECT PHASE II TAG# T-900		
					PURCHASE ORDER # 15090122	DRAWING NUMBER 11-040-1-2A		REV. 2

THIS DRAWING IS THE PROPERTY OF G.L.M. INDUSTRIES L.P. AND IS TO BE USED ONLY IN CONNECTION WITH WORK PERFORMED BY G.L.M. INDUSTRIES L.P. THE DRAWING IS NOT TO BE COPIED IN WHOLE OR IN PART AND MUST BE RETURNED UPON REQUEST.



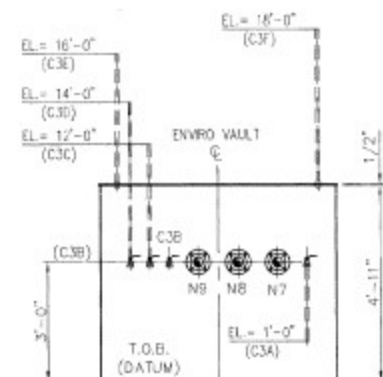
ELEVATION

(ALL ATTACHMENTS IN THIS VIEW ARE FOR REPRESENTATION ONLY.
REFER TO NOZZLE SCHEDULE FOR TRUE ELEVATION)

BOTTOM/ROOF BUTT WELD	SHELL ORC. OR VERT. SEAM WELD	SHELL TO FLOOR WELD
WPS# 2-1-129A(R2)	WPS# 1-1-049A(R2)	WPS# 2-1-129A(R2)
WPS# 1-1-051A(R2)	WPS# 2-1-129A(R2)	WPS# 1-1-051A(R2)
ROOF TO SHELL WELD	WN FLG. OR PIPE TO PIPE WELD	SUP-ON FLG. TO NECK WELD
WPS# 1-1-051A(R2)	WPS# 1-1-051A(R2)	WPS# 2-1-129A(R2)
WPS# 1-1-051A(R2)	31-1-066A(R4)/2-1-129A(R2)	WPS# 1-1-051A(R2)
ROOF NOZZLE/COUPLING WELD	SHELL NOZZLE/COUPLING WELD	MISC. STRUCTURAL WELD
SWAW PORTION (FOR S.S.)	SWAW PORTION (FOR S.S.)	SWAW PORTION (FOR S.S.)
WPS# 41-8/1-163(R2)	WPS# 41-8/1-163(R2)	WPS# 41-8/1-163(R2)
WPS# 1-1-051A(R2)	WPS# 1-1-051A(R2)	WPS# 1-1-051A(R2)
SHELL NOZZLE w/ RE-PAD WELD	PLATE FLG. TO NECK WELD	
WPS# 1-1-051A(R2)	WPS# 1-1-051A(R2)	

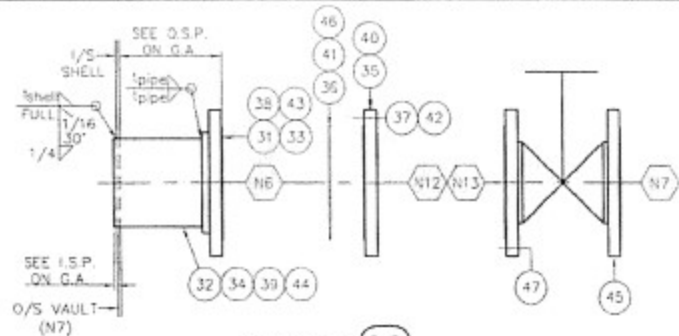
GENERAL WELDING NOTES:

1. BEVELS TO BE +/- 10°
2. LANDS AND GAPS TO BE +/- 1/16"
3. SEE DETAIL DRAWING FOR SPECIFIC WELD SIZE AND JOINT PREP.
4. ITEM IN BRACKETS FOLLOWING WPS# INDICATE WELD PROCEDURE REV. #

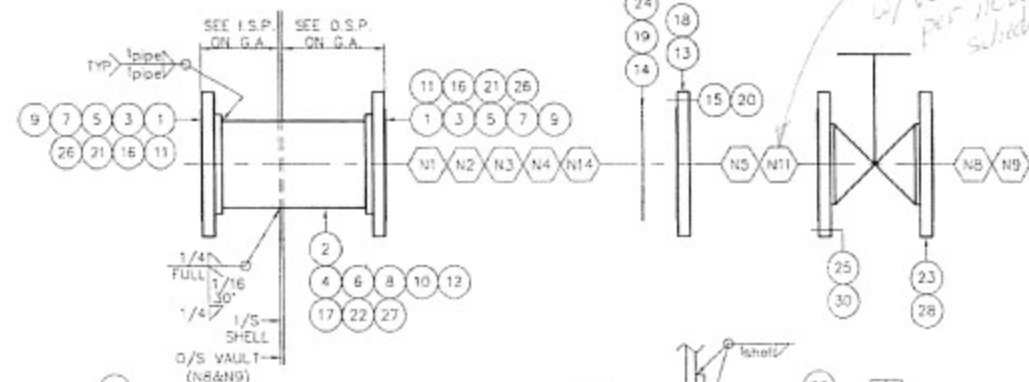


ENVIRO VAULT (ELEVATION)

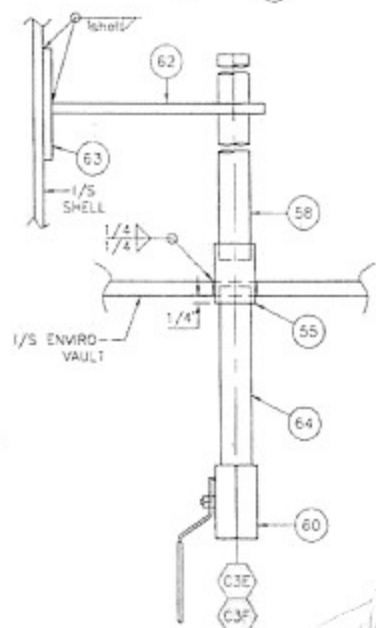
		G.L.M. Industries L.P.	
DR	DB	DB	DB
ADD'L G.M. COMMENTS	REV'D WELD PROCEDURES	REV'D AS PER CUST. MARK-UPS	REV'D AS PER CUST. MARK-UPS
DATE: JUL 18/11	DATE: MAY 16/11	DATE: APR 05/11	DATE: FEB 28/11
BY: P. NGUYEN	BY: JY	BY: JY	BY: JY
DATE: JAN. 25, 2011	DATE: APR 15/11	DATE: APR 20/11	DATE: APR 20/11
TOLERANCES: API-650 (MODIFIED) 11TH EDITION	DESCRIPTION: GENERAL ARRANGEMENT (ELEVATION)		
G.L.M. GOOD INDUSTRY PRACTICES	BAYTEX ENERGY LTD.		
SCALE: N.T.S.	23'-6" O.D. x 32'-0" HIGH		
ITP & PROD. MGR. #	PRODUCED WATER TANK		
PURCHASE ORDER # 11090122	SEAL CLIFFDALE THERMAL PROJECT PHASE II		
	TAG# T-900		
	DRAWING NUMBER 11-040-1-2B		
	REV. 2		



ASSEMBLY 3-B



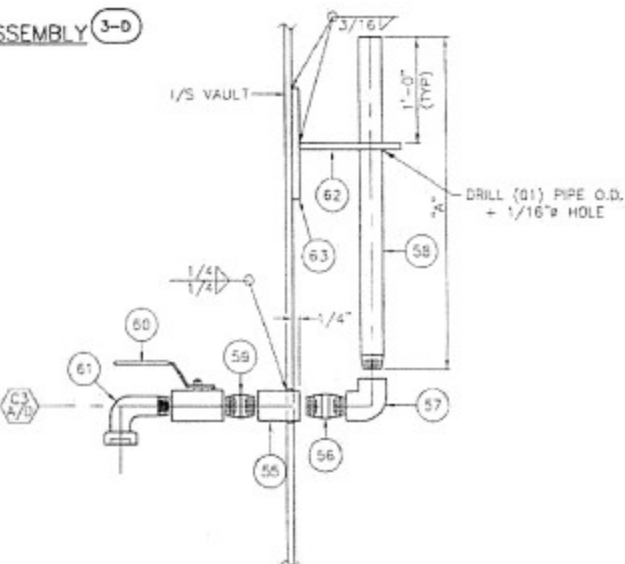
ASSEMBLY 3-A



ASSEMBLY 3-E COUPLING C3E/F DETAIL

FITTING	A' DIMENSION	DIRECTION	# OF SUPPORTS
C3A	0'-11 3/4"	DOWN	0
C3B	-	-	0
C3C	8'-11 3/4"	UP	1
C3D	10'-11 3/4"	UP	1
C3E	10'-11 3/4"	UP	1
C3F	12'-11 3/4"	UP	1

ASSEMBLY 3-E COUPLING C3A/D DETAIL

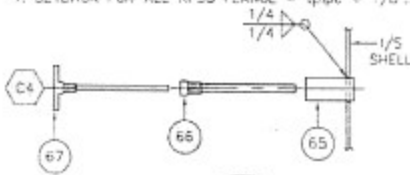


ASSEMBLY 3-D

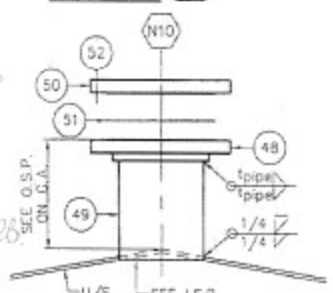
BILL OF MATERIAL QUANTITIES SHOWN ARE FOR (01) TANK, (01) REQD						BILL OF MATERIAL QUANTITIES SHOWN ARE FOR (01) TANK, (01) REQD									
ITEM NO.	MARK	QTY	PRICE	DESCRIPTION	SPECIFICATION	WEIGHT (LBS)	MATL	ITEM NO.	MARK	QTY	PRICE	DESCRIPTION	SPECIFICATION	WEIGHT (LBS)	MATL
41		1		3" CL 150 SPIRAL WOUND GASKET STYLE 'CG'	304 SS w/ NON-ASB.	1	D	3-A		9		SHELL NOZZLE w/ BRK F.G. ASSEMBLY			
42		4		5/8" STUDS x 0'-3 1/2" LG c/w (2) NUTS EA.	A-193-B7 A-194-2H	2	D	N1 (46)	1	2		4" CL 150 RFSDO FLANGE	SA-105N	30	B
		43	1	3" CL 150 RFSDO FLANGE	SA-105N	9	B	N2 (46)	2	1		4" X5 WT SMLS PIPE x 1'-1 5/16" LG	SA-106-B	16	B
		44	1	3" X5 WT SMLS PIPE x 0'-10 3/4" LG	SA-106-B	9	B		3	2		4" CL 150 RFSDO FLANGE	SA-105N	30	B
		45	1	3" 150# RF FLANGED GATE VALVE	MFG STD	15	D	N3 (46)	4	1		4" X5 WT SMLS PIPE x 1'-1 5/16" LG	SA-106-B	16	B
		46	1	3" CL 150 SPIRAL WOUND GASKET STYLE 'CG'	304 SS w/ NON-ASB.	1	D	N4 (46)	5	2		4" CL 150 RFSDO FLANGE	SA-105N	30	B
		47	4	5/8" STUDS x 0'-3 1/2" LG c/w (2) NUTS EA.	A-193-B7 A-194-2H	2	D		6	1		4" X5 WT SMLS PIPE x 1'-1 5/16" LG	SA-106-B	16	B
3-C		1		ROOF NOZZLE ASSEMBLY				N14 (46)	7	2		4" CL 150 RFSDO FLANGE	SA-105N	30	B
		48	1	3" CL 150 RFSDO FLANGE	SA-105N	9	B		8	1		4" X5 WT SMLS PIPE x 1'-1 5/16" LG	SA-106-B	16	B
		49	1	3" X5 WT SMLS PIPE x 0'-9" LG	SA-106-B	7	B		9	2		4" CL 150 RFSDO FLANGE	SA-105N	30	B
		50	1	3" CL 150 RF BLIND FLANGE	SA-105N	10	D		10	1		4" X5 WT SMLS PIPE x 1'-1 5/16" LG	SA-106-B	16	B
		51	1	3" CL 150 SPIRAL WOUND GASKET STYLE 'CG'	304 SS w/ NON-ASB.	1	D	N5 (246)	11	2		10" CL 150 RFSDO FLANGE	SA-105N	100	B
		52	4	5/8" STUDS x 0'-3 1/2" LG c/w (2) NUTS EA.	A-193-B7 A-194-2H	2	D		12	1		10" X5 WT SMLS PIPE x 1'-1" LG	SA-106-B	60	B
3-D		3		SHELL COUPLING ASSY					13	1		10" CL 150 RF BLIND FLANGE	SA-105N	77	D
C1/C2		53	2	2" CL 3000 NPT FULL COUPLING	SA-182-F304L	3	B		14	1		10" CL 150 SPIRAL WOUND GASKET STYLE 'CG'	304 SS w/ NON-ASB.	1	D
C3		54	1	3/4" CL 3000 NPT FORGING x 3 1/2" LG	SA-182-F304L	1	B		15	12		7/8" STUDS x 0'-5 1/2" LG c/w (2) NUTS EA.	A-193-B7 A-194-2H	8	D
3-E		6		SAMPLE LINE ASSY					16	2		8" CL 150 RFSDO FLANGE	SA-105N	66	B
		55	6	1/2" CL 3000 NPT FORGING x 3 1/2" LG	SA-182-F304L	4	B		17	1		8" X5 WT SMLS PIPE x 1'-1" LG	SA-106-B	50	B
		56	3	1/2" STD. WT. NIPPLE x 0'-4" LG (TBC)	A-182-F304	5	D	N11 (171)	18	1		8" CL 150 RF BLIND FLANGE	SA-105N	48	D
		57	3	1/2" CL 150 90° NPT ELBOW	A-402-NP-304	3	D		19	1		8" CL 150 SPIRAL WOUND GASKET STYLE 'CG'	304 SS w/ NON-ASB.	1	D
		58	5	1/2" STD. WT. ERW PIPE x 1' LG (TBC)	A-182-F304	45	D		20	8		3/4" STUDS x 0'-5" LG c/w (2) NUTS EA.	A-193-B7 A-194-2H	6	D
		59	6	1/2" STD. WT. ERW CLOSE NIPPLE	A-53-B	3	D		21	2		3" CL 150 RFSDO FLANGE	SA-105N	18	B
		60	6	1/2" SPRING LOADED BALL VALVE	C.S.	12	D		22	1		3" X5 WT SMLS PIPE x 1'-1 3/8" LG	SA-106-B	13	B
		61	4	1/2" 150# 90° STREET ELBOW	M.I.	4	D	NB (49)	23	1		3" 150# RF FLANGED GATE VALVE	MFG STD	15	D
		62	4	3/16" THK. x 2" F.B. x SHOP TO SUIT	A-479-304	2	D		24	1		3" CL 150 SPIRAL WOUND GASKET STYLE 'CG'	304 SS w/ NON-ASB.	1	D
		63	4	1/4" THK. x 0'-4" WEAR PAD	A-36	3	D		25	4		5/8" STUDS x 0'-3 1/2" LG c/w (2) NUTS EA.	A-193-B7 A-194-2H	2	D
		64	2	1/2" STD WT ERW PIPE x 0'-10" LG (TBC)	A-53-B	3	D		26	2		3" CL 150 RFSDO FLANGE	SA-105N	18	B
3-F		1		SHELL COUPLING ASSY					27	1		3" X5 WT SMLS PIPE x 1'-1 3/8" LG	SA-106-B	13	B
		65	1	3/4" CL 3000 NPT FORGING x 3 1/2" LG	SA-182-F304L	1	B	N9 (49)	28	1		3" 150# RF FLANGED GATE VALVE	MFG STD	15	D
		66	1	3/4" x 1/2" x 12" LG THERMOWELL	MFG. STD.	1	D		29	1		3" CL 150 SPIRAL WOUND GASKET STYLE 'CG'	304 SS w/ NON-ASB.	1	D
		67	1	TEMP. GAUGE w/ 5" FACE, 12" LG STEM, & 1/2" NPT CONN. (-20°C TO 120°C RANGE)	MFG. STD.	1	D		30	4		5/8" STUDS x 0'-3 1/2" LG c/w (2) NUTS EA.	A-193-B7 A-194-2H	2	D
								3-B		4		SHELL NOZZLE ASSEMBLY			

NOTE:

1. SETBACK FOR ALL RFSDO FLANGE = tpipe + 1/8".



ASSEMBLY 3-F



ASSEMBLY 3-C

these dimensions do not match sample elevation dimensions shown on 11-040-1-28

G.L.M. Industries L.P.	
DRAWN BY D. BRANN DATE: APR. 06, 2011	CHECKED BY JY DATE: APR 15/11
APPROVED FOR CONSTRUCTION BY JY DATE: APR 20/11	
TOLERANCES: API-650 (MODIFIED) 11TH EDITION G.L.M. GOOD INDUSTRY PRACTICES	
DESCRIPTION: MISC. NOZZLE/COUPLING DETAILS BAYTEX ENERGY LTD. 23'-6" O.D. x 32'-0" HIGH PRODUCED WATER TANK SEAL CLIFFDALE THERMAL PROJECT PHASE II TAG# 1-900	
REV. 02/11 DATE: 05/19/11 PURCHASE ORDER # 11090122	DRAWING NUMBER: 11-040-1-3 REV. 1