

VIP Dorm

Kitimat, BC



2011 VIP Dorm - 6 Unit, 12' x 60'

BUILDINGS FOR IMMEDIATE SALE

- 6-unit configurations available to house 23 people
- Electric: Washer/Dryer, AC Units, Hallway Baseboard Heaters,
- Propane: Hot Water Heaters, Furnaces
- Each room complete with bed, mattress, desk and private bathroom
- Skidded units
- Built to Alberta part 10 and/or British Columbia part 9 building codes



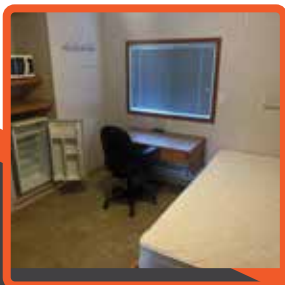
Entrance Exterior



Shared Laundry Room



Private Washrooms



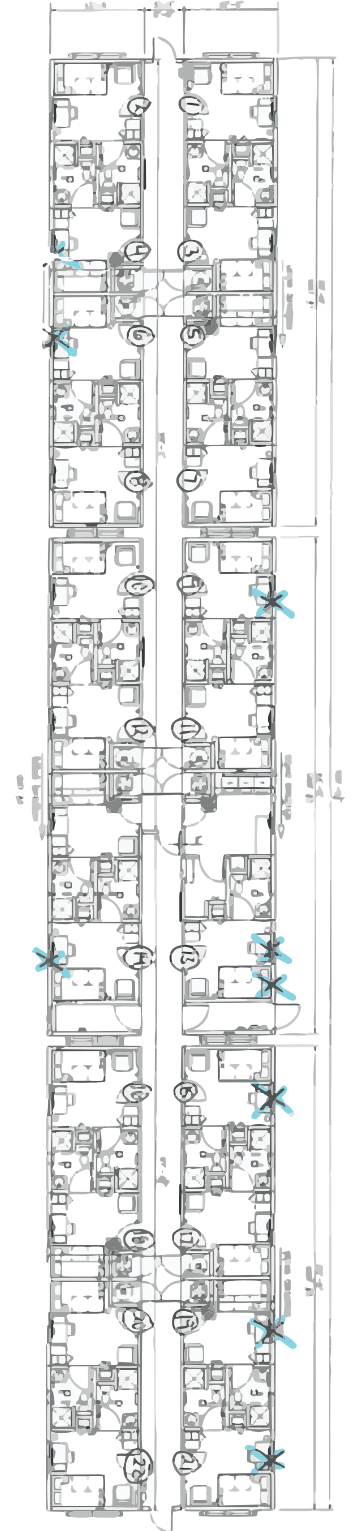
Bedroom



Bedroom



Interior Hallway



Fuelled

1-855-383-5533