

# 12 x Jack and Jill Dorms Kitimat, BC

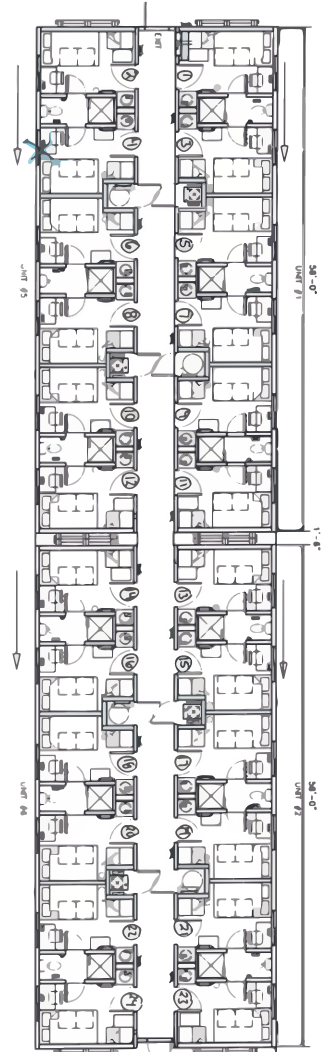


Fig 1 - Living Space

## 2012 Jack & Jill Washroom Dorms - 8 Unit, 12' x 60'

### BUILDINGS FOR IMMEDIATE SALE

- 8-unit configurations available to house 44 people
- Electric: Washer/Dryer, AC Units, Hallway Baseboard Heaters,
- Propane: Hot Water Heaters, Furnaces
- Each room complete with bed, mattress and desk
- Skidded units
- Built to Alberta part 10 and/or British Columbia part 9 building codes



Entrance Exterior



Shared Laundry Room

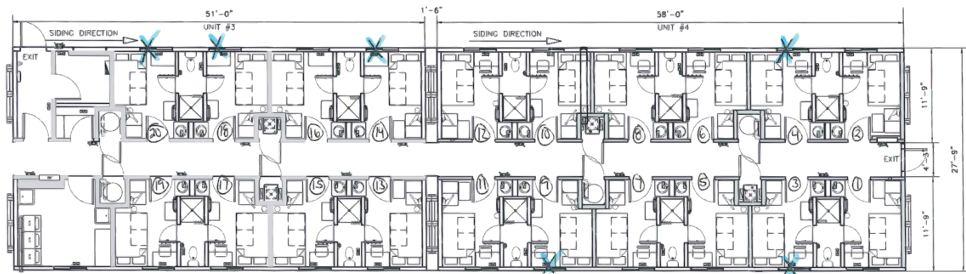


Fig. 2 - Living Space W/ Utilities Space



Bedroom



Bedroom



Interior Hallway



Shared Washrooms

*Fuelled*

1-855-383-5533