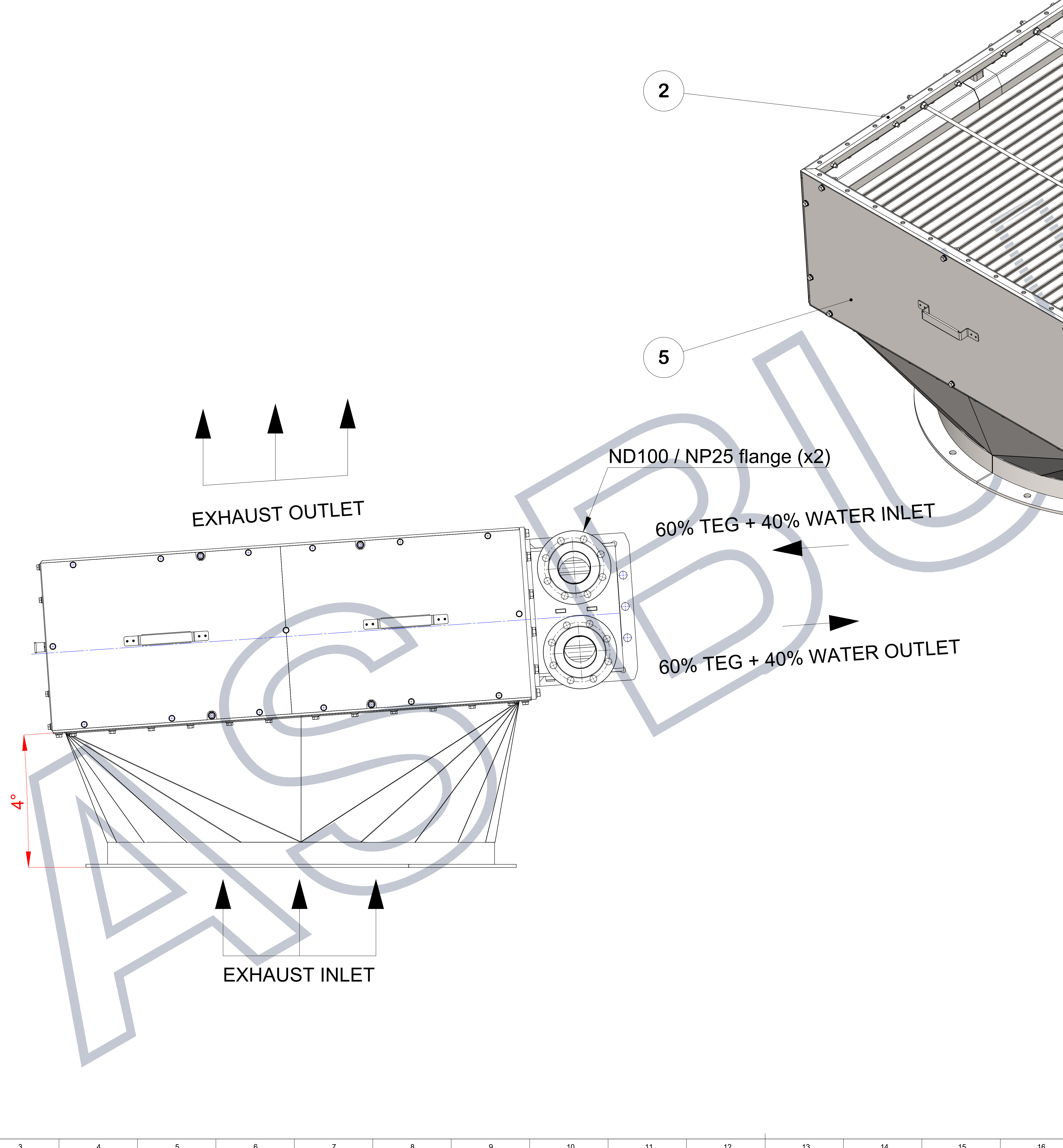


Unspecified limit deviations for assemblies		Linear dimensions	
From ... up to, including	Assembly processing	Mechanical assembling	Soldering, brazing, welding
0-10	-0.05	-0.1	-0.2
10-100	-0.1	-0.2	-0.4
100-200	-0.2	-0.3	-0.7
200-350	-0.3	-0.5	-1
350-500	-0.5	-1	-2
500-1000	-1	-1.5	-3
1000-2000	-1.5	-2	-5
2000-4000	-2	-3	-10

**NOTE**

- \* Bundle of 260 x Ø28 stainless steel water filled heat pipes.
- \* 60% TEG + 40% water mass flow rate: 42,400 kg/hr. @ 0.8257 kcal/kg°C.



POS.	DESCRIPTION	PART NO.	MATERIAL	WEIGHT	QTY.
1	THERMAL MODULE ASS'Y	Q1703-01	subassembly	930.990	1
2	MODULE STAND ASS'Y	Q1703-02	subassembly	83.032	1
3	FUNNEL ASS'Y	Q1703-03	subassembly	74.266	1
4	SIDE COVER ASS'Y	Q1703-04	subassembly	16.508	4
5	BOTTOM COVER ASS'Y	Q1703-05	subassembly	13.652	1
6	HEX. HEAD BOLT M10 x 65 x 26	ISO 4016	commercial item	0.0515	40
7	PLAIN WASHER A10	ISO 7089	commercial item	0.0036	40
8	SPRING LOCK WASHER A10	DIN 128	commercial item	0.0024	40
9	HEX. HEAD BOLT M12 x 70 x 30	ISO 4016	commercial item	0.0788	44
10	PLAIN WASHER A12	ISO 7089	commercial item	0.0062	44
11	SPRING LOCK WASHER A12	DIN 128	commercial item	0.0036	44
12	HEX. HEAD BOLT M16 x 90 x 38	ISO 4016	commercial item	0.1823	26
13	PLAIN WASHER A16	ISO 7089	commercial item	0.0112	52
14	SPRING LOCK WASHER A16	DIN 128	commercial item	0.0080	26
15	HEXAGON NUT M16	ISO 4032	commercial item	0.0393	26

Designed ing. Mihai Groza Drawn ing. Mihai Groza Checked ing. Cristinel Crisan Q.A. ing. Adrian Florea Approval ing. Cristinel Crisan	Weight: 1181 kg Date: 21.12.2017	<b>Q1703</b> Revision: rev. 06 <b>GAS - 60% TEG / 40% WATER          HE - 630 kW ASS'Y</b> Ref: QSI HEAT PIPE SRL	1 4
---	-------------------------------------	--	--------



W:\01\_Producere\Proiectate\Coduri\_Client\preluate\OSI\2017-003\SW\_var-4\Q1703\_Heat-exchanger-630kW\_ass\_rev06

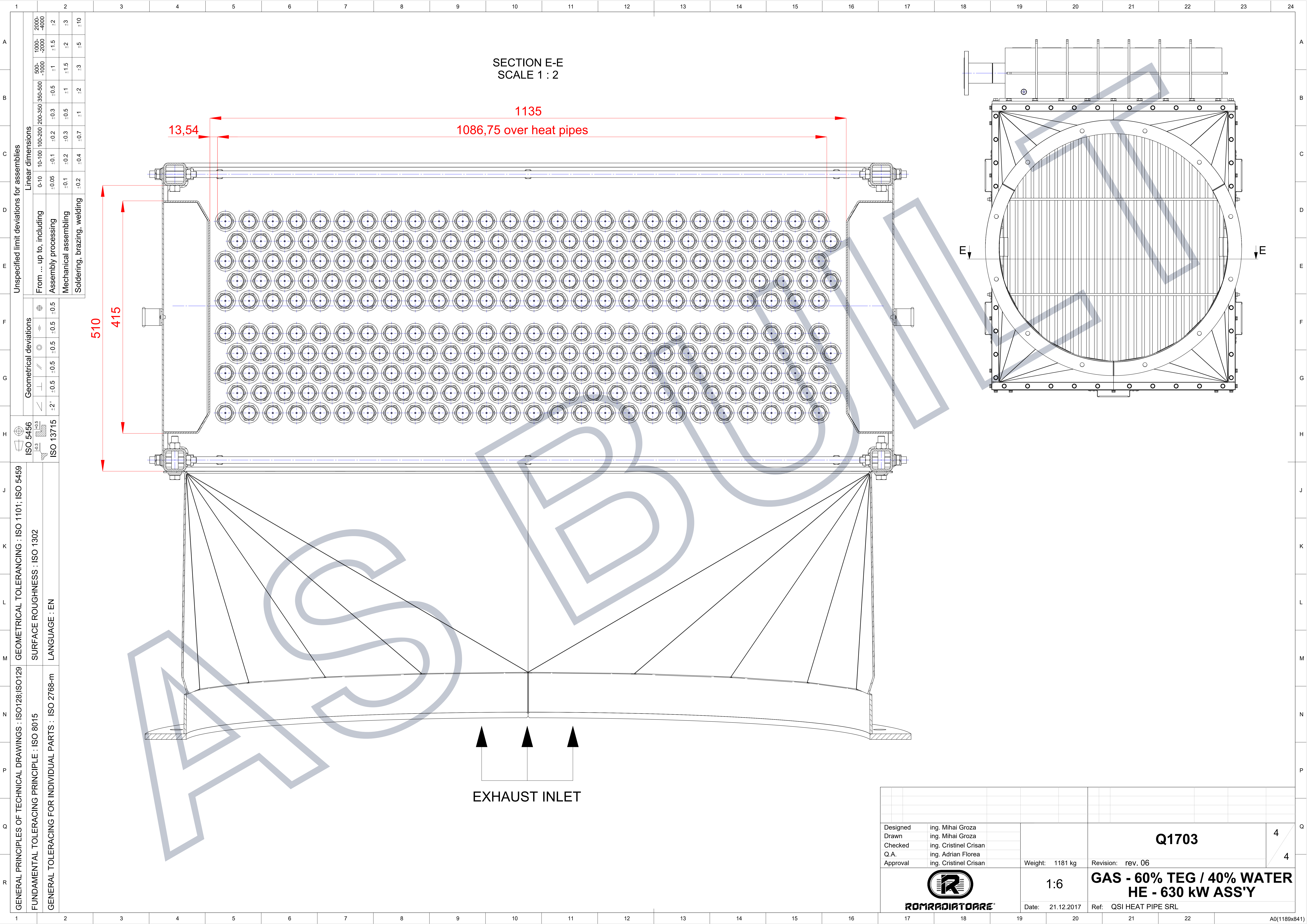






GENERAL PRINCIPLES OF TECHNICAL DRAWINGS : ISO 1101; ISO 5459		Geometrical deviations		Linear dimensions	
FUNDAMENTAL TOLERANCING PRINCIPLE : ISO 8015		ISO 5456		From ... up to, including	
GENERAL TOLERANCING FOR INDIVIDUAL PARTS : ISO 2768-m		ISO 13715		0-10	
		ISO 1302		10-100	
		EN		100-200	
				200-350	
				350-500	
				500-1000	
				1000-2000	
				2000-4000	
				4000	
				±0.5	
				±1	
				±1.5	
				±2	
				±3	
				±5	
				±10	
				±0.1	
				±0.2	
				±0.3	
				±0.5	
				±1	
				±1.5	
				±2	
				±3	
				±5	
				±10	
				±0.05	
				±0.1	
				±0.2	
				±0.3	
				±0.5	
				±1	
				±1.5	
				±2	
				±3	
				±5	
				±10	
				±0.05	
				±0.1	
				±0.2	
				±0.3	
				±0.5	
				±1	
				±1.5	
				±2	
				±3	
				±5	
				±10	
				±0.1	
				±0.2	
				±0.3	
				±0.5	
				±1	
				±1.5	
				±2	
				±3	
				±5	
				±10	
				±0.1	
				±0.2	
				±0.3	
				±0.5	
				±1	
				±1.5	
				±2	
				±3	
				±5	
				±10	
				±0.1	
				±0.2	
				±0.3	
				±0.5	
				±1	
				±1.5	
				±2	
				±3	
				±5	
				±10	
				±0.1	
				±0.2	
				±0.3	
				±0.5	
				±1	
				±1.5	
				±2	
				±3	
				±5	
				±10	
				±0.1	
				±0.2	
				±0.3	
				±0.5	
				±1	
				±1.5	
				±2	
				±3	
				±5	
				±10	
				±0.1	
				±0.2	
				±0.3	
				±0.5	
				±1	
				±1.5	
				±2	
				±3	
				±5	
				±10	
				±0.1	
				±0.2	
				±0.3	
				±0.5	
				±1	
				±1.5	
				±2	
				±3	
				±5	
				±10	
				±0.1	
				±0.2	
				±0.3	
				±0.5	
				±1	
				±1.5	
				±2	
				±3	
				±5	
				±10	
				±0.1	
				±0.2	
				±0.3	
				±0.5	
				±1	
				±1.5	
				±2	
				±3	
				±5	
				±10	
				±0.1	
				±0.2	
				±0.3	
				±0.5	
				±1	
				±1.5	
				±2	
				±3	
				±5	
				±10	
				±0.1	
				±0.2	
				±0.3	
				±0.5	
				±1	
				±1.5	
				±2	
				±3	
				±5	
				±10	
				±0.1	
				±0.2	
				±0.3	
				±0.5	
				±1	
				±1.5	
				±2	
				±3	
				±5	
				±10	
				±0.1	
				±0.2	
				±0.3	
				±0.5	
				±1	
				±1.5	
				±2	
				±3	
				±5	
				±10	
				±0.1	
				±0.2	
				±0.3	
				±0.5	
				±1	
				±1.5	
				±2	
				±3	
				±5	
				±10	
				±0.1	
				±0.2	
				±0.3	
				±0.5	
				±1	
				±1.5	
				±2	
				±3	
				±5	
				±10	
				±0.1	
				±0.2	
				±0.3	
				±0.5	
				±1	
				±1.5	
				±2	
				±3	
				±5	
				±10	
				±0.1	
				±0.2	
				±0.3	
				±0.5	
				±1	
				±1.5	
				±2	
				±3	
				±5	
				±10	
				±0.1	
				±0.2	
				±0.3	
				±0.5	
				±1	
				±1.5	
				±2	
				±3	
				±5	
				±10	
				±0.1	
				±0.2	
				±0.3	
				±0.5	
				±1	
				±1.5	
				±2	
				±3	
				±5	
				±10	
				±0.1	
				±0.2	
				±0.3	
				±0.5	
				±1	
				±1.5	
				±2	
				±3	
				±5	
				±10	
				±0.1	
				±0.2	
				±0.3	
				±0.5	
				±1	
				±1.5	
				±2	
				±3	
				±5	
				±10	
				±0.1	
				±0.2	
				±0.3	
				±0.5	
				±1	
				±1.5	
				±2	
				±3	
				±5	
				±10	
				±0.1	
				±0.2	
				±0.3	
				±0.5	
				±1	
				±1.5	
				±2	
				±3	
				±5	
				±10	
				±0.1	
				±0.2	
				±0.3	
				±0.5	
				±1	
				±1.5	
				±2	
				±3	
				±5	
				±10	
				±0.1	
				±0.2	
				±0.3	
				±0.5	
				±1	
				±1.5	
				±2	
				±3	
				±5	
				±10	
				±0.1	
				±0.2	
				±0.3	
				±0.5	
				±1	
				±1.5	
				±2	
				±3	
				±5	
				±10	
				±0.1	
				±0.2	
				±0.3	
				±0.5	
				±1	
				±1.5	
				±2	
				±3	
				±5	
				±10	
				±0.1	
				±0.2	
				±0.3	
				±0.5	
				±1	
				±1.5	
				±2	
				±3	
				±5	
				±10	
				±0.1	
				±0.2	
				±0.3	
				±0.5	
				±1	
				±1.5	
				±2	
				±3	
				±5	
				±10	
				±0.1	
				±0.2	
				±0.3	
				±0.5	
				±1	
				±1.5	
				±2	
				±3	



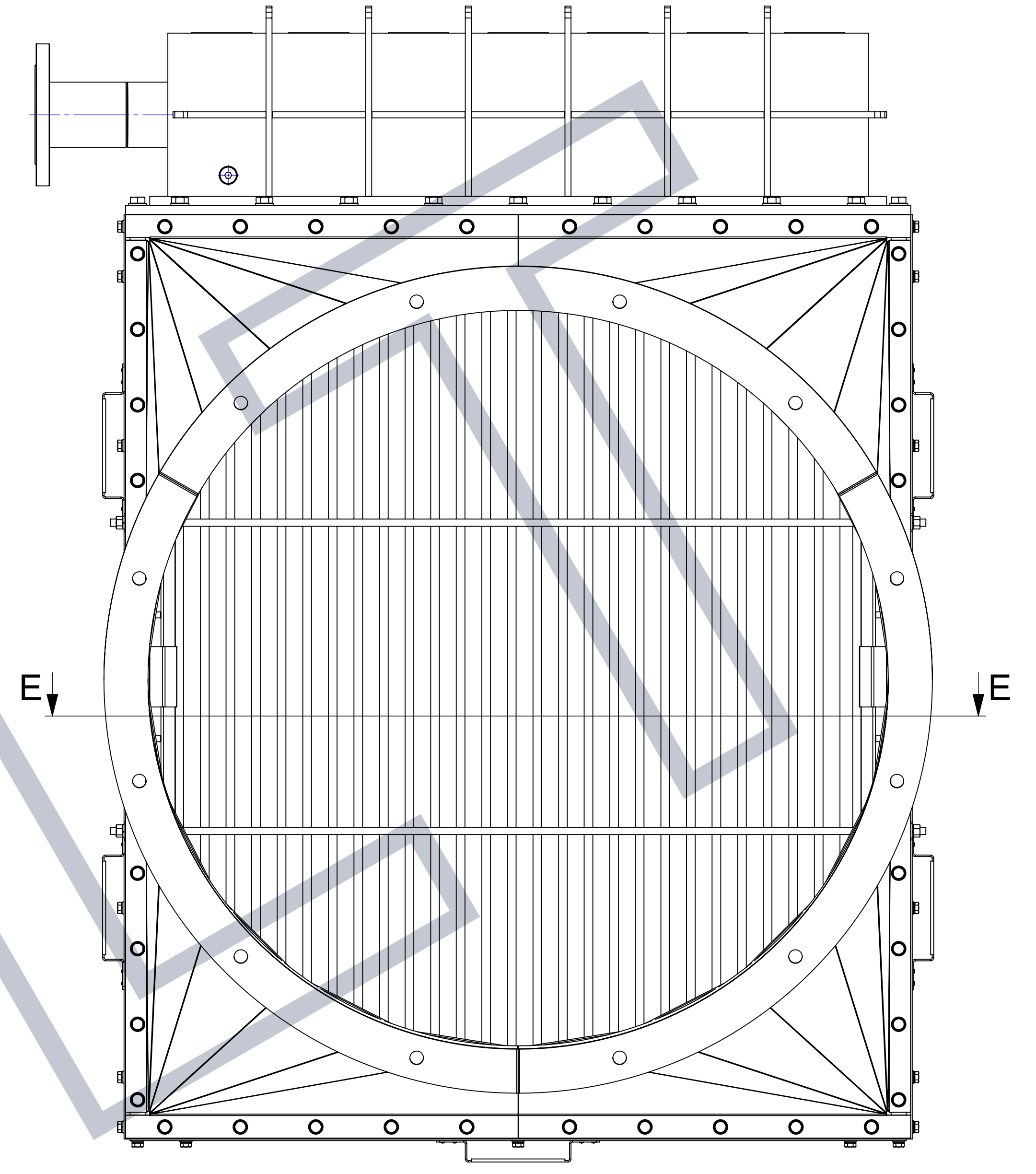


SECTION E-E  
SCALE 1 : 2

1135  
1086,75 over heat pipes  
13,54

510  
415

EXHAUST INLET



A	B	C	D	E	F	G	H	J	K	L	M	N	P	Q	R																
																GENERAL PRINCIPLES OF TECHNICAL DRAWINGS : ISO 1011; ISO 5459															
																FUNDAMENTAL TOLERANCING PRINCIPLE : ISO 8015															
																GENERAL TOLERANCING FOR INDIVIDUAL PARTS : ISO 2768-m															
GEOMETRICAL TOLERANCING : ISO 1101; ISO 5459																															
SURFACE ROUGHNESS : ISO 1302																															
LANGUAGE : EN																															
ISO 5456																															
ISO 13715																															
Geometrical deviations																															
From ... up to, including																															
Assembly processing																															
Mechanical assembling																															
Soldering, brazing, welding																															
Linear dimensions																															
0-10																															
10-100																															
100-200																															
200-500																															
500-1000																															
1000-2000																															
2000-4000																															

Designed	ing. Mihai Groza	Weight: 1181 kg	Revision: rev. 06	4
Drawn	ing. Mihai Groza			
Checked	ing. Cristinel Crisan			
Q.A.	ing. Adrian Florea			
Approval	ing. Cristinel Crisan			
		Date: 21.12.2017	Ref: QSI HEAT PIPE SRL	4
		1:6	<b>GAS - 60% TEG / 40% WATER HE - 630 kW ASS'Y</b>	