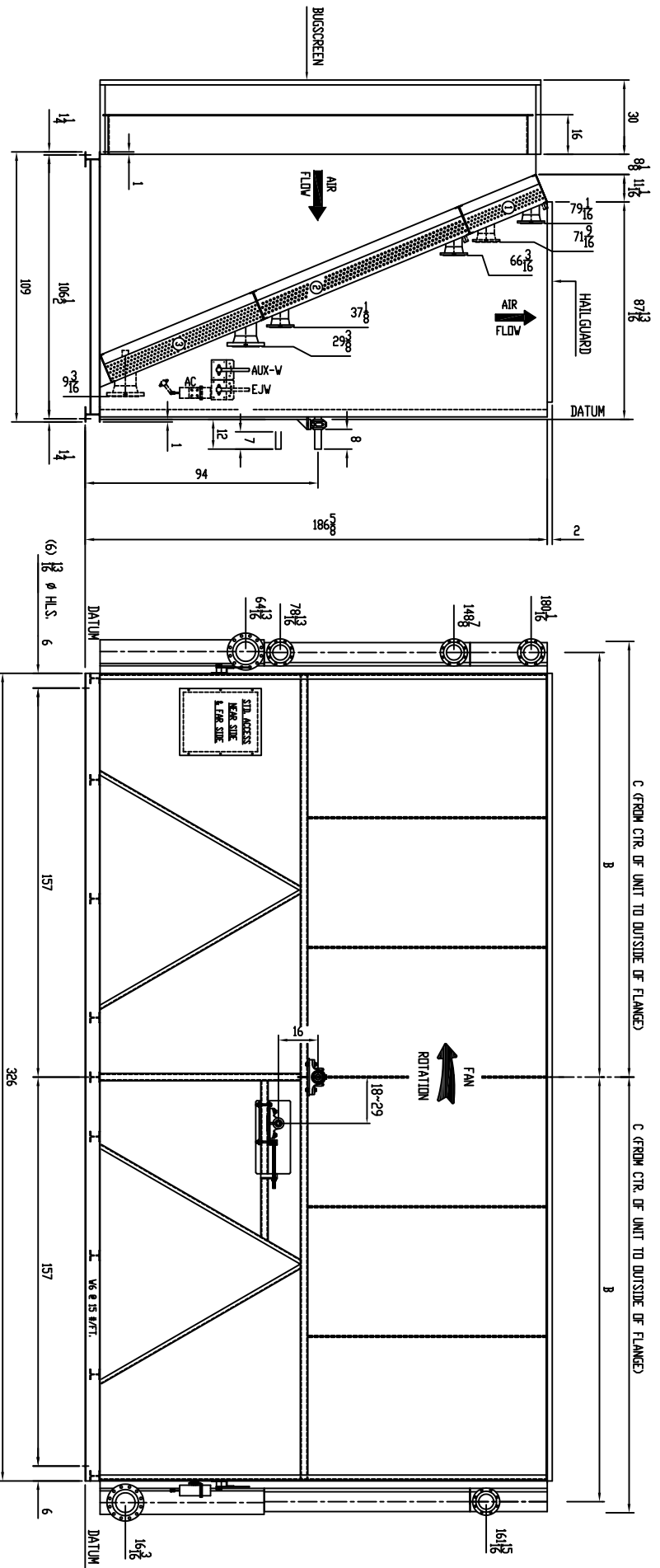


ITEM	SERVICE	MAWP	CODE	NOZZLES			COUPLING V&D/TEMP.	REF. DIMENSION			BUG SCREEN	DRIVE	FAN	FINISH
				INLET	OUTLET			B	C					
1	EJW (39.0 GALS)	14 PSI @ 300/-20°F	NONE	6-150 RFWN	6-150 RFWN	1-3000	171.375	176.875	MANUAL		ENGINE DRIVE SHEAVES, BELTS AND GUARDS BY OTHERS Ø2.4375 IDLER SHAFT WITH 625 x 3125 KMY (ENCLOSED)	168# MOORE 10K, 60 VT HD 12-BLADE 14" PA LH ROTATION 222 RPM @ 67.2 HP REQ'D	STRUCTURE STD PRIMER W/ WARM GREY ENAMEL TOP COAT	
2	AUX-W (126.5 GALS)	14 PSI @ 300/-20°F	NONE	6-150 RFWN	6-150 RFWN	1-3000	171.375	176.875	MANUAL	YES (SOFT)	Ø3.4375 FAN DRIVE SHAFT WITH .875 x .4375 KMY.	Ø3.4375 BORE WITH .875 x .4375 KMY.		
3	AC	300 PSI @ 350/-20°F	ASME	8-300 RFWN	8-300 RFWN	1-6000	171.75	179.25	AUTO				HAILGUARD & BUG FRAME GALVANIZED	



ESTIMATED DRY WEIGHT 35,600#		FOR: TOROMONT ENERGY		P.O. NO: P0NZ05422		CUST. TAG: -		USER: FOCUS ENERGY TRUST		JOB NO: 77059		WORK ORDER NO: -		DATE: 09/26/07		DATE: 10/02/07		SCALE: FULL		DATE: 09/26/07		REV 1			
RELEASED FABRICATION OF THIS ORDER HAS BEGUN		CERTIFIED DRAWING FOR:		MODEL 168EF-122-28		QUANTITY: 1		DWG. NO. 77059-CRT																	
REV	1	REBATE AND RESUBMIT FOR APPROVAL		BY	J.J.	CK	M.B.	APP		DATE	10/17/07	DR	J.J.	DATE	09/26/07	CK	M.B.	DATE	10/02/07	SCALE	FULL	DATE	09/26/07	REV	1

