

Z-3011
VRU COMPRESSOR PACKAGE

P-3011(M)
LT PUMP MOTOR
HP: 1
RPM: 1800
460VAC/3Ø/60HZ
TEFC: 143T
CLS1, DIV. 2

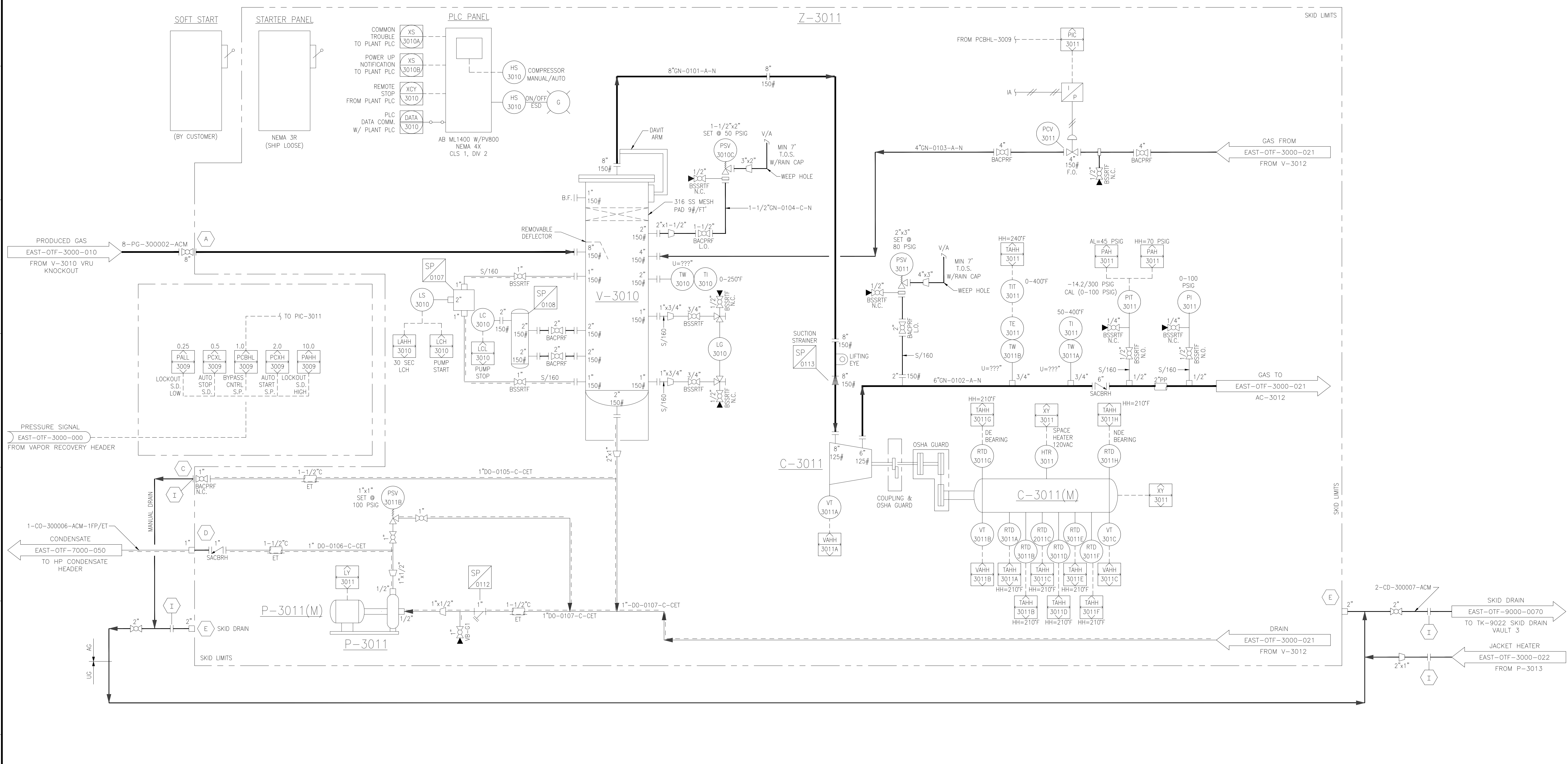
P-3011
LIQUID TRANSFER PUMP
TYPE: POSITIVE DISPLACEMENT
MAKE/MODEL: TUTHILL/2LE
FLOW: 6 GPM @ 50 PSIG
POWER: 1HP @ 1800 RPM
ASME CODE

V-3010
SUCTION SCRUBBER
SIZE: 24" O.D. x 60" S/S
DESIGN P/T: 150 PSIG @ -20/300°F
MATERIAL: CS
8" INLET/OUTLET
ASME CODE
SECTION 8 DIV 1

C-3011
VRU COMPRESSOR
TYPE: ROTARY VANE
MAKE/MODEL: RO-FLOW/12L
CAPACITY: 1.4 MMSCFD
MAX BHP: 113.1 BHP
SUCTION PRESSURE: 0.5 PSIG
DISCHARGE PRESSURE: 30 PSIG
DRIVER: ELECTRIC, 460VAC/3Ø/60HZ
POWER: 150 HP @ 1800 RPM
MAMP: 80 PSIG

C-3011(M)
COMPRESSOR MOTOR
HP: 150
RPM: 1800
460VAC/3Ø/60HZ
TEFC CLS 1, DIV. 2
IEEE 841
NEMA ????T

DRIVE CONDITIONS
MIN. COMP. SPEED - 380
MAX. COMP. SPEED - 920
REQ. COMP. SPEED - 917
MOTOR NOT EXCEED 60 HZ



NOTES:
1. RELIEF VALVE CONNECTION.
2. COMPRESSOR BLOWDOWN
3. FUTURE VRU COMPRESSOR CONNECTION.
4. SEE EAST-OTF-3000-023.

DESIGN CONDITIONS:
P1 = 0.5-2.0 PSIG
P2 = 30 PSIG
T1 = 120°F
T2 = 120°F
TA = 100°F
SG = 1.83
N = 1.11
EL = 2600 FASL
Q = 1.04-1.28 MMSCFD

| REV | DESCRIPTION |
|----------------------------|-------------|
| AS-BUILT BY LDIS | |
| RE-ISSUED FOR CONSTRUCTION | |
| RE-ISSUED FOR CONSTRUCTION | |
| ISSUED FOR CONSTRUCTION | |

| BY | DATE | CHK BY | CHK DATE | APR BY | APR DATE |
|-----|----------|--------|----------|--------|----------|
| MAO | 04/25/19 | TBM | 04/25/19 | TBM | 04/25/19 |
| JMD | 02/08/19 | DMA | 02/08/19 | GAD | 02/08/19 |
| JMD | 09/07/18 | DMA | 09/07/18 | GAD | 09/07/18 |
| JMD | 07/20/18 | DMA | 07/20/18 | GAD | 07/20/18 |

| APPROVALS | |
|-----------------|----------|
| SIGNATURE | DATE |
| BMD | 02/12/18 |
| CHECKED | |
| APPROVED | |
| CLIENT APPROVAL | |
| SIGNATURE | DATE |
| OPERATIONS | |
| ENGINEERING | |
| PROJ. MGR. | |

PDC ENERGY

PIPING & INSTRUMENTATION DIAGRAM
BOREAS OTF
REEVES COUNTY, TEXAS
VRU COMPRESSOR SUCTION

SCALE: NO. SCALE
DRAWING NO. EAST-OTF-PID-3000-020