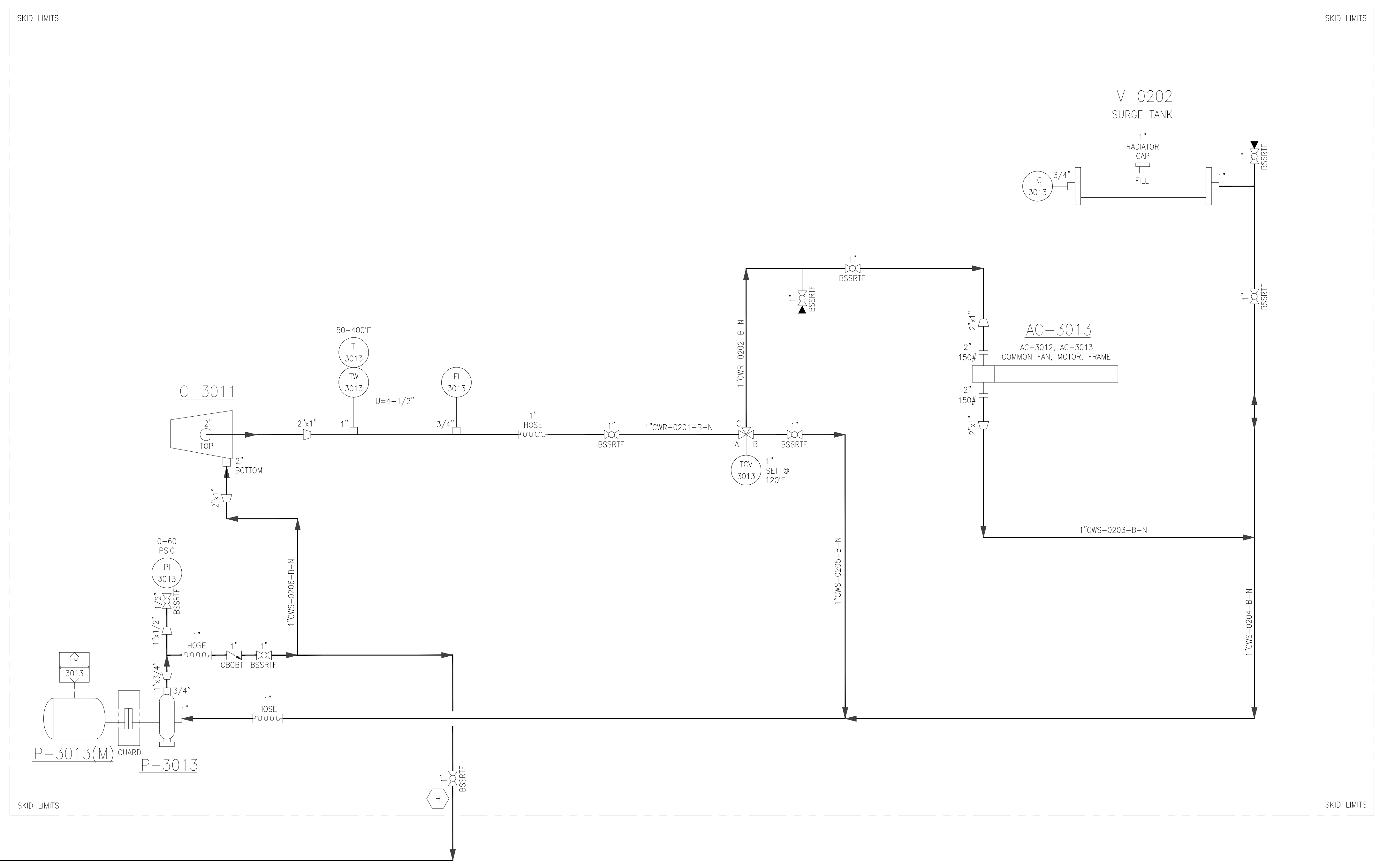


**P-3013(M)**  
 JW PUMP MOTOR  
 H.P.: 1  
 RPM: 3600  
 460VAC/3ø/60HZ  
 TEFC CLS 1, DIV. 2

**P-3013**  
 JACKET WATER PUMP  
 MFG: MP  
 MODEL: 30

**AC-3013**  
 JACKET WATER COOLER  
 MFG: FIN-X  
 FLOW: 11.4 GPM  
 DUTY: 85320 BUT/HR  
 HEADERS: ASTM A500B  
 TUBES: SA214  
 DESIGN PRESSURE: 100 PSI @ 300°F  
 MODEL: VT 48-7  
 TEMP IN/OUT: 137°F/120°F  
 INLET/OUTLET: 2" 150# RF

**V-0202**  
 SURGE TANK  
 MFG: HY-BON  
 8" O.D. x 45" E/E  
 50/50 WATER/GLYCOL



FILE PATH: C:\USERS\MOVER\DESKTOP\PID-3000-022.DWG BY:MOVER DATE:Apr 25, 2019 9:30am

NOTES:  
 1. SEE EAST-OTF-3000-023.

DESIGN CONDITIONS:  
 P1 = 0.5-2.0 PSIG  
 P2 = 30 PSIG  
 T1 = 120°F  
 T2 = 120°F  
 TA = 100°F  
 SC = 1.83  
 N = 1.11  
 EL = 2600 FASL  
 Q = 1.04-1.28 MMSCFD

REV	DESCRIPTION
AS-BUILT BY LDIS	

MAO	DATE	CHK BY	CHK DATE	APR BY	APR DATE
MAO	04/25/19	TBM	04/25/19	TBM	04/25/19

APPROVALS	
SIGNATURE	DATE
CHECKED	
APPROVED	
CLIENT APPROVAL	
SIGNATURE	DATE
OPERATIONS	
ENGINEERING	
PROJ. MGR.	

**PDC ENERGY**

PIPING & INSTRUMENTATION DIAGRAM  
 NEAST BOREAS OTF  
 REEVES COUNTY, TEXAS  
 VRU JACKET WATER

SCALE: NO. SCALE

DRAWING NO.  
 EAST-OTF-PID-3000-022

A B C D E F G H I J K