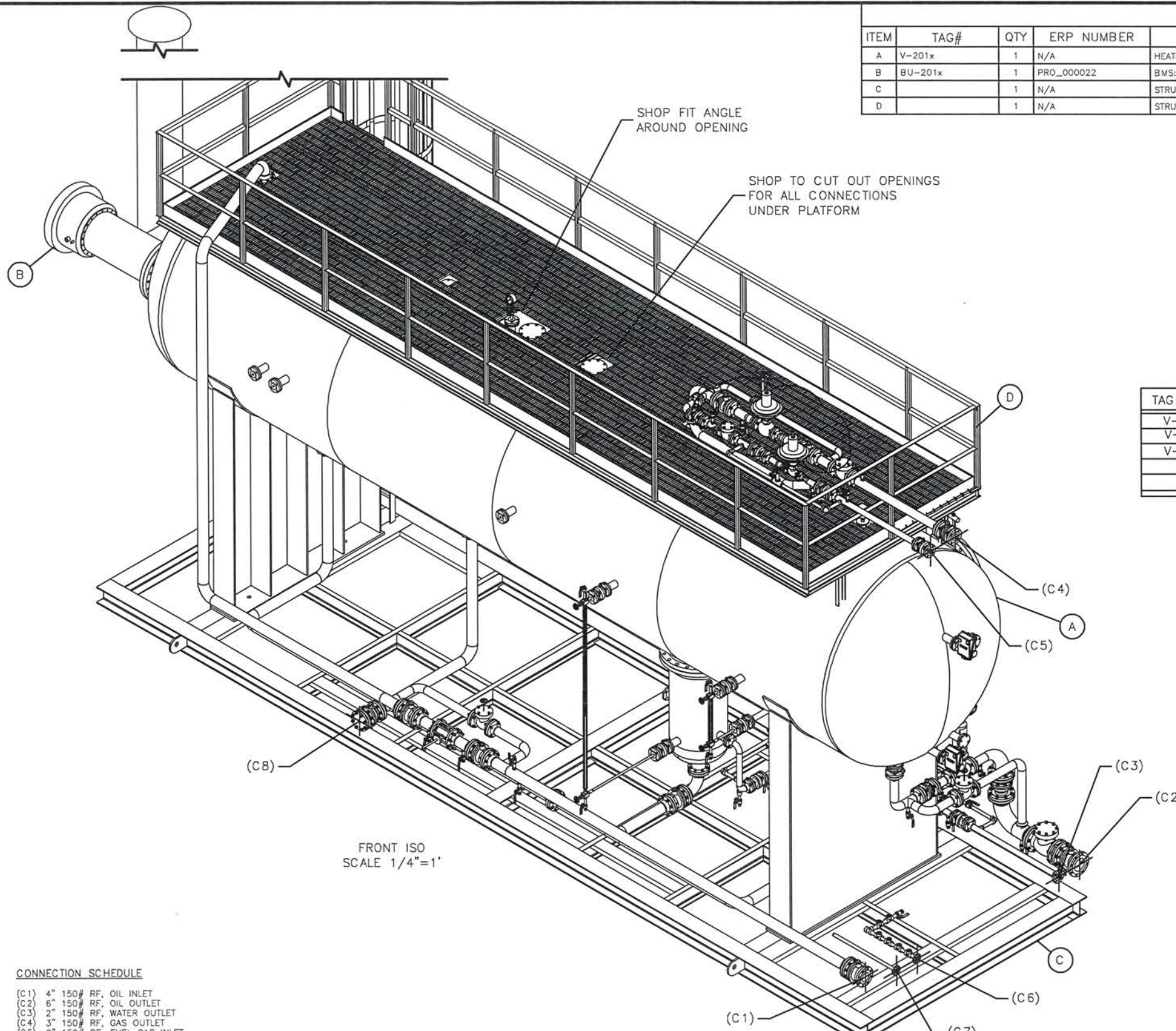


LEGEND

ITEM	TAG#	QTY	ERP NUMBER	DESCRIPTION	VENDOR	STOCK NUMBER
A	V-201x	1	N/A	HEATER TREATER: 96" OD x 32'-0" S/S 125 PSIG	ASME	96-32-HHS-125
B	BU-201x	1	PRO_000022	BMS: PF2100 w/KIT & VLVS, SEE OVERVIEW		
C		1	N/A	STRUCTURAL SKID STEEL: 8'-0" W x 24'-0" L w/ W8x24 MEMBERS	PS	PDC-VES-STL-1
D		1	N/A	STRUCTURAL PLATFORM STEEL: 5'-6" W x 20'-0" L w/ W6x15 MEMBERS	PS	PDC-VES-STL-2-PLATFORM



3

TAG SERIES	SWO #	LOG	REV
V-2015	SWO#1	574xx004-0001 (QTY 1)	REV 0
V-2014	SWO#2	574xx004-0002 (QTY 1)	REV 0
V-2013	SWO#3	574xx004-0003 (QTY 1)	REV 0
	SWO#4		REV
	SWO#5		REV

REVISED	
PREPARED BY:	RK
DATE:	1/23/2019
REVISION #	3
APPROVED BY:	JP
SWO #	SEE LOG

RED ENGINEERING SERVICES, LLC

PROJECT NO. CO 840 40 010 P.O. NO. DE20180571 TAG NO. V-2013 V-2014 V-2015

SIGNATURE: *JBB* / 1/30 (Resubmitted)

Task No. 1103

NOTICE: RED IS NOT RESPONSIBLE FOR ACCURACY OF SHOP DIMENSIONS

CONNECTION SCHEDULE

(C1)	4" 150# RF, OIL INLET
(C2)	6" 150# RF, OIL OUTLET
(C3)	2" 150# RF, WATER OUTLET
(C4)	3" 150# RF, GAS OUTLET
(C5)	2" 150# RF, FUEL GAS INLET
(C6)	1" 150# RF, I.A. INLET
(C7)	1" 150# RF, FUEL GAS INLET
(C8)	4" 150# RF, DRAIN OUTLET
(C9)	
(C10)	

- GENERAL NOTES
- TOTAL PACKAGE WEIGHT APPROX. ~ 65,000 LBS.
 - INTERIOR BUILDING COLOR: N/A
 - EXTERIOR SKID AND BUILDING COLOR: CARLSBAD CANYON TAN
 - INSULATION TO BE: N/A

REVISION HISTORY

REV	DATE	DESIGN	DESCRIPTION	CHECK	APPROV
3	1/23/2019	RK	UPDATED TAGS & LADDER/ADDED TAG SERIES	CLC	JP
2	1/4/2019	RK	UPDATED LBS./COLOR/COG/SPLS	CLC	JP
1	12/27/2018	DS	ADDED C.O.G.	CLC	JP
0	10/8/2018	RK	FOR CONSTRUCTION	CLC	JW
0	10/3/2018	RK	UPDATED PER CUSTOMER MARKUPS	CLC	JW
C	9/25/2018	RK	UPDATED FOR FINAL APPROVAL	CLC	JW

NOTICE: This drawing has not been published but rather has been prepared for PDC ENERGY by Power Service solely in respect of the construction, operation, and maintenance of the facility named in the title block and shall not be used for any other purpose or furnished to any other party, without the express written consent of Power Service.

REFERENCE DRAWINGS

96-32-HHS-125	VESSEL DETAIL
PDC-VES-PID-1	PROCESS DIAGRAM
DWG NO.	TITLE

PS
POWER SERVICE
A DISTRIBUTION NOW COMPANY
CASPER, WYOMING USA
(307)472-7722

THIS DRAWING IS THE PROPERTY OF POWER SERVICE, A DISTRIBUTION NOW COMPANY, CASPER, WYOMING, USA.

CUSTOMER: **PDC ENERGY**

GENERAL ARRANGEMENT
HEATER TREATER BOREAS
OTF, REEVES COUNTY, TEXAS
12'-0" OAWx42'-11 1/4" OALx21'-9 5/8" OAH

DWN BY	CHK'D BY	APP'D BY	ENGINEER	DATE DWN.	SCALE	SHEET	PROJECT NO.	DWG. NO.	REV.
RK	CLC	JP		9/13/2018	1/4"=1'	1 of 6	SEE LOG	PDC-VES-LO-1	3