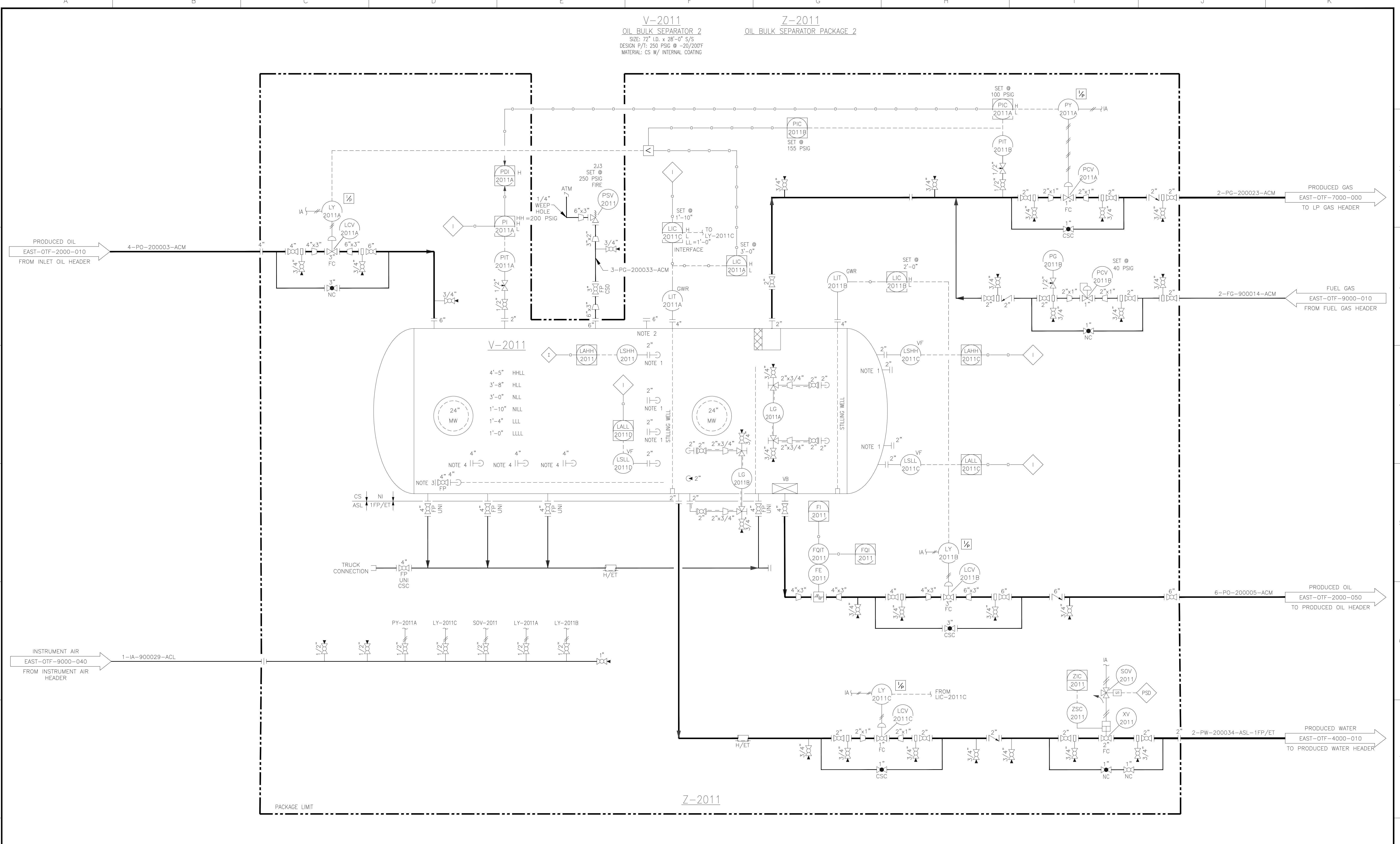


FILE PATH: C:\USERS\MOWER\DESKTOP\PCD BOREAS 4-25-19\EAST-OTF-PID-2000-030.DWG BY:MOWER DATE:Apr 25, 2019 9:17am



NOTES:  
 1. SPARE LEVEL SWITCH NOZZLE.  
 2. MAINTENANCE VENT CONNECTION.  
 3. SANDJET NOZZLE. (PER ASL PIPE SPEC)  
 4. ANODE CONNECTIONS.

REV	DESCRIPTION
AS-BUILT	BY LDIS
RE-ISSUED	FOR CONSTRUCTION
RE-ISSUED	FOR CONSTRUCTION
RE-ISSUED	FOR CONSTRUCTION
RE-ISSUED	FOR CONSTRUCTION
ISSUED	FOR CONSTRUCTION

REV	DESCRIPTION	BY	DATE	CHK BY	CHK DATE	APR BY	APR DATE
MAQ	04/25/19	TBM	04/25/19	TBM	04/25/19		
JMD	02/08/19	DMA	02/08/19	GAD	02/08/19		
JMD	11/21/18	DMA	11/21/18	GAD	11/21/18		
JMD	09/07/18	DMA	09/07/18	GAD	09/07/18		
JMD	07/20/18	DMA	07/20/18	GAD	07/20/18		

APPROVALS	
SIGNATURE	DATE
BMD	02/12/18
CHECKED	
APPROVED	
CLIENT APPROVAL	
SIGNATURE	DATE
OPERATIONS	
ENGINEERING	
PROJ. MGR.	

**PDC ENERGY**

PIPING & INSTRUMENTATION DIAGRAM  
 BOREAS OTF  
 REEVES COUNTY, TEXAS  
 OIL BULK SEPARATOR 2

SCALE: NO SCALE  
 DRAWING NO. EAST-OTF-PID-2000-030